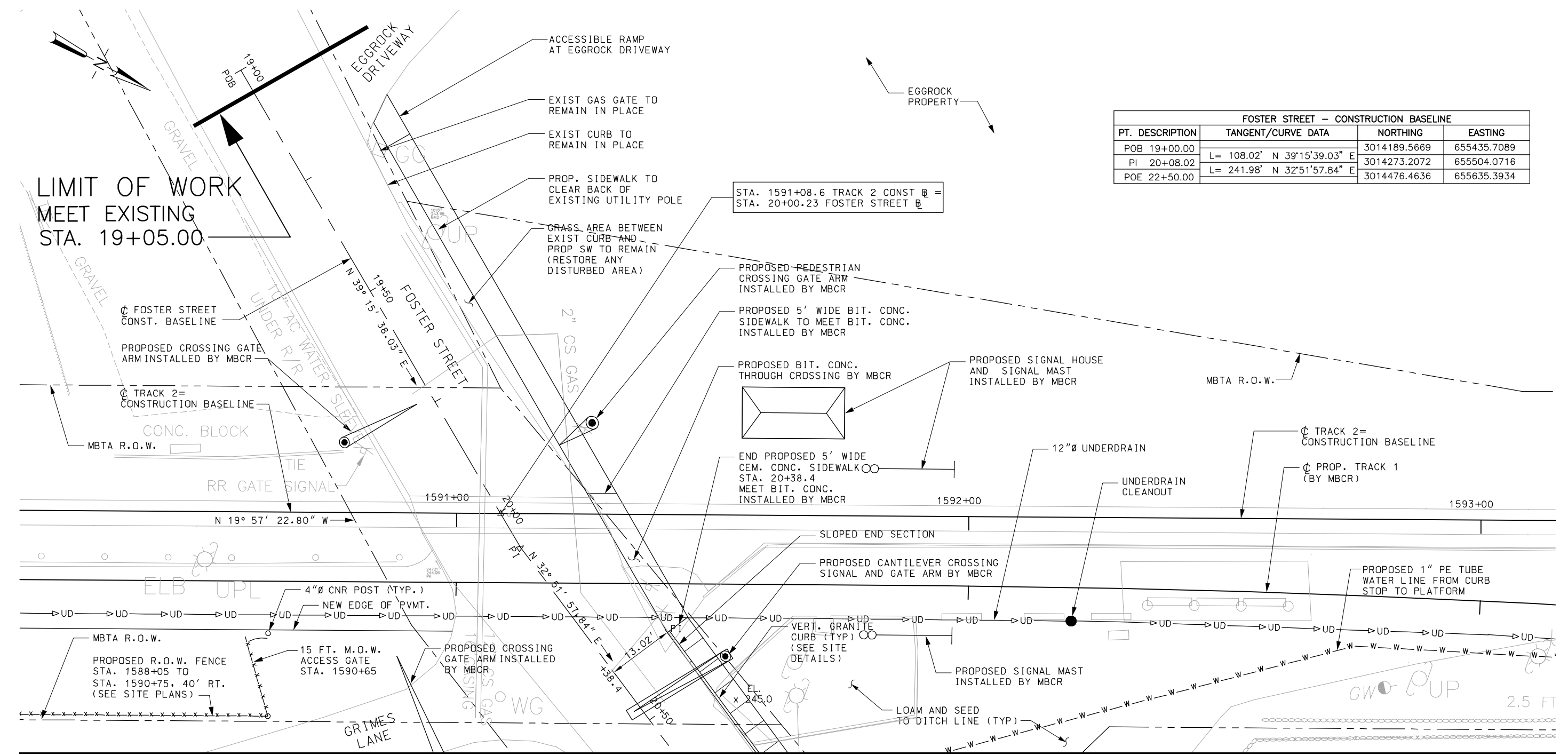


EAST TO BOSTON

WEST TO FITCHBURG
TOWN OF LITTLETON



FOSTER STREET - CONSTRUCTION BASELINE			
PT. DESCRIPTION	TANGENT/CURVE DATA	NORTHING	EASTING
POB 19+00.00		3014189.5669	655435.7089
PI 20+08.02	L= 108.02' N 39°15'39.03" E	3014273.2072	655504.0716
POE 22+50.00	L= 241.98' N 32°51'57.84" E	3014476.4636	655635.3934

MATCH LINE SEE SHEET C-18

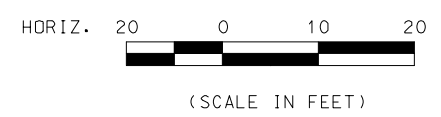
PLAN

NOTES:

1. FOR LIMITS OF CLEARING AND GRUBBING SEE DEMOLITION PLANS.
2. FOR FURTHER INFORMATION SEE SITE PLANS AND DRAINAGE & GRADING PLANS.
3. FOR SURVEY CONTROL AND TIE DOWN INFORMATION SEE 'SC' PLANS.

LEGEND:

- - - - - PROPOSED PROPERTY LINE
- - - - - RAILROAD R.O.W.



100% SUBMITTAL

FILE NAME: P:\MBTA\2008\22\37800\CAD\700CADD\702STATIONS\Littleton\Civil\100% design\C-17 thru 19 Detailed Site Plans.dwg
PLOT DATE: Dec. 07, 2010 - 3:52pm

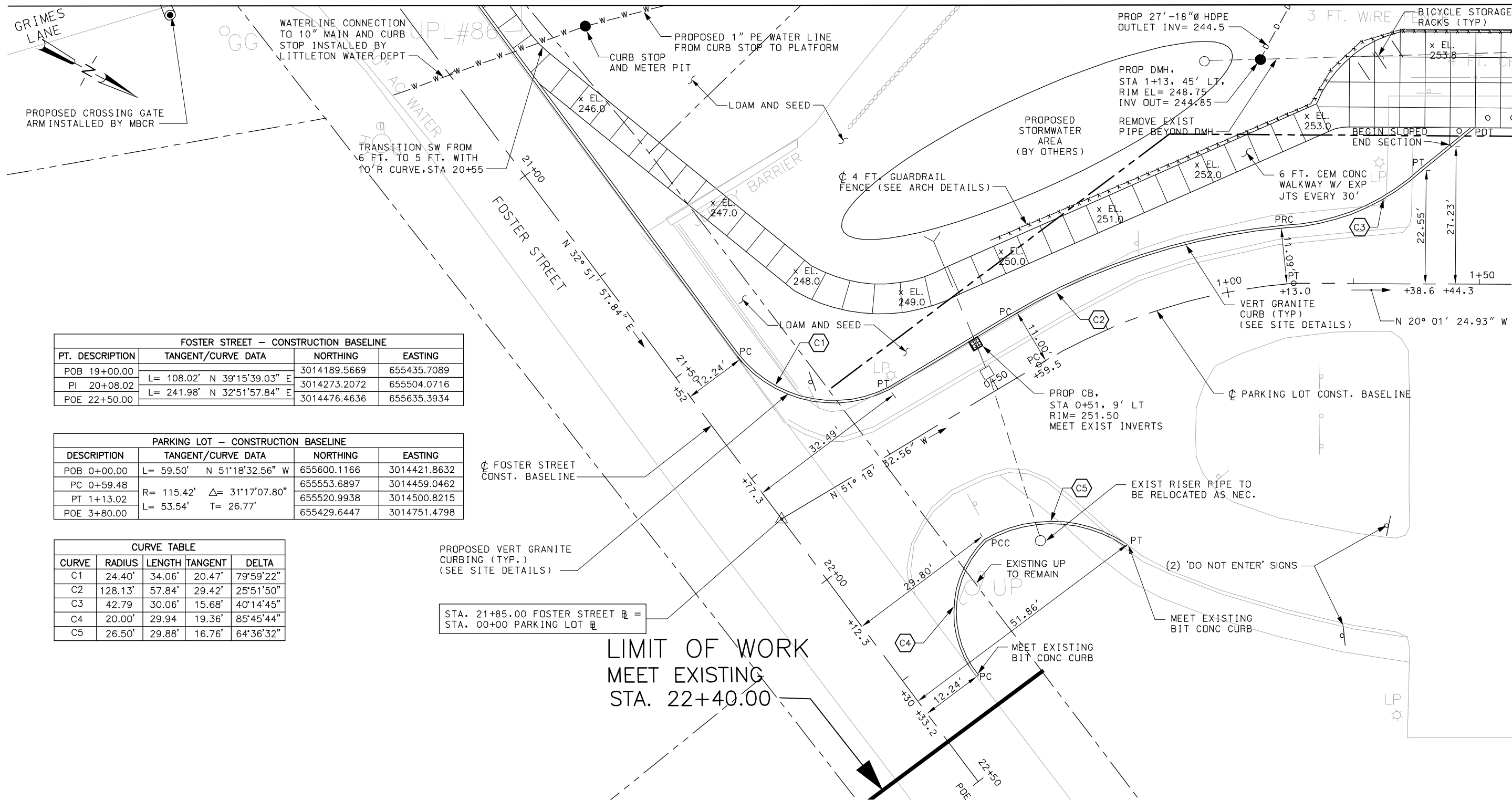
		MASSACHUSETTS BAY TRANSPORTATION AUTHORITY FITCHBURG COMMUTER RAIL LINE IMPROVEMENT PROJECT CONTRACT NO. D09CN01	
		LITTLETON STATION DETAILED SITE PLAN SHEET 1 OF 3	
		MASSACHUSETTS BAY TRANSPORTATION AUTHORITY APPROVED BY: _____ DIRECTOR OF OPERATIONS SUPPORT	
		PROJECT MANAGER HORIZ: AS SHOWN VERT: NONE DATE: 12/03/10	
343 CONGRESS STREET BOSTON, MA 02110 (617) 242-9222		DES. BY: JPB DR. BY: KMB CHK. BY: JM	
PLAN NO. 169388 SHEET C-17		DATE: 12/03/10	

EAST TO BOSTON

WEST TO FITCHBURG

MATCH LINE - SEE SHEET C-17

TOWN OF LITTLETON



FOSTER STREET - CONSTRUCTION BASELINE			
PT. DESCRIPTION	TANGENT/CURVE DATA	NORTHING	EASTING
POB 19+00.00		3014189.5669	655435.7089
PI 20+08.02	L= 108.02' N 39°15'39.03" E	3014273.2072	655504.0716
POE 22+50.00	L= 241.98' N 32°51'57.84" E	3014476.4636	655635.3934

PARKING LOT - CONSTRUCTION BASELINE			
DESCRIPTION	TANGENT/CURVE DATA	NORTHING	EASTING
POB 0+00.00	L= 59.50' N 51°18'32.56" W	655600.1166	3014421.8632
PC 0+59.48	R= 115.42' Δ= 31°17'07.80"	655553.6897	3014459.0462
PT 1+13.02	L= 53.54' T= 26.77'	655520.9938	3014500.8215
POE 3+80.00		655429.6447	3014751.4798

CURVE TABLE				
CURVE	RADIUS	LENGTH	TANGENT	DELTA
C1	24.40'	34.06'	20.47'	79°59'22"
C2	128.13'	57.84'	29.42'	25°51'50"
C3	42.79'	30.06'	15.68'	40°14'45"
C4	20.00'	29.94'	19.36'	85°45'44"
C5	26.50'	29.88'	16.76'	64°36'32"

PROPOSED VERT GRANITE CURBING (TYP.) (SEE SITE DETAILS)

STA. 21+85.00 FOSTER STREET = STA. 00+00 PARKING LOT

LIMIT OF WORK MEET EXISTING STA. 22+40.00

PLAN

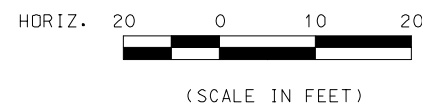
NOTES:

- FOR LIMITS OF CLEARING AND GRUBBING SEE DEMOLITION PLANS.
- FOR FURTHER INFORMATION SEE SITE PLANS AND DRAINAGE & GRADING PLANS.
- FOR SURVEY CONTROL AND TIE DOWN INFORMATION SEE 'SC' PLANS.

100% SUBMITTAL

LEGEND:

- PROPOSED PROPERTY LINE
- RAILROAD R.O.W.



		MASSACHUSETTS BAY TRANSPORTATION AUTHORITY FITCHBURG COMMUTER RAIL LINE IMPROVEMENT PROJECT CONTRACT NO. D09CN01	
		LITTLETON STATION DETAILED SITE PLAN SHEET 2 OF 3	
		MASSACHUSETTS BAY TRANSPORTATION AUTHORITY APPROVED BY: _____ DIRECTOR OF OPERATIONS SUPPORT	
PROJECT MANAGER HORIZ: AS SHOWN VERT: NONE DATE: 12/03/10		DES. BY: JPB DR. BY: KMB CHK. BY: JM PLAN NO. 169389 SHEET C-18	
		343 CONGRESS STREET BOSTON, MA 02110 (617) 242-9222	

FILE NAME: P:\MBTA\2008\E2\37800\CAD\700CADD\702STATIONS\Littleton\Civil\100% design\C-17 thru 19 Detailed Site Plans.dwg
 PLOT DATE: Dec. 07, 2010 - 3:52pm

MATCH LINE - SEE SHEET C-19

