



# **Fitchburg**

## **Commuter Rail**

Line Improvement Project

***Presented to:***  
Fitchburg Line Working Group

***Presented by:***  
The HNTB Team

**July 8, 2011**





# Project Definition/Goals

## One Corridor/Multiple Projects:

\$159M Small Starts/Rt 62 Bridge

\$ 10M CPF 43 (ARRA)

\$ 42M Double Tracking (ARRA/EOHED)

\$ 55M Wachusett Extension (TIGER)

\$266M Investment

**Improve  
Performance**



Increase Reliability/Access  
Decrease Travel Time  
Extend Service



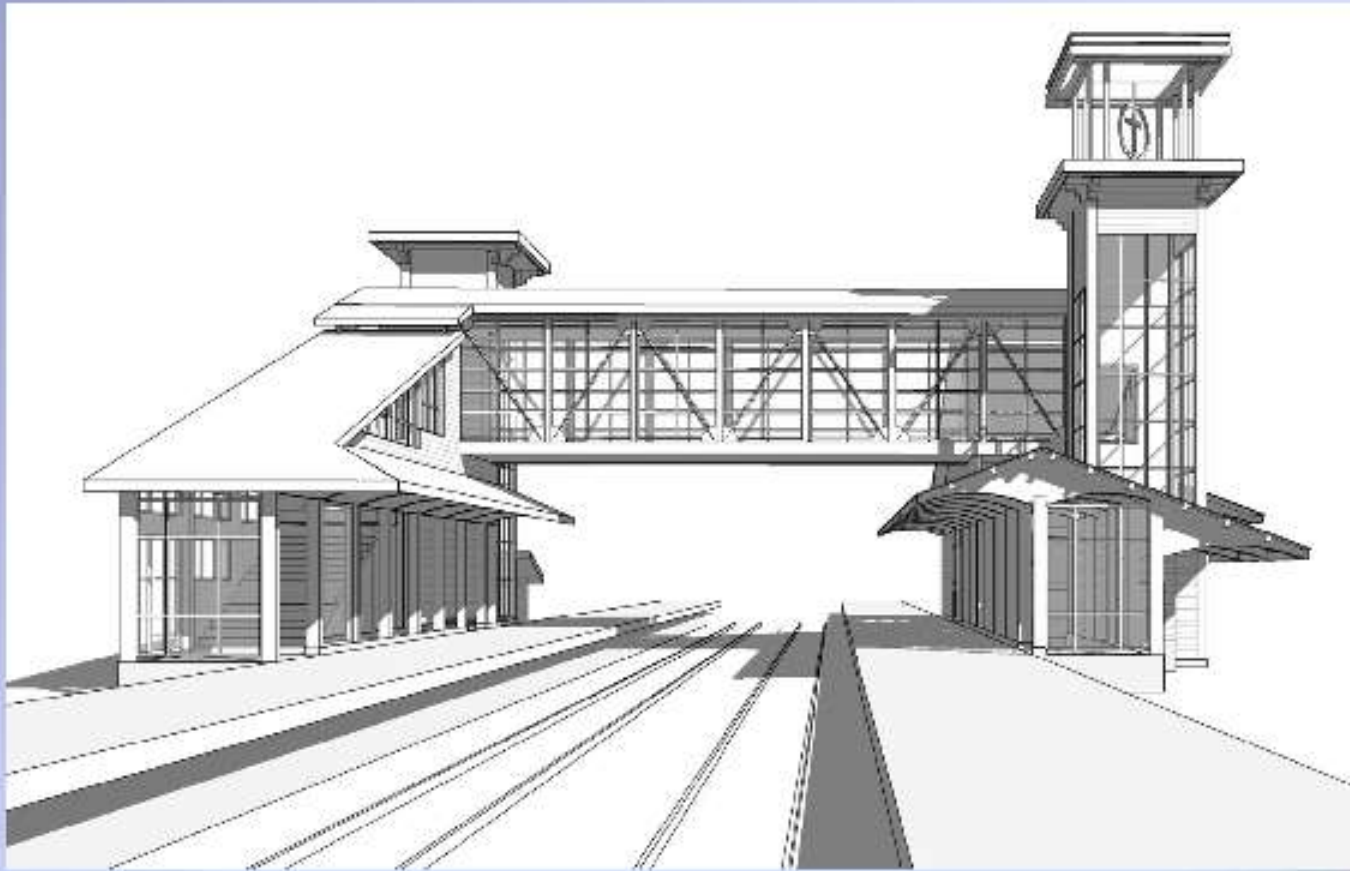


# Small Starts Update

- Funding Application submitted to FTA
  - PCGA anticipated September, 2011
- Permitting
  - Federal and state complete
  - Local WPA in progress
- Major Construction Packages
  - Track & Signal
  - Bridge & Communications
  - South Acton Station

Computer Model - Progress

# View to West



April 7, 2011

Computer Model - Progress

# North Head House



April 7, 2011



# CPF 43

- Installation complete Fall 2011





# Double Track

- Design & Permitting Complete
- Force Account Construction – MBCR
  - Track under construction
  - Signal package – ready to go
    - Long lead materials ordered
- Littleton Station Construction
  - Bid Advertise Aug 2011 – complete Spring 2013
  - Parking funded at \$2M (EOHED)





# Station Architecture

In Context View from Foster St.

The three dimensional model has been inserted into a photo of the existing site. The image shows the proposed ramp/bridge in context. The existing parking lot (Nordbloom) is to the right, behind the trees.



Lozano, Baskin, and Associates, Inc.



# Station Architecture

In Context View from East End of Platform toward Foster St.

This image shows the east end of the platform and the ramp/bridge system in relation to the embankment between the right of way and the existing parking lot.



Lozano, Baskin, and Associates, Inc.



# Station Architecture

## In Context View from Parking Lot

The model has been inserted into a photo taken from the northwest corner of the existing parking lot. The north end of the bridge is designed to allow future connection with a potential parking structure or building.



Lozano, Baskin, and Associates, Inc.



## Littleton Station – Parking Expansion



- Upper Parking Lot – Construction Complete
- Property Acquired By MBTA



# Wachusett Extension

## Design

- Funding Obligated to MBTA
- Updated Permitting in progress
- Layover & Station design – 15%
- Track & Signal work – 15%

## Construction

- Freight Siding construction – Fall 2011
- Substantial Project Complete - End 2013









# **Fitchburg**

## **Commuter Rail**

Line Improvement Project

***Presented to:***  
Fitchburg Line Working Group

***Presented by:***  
The HNTB Team

**July 8, 2011**

