













Legend:

-  Conservation Commission
-  Select Board
-  Parks and Recreation
-  New England Forestry Foundation
-  Privately Owned



Legend:

-  Conservation Commission
-  Select Board
-  Parks and Recreation
-  New England Forestry Foundation
-  Privately Owned
-  Dock
-  Boats and Watercraft
-  PRCE Dock
-  Other unpermitted activities

* Many locations contain multiple boats/watercrafts or other unpermitted activities

Docks Only

9 docks

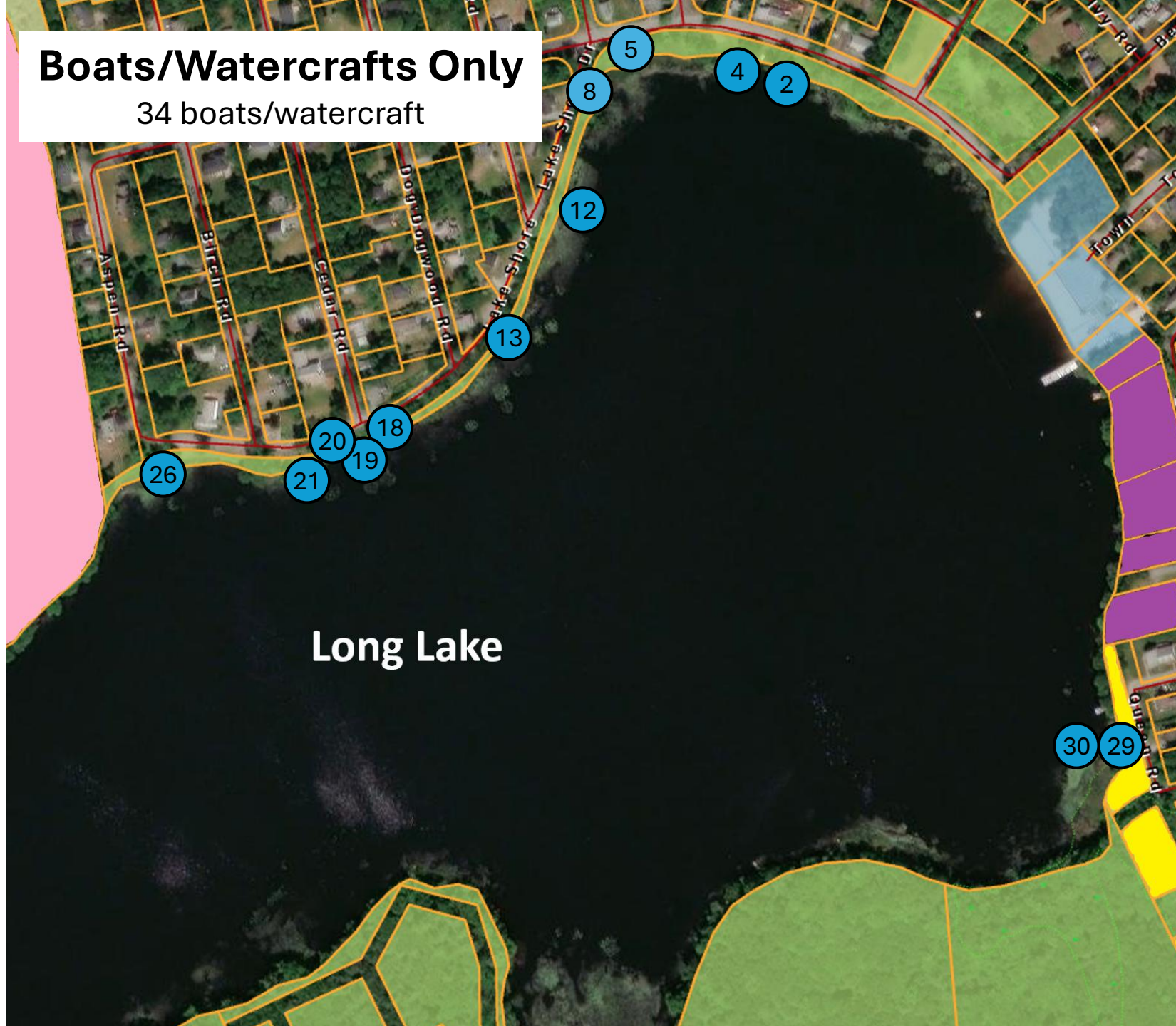
Long Lake

Legend:

- Conservation Commission
- Select Board
- Parks and Recreation
- New England Forestry Foundation
- Privately Owned
- Dock
- PRCE Dock

Boats/Watercrafts Only

34 boats/watercraft



Legend:

- Conservation Commission
- Select Board
- Parks and Recreation
- New England Forestry Foundation
- Privately Owned
- Boats and Watercraft

* Many locations contain multiple boats/watercrafts

Other Unpermitted Activities

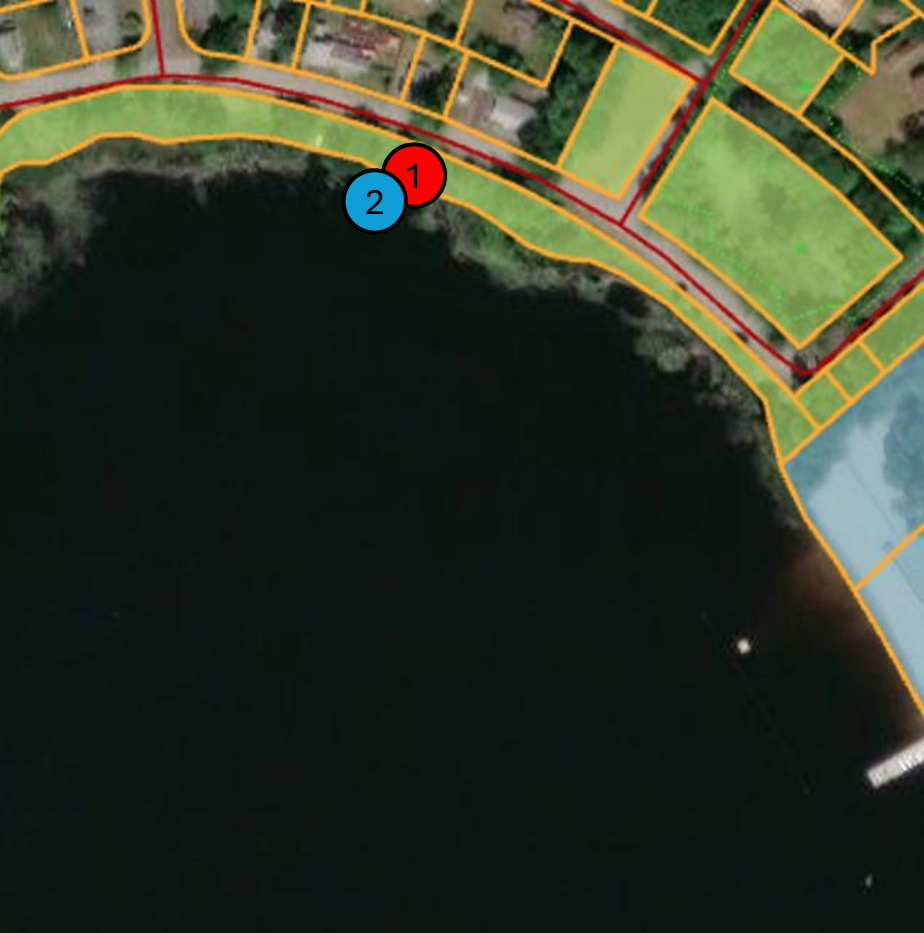
10 “other” violations



Legend:

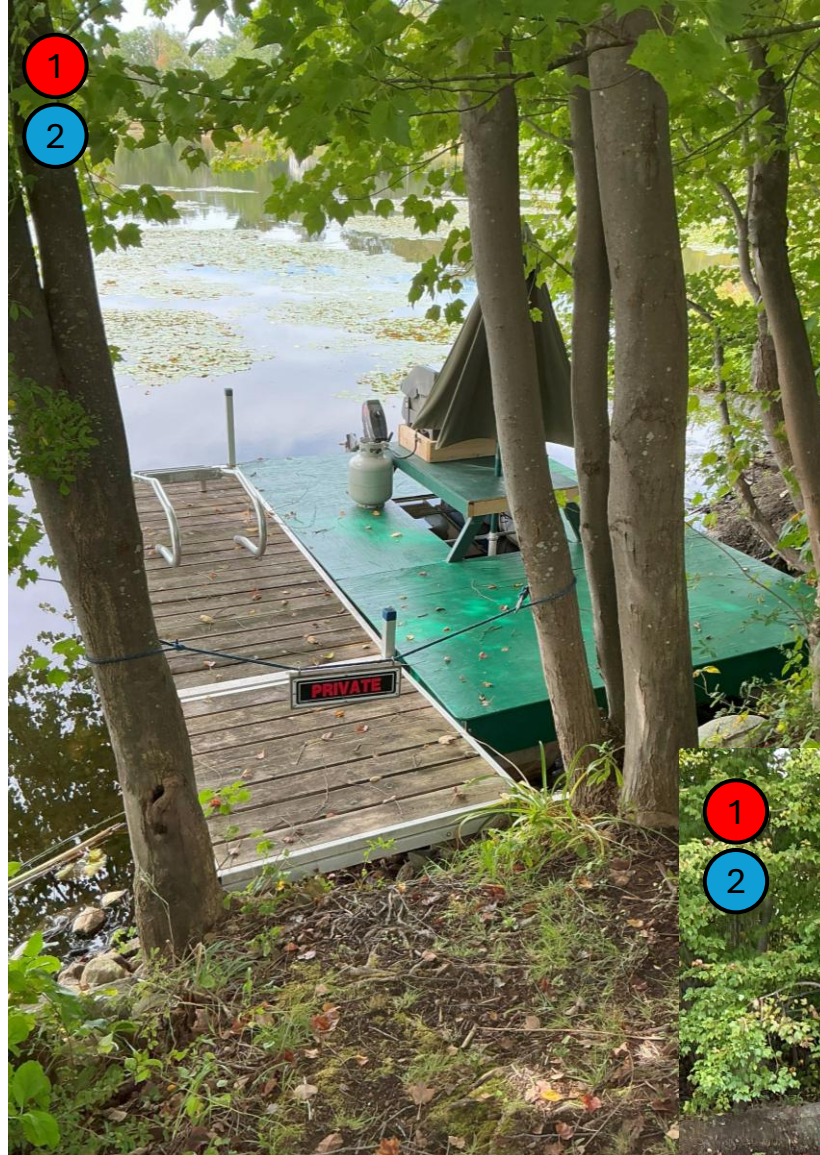
- Conservation Commission
- Select Board
- Parks and Recreation
- New England Forestry Foundation
- Privately Owned
- Other unpermitted activities

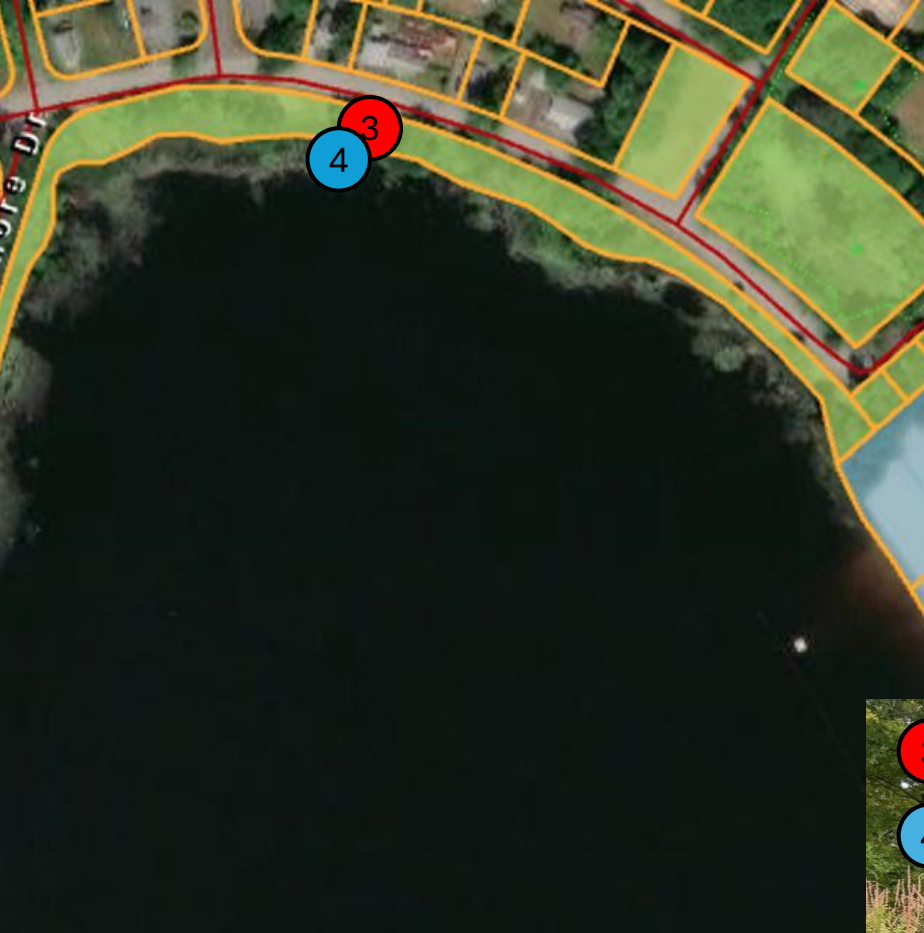
* Many locations contain multiple unpermitted activities



1 Dock – fair condition, unlicensed

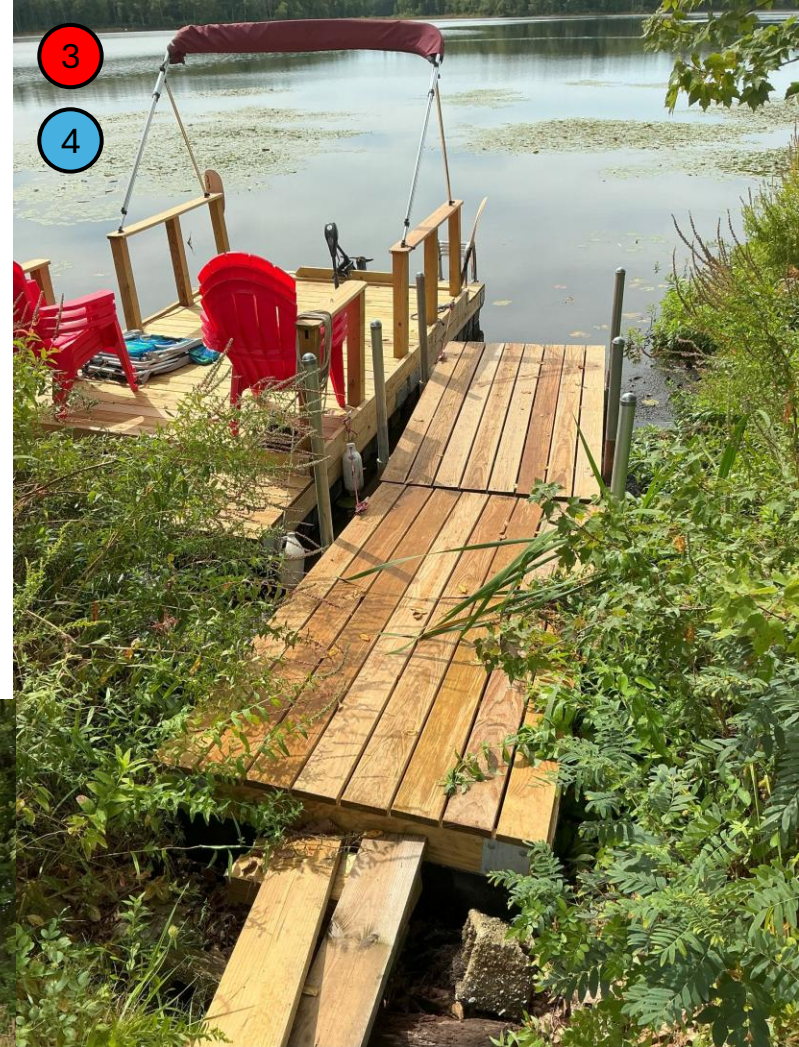
2 One Boat

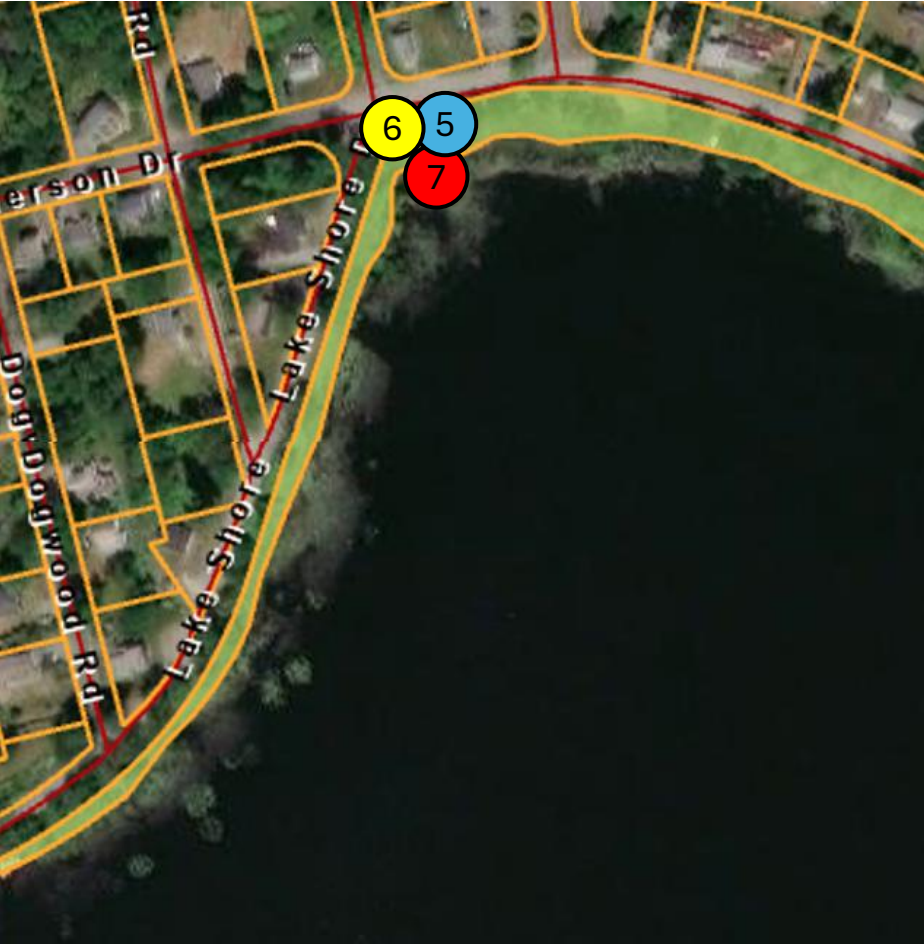




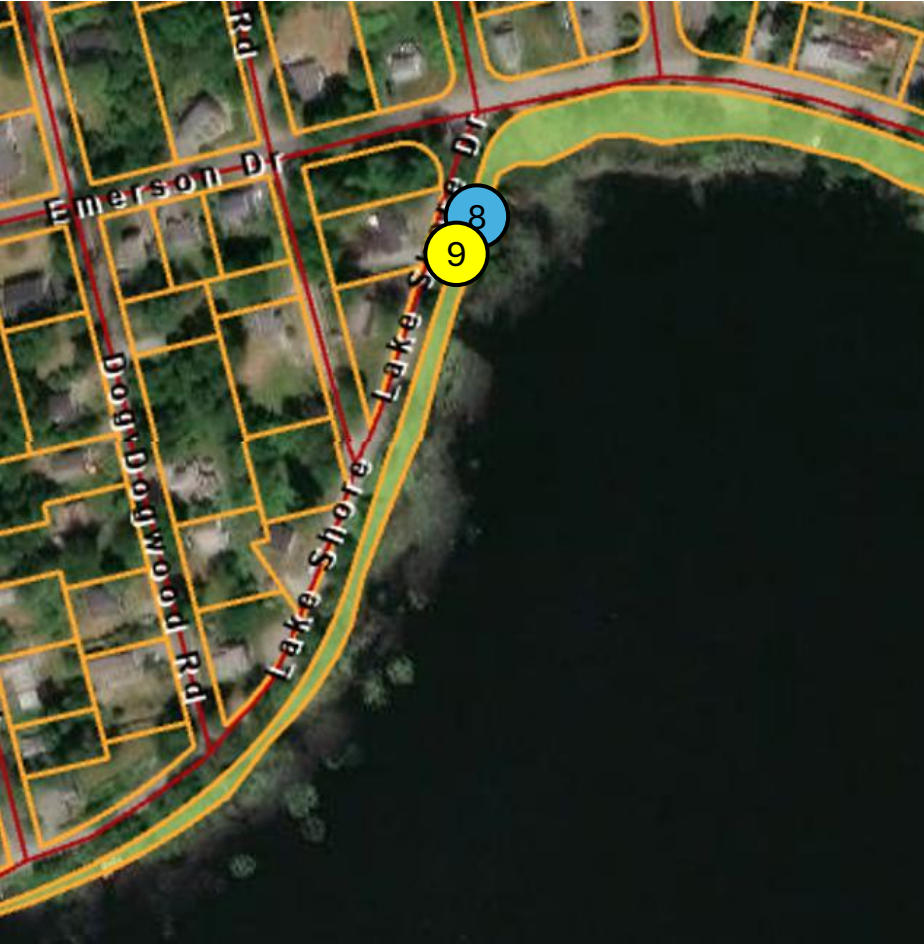
3 Dock – good condition, unlicensed

4 One Boat





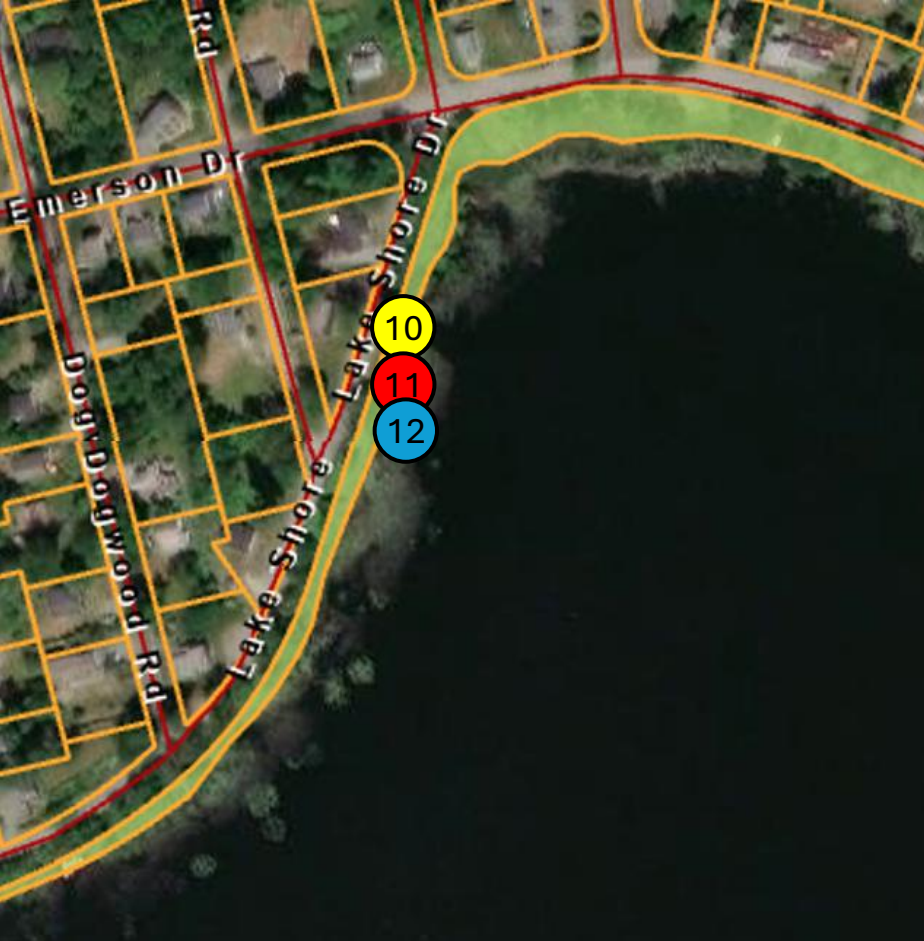
- 5 Four watercrafts (one unpictured behind fence/pallet)
- 6 Parking area
- 7 Dock - poor condition, unlicensed



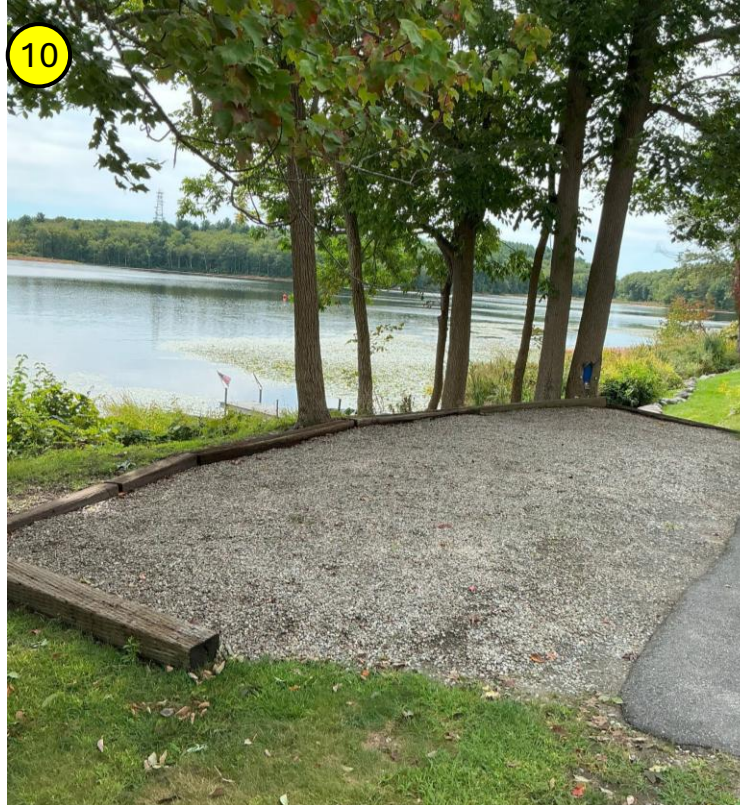
8 Three watercrafts
Four sawhorses

9 Chairs and table
Fish sculpture





- 10
 Parking Spot – crushed gravel/partial paved area
 Large mowed area
 Artificial beached area
- 11
 Dock – good condition, unlicensed
- 12
 One boat
 One watercraft

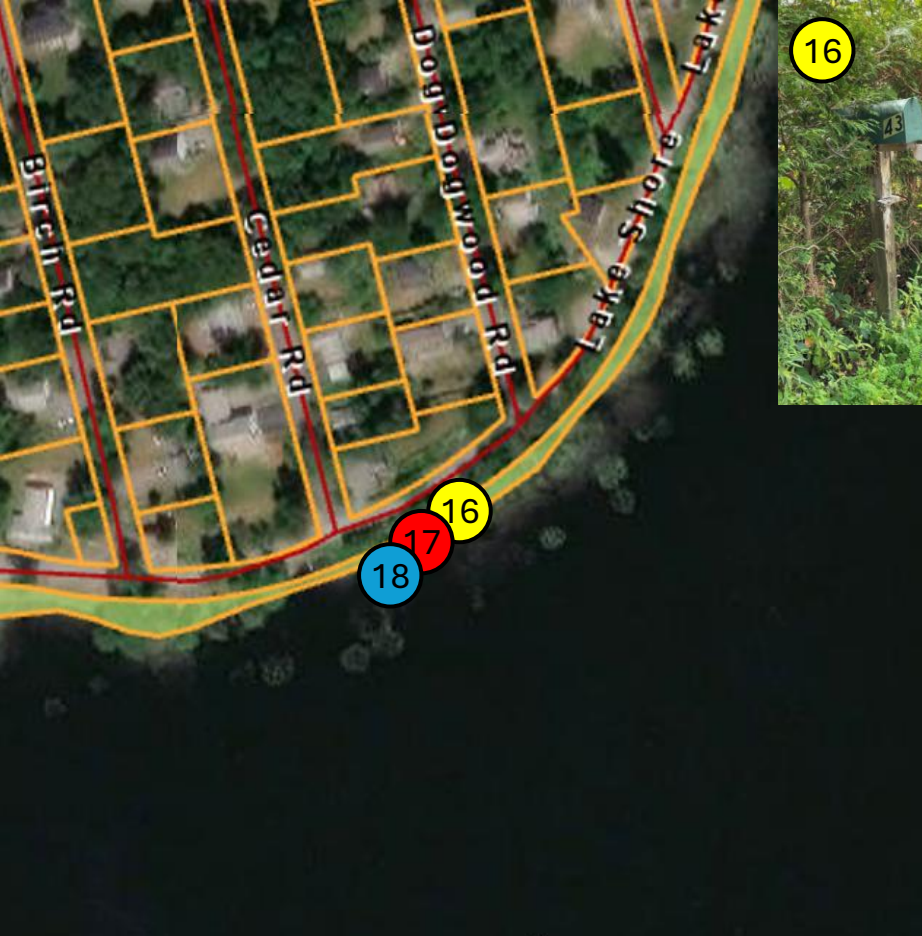




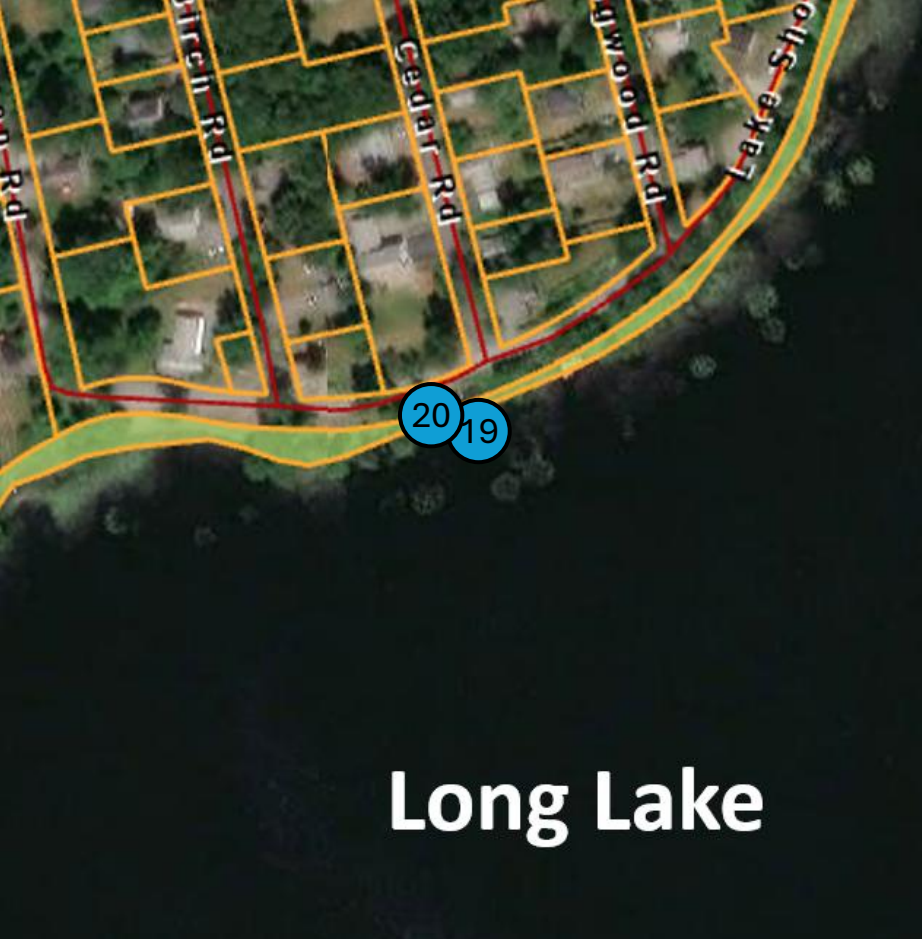
Long Lake

- 13 One Watercraft
- 14 Mowed sitting area with chairs
Cut vegetation along bank
- 15 Dock – poor condition, unlicensed





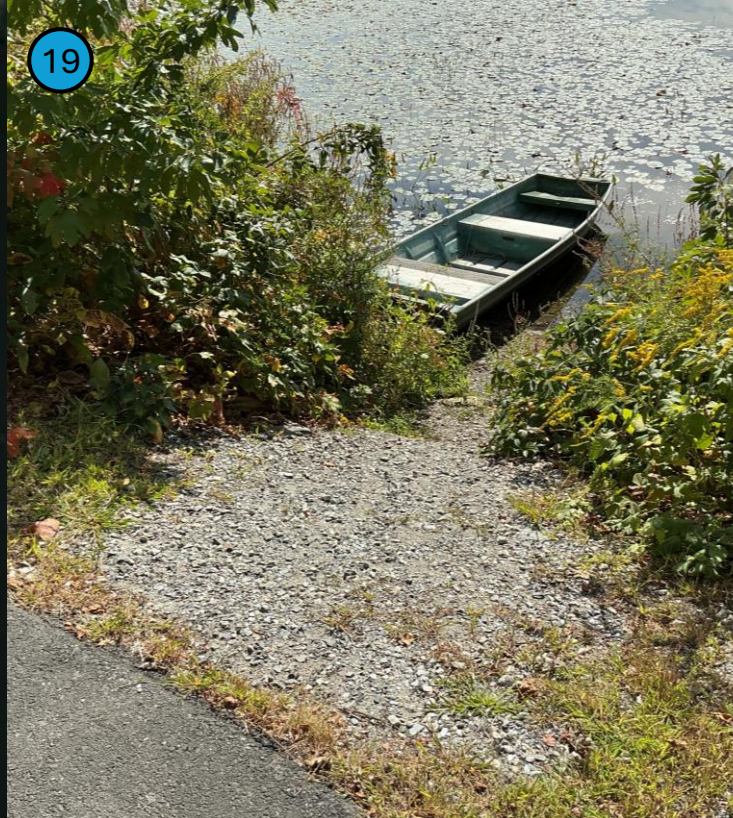
- 16 Mailbox
- Stone walkway
- Folding table
- Steps towards road
- Sitting area with chairs
- 17 Dock – good condition, unlicensed
- 18 Six watercrafts

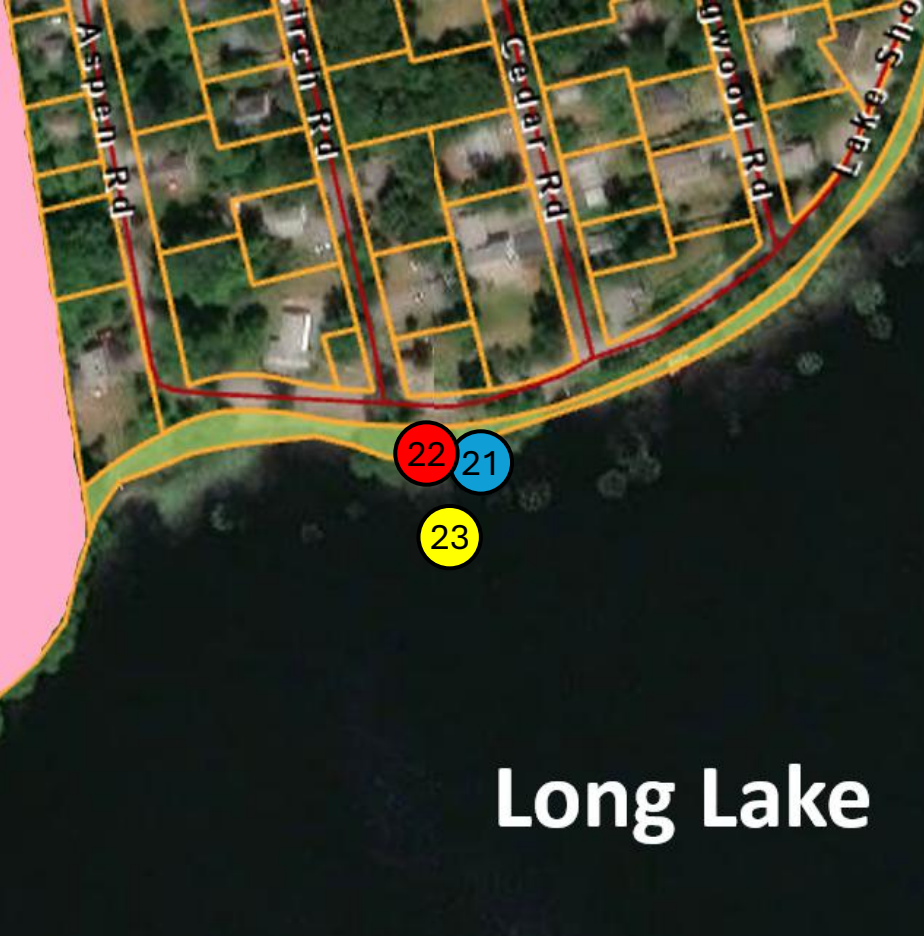


Long Lake

19 One Watercraft
Graveled access to beached area

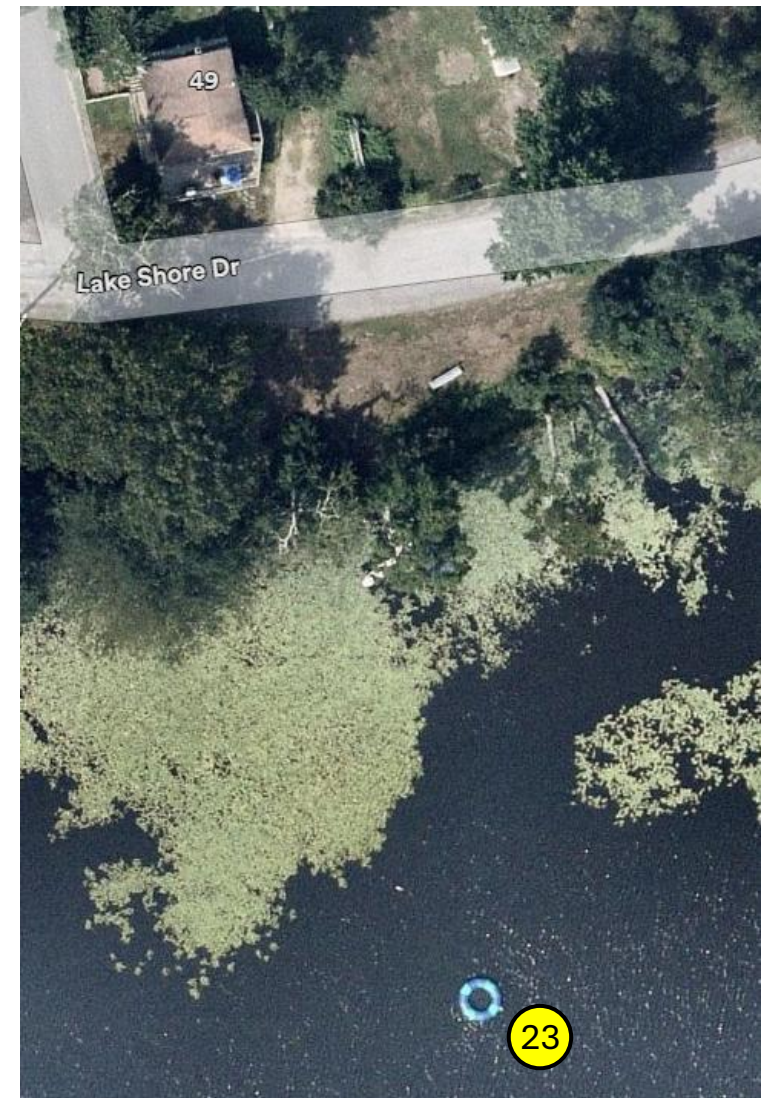
20 One Watercraft

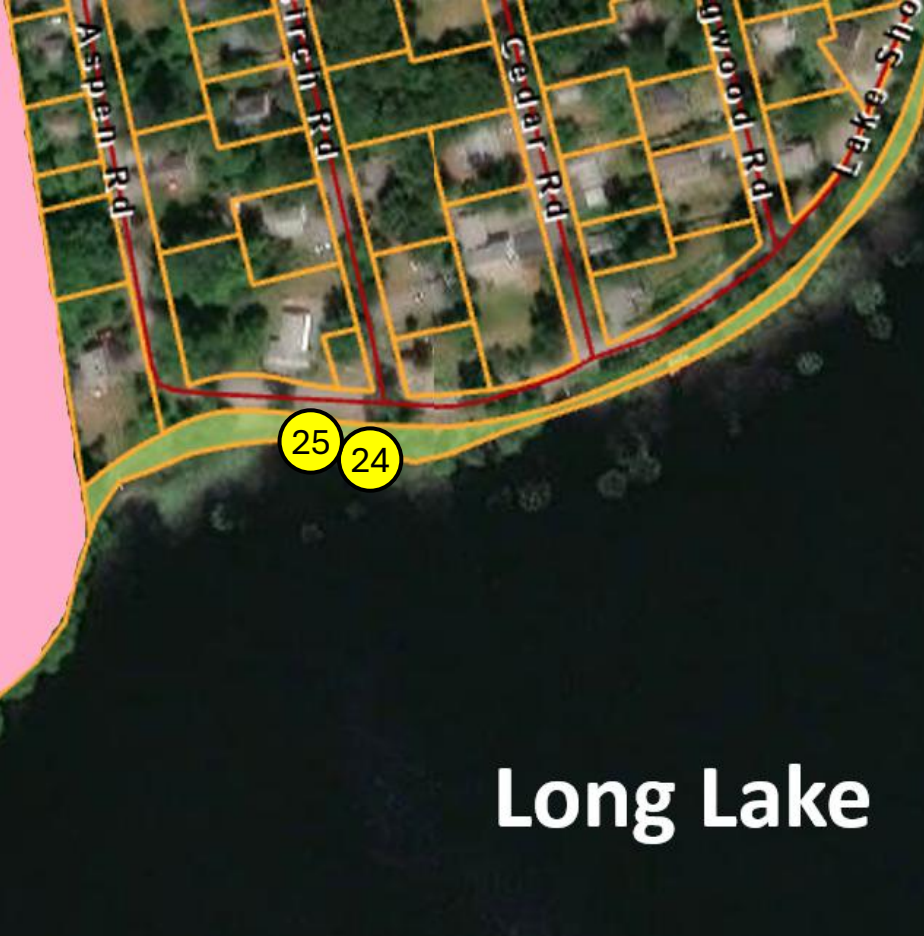




Long Lake

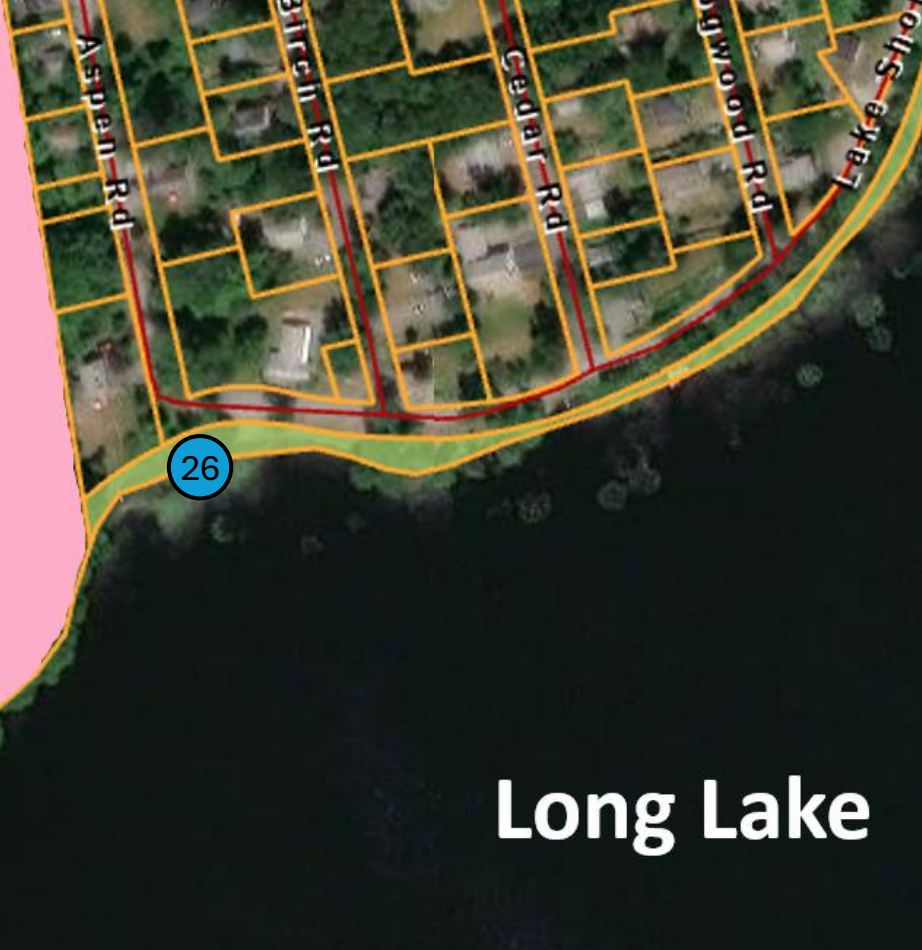
- 21 One Boat
- 22 Dock – poor condition, unlicensed
- 23 Play structure
Two buoys/moorings





24 "No Parking" Sign

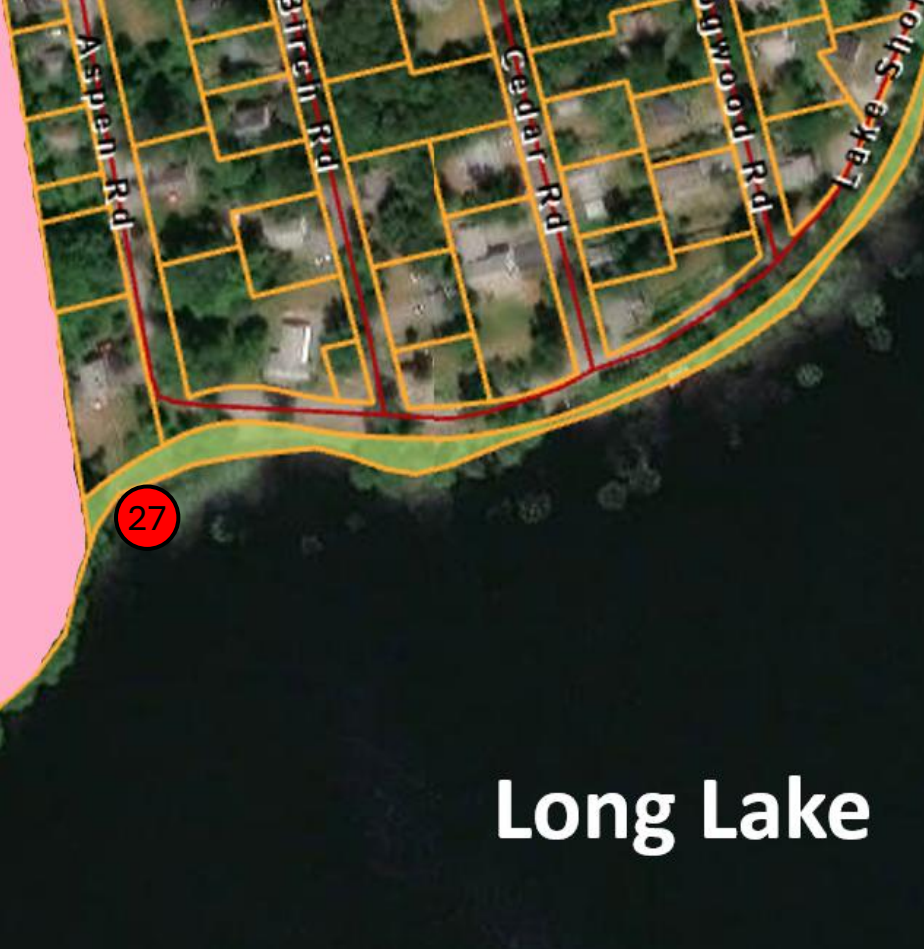
25 Two mailboxes (white in background of photo)
Mowed area



Long Lake



26 Seven watercrafts



27 Dock – poor/fair condition, unlicensed

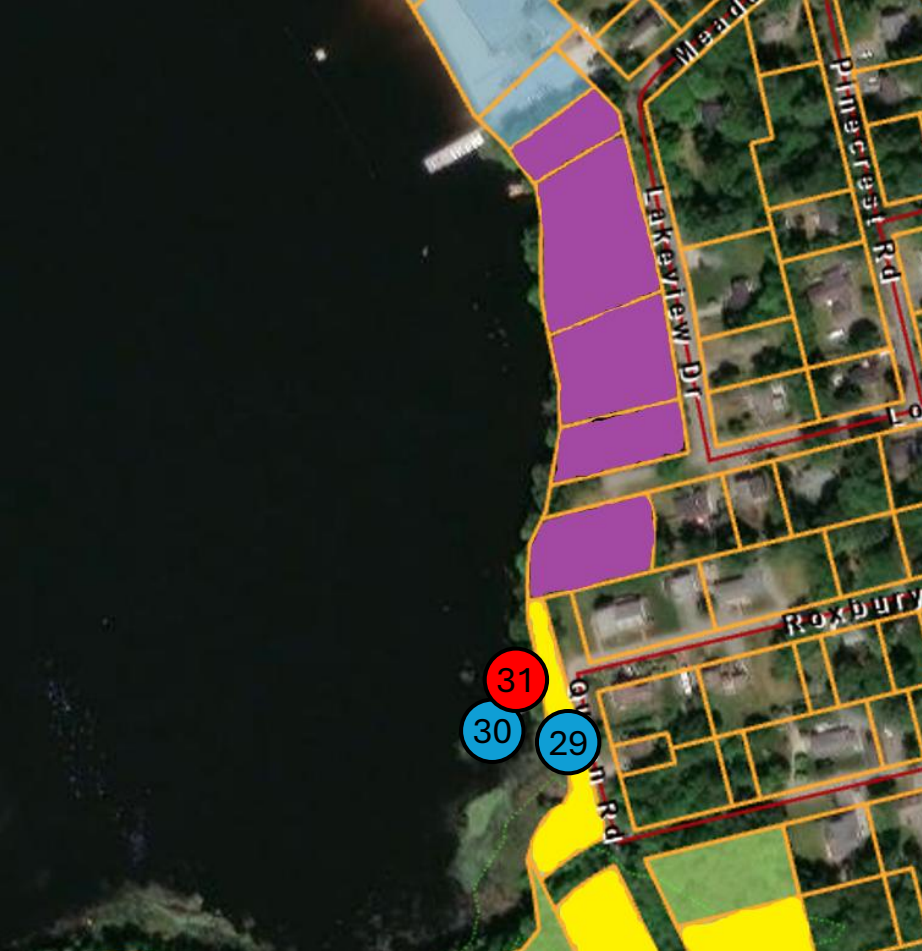


Note: watercraft in photo are located on private property



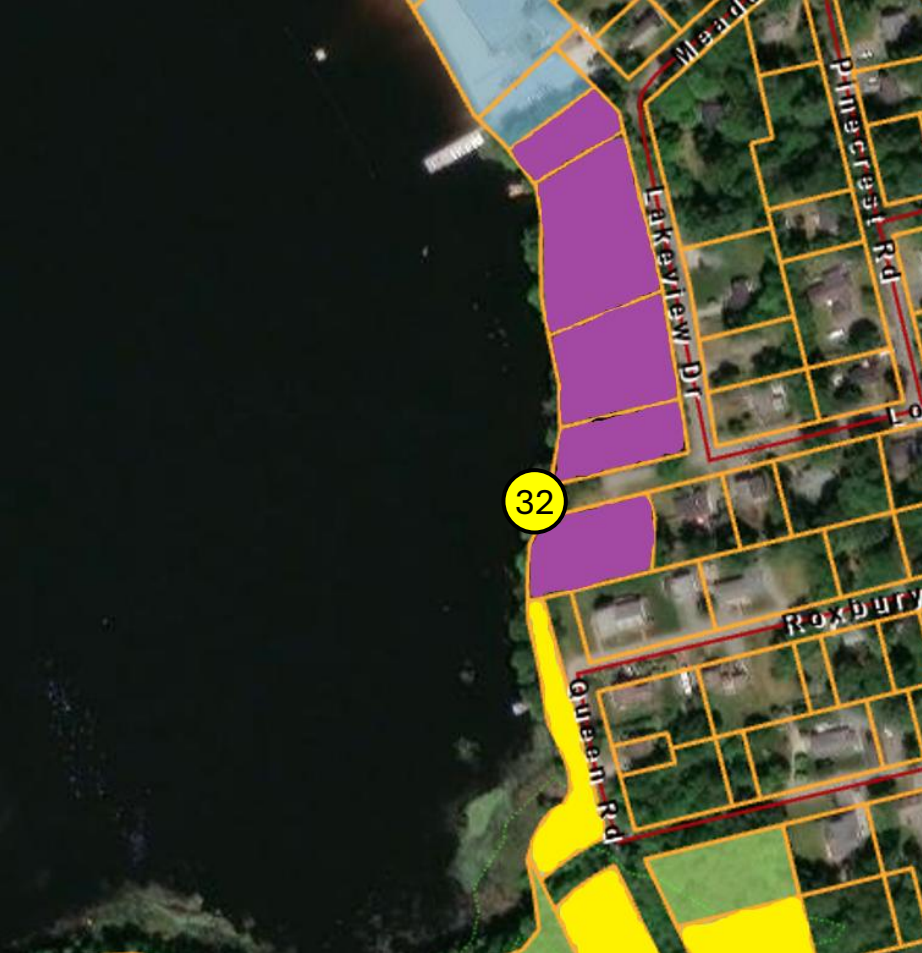
28 Water jug mooring





- 29 Five watercrafts
Metal rack
- 30 One Boat
Two watercrafts
- 31 Dock – good condition, unlicensed





- 32 Fence and landscaping
 Plastic fencing across gap
 Difficult to see in photo
 Green chicken wire
 Metal stake