



G7 Lab LLC

160 AYER RD, UNIT 3
LITTLETON, MA 01460

Presentation Overview



Proposed
company
overview



Company Quality
Policy



Analytical
Capabilities



Proposed layout



Parking

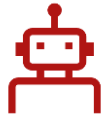


Steps to follow



Questions

Company Overview



G7 Lab LLC will be a full service Cannabis Testing Laboratory for Adult use and Medicinal Use with full compliance of Cannabis commission regulation 935 CMR 500.160 and



DPH Protocol for sampling and Analysis of finished Medical Marijuana products and Marijuana infused Products



Quality assurance program plan for Analytical testing Laboratories performing analysis of Finished Medical Marijuana products and Marijuana-Infused products in MA



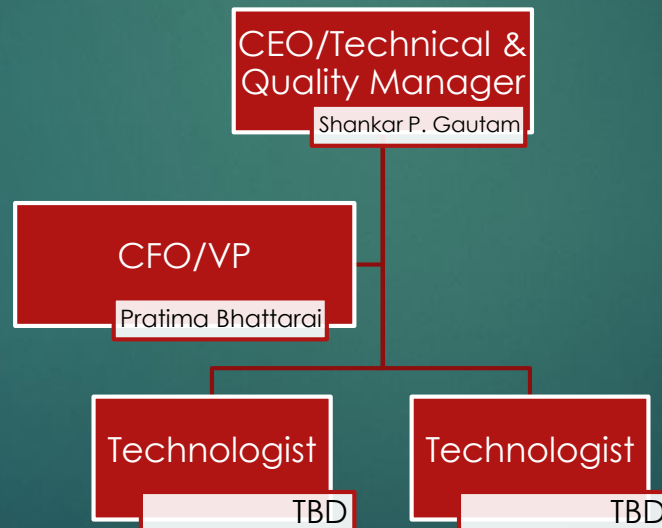
Approval from all local entities including but not limited to: Board of selectmen, planning Board, Board of health, local law enforcement, fire department and all applicable local and State governing bodies.



Cultivation, Selling, distribution or consumption of Marijuana are not applicable to the facility and is strictly prohibited in the premises.

Company Overview

- ▶ Our Team
- ▶ Shankar P. Gautam: Founder/CEO/Technical and Quality Manager
- ▶ Pratima Bhattarai :VP/CFO



G7 Lab LLC Principals:

- ▶ G7 Lab LLC Principals:
- ▶ Shankar P. Gautam: Founder/CEO/Technical and Quality Manager
- ▶ 12 years experience in Analytical Chemistry, Toxicology, Reference and Health Care Clinical Laboratories.
- ▶ Work experience: CPI International, Redwood Toxicology, Mayo Medical Laboratories Mayo Clinic, Boston Medical Center, Dana- Farber Cancer Institute
- ▶ Expertise: Analytical Method Development, Instrument Validation, Mass Spectrometry, Clinical Automation, New Lab Design, Technology Transfer, IT/LIS configuration, Toxicology, Clinical Chemistry, Molecular and Genetic Testing
- ▶ Education: BS, Cell and Molecular Biology, Biochemistry, Winona State University(2008). Big Data Social Analytics, MIT (2017)

G7 Lab Principals...

- ▶ Pratima Bhattarai: VP/CFO
- ▶ 5 years of Experience as a consultant and Business System Analyst in Healthcare Information Technology
- ▶ Work experience: New York State, Well Care, McKesson and Change Healthcare, BCBS of MA
- ▶ Education: BA, Public Health, Monroe College (2012), MBA Monroe College (2014)

Company Quality Policy



Strict adherence to
935 CMR 500.160



Will obtain
ISO17025:2017
certification



Will follow all Good
Laboratory practices
(GLP)



DPH: *Quality assurance program plan for Analytical testing Laboratories performing analysis of Finished Adult Use and Medical Marijuana products and Marijuana-Infused products in MA*



Safety of personal
with proper
protective
equipment, gloves,
lab coats)

Company Quality Policy: Waste Disposal



WASTE WILL BE HANDLED AS PER CANNABIS COMMISSION 500.105(12) AND WASTE MANAGEMENT REQUIREMENTS AND MASS DEP REGULATION (310 CMR 19.017)



MARIJUANA PLANTS WOULD FALL UNDER "COMMERCIAL ORGANIC MATERIAL" ONLY BANNED FROM DISPOSAL IF > 1 TON/WEEK



SHOULD BE STORED IN SECURE AREA AND/OR IN LOCKED CONTAINERS UNTIL COLLECTED



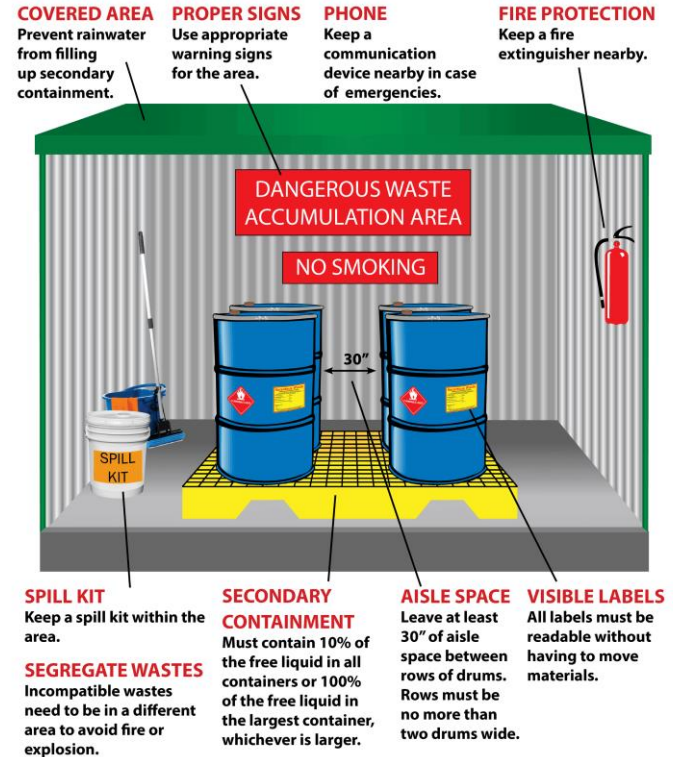
MARIJUANA MAY BE SENT TO ANY COMPOST OR AD FACILITY IN COMPLIANCE WITH MASS DEP REGULATIONS.



MARIJUANA WASTE GROUND UP AND MIXED WITH SOLID WASTE TO RENDER CANNABIS UNUSABLE, MIX WITH MATERIAL SUCH AS FOOD WASTE, MANURE, SOIL, SAND, KITTY LITTER, COFFEE GROUNDS MAY BE SENT TO ANY SOLID WASTE FACILITY IN COMPLIANCE WITH MASS DEP REGULATION

Hazardous Waste

- ▶ All Hazardous waste will be collected in a satellite waste collection area on top of secondary liquid containment
- ▶ Will follow storage requirement for very small quantity generator (VSQG) as for DEP of MA
- ▶ Generates less than 220 pounds (about 27 gallons) of hazardous waste or waste oil per month and no acutely hazardous waste.
- ▶ May accumulate up to 2,200 pounds (about 270 gallons) for an indefinite period of time.
- ▶ The picture represents a good example of satellite waste collection area within a laboratory as permitted by DEP



Flammables and Corrosive storage

- ▶ Flammables: Double walled steel features 1-1/2" insulating air space. Chemical safety cabinet exceeds the NFPA Flammable Liquid Storage Code #30 and the OSHA standard for storage of class I, II and III liquids.
- ▶ Corrosives safety cabinets exceeds the NFPA Flammable liquid storage code #30 and the OSHA standard for storage of Class I, II and III liquids



Analytical Capabilities



Required testing for cannabis products in State of MA.



Pesticides : LCMS/MS, GCMS/MS



Metals: Hg, Cd, Pb, As, (ICPMS)



Bacteriological Contaminants : PCR, Aerobic Plate Count, ELISA



Cannabinoid Profiles: HPLC

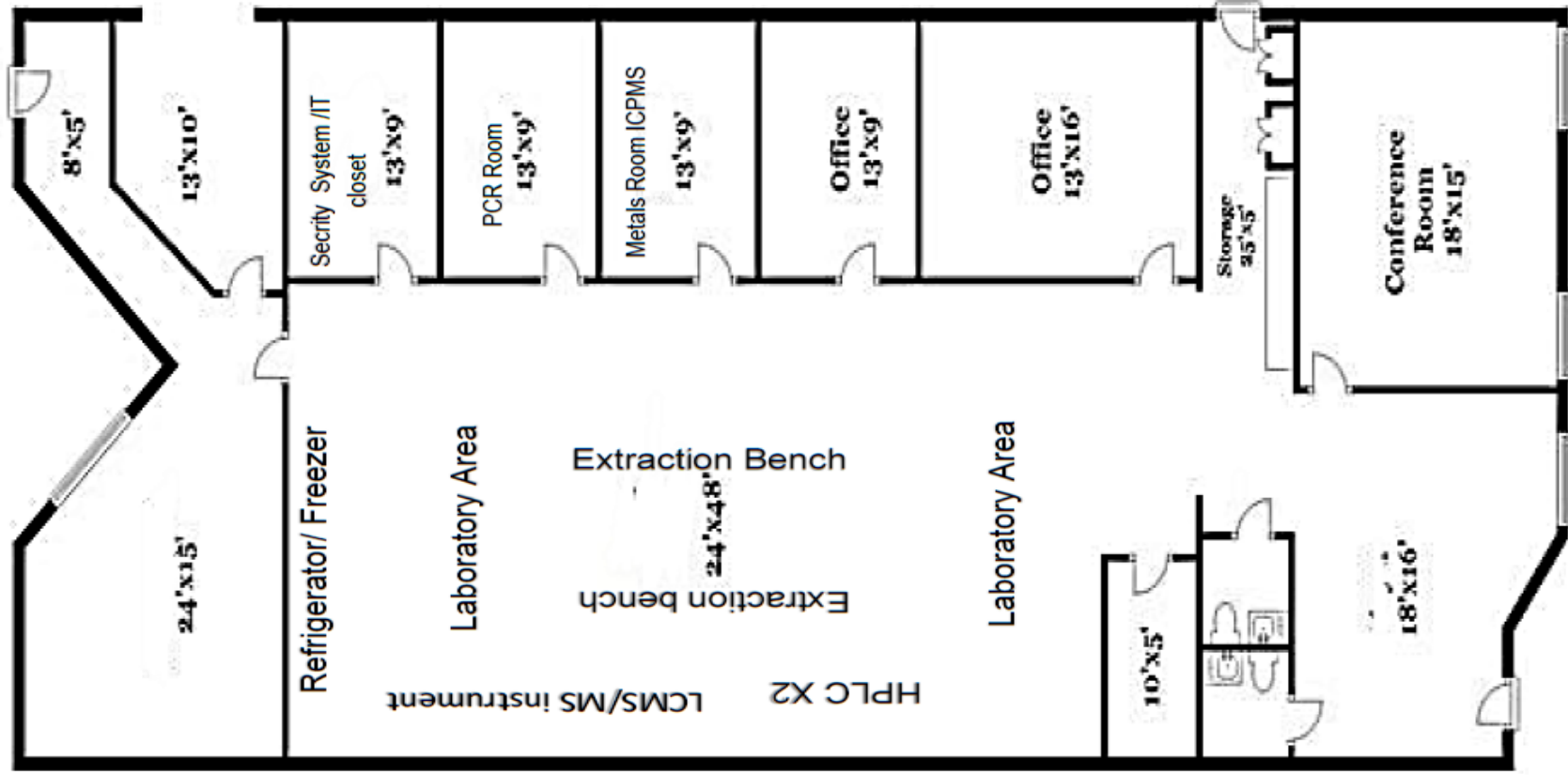


Residual Solvents: GC-FID

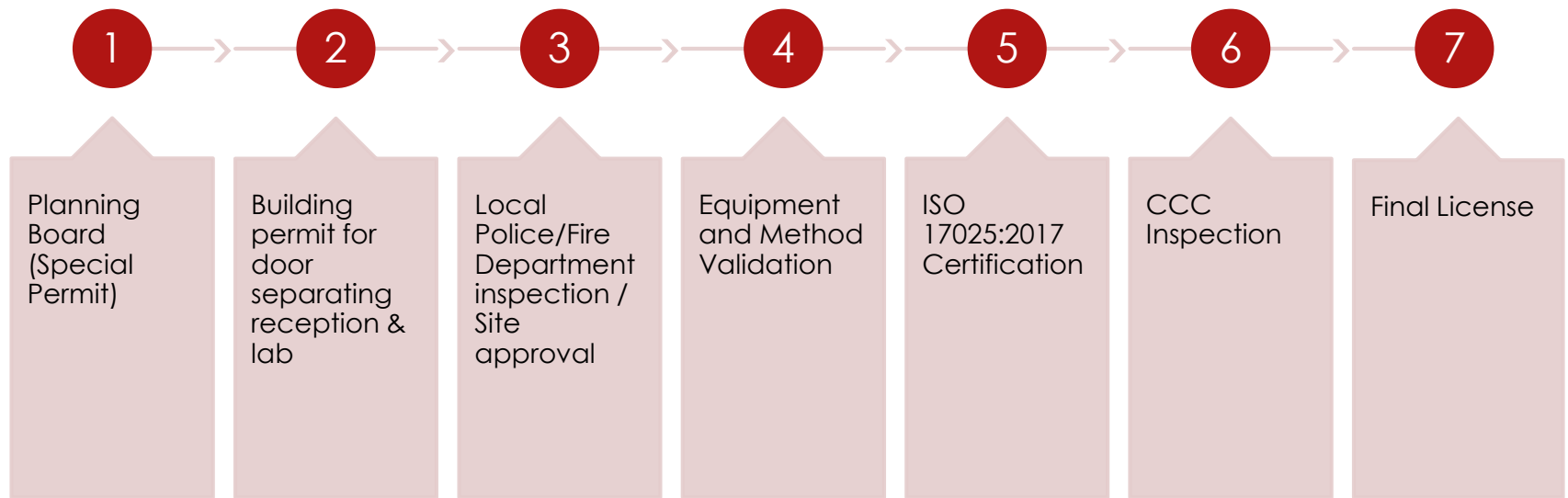


% Moisture: Gravimetric Scale

Proposed Layout:



Steps to follow



Parking



LITTLETON BY LAWS REQUIRE 1
SPACE PER 1.25 EMPLOYEES
ON THE LARGEST SHIFT.



EMPLOYEES IN THE LARGEST
SHIFT $= 5 \times 1.25 = 6.25$



PARKING GIVEN PER UNIT $= 8$

Questions?
Comments ,
feedback

G7LABLLC@GMAIL.COM

References:

- ▶ 935 CMR 500.000; ADULT USE OF MARIJUANA
- ▶ Quality Assurance program plan for Analytical testing Laboratories
- ▶ Performing Analyses of Finished Medical Marijuana Product and Marijuana-Infused Products in Massachusetts.
- ▶ Draft Guidance Cannabis Solid Use Disposal, John Fischer, Mass DEP