



PLANNING BOARD

P.O. Box 1305
Littleton, Massachusetts 01460

RICHARD WAY CERTIFICATE OF VOTE

March 11, 2011

RE: RICHARD WAY
Definitive Subdivision Roadway
Vote to Petition Selectmen to Accept Richard Way

This certifies that at the Planning Board meeting of *Thursday, March 10, 2011*, the Planning Board voted 4 to 0 in favor of Petitioning the Board of Selectmen to proceed with the Acceptance of Richard Way.

This subdivision, a 7-lot Open Space subdivision has been completed; the As-Built Plans have been submitted and approved by the Planning Board, Highway Superintendent, and Water Department. The easement for drainage appurtenances inadvertently constructed on private property has been received and recorded at the Registry of Deeds.

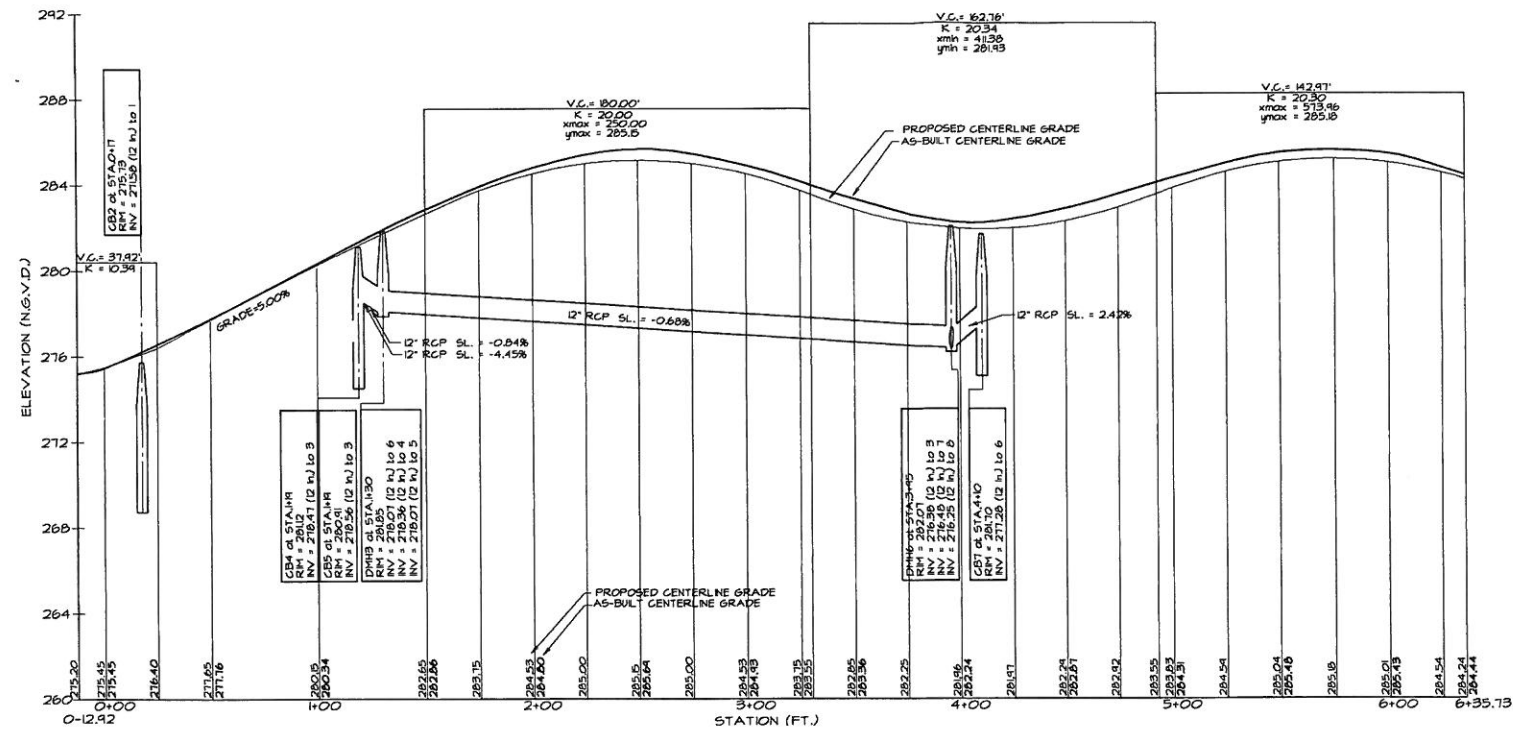
The Planning Board, by a vote on August 26, 2010, took the bond and completed the subdivision work, necessary repairs, and payment of bills associated with the project, following refusal of the developer to complete the work.

The Planning Board hereby petitions the Board of Selectmen to request acceptance of Richard Way at the May 2011 Annual Town Meeting.

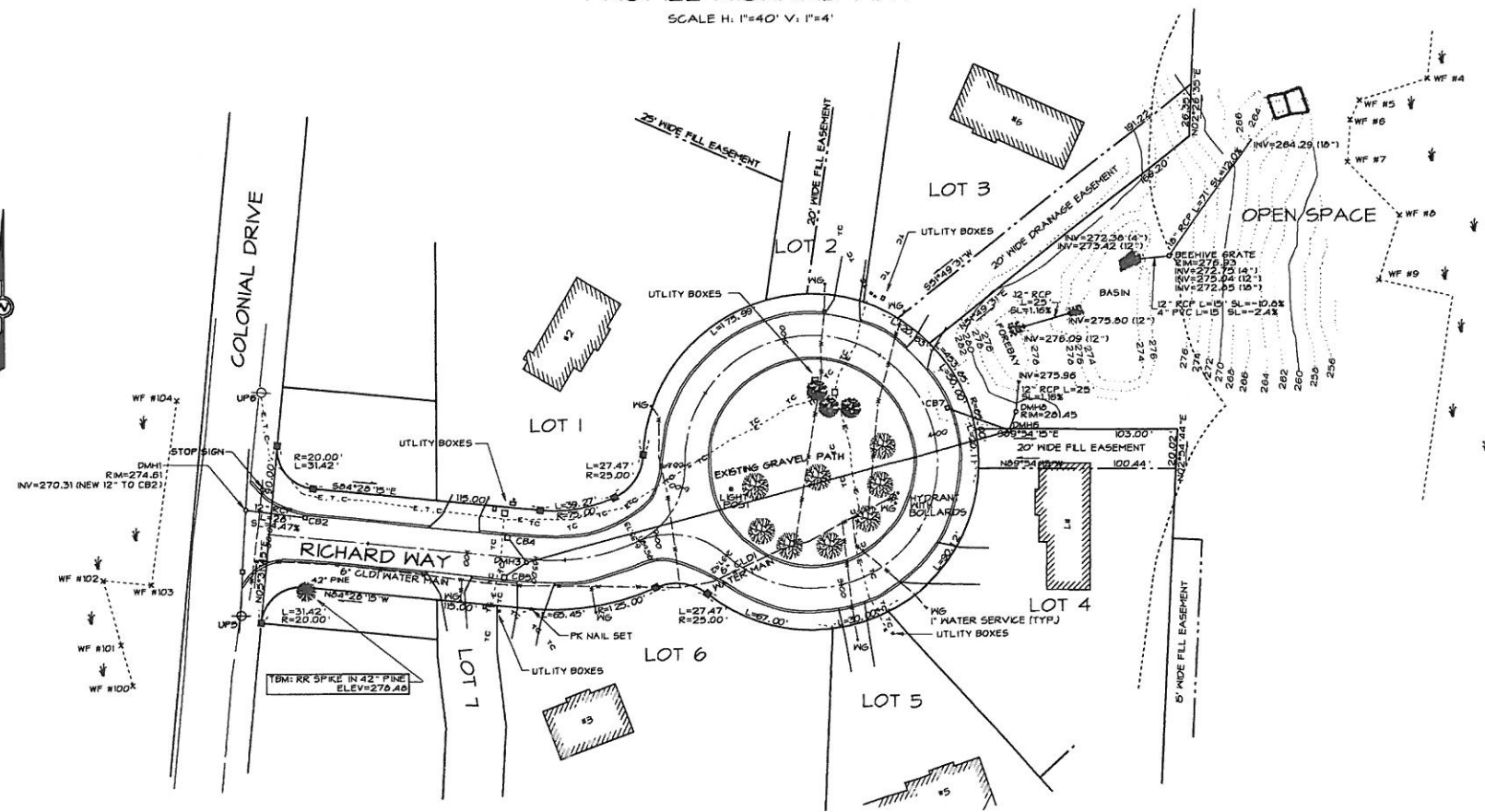
Signed:


Maren A. Toohill

Attachments: As-Built Plan (5 copies)
Definitive Subdivision Plan recorded at the Registry of Deeds
Metes and Bounds Description of roadway



PROFILE RICHARD WAY
SCALE H: 1"=40' V: 1"=4'



PLAN RICHARD WAY
SCALE 1"=40'

LEGEND

- EXISTING 2' CONTOURS
- EXISTING 10' CONTOURS
- - - AS BUILT ELECTRIC, CABLE, TELEPHONE LINES
- - - AS BUILT ELECTRIC LINES
- TC AS BUILT TELEPHONE AND CABLE LINES
- DMH AS BUILT DRAIN MANHOLE
- CB AS BUILT CATCH BASIN
- WG AS BUILT WATER GATE
- W AS BUILT WATER LINE
- B AS BUILT BUSH
- T AS BUILT TREE
- LP AS BUILT LIGHT POST
- DRS DRAINAGE RIP RAP STONE
- CONCRETE BOUND WITH DRILL HOLE SET

PLAN AND PROFILE
AS-BUILT

LOCATION:

RICHARD WAY
LITTLETON, MASSACHUSETTS

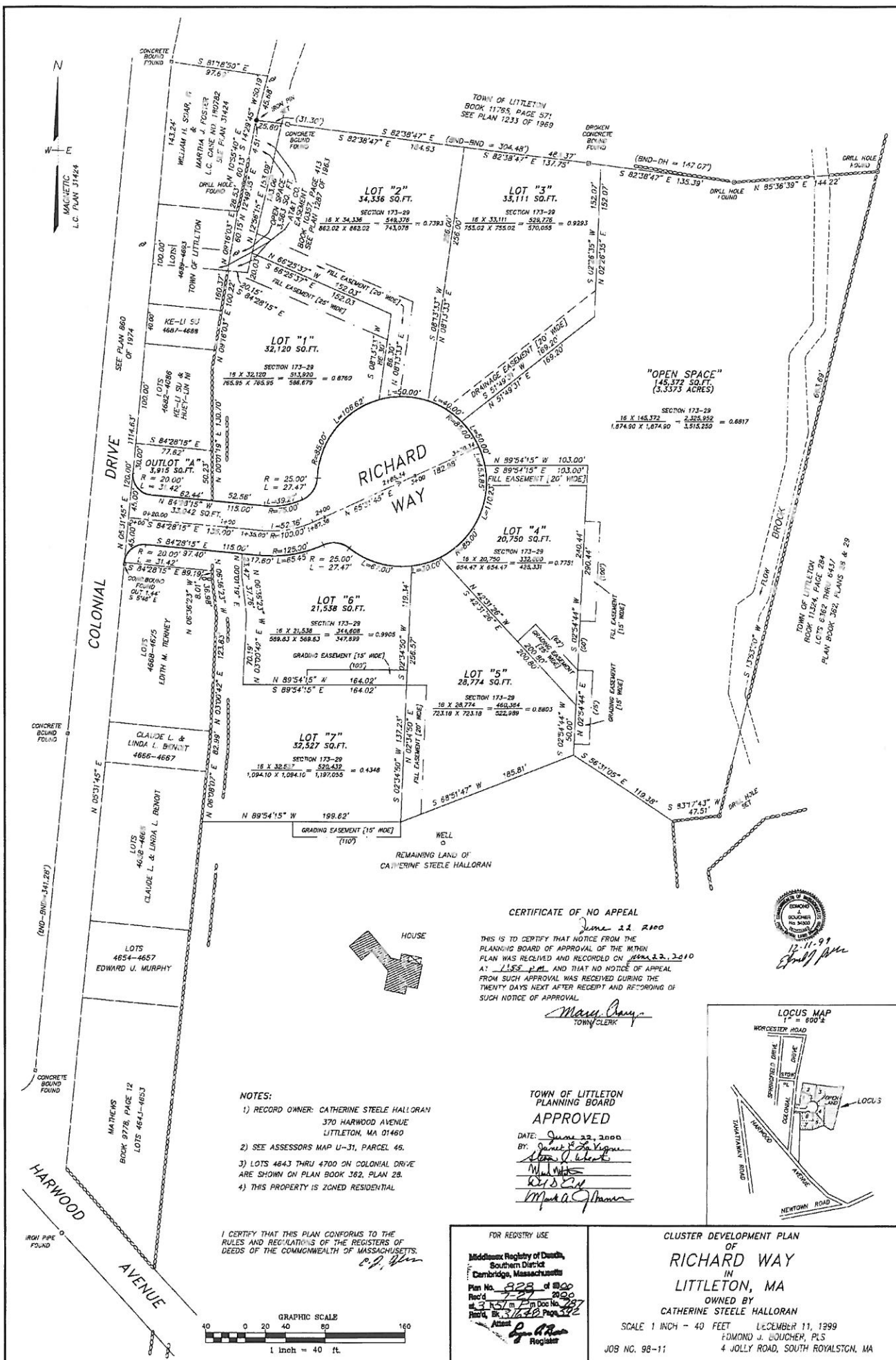
APPLICANT:

APPLEWOOD CONSTRUCTION
10 PONDVIEW PLACE
TYNGSBORO, MASSACHUSETTS 01879
(978) 649-2727

DATE: NOVEMBER 17, 2005

SCALE: 1 INCH = 40 FEET

FORE-SITE
Engineering Associates, Inc.
16 Gleasondale Road, Suite 1-1
Stow, Massachusetts 01775
(978) 461-2350



Richard Way

Beginning at the Easterly sideline of Colonial Drive and the Northerly sideline of Richard Way at a concrete bound with drill hole;

Thence running along a curve to the left having a length of 31.42' and a radius of 20.00' to a concrete bound with drill hole;

Thence running S84°28'15"E 115.00' to a concrete bound with drill hole;

Thence running along a curve to the left having a length of 39.27' and a radius of 75.00' to a concrete bound with drill hole;

Thence running along a curve to the left having a length of 27.47' and a radius of 25.00' to a concrete bound with drill hole;

Thence running along a curve to the right having a length of 453.85' and a radius of 85.00' to a concrete bound with drill hole;

Thence running along a curve to the left having a length of 27.47' and a radius of 25.00' to a concrete bound with drill hole;

Thence running along a curve to the right having a length of 65.45' and a radius of 125.00' to a pk nail in a driveway;

Thence running N84°28'15"W 115.00' to a concrete bound with drill hole;

Thence running along a curve to the left having a length of 31.42' and a radius of 20.00' to a concrete bound with drill hole on the Easterly sideline of Colonial Drive;

Thence turning and running along the Easterly sideline of Colonial Drive N05°31'45"E 90.00' to the point of beginning having an area of 33,042 Sq. Ft.