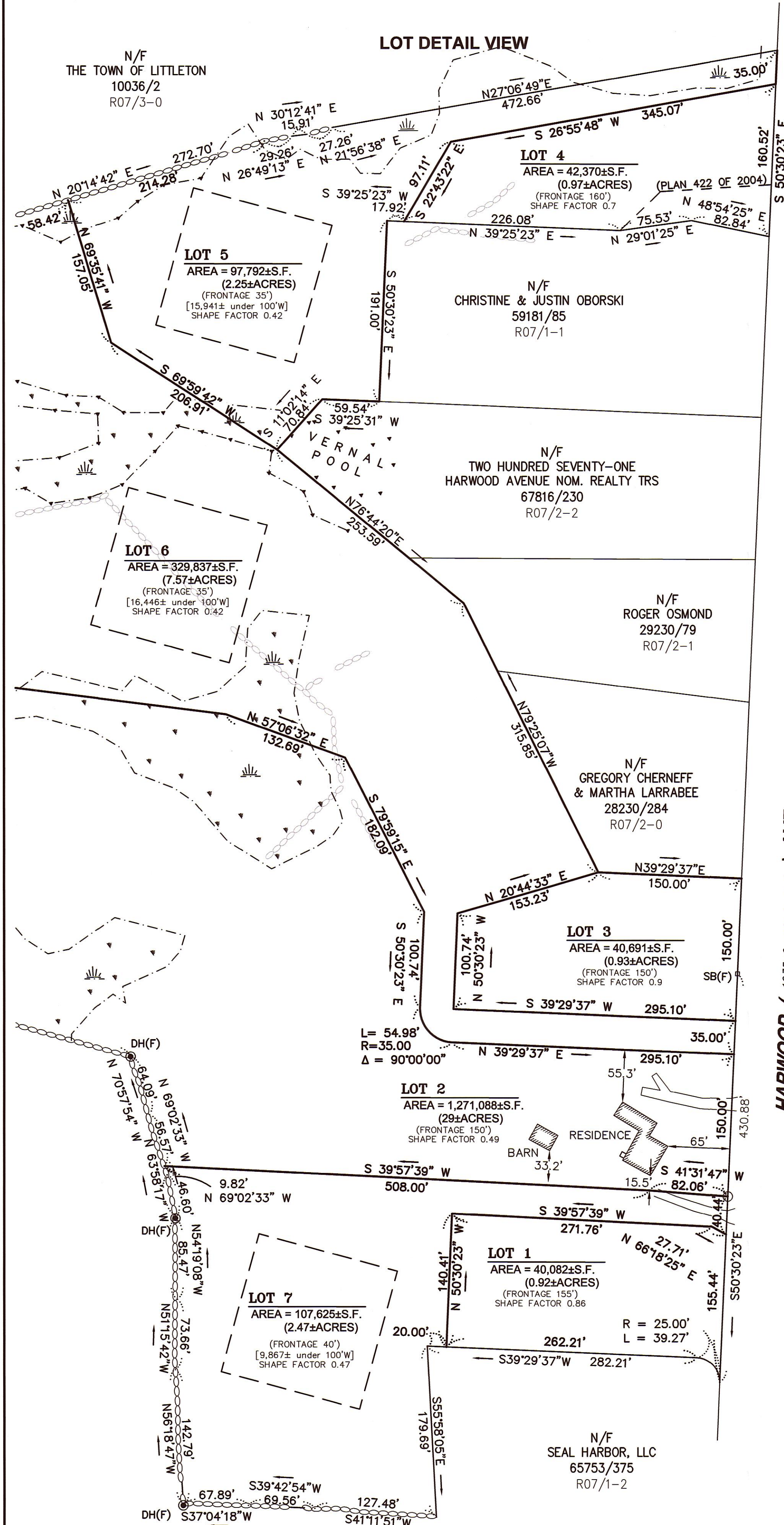
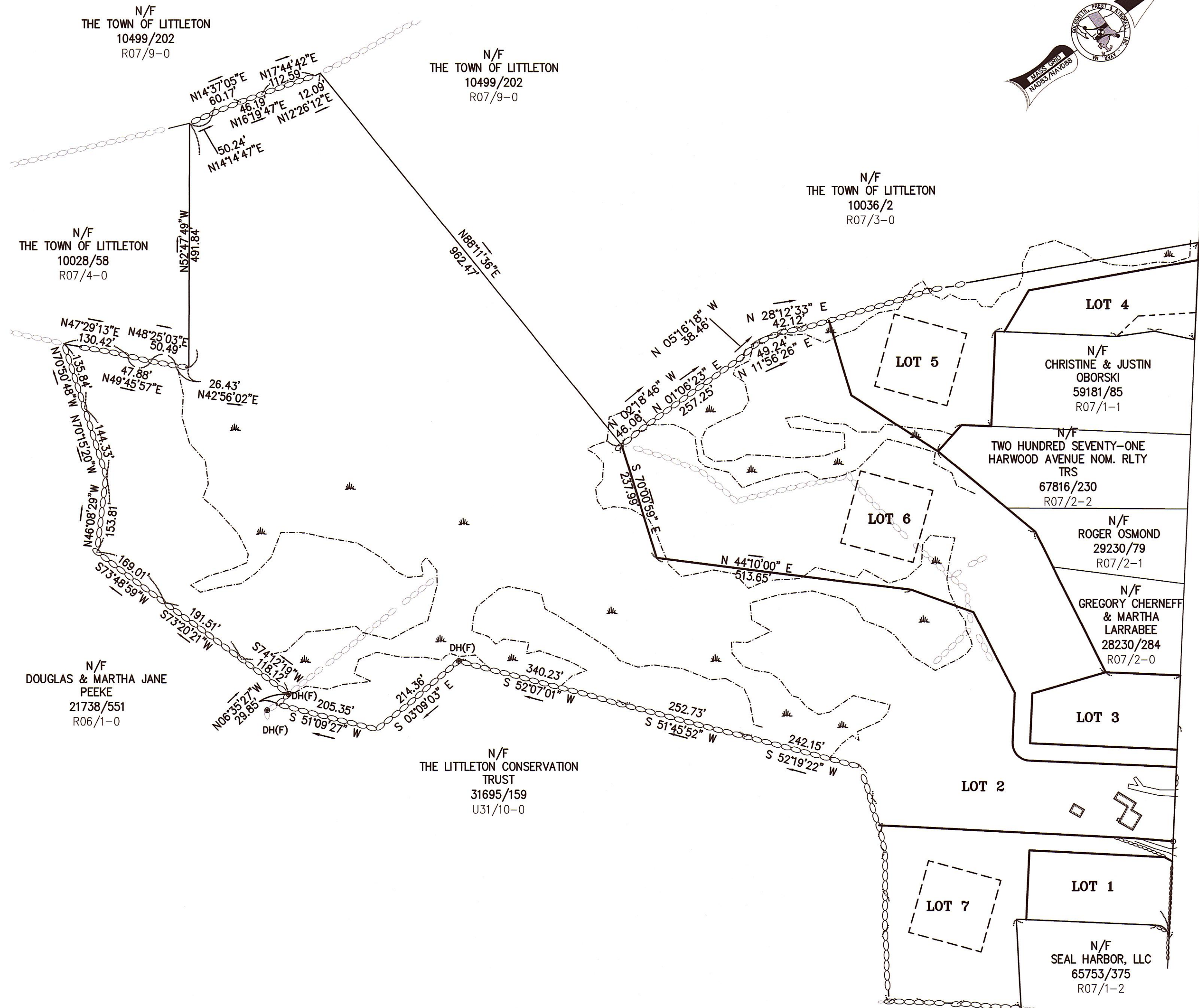


**REFERENCES:**

PLANS ON FILE AT THE MIDDLESEX SOUTH DISTRICT REGISTRY OF DEEDS

- 1) PLAN 880 OF 2000 "PLAN OF LAND IN LITTLETON, MASS" BY DAVID E. ROSS; MAY 2000
- 2) PLAN 545 OF 2015 "PLAN FOR MARK GALLAGHER" BY PLACES, Inc.; JUNE 4, 2015
- 3) PLAN 1299 OF 1997 "PLAN OF LAND IN LITTLETON, MASS" BY DAVID E. ROSS; NOV., 1997
- 4) PLAN 422 OF 2004 "PLAN OF LAND IN LITTLETON, MASS" BY DAVID E. ROSS; FEB., 2004
- 5) PLAN 1433 OF 1974 "LAND IN LITTLETON, MASS" BY CHARLES A. PERKINS; JULY, 1974
- 6) PLAN 1439 OF 1998 "PLAN OF LAND ON HARWOOD AVE." BY LAKEVIEW ENG; JUNE 28, 1998
- 7) 1935 COUNTY LAYOUT OF HARWOOD AVENUE.
- 8) APPROVAL NOT REQUIRED PLAN PREPARED BY THIS OFFICE FOR GLAVEY FAMILY IRREVOCABLE TRUST DATED OCTOBER 4, 2018, PLANNING BOARD ENDORSED OCTOBER 4, 2018 (LOT A).
- 9) DEFINITIVE SUBDIVISION, OPEN SPACE DEVELOPMENT, HEALY CORNER PLAN SET, PREPARED FOR GLAVEY FAMILY TRUST, BY THIS OFFICE, REVISION DATED OCTOBER 8, 2019.



**FOR REGISTRY USE ONLY**

**LEGEND**

N/F	NOW OR FORMERLY
1111/111	DEED BOOK/PAGE
(F)	FOUND
□	(SB) STONE BOUND
●	(DH) DRILL HOLE
∞	STONE WALL

ENDORSEMENT OF THIS PLAN BY THE TOWN OF LITTLETON PLANNING BOARD DOES NOT CONSTITUTE OR IMPLY APPROVAL OR ACKNOWLEDGEMENT THAT ANY LOT(S) OR PARCELS SHOWN HEREON ARE BUILDABLE FOR ANY PARTICULAR USE OR PURPOSE NOR COMPLIANCE WITH APPLICABLE ZONING LAWS, WETLAND REGULATIONS, TITLES OR OTHER LOCAL STATE, OR FEDERAL ORDINANCES

APPROVAL UNDER THE SUBDIVISION CONTROL LAW NOT REQUIRED.  
LITTLETON PLANNING BOARD

DATE: \_\_\_\_\_

THIS PLAN HAS BEEN PREPARED IN ACCORDANCE WITH THE RULES AND REGULATIONS OF THE REGISTERS OF DEEDS.

DAVID J. DeBAY, P.L.S. # 33887  
DATE: 10/28/2022

**GPR** Engineering Solutions for Land & Structures  
GOLDSMITH, PREST & RINGWALL, INC.  
39 MAIN STREET, SUITE 301, AYER, MA 01432  
CIVIL ENGINEERING • LAND SURVEYING • LAND PLANNING  
VOICE: 978.772.1590 FAX: 978.772.1591  
www.gpr-inc.com

**PLAN OF LAND IN LITTLETON, MASS.**

PREPARED FOR:  
GLAVEY FAMILY IRREVOCABLE TRUST  
195 TAHATTAWAN ROAD  
LITTLETON, MA.

P:\17-1171088\DWG\SURVEY\DWG\FINAL\171088\_B1P\_2A(2022).DWG