

Littleton Open Space and Recreation Plan

Community Forum on Recreation Needs June 17, 2015

*Funded by the Massachusetts Department of Housing and Community Development
District Local Technical Assistance (DLTA) grant and the Town of Littleton*



Tonight's Agenda

Context

Open Space and Recreation Plan/Survey
Community Information

Discuss

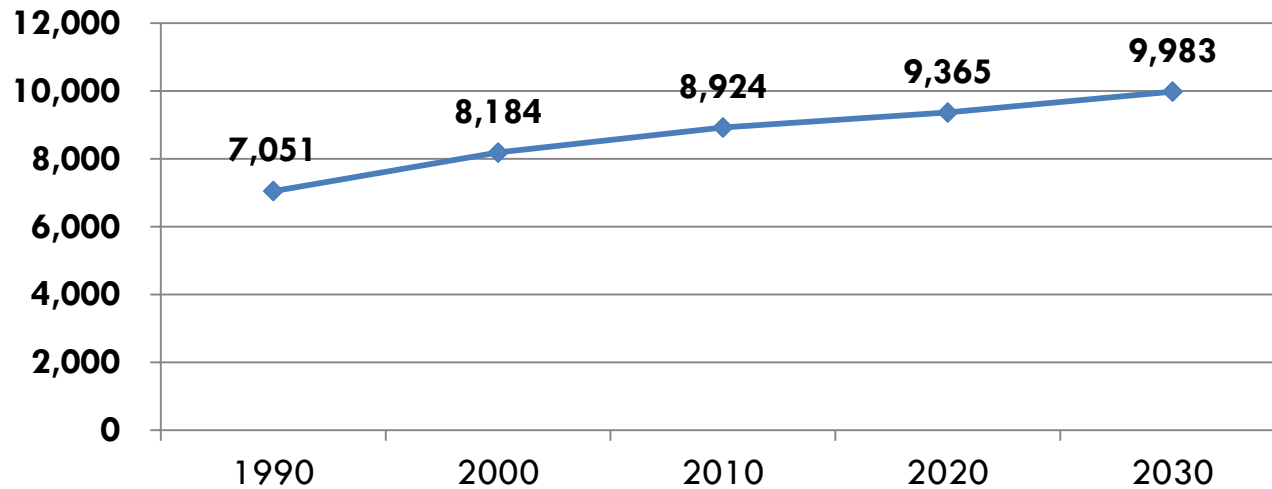
What are your recreation needs?
Where/how will these needs be met?

Next Steps

Open Space and Recreation Plan



Littleton Population and Projected Change



Source: U.S. Census & MetroFuture Projections

9% increase 2000-2010

Growth thru 2030 in 55+ groups only

36 % of households have children

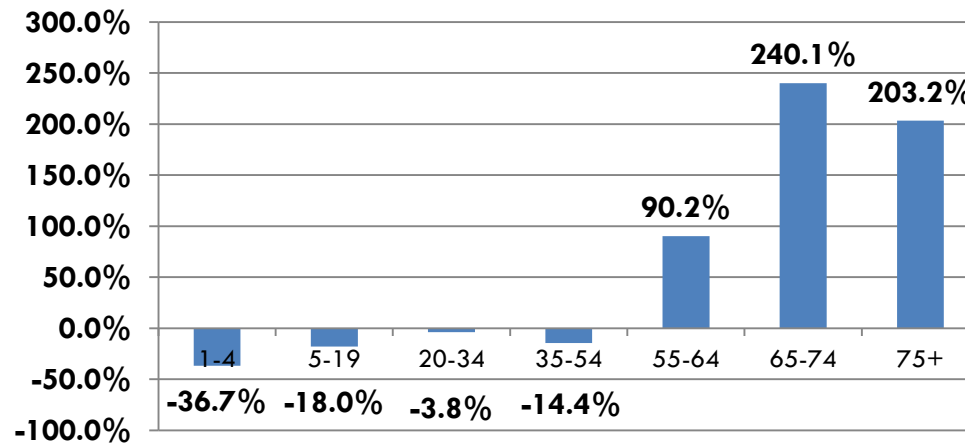
School enrollment steady since 2005

Demographic Information

Littleton Population Change by Age, 2000-2030

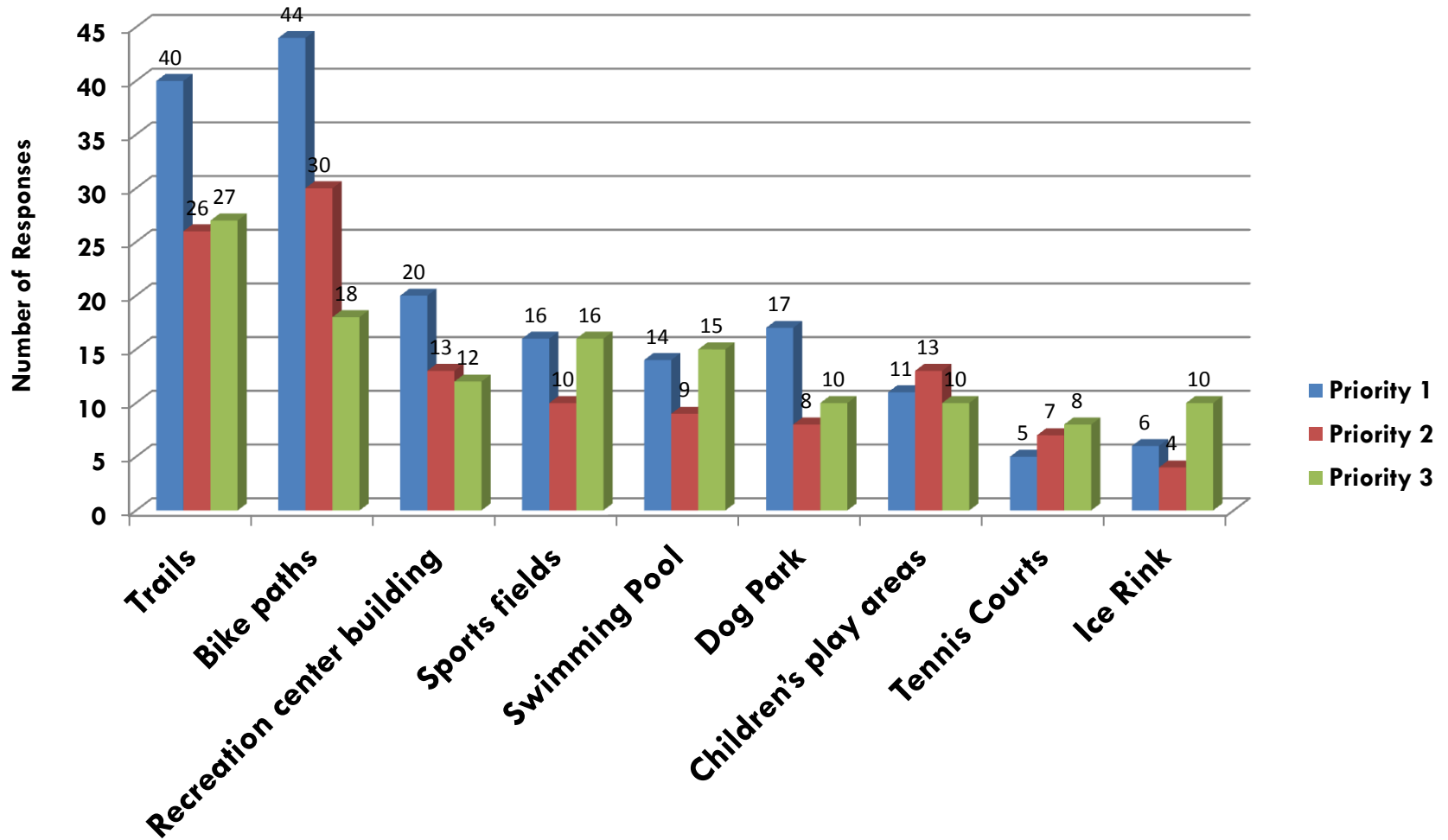
Age	2000	2010	2020	2030	Change 2000-2030	% Change 2000-2030
1-4	671	516	361	425	-246	-36.7%
5-19	1,672	2,006	1,614	1,371	-301	-18.0%
20-34	1,213	901	1,749	1,166	-47	-3.8%
35-54	2,916	3,120	2,420	2,496	-420	-14.4%
55-64	747	1,136	1,397	1,421	674	90.2%
65-74	485	647	1,627	1,650	1,165	240.1%
75+	480	598	1,435	1,455	975	203.2%

Percent Change in Population by Age, 2000-2030



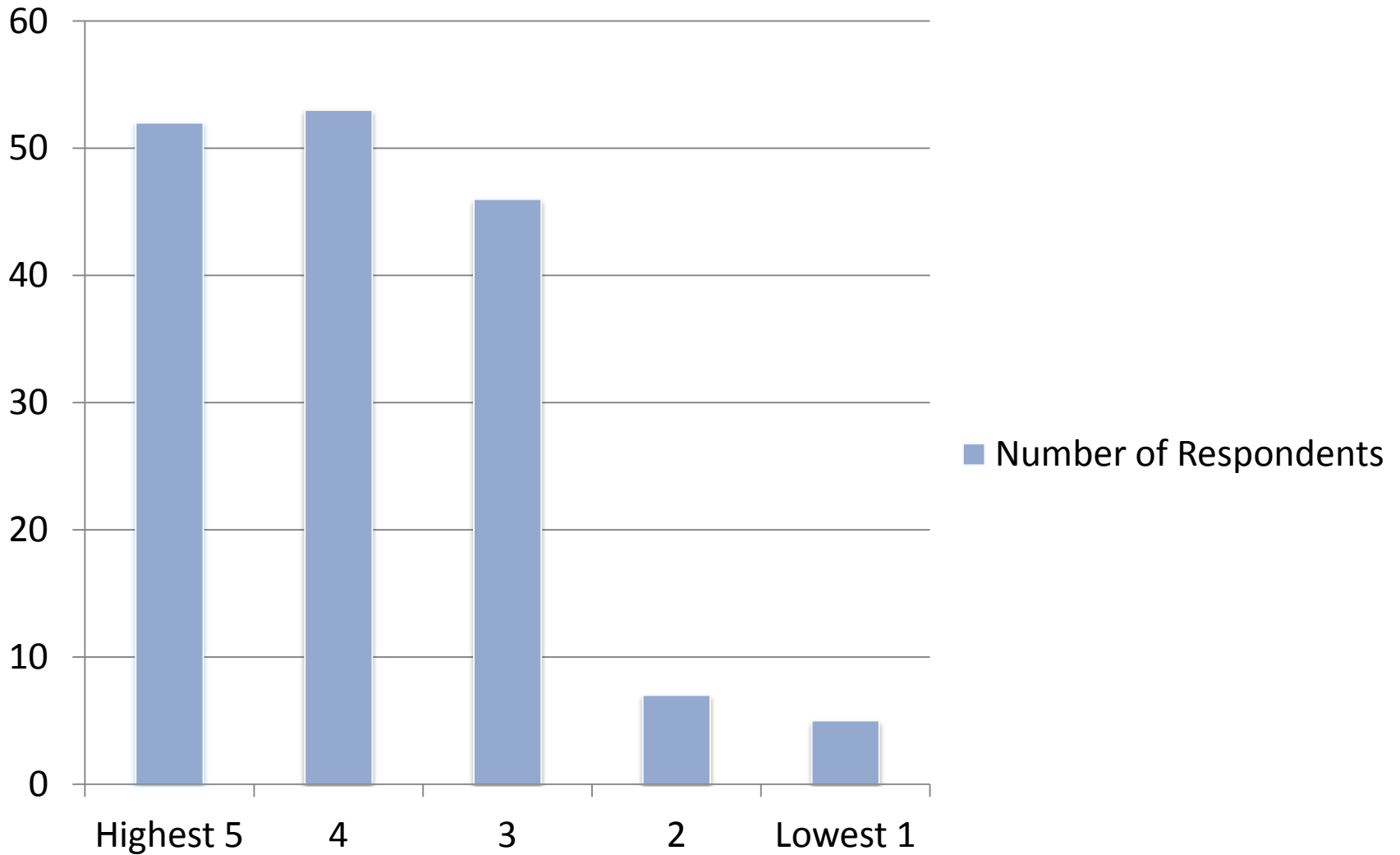
Source: U.S. Census and MAPC Projections

Recreation Needs from 2014 Survey





How Satisfied are You with Existing Facilities?



Littleton's Recreation Needs



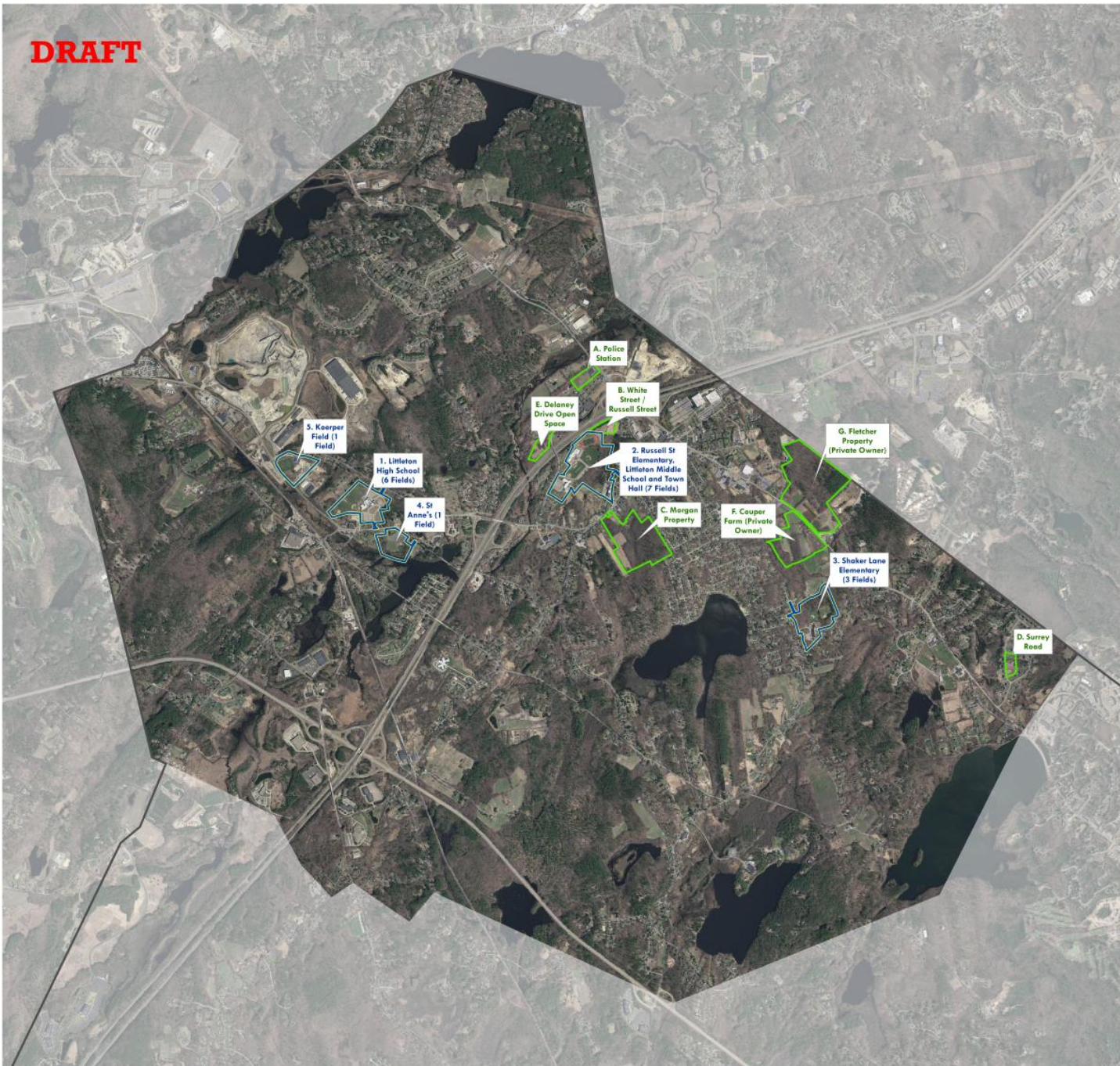
DRAFT

Littleton Recreation Study Map

Fields

 Existing

 Potential



The information depicted on this map is for planning purposes only. It is not adequate for legal boundary definition, regulatory interpretation, or parcel-level analyses.

Produced by:
Metropolitan Area Planning Council
60 Temple Place, Boston, MA 02111 | (617) 933-0700

Data Sources:
Town of Littleton
Metropolitan Area Planning Council (MAPC)
Massachusetts Geographic Information System (MassGIS)
Massachusetts Department of Transportation (MassDOT)

June, 2015



Existing Fields

1. High School
2. Russell St. Elementary, Middle School and Town Hall
3. Shaker Lane Elementary
4. Saint Anne's
5. Koerper



Possible Additional Recreational Areas

- A. Police Station
- B. White Street/Russell Street
- C. Morgan Property
- D. Surrey Road
- E. Delaney Drive
- F. Couper Farm (Private Owner)
- G. Fletcher Property (Private Owner)