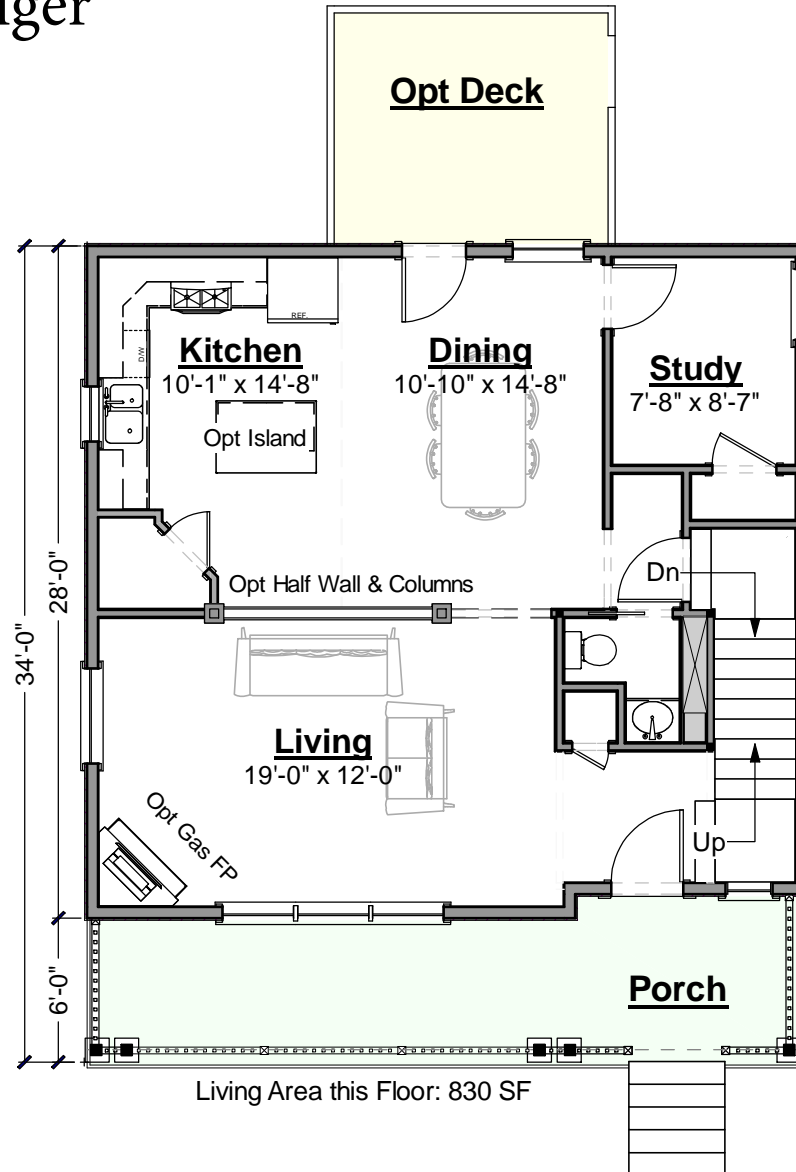


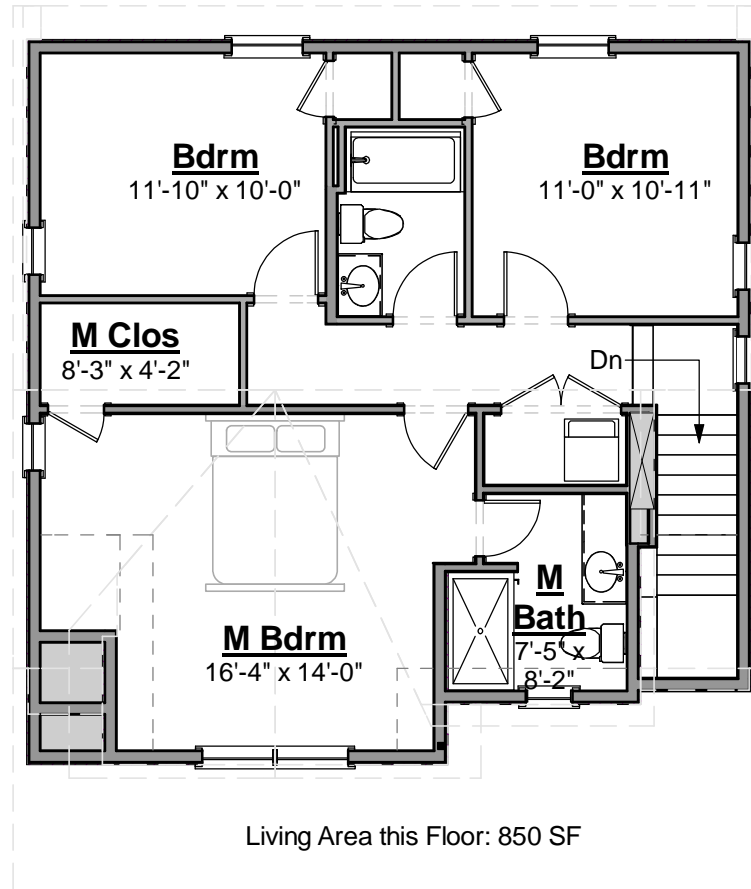
Laughing Tiger



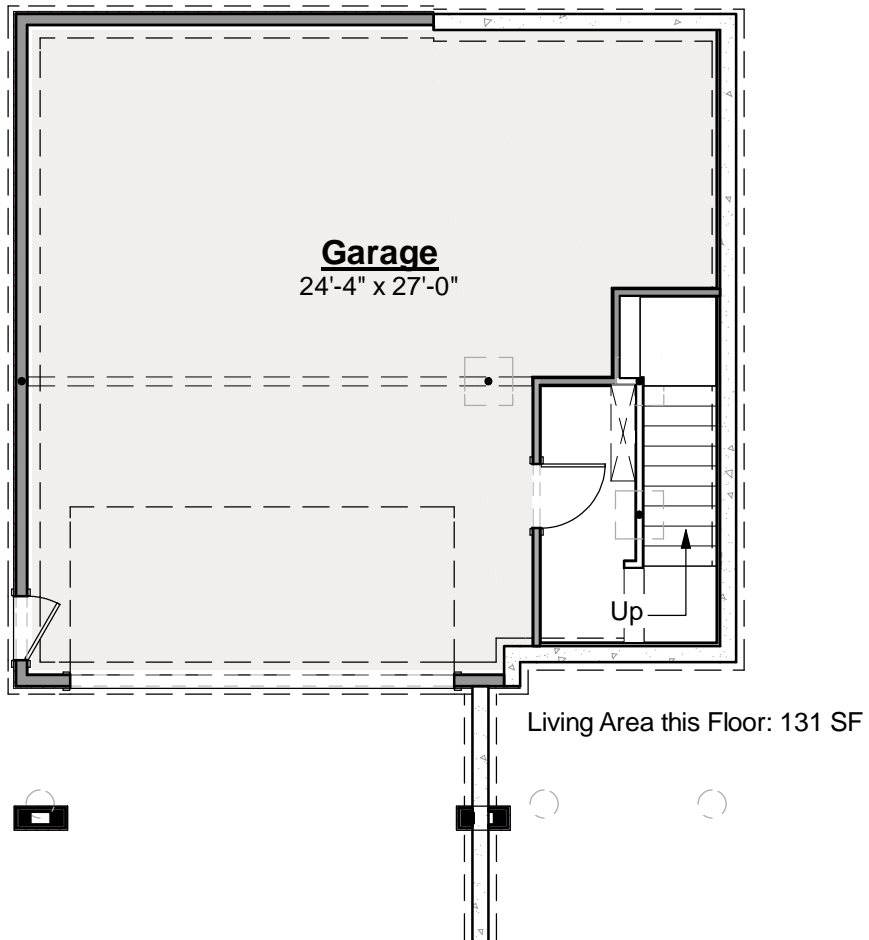
Laughing Tiger



Laughing Tiger



Laughing Tiger

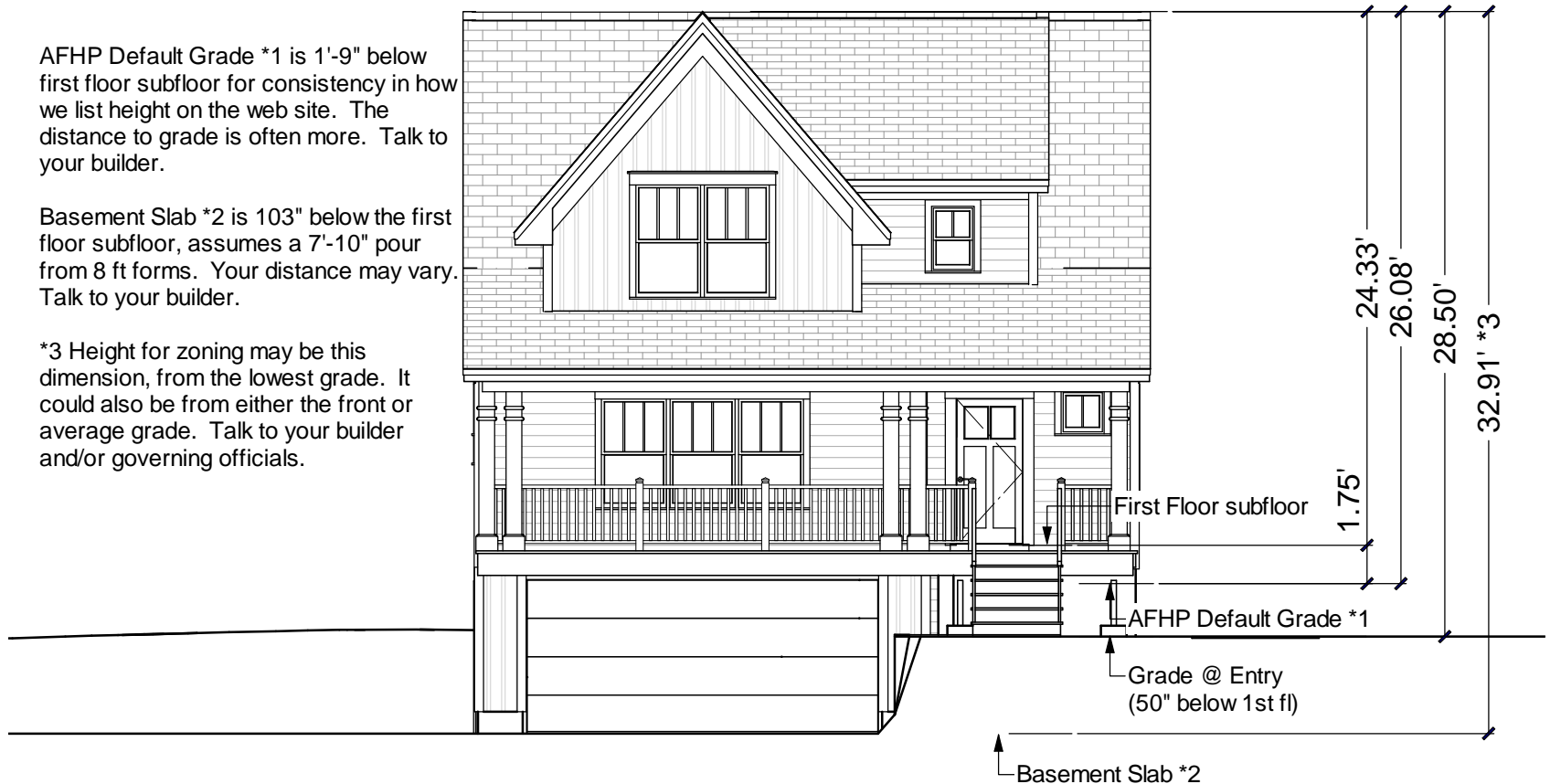


Laughing Tiger

AFHP Default Grade *1 is 1'-9" below first floor subfloor for consistency in how we list height on the web site. The distance to grade is often more. Talk to your builder.

Basement Slab *2 is 103" below the first floor subfloor, assumes a 7'-10" pour from 8 ft forms. Your distance may vary. Talk to your builder.

*3 Height for zoning may be this dimension, from the lowest grade. It could also be from either the front or average grade. Talk to your builder and/or governing officials.



Aaron Prime

280.001

© 2013 Art Form Architecture, Inc. All Rights Reserved . <http://www.artformhomeplans.com>



This Prime version of Aaron is for the traditional 2 generation family. Generous room sizes are complimented by an upstairs study Nook and a first floor study. There's room for everybody to be social, or not.

That giant walk-in laundry is the busy parent's dream. Access to the basement is convenient, allowing even more expansion - what we used to call the "Ruckus Room".

	Living Area	Bedrooms	Bathrooms	Ceiling Height Shown	Ceiling Height Possible*
First Floor	1050 SF	1	1.0	8'-0"	8'-8"
Second Floor	1187 SF	3	2.0	8'-0"	8'-0"
Total Above Grade	2237 SF	4	3.0		
Basement	0 SF	0	0.0		

* -- Increasing ceiling height requires a Major Change.

<http://www.artformhomeplans.com/Contact.a5w>

<http://www.artformhomeplans.com/TermsConditions.a5w>

Aaron Prime

280.001

© 2013 Art Form Architecture, Inc. All Rights Reserved . <http://www.artformhomeplans.com>

First Floor

Living Area: 1050 SF

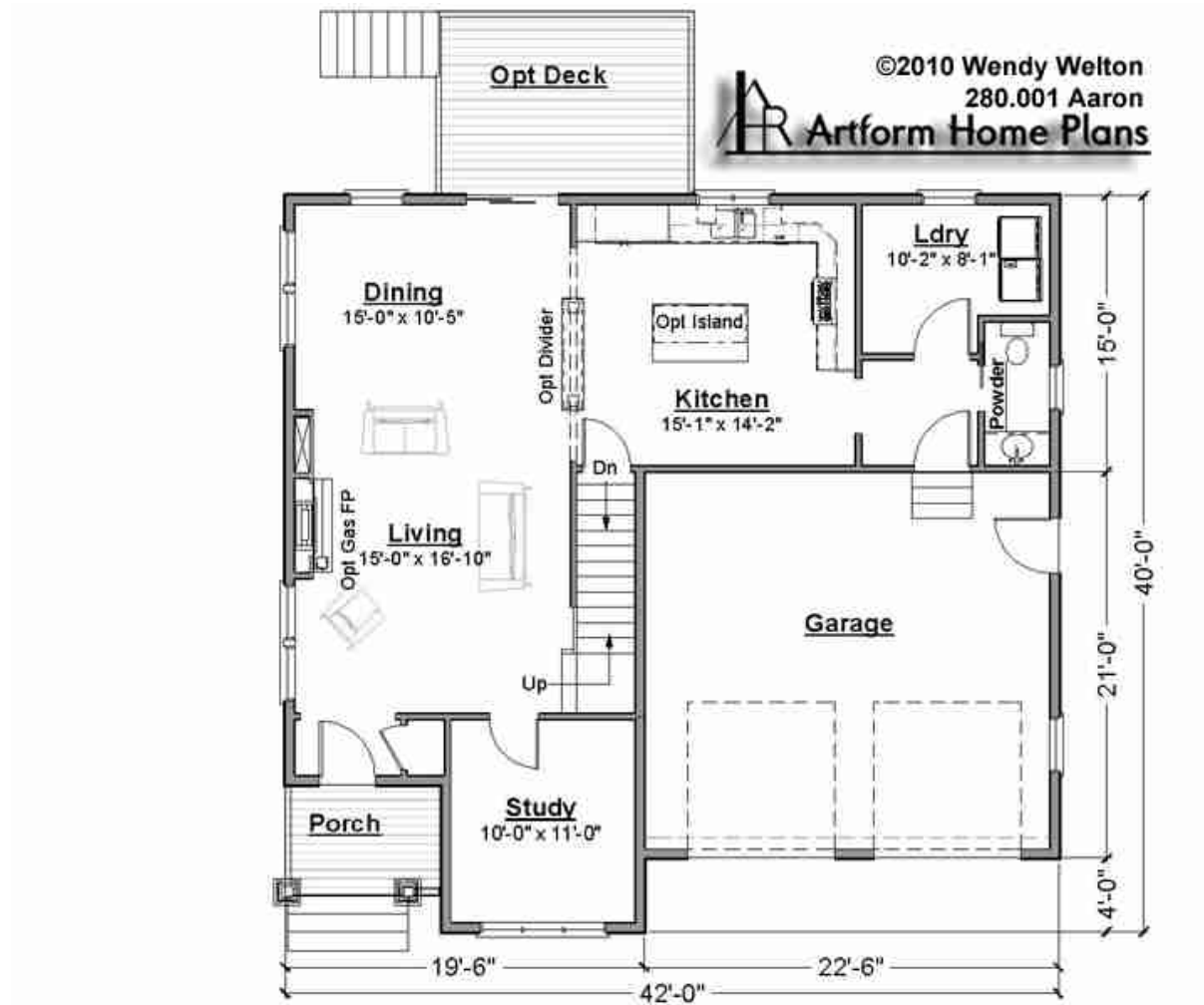
Bedrooms: 1

Bathrooms: 1.0

Ceiling Height Shown: 8'-0"

Ceiling Height Possible*: 8'-8"

* -- Increasing ceiling height requires a Major Change.



Aaron Prime

280.001

© 2013 Art Form Architecture, Inc. All Rights Reserved . <http://www.artformhomeplans.com>

Second Floor

Living Area: 1187 SF

Bedrooms: 3

Bathrooms: 2.0

Ceiling Height Shown: 8'-0"

Ceiling Height Possible*: 8'-0"

* -- Increasing ceiling height requires a Major Change.



Aaron Prime

280.001

© 2013 Art Form Architecture, Inc. All Rights Reserved . <http://www.artformhomeplans.com>

Basement Floor

Living Area: 0 SF

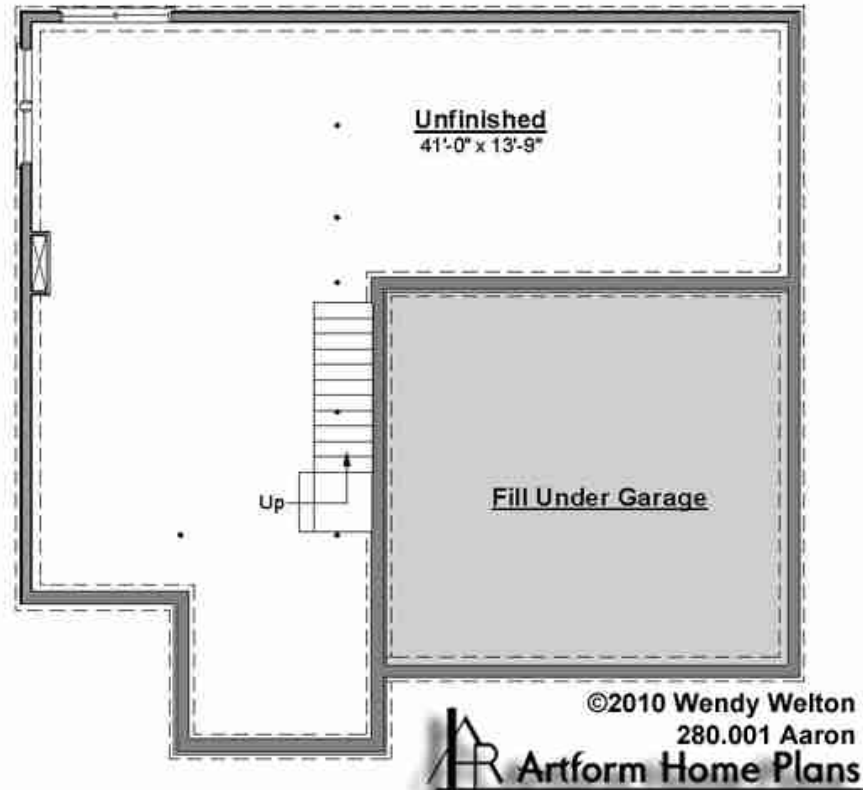
Bedrooms: 0

Bathrooms: 0.0

Ceiling Height Shown: 7'-8"

Ceiling Height Possible*: 9'-0"

* -- Increasing ceiling height requires a Major Change.



Aaron Prime

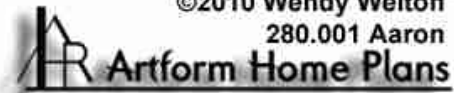
280.001

© 2013 Art Form Architecture, Inc. All Rights Reserved . <http://www.artformhomeplans.com>

Elevations



©2010 Wendy Welton
280.001 Aaron



Aaron Solo

279.001

© 2013 Art Form Architecture, Inc. All Rights Reserved . <http://www.artformhomeplans.com>



Aaron Solo is for the smaller lot, for folks who may be downsizing overall, but still want a nice range of amenities.



	Living Area	Bedrooms	Bathrooms	Ceiling Height Shown	Ceiling Height Possible*
First Floor	896 SF	1	1.0	8'-0"	
Second Floor	937 SF	2	2.0	8'-0"	
Total Above Grade	1833 SF	3	3.0		
Basement	0 SF	0	0.0		

* -- Increasing ceiling height requires a Major Change.

<http://www.artformhomeplans.com/Contact.a5w>

<http://www.artformhomeplans.com/TermsConditions.a5w>

Aaron Solo

279.001

© 2013 Art Form Architecture, Inc. All Rights Reserved . <http://www.artformhomeplans.com>

First Floor

Living Area: 896 SF

Bedrooms: 1

Bathrooms: 1.0

Ceiling Height Shown: 8'-0"

Ceiling Height Possible*:

* -- Increasing ceiling height requires a Major Change.



Aaron Solo

279.001

© 2013 Art Form Architecture, Inc. All Rights Reserved . <http://www.artformhomeplans.com>

Second Floor

Living Area: 937 SF

Bedrooms: 2

Bathrooms: 2.0

Ceiling Height Shown: 8'-0"

Ceiling Height Possible*:

* -- Increasing ceiling height requires a Major Change.



Aaron Solo

279.001

© 2013 Art Form Architecture, Inc. All Rights Reserved . <http://www.artformhomeplans.com>

Basement Floor

Living Area: 0 SF

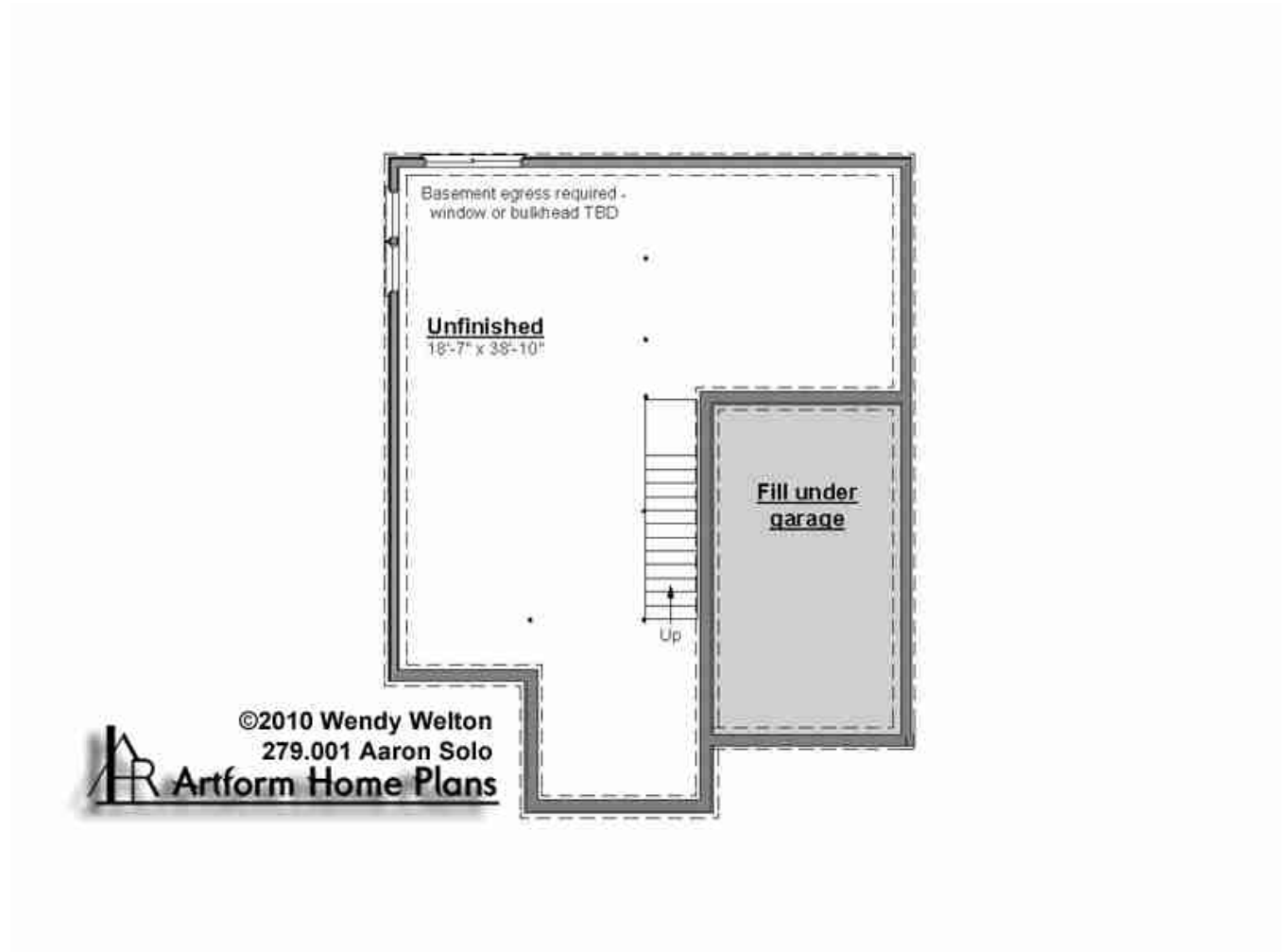
Bedrooms: 0

Bathrooms: 0.0

Ceiling Height Shown: 8'-0"

Ceiling Height Possible*:

* -- Increasing ceiling height requires a Major Change.



Aaron Solo

279.001

© 2013 Art Form Architecture, Inc. All Rights Reserved . <http://www.artformhomeplans.com>

Elevations

 **Artform Home Plans**



All I Need

191.001

© 2013 Art Form Architecture, Inc. All Rights Reserved . <http://www.artformhomeplans.com>



Yes, really - we named this one "All I Need"! It's for the single person who wants to live light, who's needs or budget are little. Maybe your budget is small, maybe simplicity is your life philosophy. All I Need is 100% dimensional lumber, not a stick bigger than 2x10. The rafters are 20 feet. Even the foundation is simple - a wood framed bearing wall and no steel columns. The 10:12 roof is a good pitch for solar panels. Need just a bit more? Check out Seabee, All We Need and the Snug Harbor series.

This group of designs is the start of our Free & Honor program. We're starting with the smallest ones. If you need something bigger, stay tuned or call us up!

	Living Area	Bedrooms	Bathrooms	Ceiling Height Shown	Ceiling Height Possible*
First Floor	874 SF	1	1.5	8'-0"	
Second Floor	481 SF	2	0.0	8'-0"	
Total Above Grade	1355 SF	3	1.5		
Basement	0 SF	0	0.0		

* -- Increasing ceiling height requires a Major Change.

<http://www.artformhomeplans.com/Contact.a5w>

<http://www.artformhomeplans.com/TermsConditions.a5w>

All I Need

191.001

© 2013 Art Form Architecture, Inc. All Rights Reserved . <http://www.artformhomeplans.com>



First Floor

Living Area: 874 SF

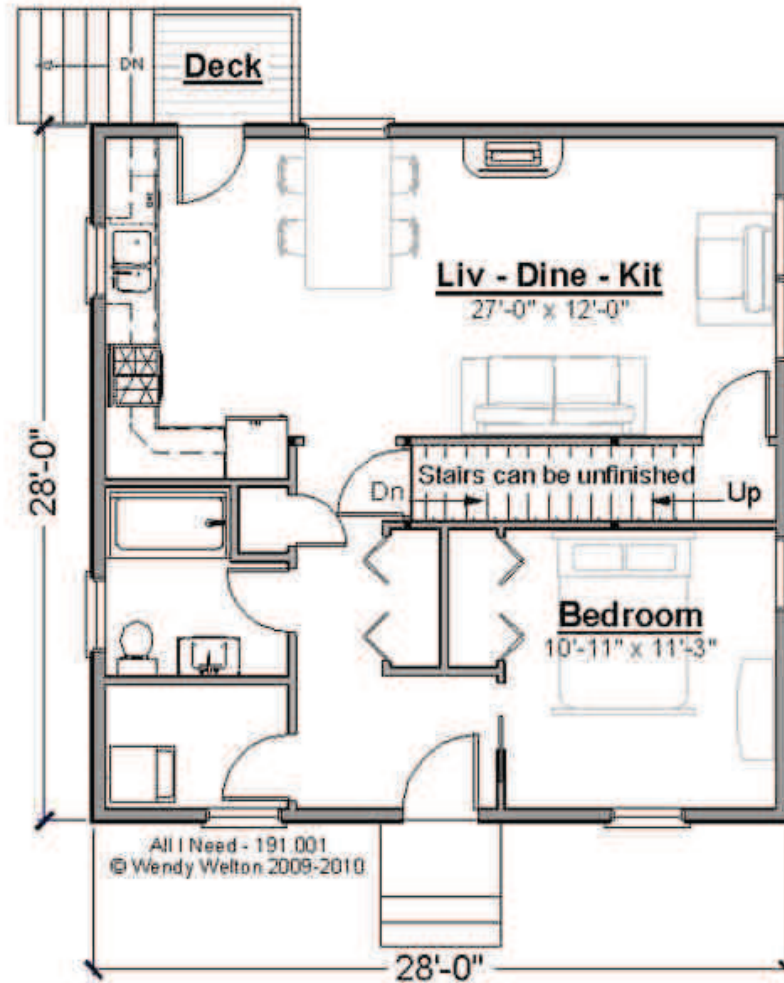
Bedrooms: 1

Bathrooms: 1.5

Ceiling Height Shown: 8'-0"

Ceiling Height Possible*:

* -- Increasing ceiling height requires a Major Change.



All I Need

191.001

© 2013 Art Form Architecture, Inc. All Rights Reserved . <http://www.artformhomeplans.com>

Second Floor

Living Area: 481 SF

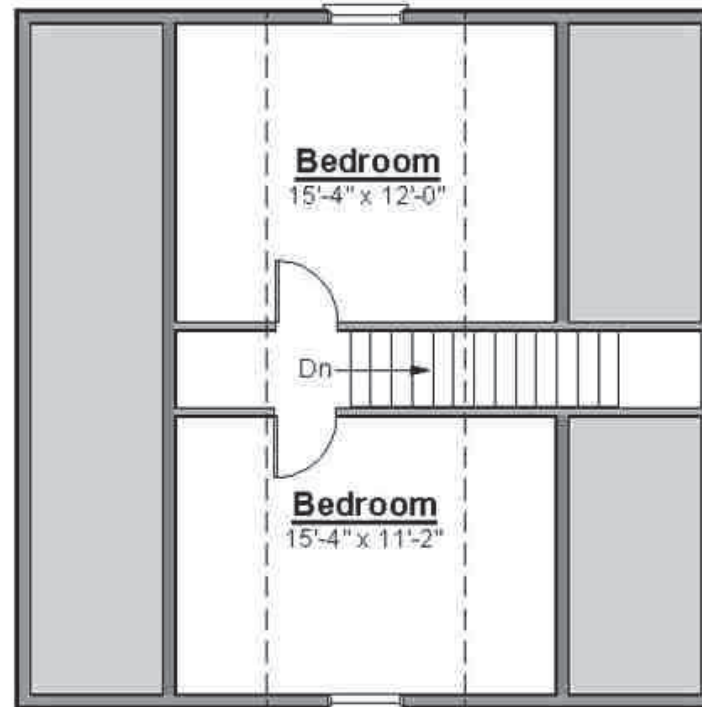
Bedrooms: 2

Bathrooms: 0.0

Ceiling Height Shown: 8'-0"

Ceiling Height Possible*:

* -- Increasing ceiling height requires a Major Change.



All I Need - 191.001
© Wendy Welton 2009-2010

All I Need

191.001

© 2013 Art Form Architecture, Inc. All Rights Reserved . <http://www.artformhomeplans.com>

Basement Floor

Living Area: 0 SF

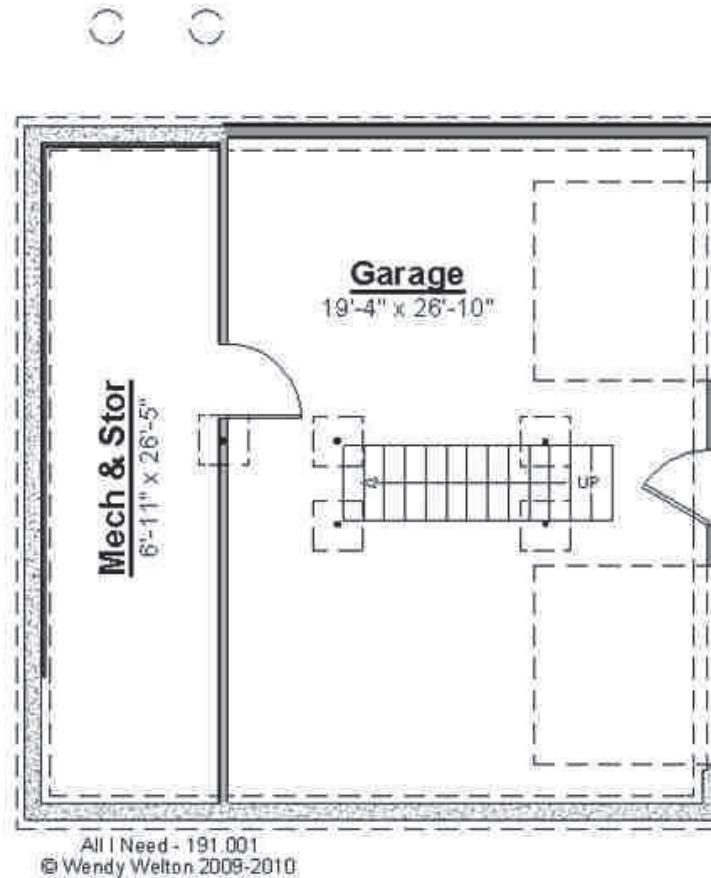
Bedrooms: 0

Bathrooms: 0.0

Ceiling Height Shown: 8'-0"

Ceiling Height Possible*:

* -- Increasing ceiling height requires a Major Change.



All I Need - 191.001
© Wendy Welton 2009-2010

All I Need

191.001

© 2013 Art Form Architecture, Inc. All Rights Reserved . <http://www.artformhomeplans.com>

Elevations



© 2009 Wendy Welton



Aurora

633.124

© 2013 Wendy Welton, all rights reserved . You may not build this design without purchasing a license, even if you make changes. This design may have geographic restrictions.



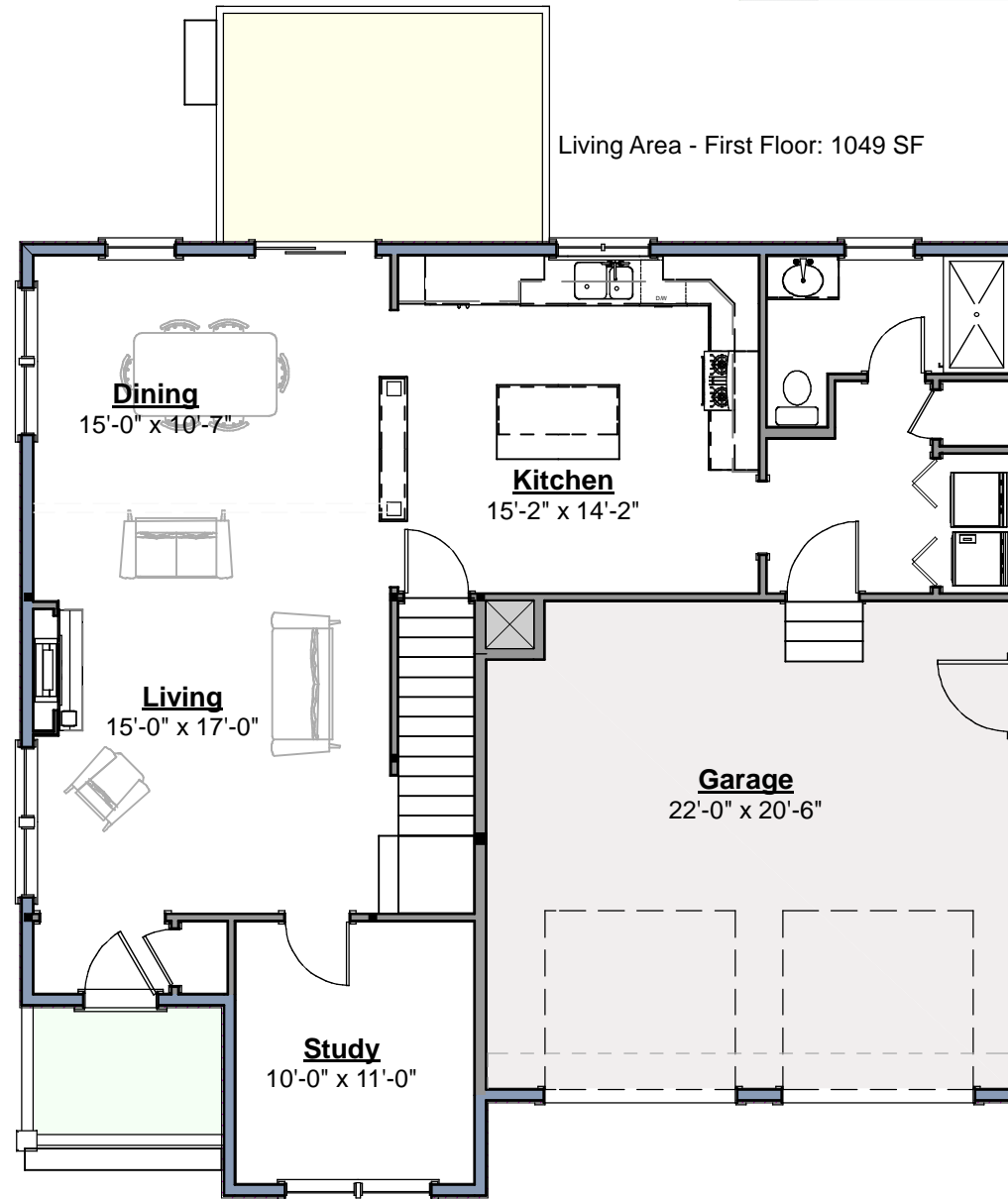
603-431-9559



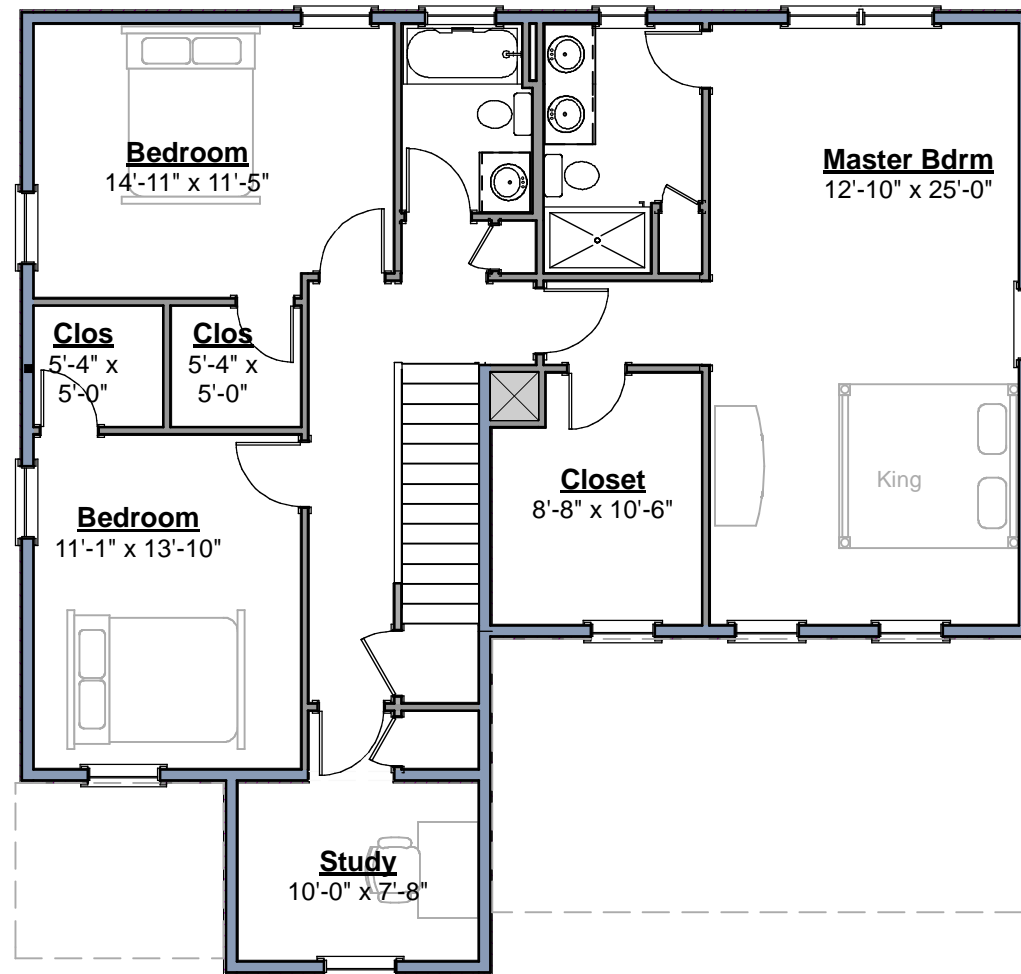
Some items shown are optional and/or may vary. Builder's written specifications always govern.

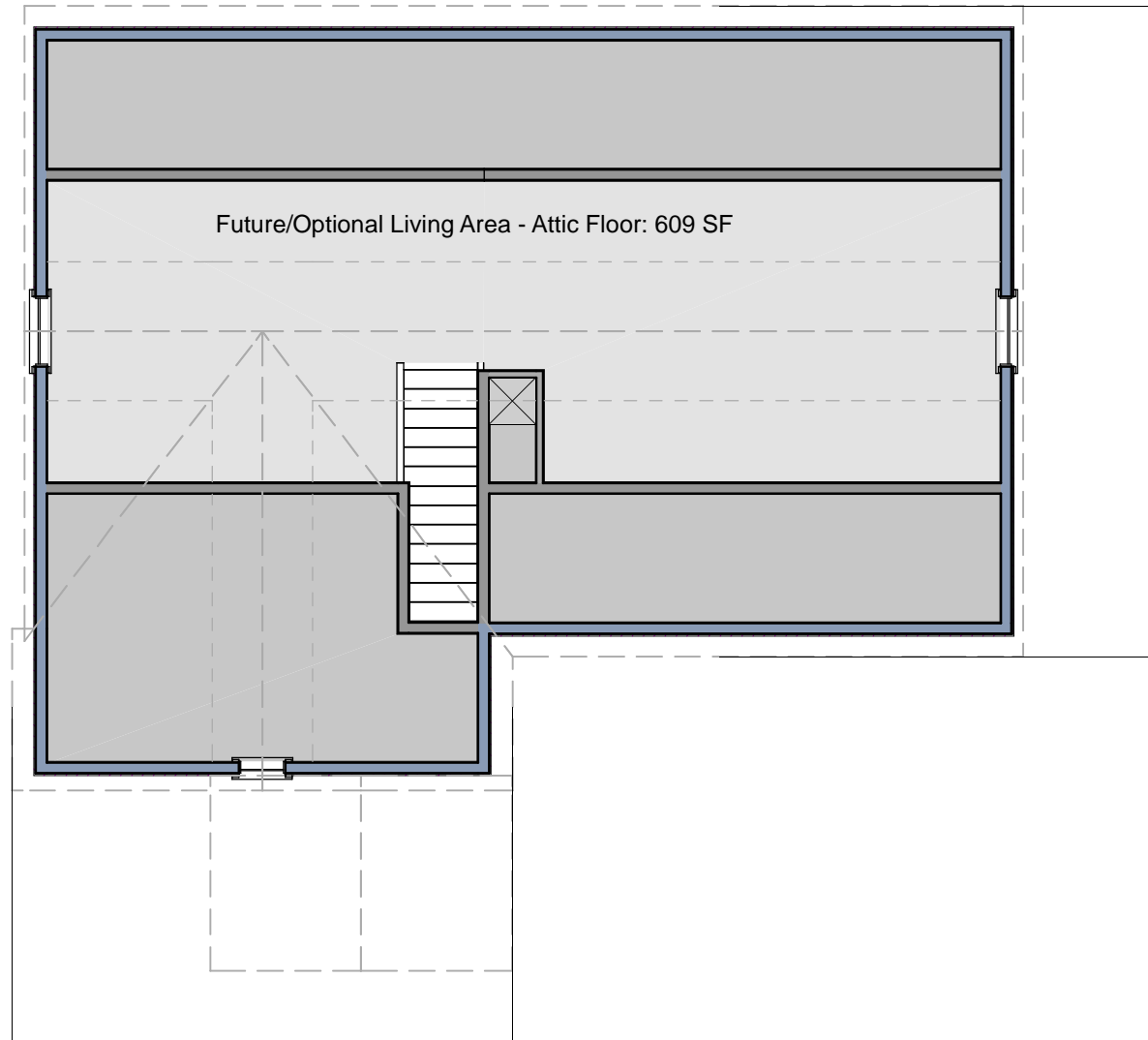
1. Gas fireplace and it's surround or mantel
2. Kitchen - island, cabinet style & trim, countertop material, etc.
3. Door styles and trim
4. Window grilles and trim, window treatments
5. Stair balusters or low walls at stairs
6. Lighting
7. Material selections (flooring, siding, roofing, paint colors, etc.)
8. Other furnishings
9. Landscaping, paving and walkways
10. Gutters, shutters and other exterior trim components
11. Deck size, railing style, stair location, etc.
12. Amount of exposed basement and/or wood framed walls at basement.

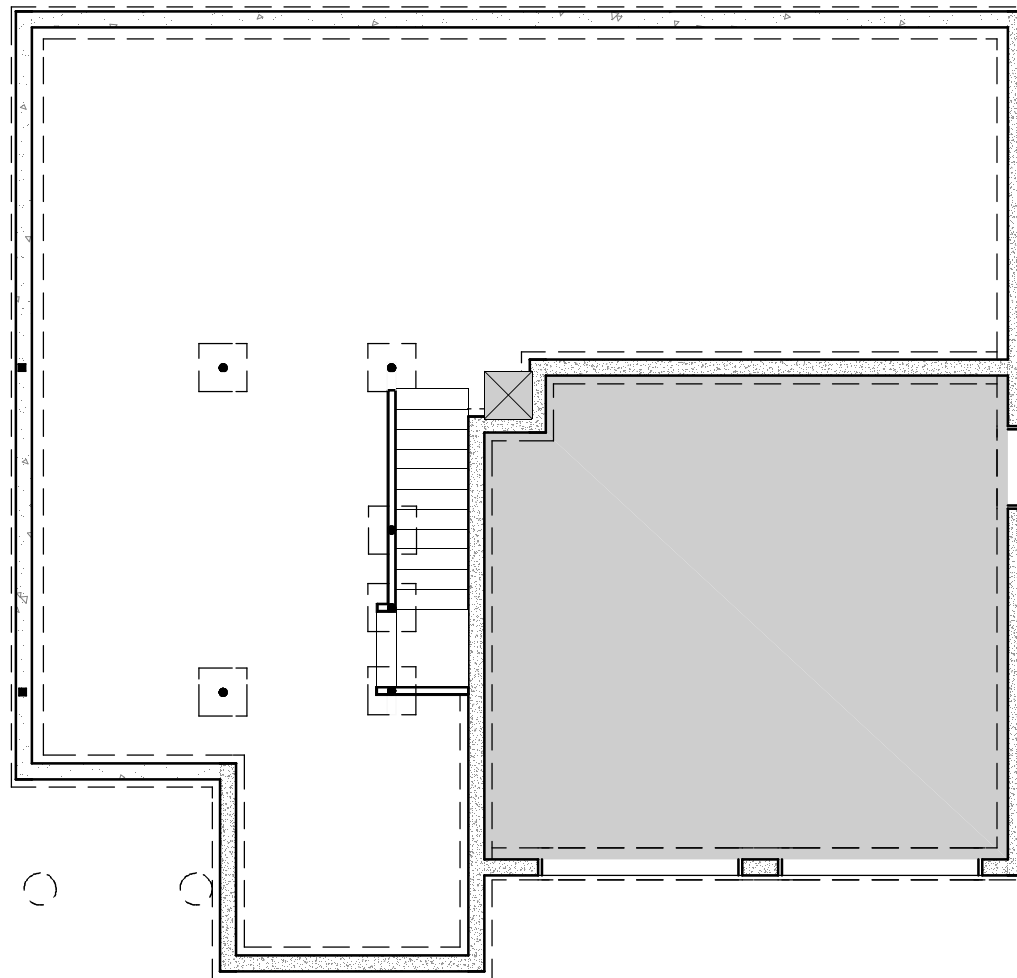
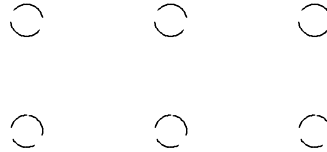
These images are not of any specific building site. Sun and view through windows will vary, as will the site around the house on the exterior and the slope of the land.



Living Area - Second Floor: 1297 SF







12/12/2013

Aurora

633.124

© 2013 Wendy Welton, all rights reserved . You may not build this design without purchasing a license, even if you make changes. This design may have geographic restrictions.

 **Artform Home Plans**
603-431-9559



Door styles may vary. See builder's specs
and / or client's selection

12/12/2013

Aurora

633.124

© 2013 Wendy Welton, all rights reserved . You may not build this design without purchasing a license, even if you make changes. This design may have geographic restrictions.

 **Artform Home Plans**
603-431-9559



12/12/2013

Aurora

633.124

© 2013 Wendy Welton, all rights reserved . You may not build this design without purchasing a license, even if you make changes. This design may have geographic restrictions.

 **Artform Home Plans**
603-431-9559



12/12/2013

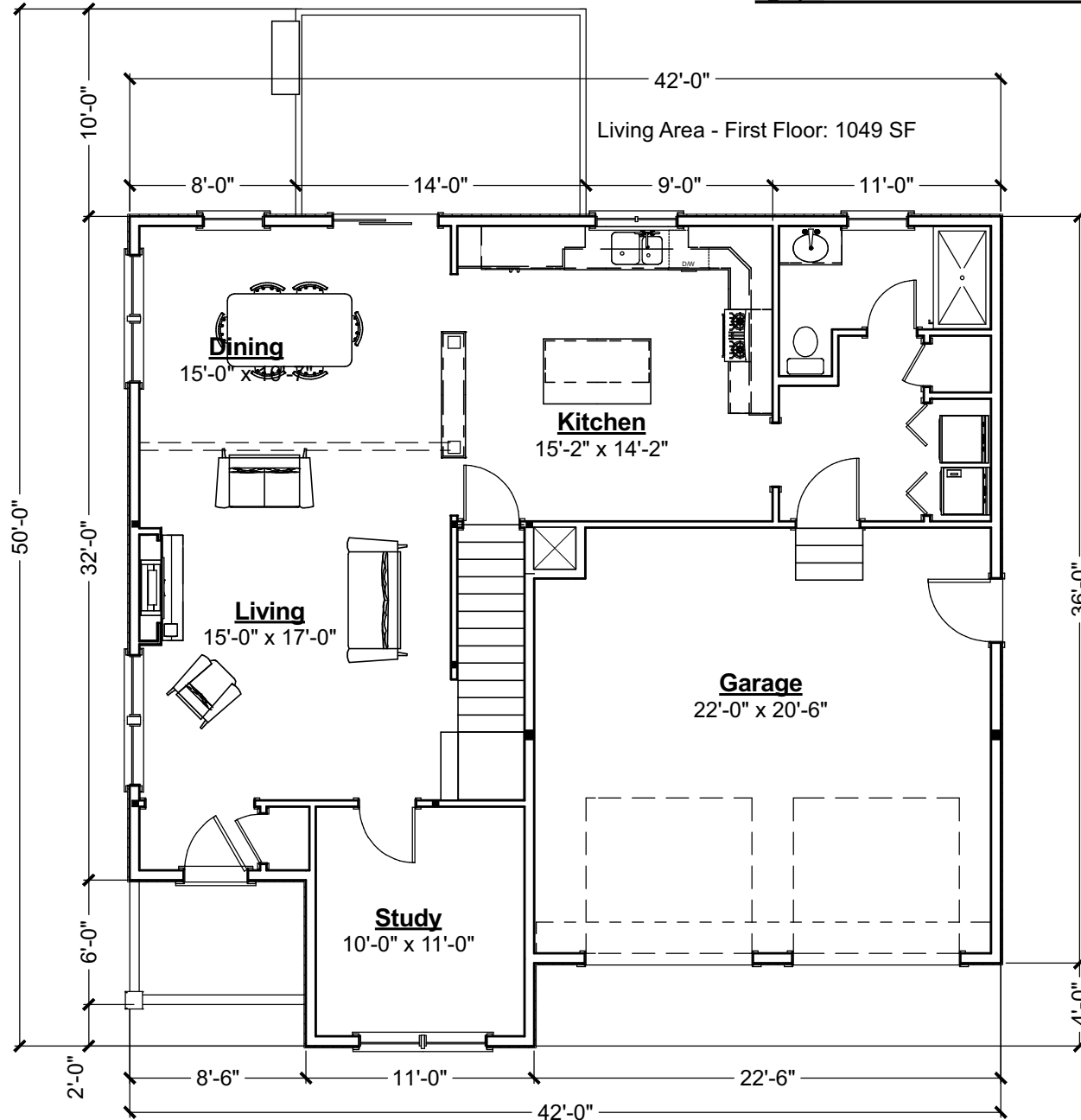
Aurora

633.124

© 2013 Wendy Welton, all rights reserved . You may not build this design without purchasing a license, even if you make changes. This design may have geographic restrictions.

 **Artform Home Plans**
603-431-9559





12/18/2013

Nora Abby

255.120.v1

© 2013 Wendy Welton, all rights reserved . You may not build this design without purchasing a license, even if you make changes. This design may have geographic restrictions.



603-431-9559



Some items shown are optional and/or may vary. Builder's written specifications always govern.

1. Gas fireplace and it's surround or mantel
2. Kitchen - island, cabinet style & trim, countertop material, etc.
3. Door styles and trim
4. Window grilles and trim, window treatments
5. Stair balusters or low walls at stairs
6. Lighting
7. Material selections (flooring, siding, roofing, paint colors, etc.)
8. Other furnishings
9. Landscaping, paving and walkways
10. Gutters, shutters and other exterior trim components
11. Deck size, railing style, stair location, etc.
12. Amount of exposed basement and/or wood framed walls at basement.

These images are not of any specific building site. Sun and view through windows will vary, as will the site around the house on the exterior and the slope of the land.

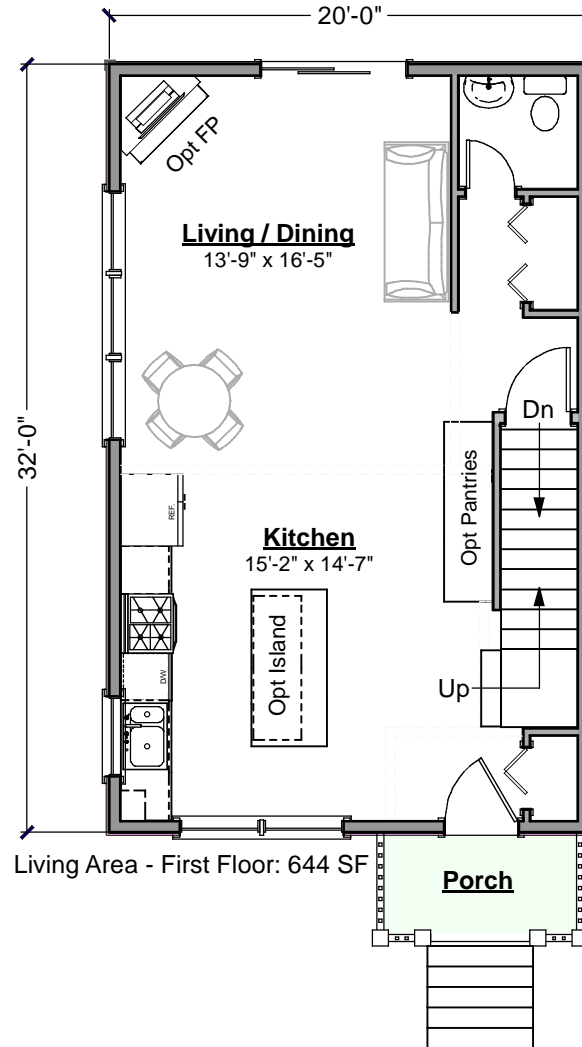
12/18/2013

Nora Abby

255.120.v1

© 2013 Wendy Welton, all rights reserved . You may not build this design without purchasing a license, even if you make changes. This design may have geographic restrictions.

Artform Home Plans
603-431-9559



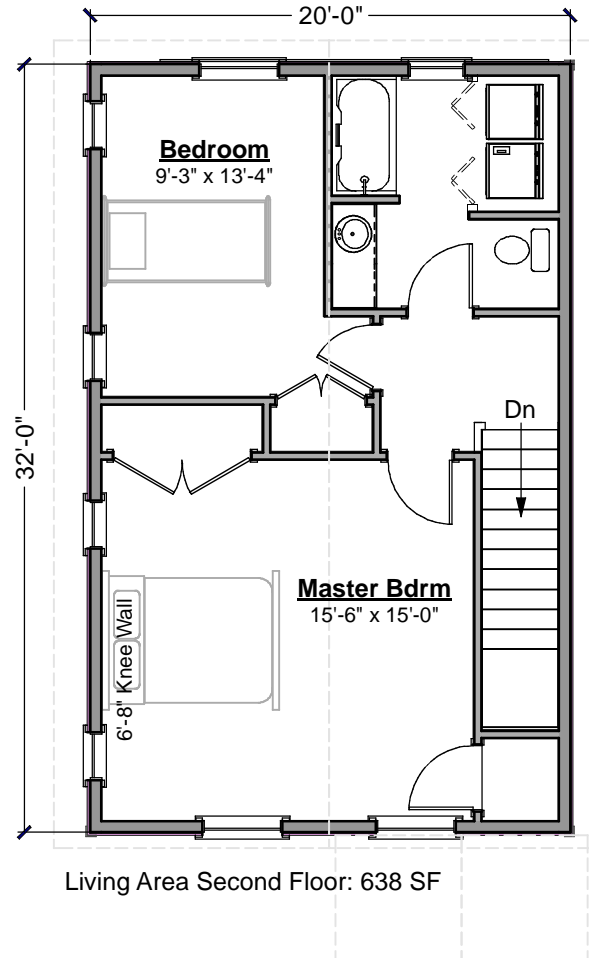
12/18/2013

Nora Abby

255.120.v1

© 2013 Wendy Welton, all rights reserved . You may not build this design without purchasing a license, even if you make changes. This design may have geographic restrictions.

 **Artform Home Plans**
603-431-9559



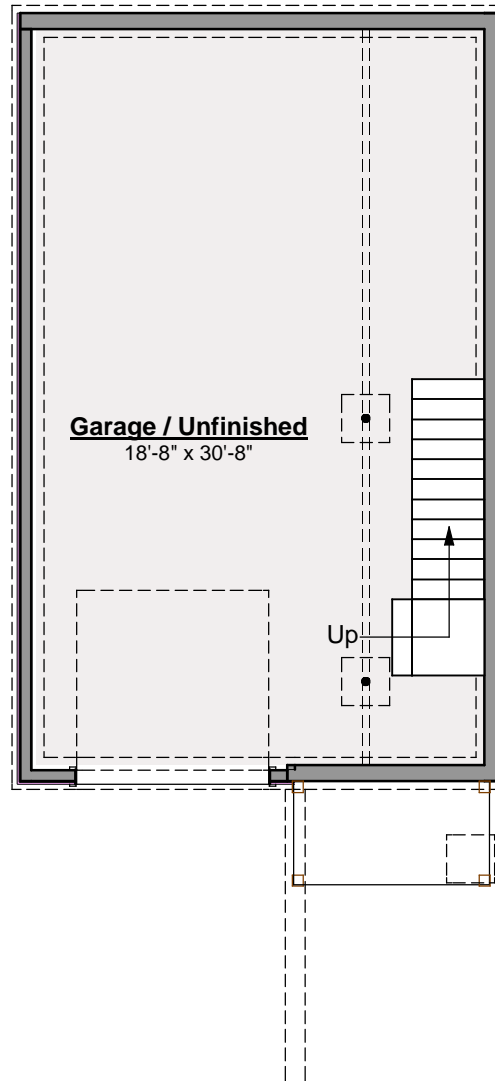
12/18/2013

Nora Abby

255.120.v1

© 2013 Wendy Welton, all rights reserved . You may not build this design without purchasing a license, even if you make changes. This design may have geographic restrictions.

 **Artform Home Plans**
603-431-9559



12/18/2013

Nora Abby

255.120.v1

© 2013 Wendy Welton, all rights reserved . You may not build this design without purchasing a license, even if you make changes. This design may have geographic restrictions.

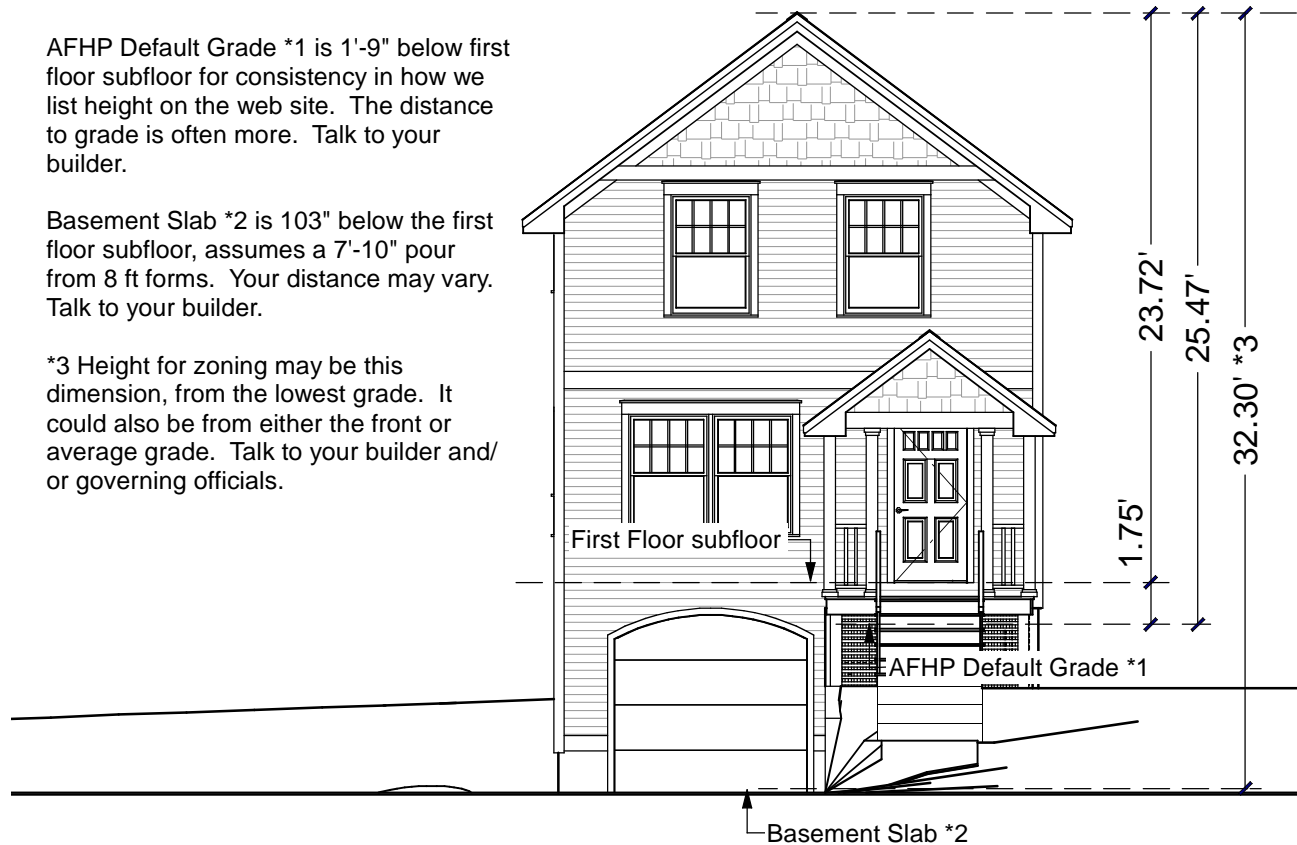
Artform Home Plans

603-431-9559

AFHP Default Grade *1 is 1'-9" below first floor subfloor for consistency in how we list height on the web site. The distance to grade is often more. Talk to your builder.

Basement Slab *2 is 103" below the first floor subfloor, assumes a 7'-10" pour from 8 ft forms. Your distance may vary. Talk to your builder.

*3 Height for zoning may be this dimension, from the lowest grade. It could also be from either the front or average grade. Talk to your builder and/or governing officials.



Strawberry Shortcake

569.124

© 2013 Wendy Welton, all rights reserved . You may not build this design without purchasing a license, even if you make changes. This design may have geographic restrictions.



603-431-9559



Some items shown are optional and/or may vary. Builder's written specifications always govern.

1. Gas fireplace and it's surround or mantel
2. Kitchen - island, cabinet style & trim, countertop material, etc.
3. Door styles and trim
4. Window grilles and trim, window treatments
5. Stair balusters or low walls at stairs
6. Lighting
7. Material selections (flooring, siding, roofing, paint colors, etc.)
8. Other furnishings
9. Landscaping, paving and walkways
10. Gutters, shutters and other exterior trim components
11. Deck size, railing style, stair location, etc.
12. Amount of exposed basement and/or wood framed walls at basement.

These images are not of any specific building site. Sun and view through windows will vary, as will the site around the house on the exterior and the slope of the land.

12/18/2013

Strawberry Shortcake

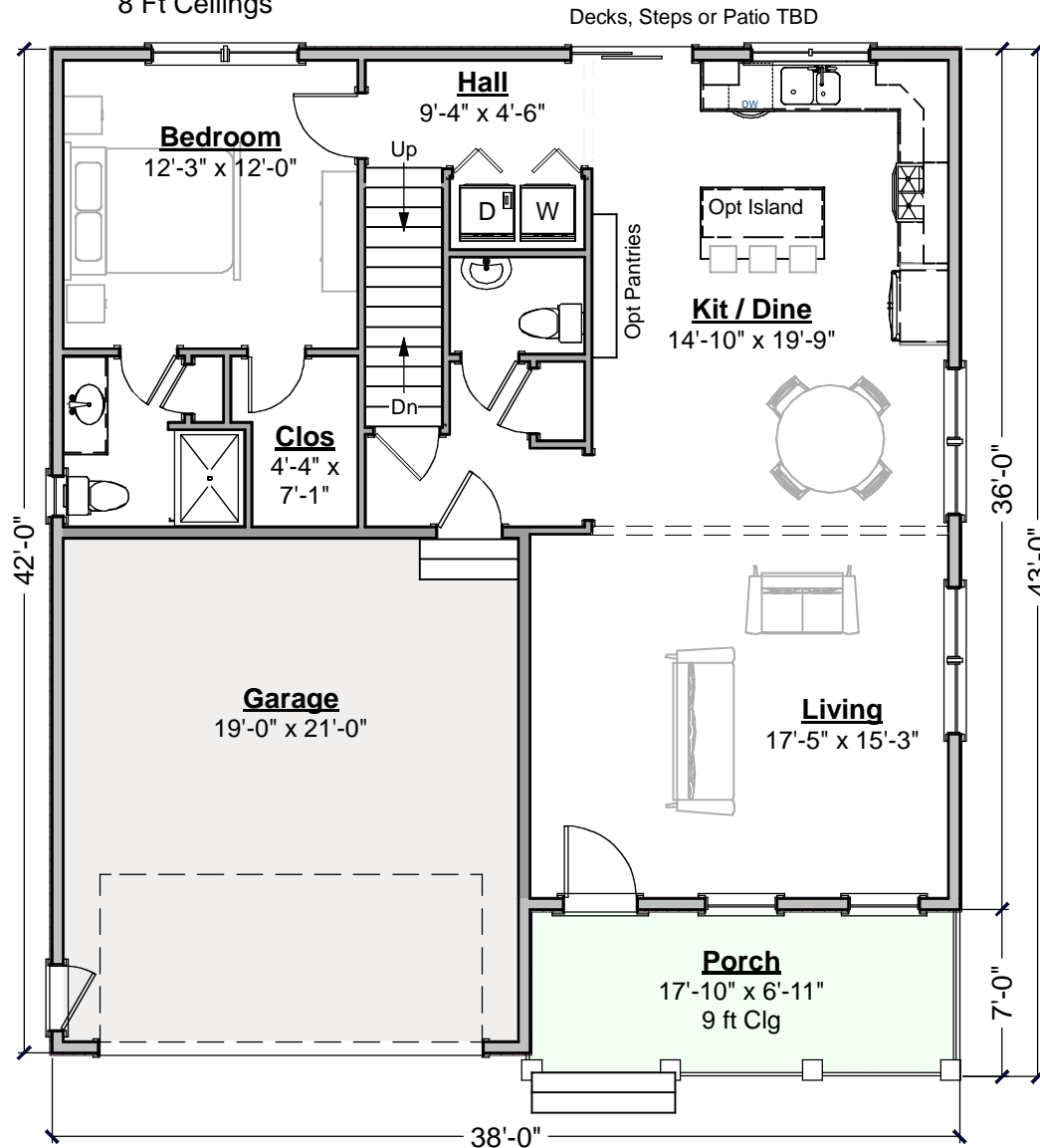
569.124

© 2013 Wendy Welton, all rights reserved . You may not build this design without purchasing a license, even if you make changes. This design may have geographic restrictions.

Artform Home Plans

603-431-9559

This Floor:
1064 sf Living Area
8 Ft Ceilings



12/18/2013

Strawberry Shortcake

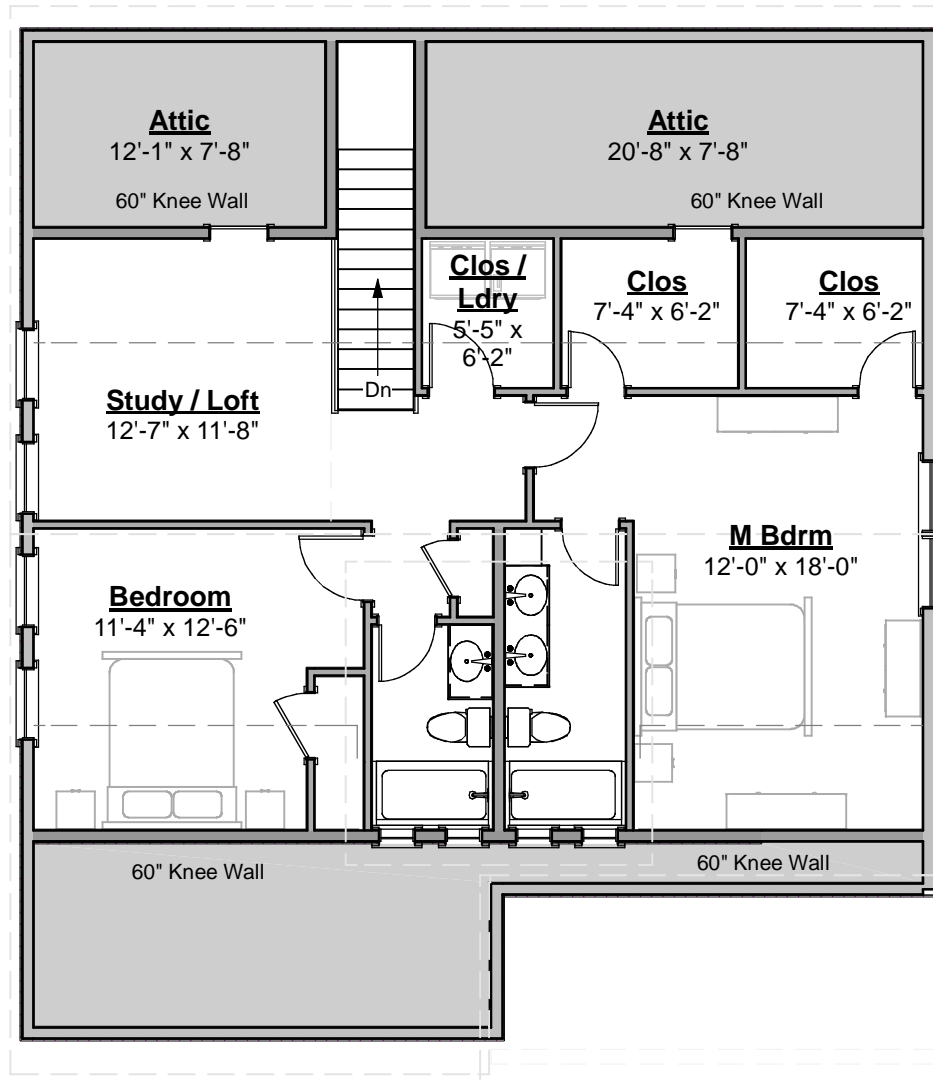
569.124

© 2013 Wendy Welton, all rights reserved . You may not build this design without purchasing a license, even if you make changes. This design may have geographic restrictions.

Artform Home Plans

603-431-9559

This Floor:
972 sf Living Area
8 Ft Ceilings



12/18/2013

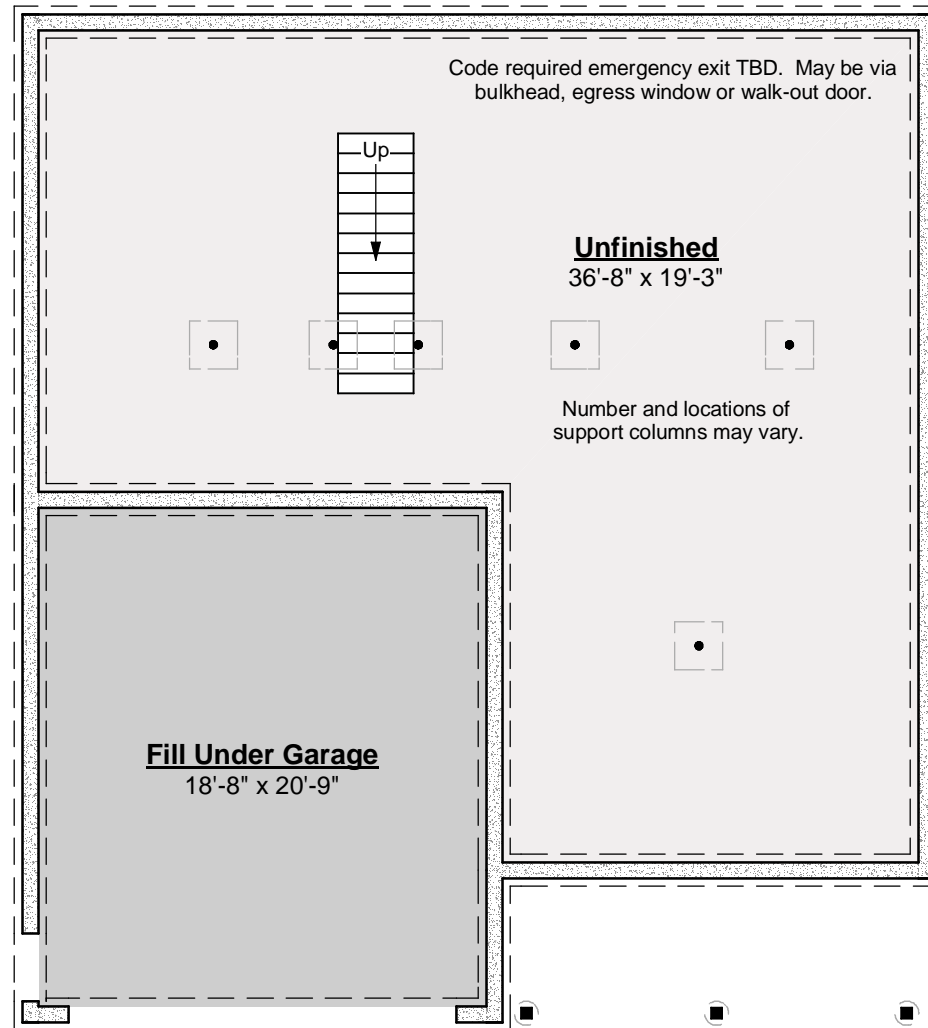
Strawberry Shortcake

569.124

© 2013 Wendy Welton, all rights reserved . You may not build this design without purchasing a license, even if you make changes. This design may have geographic restrictions.



603-431-9559



12/18/2013

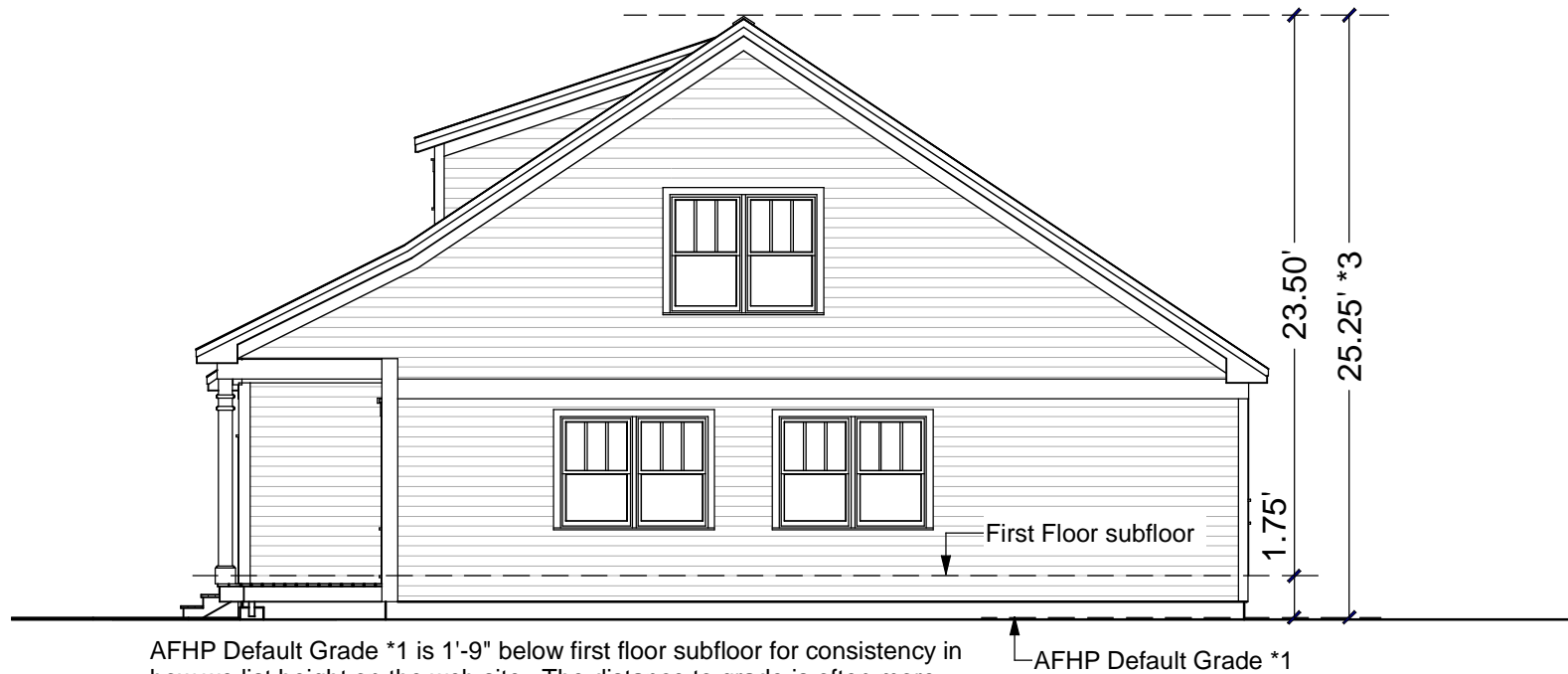
Strawberry Shortcake

569.124

© 2013 Wendy Welton, all rights reserved . You may not build this design without purchasing a license, even if you make changes. This design may have geographic restrictions.

Artform Home Plans

603-431-9559



AFHP Default Grade *1 is 1'-9" below first floor subfloor for consistency in how we list height on the web site. The distance to grade is often more. Talk to your builder.

AFHP Default Grade *1

*3 Height for zoning may be measured from the grade at the front, the lowest grade or an average. Talk to your builder and/or governing officials.

Foxglove Cottage

050.001

© 2013 Art Form Architecture, Inc. All Rights Reserved . <http://www.artformhomeplans.com>



Foxglove is an interesting floorplan, tucking the stairs in the front so the living areas all relate strongly to the rear. It's been built with a basement extension to make room for a second car bay.



	Living Area	Bedrooms	Bathrooms	Ceiling Height Shown	Ceiling Height Possible*
First Floor	694 SF	0	0.5	8'-0"	8'-0"
Second Floor	708 SF	3	2.0	8'-0"	8'-0"
Total Above Grade	1402 SF	3	2.5		

* -- Increasing ceiling height requires a Major Change.

<http://www.artformhomeplans.com/Contact.a5w>

<http://www.artformhomeplans.com/TermsConditions.a5w>

Foxglove Cottage

050.001

© 2013 Art Form Architecture, Inc. All Rights Reserved . <http://www.artformhomeplans.com>



First Floor

Living Area: 694 SF

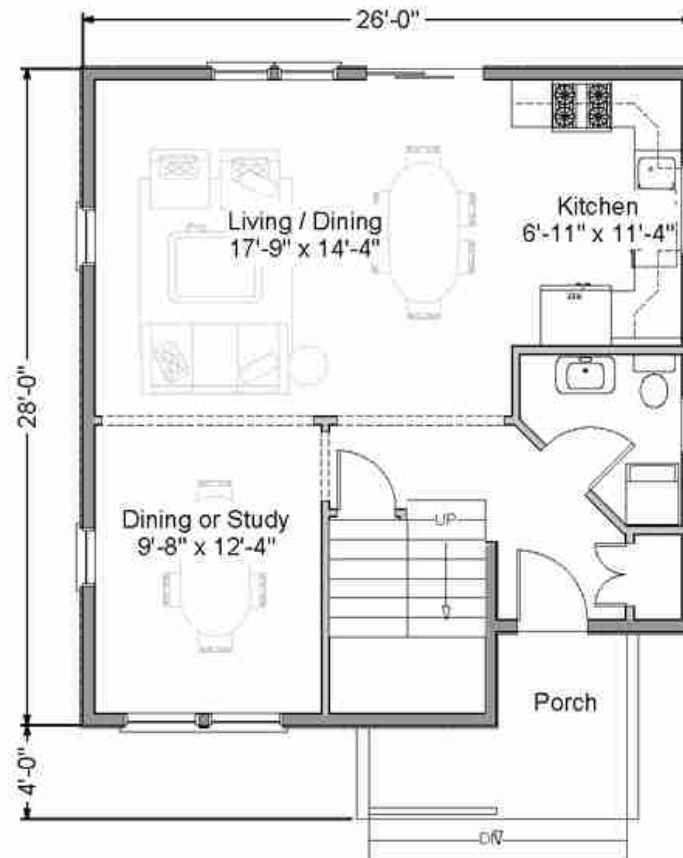
Bedrooms: 0

Bathrooms: 0.5

Ceiling Height Shown: 8'-0"

Ceiling Height Possible*: 8'-0"

* -- Increasing ceiling height requires a Major Change.



050 - Foxglove Cottage - First Floor

© 2008 Wendy Lee Welton

Foxglove Cottage

050.001

© 2013 Art Form Architecture, Inc. All Rights Reserved . <http://www.artformhomeplans.com>

Second Floor

Living Area: 708 SF

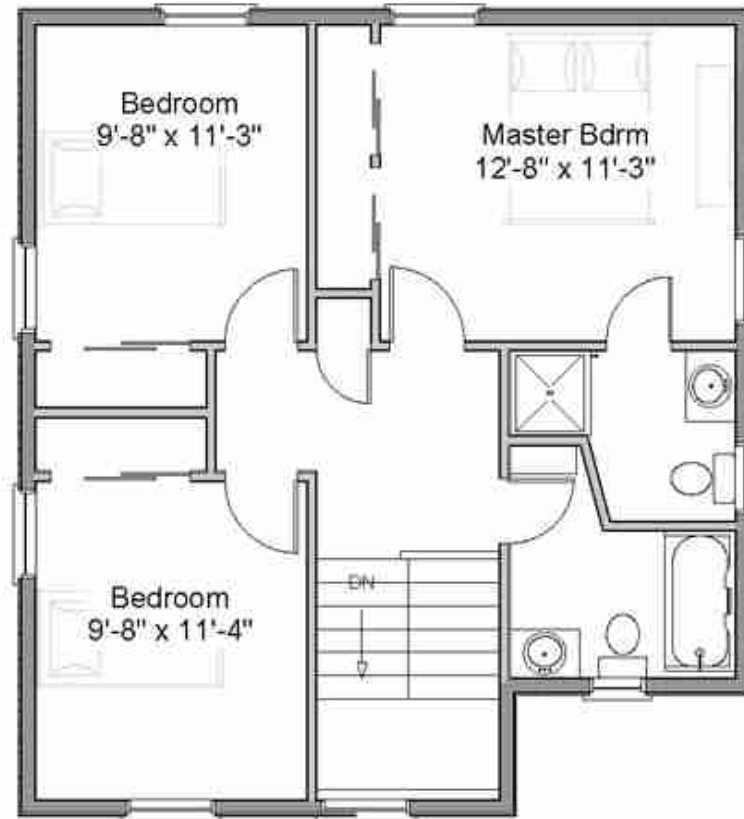
Bedrooms: 3

Bathrooms: 2.0

Ceiling Height Shown: 8'-0"

Ceiling Height Possible*: 8'-0"

* -- Increasing ceiling height requires a Major Change.



050 - Foxglove Cottage - Second Floor

© 2008 Wendy Lee Welton

Gairloch

538.126

© 2013 Art Form Architecture, Inc. All Rights Reserved . <http://www.artformhomeplans.com>



Gairloch was designed for the narrower lot in a new community with very tight lot coverage and a high water table. Due to the high water table, it's shown here as slab-on-grade. A full foundation can be provided as an upgrade. The arch over the entry can also be extended to fully cover the landing, with slightly larger brackets, or even development as a porch.

	Living Area	Bedrooms	Bathrooms	Ceiling Height Shown	Ceiling Height Possible*
First Floor	1208 SF	1	1.5	9'-0"	8'-0"
Second Floor	792 SF	2	1.0	8'-0"	8'-0"
Total Above Grade	2000 SF	3	2.5		

* -- Increasing ceiling height requires a Major Change.

<http://www.artformhomeplans.com/Contact.a5w>

<http://www.artformhomeplans.com/TermsConditions.a5w>

Gairloch

538.126

© 2013 Art Form Architecture, Inc. All Rights Reserved . <http://www.artformhomeplans.com>

First Floor

Living Area: 1208 SF

Bedrooms: 1

Bathrooms: 1.5

Ceiling Height Shown: 9'-0"

Ceiling Height Possible*: 8'-0"

* -- Increasing ceiling height requires a Major Change.

This plan is slab-on-grade standard. A full foundation is available as an upgrade. With a full basement the mechanical room moves to the basement, the laundry moves to where we now show the mechanical equipment, and the door shown here to the stacked laundry now goes to the basement stairs. If you don't need the exterior storage, the back can be squared off for a larger master.



Gairloch

538.126

© 2013 Art Form Architecture, Inc. All Rights Reserved . <http://www.artformhomeplans.com>

Second Floor

Living Area: 792 SF

Bedrooms: 2

Bathrooms: 1.0

Ceiling Height Shown: 8'-0"

Ceiling Height Possible*: 8'-0"

* -- Increasing ceiling height requires a Major Change.

The Study / Loft can be enclosed as an additional Bedroom. The hall Closet cannot be converted to an additional bath, due to building code height requirements.



Gairloch

538.126

© 2013 Art Form Architecture, Inc. All Rights Reserved . <http://www.artformhomeplans.com>

Without stone

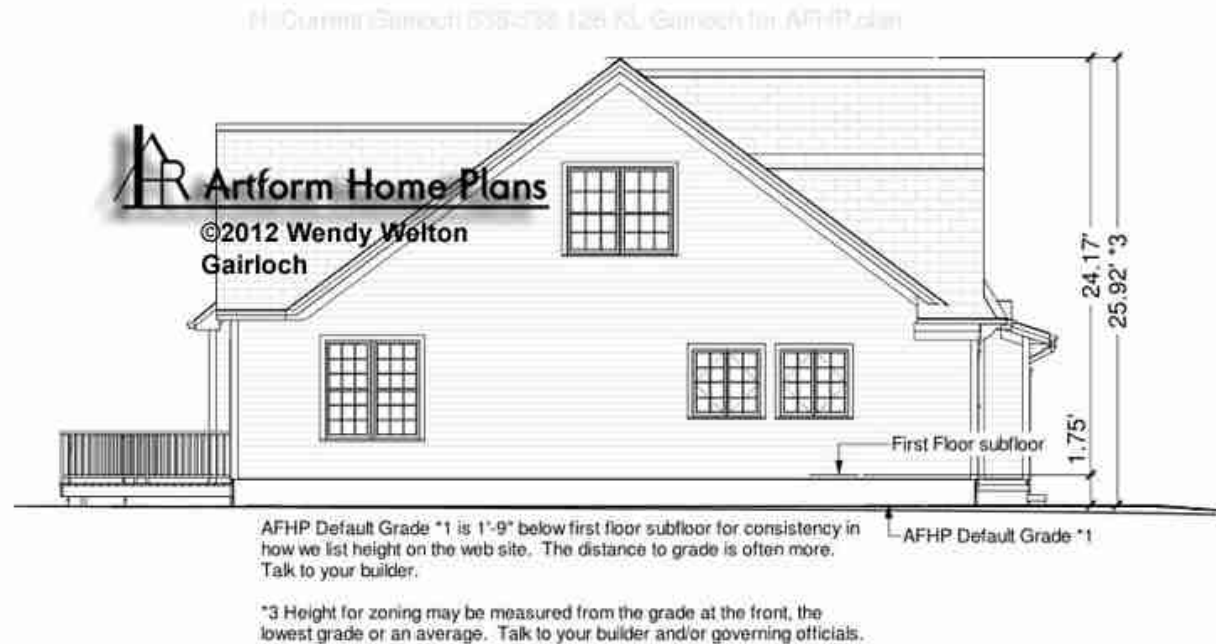


Gairloch

538.126

© 2013 Art Form Architecture, Inc. All Rights Reserved . <http://www.artformhomeplans.com>

Left Elevation / Heights



Gairloch

538.126

© 2013 Art Form Architecture, Inc. All Rights Reserved . <http://www.artformhomeplans.com>

Front Elevation

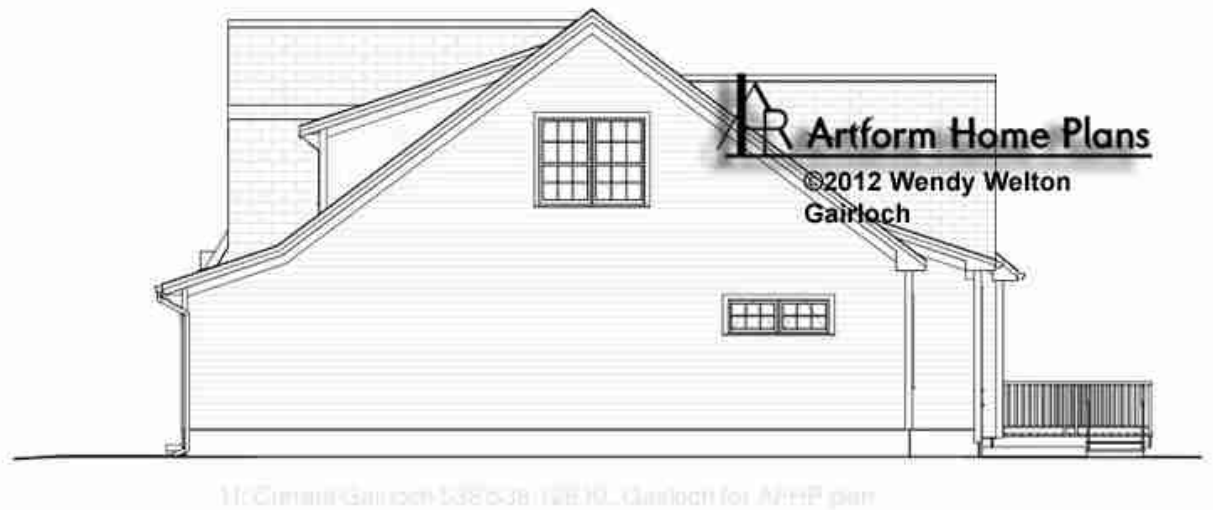


Gairloch

538.126

© 2013 Art Form Architecture, Inc. All Rights Reserved . <http://www.artformhomeplans.com>

Right Elevation



Gairloch

538.126

© 2013 Art Form Architecture, Inc. All Rights Reserved . <http://www.artformhomeplans.com>

Rear Elevation



Pesto Cottage

182.001

© 2013 Art Form Architecture, Inc. All Rights Reserved . <http://www.artformhomeplans.com>



Pesto Cottage is small but scrumptious. If you keep saying "all I need is...", this might just be for you. If your tastes are modest and your budget also, this design will get you started and is all set up to take an addition when you need or can afford it.

	Living Area	Bedrooms	Bathrooms	Ceiling Height Shown	Ceiling Height Possible*
First Floor	676 SF	0	0.5	8'-0"	
Second Floor	643 SF	2	1.0	8'-0"	
Total Above Grade	1319 SF	2	1.5		
Basement	0 SF	0	0.0		

* -- Increasing ceiling height requires a Major Change.

<http://www.artformhomeplans.com/Contact.a5w>

<http://www.artformhomeplans.com/TermsConditions.a5w>

Pesto Cottage

182.001

© 2013 Art Form Architecture, Inc. All Rights Reserved . <http://www.artformhomeplans.com>

First Floor

Living Area: 676 SF

Bedrooms: 0

Bathrooms: 0.5

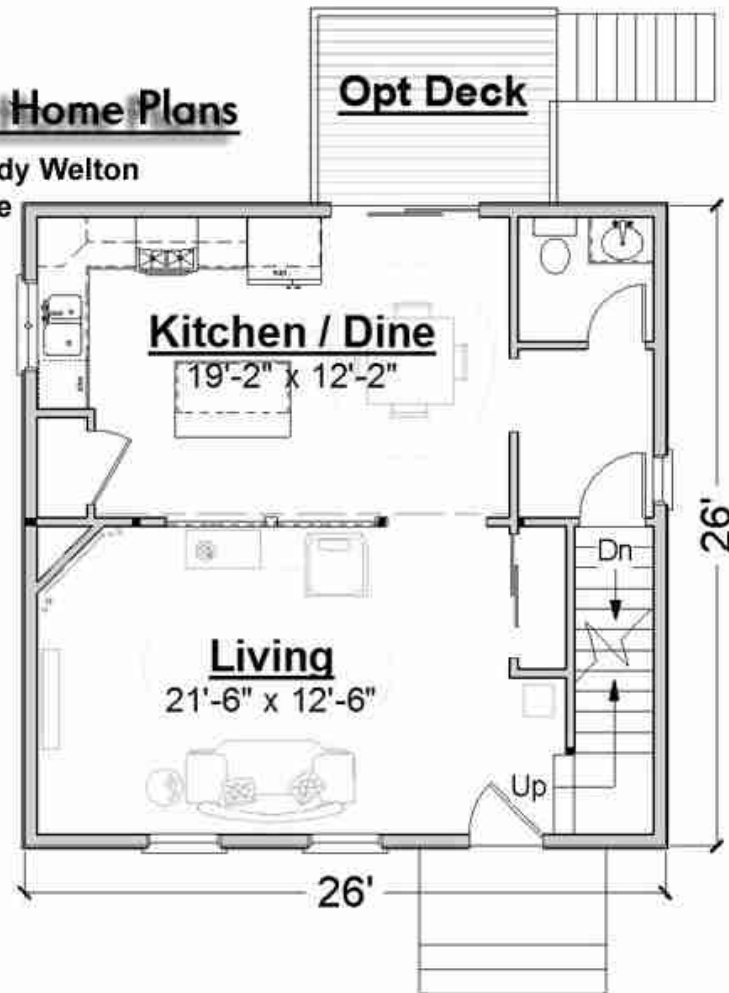
Ceiling Height Shown: 8'-0"

Ceiling Height Possible*:

* -- Increasing ceiling height requires a Major Change.



© 2009-2011 Wendy Welton
182 Pesto Cottage



Pesto Cottage

182.001

© 2013 Art Form Architecture, Inc. All Rights Reserved . <http://www.artformhomeplans.com>

Second Floor

Living Area: 643 SF

Bedrooms: 2

Bathrooms: 1.0

Ceiling Height Shown: 8'-0"

Ceiling Height Possible*:

* -- Increasing ceiling height requires a Major Change.



© 2009-2011 Wendy Welton
182 Pesto Cottage



Pesto Cottage

182.001

© 2013 Art Form Architecture, Inc. All Rights Reserved . <http://www.artformhomeplans.com>

Basement Floor

Living Area: 0 SF

Bedrooms: 0

Bathrooms: 0.0

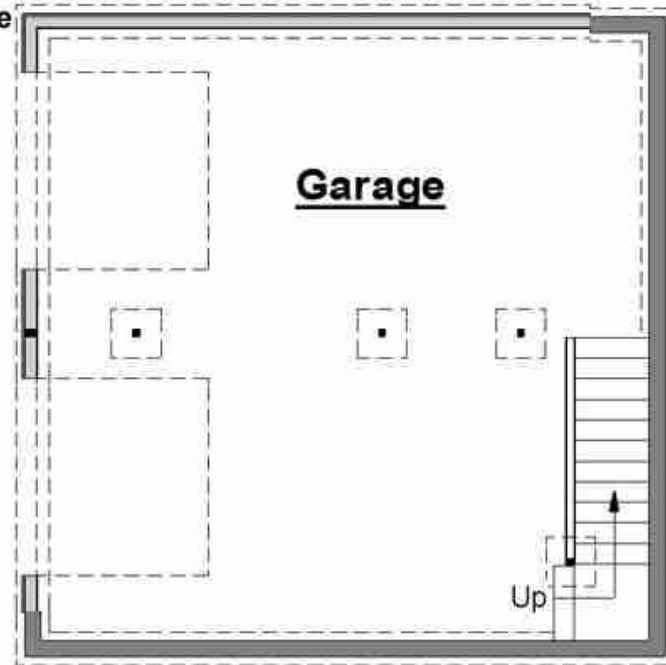
Ceiling Height Shown: 8'-0"

Ceiling Height Possible*:

* -- Increasing ceiling height requires a Major Change.



© 2009-2011 Wendy Welton
182 Pesto Cottage

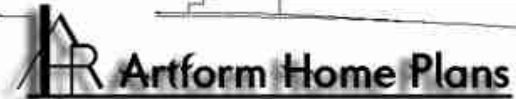


Pesto Cottage

182.001

© 2013 Art Form Architecture, Inc. All Rights Reserved . <http://www.artformhomeplans.com>

Elevations



© 2009-2011 Wendy Welton
182 Pesto Cottage



Raspberry Biscotti

564.144

© 2013 Art Form Architecture, Inc. All Rights Reserved . <http://www.artformhomeplans.com>



The Biscotti floor plan is a Ranch for a narrow lot. Notice that the master suite is well separated from the other two bedrooms.

See more plans in the [Berry Charming Ranches](#) Collection.

	Living Area	Bedrooms	Bathrooms	Ceiling Height Shown	Ceiling Height Possible*
First Floor	1604 SF	3	2.5	8'-0"	9'-0"
Total Above Grade	1604 SF	3	2.5		
Basement	0 SF	0	0.0		

* -- Increasing ceiling height requires a Major Change.

<http://www.artformhomeplans.com/Contact.a5w>

<http://www.artformhomeplans.com/TermsConditions.a5w>

Raspberry Biscotti

564.144

© 2013 Art Form Architecture, Inc. All Rights Reserved . <http://www.artformhomeplans.com>

First Floor

Living Area: 1604 SF

Bedrooms: 3

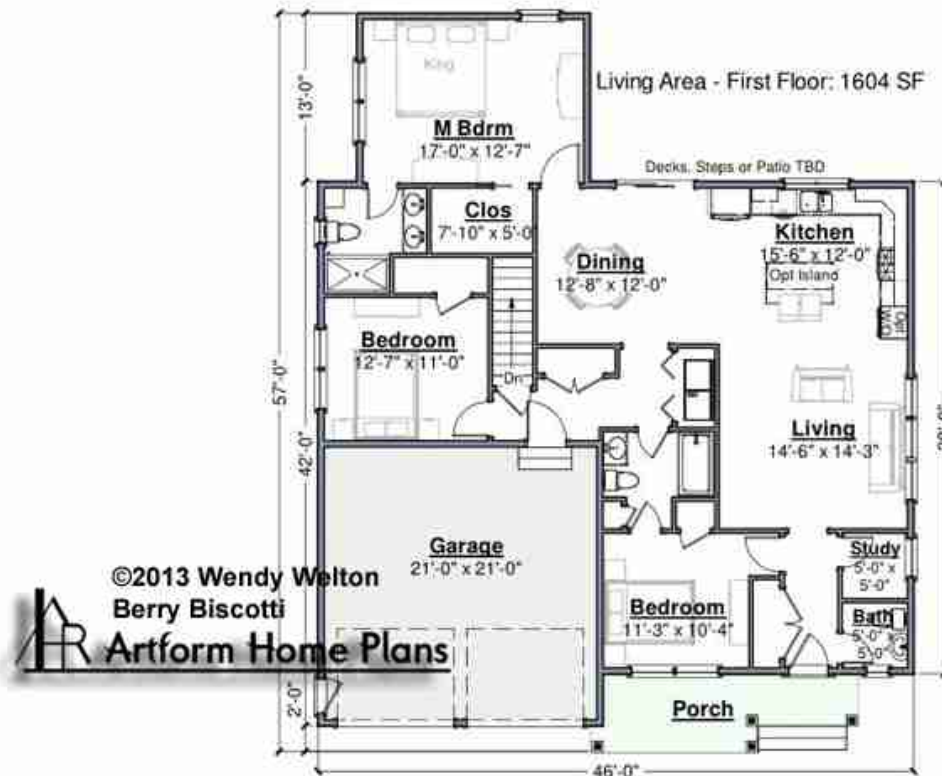
Bathrooms: 2.5

Ceiling Height Shown: 8'-0"

Ceiling Height Possible*: 9'-0"

* -- Increasing ceiling height requires a Major Change.

The master bedroom wing in the rear can be expanded as much as your lot and budget allow. This plan also expands to the right if you have room on your lot.



Raspberry Biscotti

564.144

© 2013 Art Form Architecture, Inc. All Rights Reserved . <http://www.artformhomeplans.com>

Basement Floor

Living Area: 0 SF

Bedrooms: 0

Bathrooms: 0.0

Ceiling Height Shown: 7'-8"

Ceiling Height Possible*: 9'-0"

* -- Increasing ceiling height requires a Major Change.



Raspberry Biscotti

564.144

© 2013 Art Form Architecture, Inc. All Rights Reserved . <http://www.artformhomeplans.com>

Heights



Rosebud Cottage, Updated

056.120

© 2013 Art Form Architecture, Inc. All Rights Reserved . <http://www.artformhomeplans.com>



Rosebud is the smallest in our Rose Family, giving you charm and a ground floor master on a budget. The shed dormers are the simplest way to frame and still get some of the old New England feel.

We've just updated this design (March 2013) to show the drive-under garage and to add a duct chase.

	Living Area	Bedrooms	Bathrooms	Ceiling Height Shown	Ceiling Height Possible*
First Floor	833 SF	1	1.0	8'-0"	9'-0"
Second Floor	640 SF	2	2.0	8'-0"	8'-0"
Total Above Grade	1473 SF	3	3.0		
Basement	0 SF	0	0.0		

* -- Increasing ceiling height requires a Major Change.

<http://www.artformhomeplans.com/Contact.a5w>

<http://www.artformhomeplans.com/TermsConditions.a5w>

Rosebud Cottage, Updated

056.120

© 2013 Art Form Architecture, Inc. All Rights Reserved . <http://www.artformhomeplans.com>



First Floor

Living Area: 833 SF

Bedrooms: 1

Bathrooms: 1.0

Ceiling Height Shown: 8'-0"

Ceiling Height Possible*: 9'-0"

* -- Increasing ceiling height requires a Major Change.



Rosebud Cottage, Updated

056.120

© 2013 Art Form Architecture, Inc. All Rights Reserved . <http://www.artformhomeplans.com>

Second Floor

Living Area: 640 SF

Bedrooms: 2

Bathrooms: 2.0

Ceiling Height Shown: 8'-0"

Ceiling Height Possible*: 8'-0"

* -- Increasing ceiling height requires a Major Change.



Rosebud Cottage, Updated

056.120

© 2013 Art Form Architecture, Inc. All Rights Reserved . <http://www.artformhomeplans.com>

Basement Floor

Living Area: 0 SF

Bedrooms: 0

Bathrooms: 0.0

Ceiling Height Shown: 7'-8"

Ceiling Height Possible*: 9'-0"

* -- Increasing ceiling height requires a Major Change.



Rosebud Cottage, Updated

056.120

© 2013 Art Form Architecture, Inc. All Rights Reserved . <http://www.artformhomeplans.com>

Front Elevation



Rosebud Cottage, Updated

056.120

© 2013 Art Form Architecture, Inc. All Rights Reserved . <http://www.artformhomeplans.com>

Right Elevation



Rosebud Cottage, Updated

056.120

© 2013 Art Form Architecture, Inc. All Rights Reserved . <http://www.artformhomeplans.com>

Rear Elevation



©2008 Wendy Welton
Rosebud
Artform Home Plans



Rosebud Cottage, Updated

056.120

© 2013 Art Form Architecture, Inc. All Rights Reserved . <http://www.artformhomeplans.com>

Left Elevation



Shetland

537.126

© 2013 Art Form Architecture, Inc. All Rights Reserved . <http://www.artformhomeplans.com>



The Shetland was developed for the narrower lot. It's shown here as a slab-on-grade. It can be adapted to a full foundation as an upgrade. Notice the small Study - just big enough for the printer, household bills, etc.

	Living Area	Bedrooms	Bathrooms	Ceiling Height Shown	Ceiling Height Possible*
First Floor	1063 SF	1	1.5	9'-0"	8'-0"
Second Floor	821 SF	2	1.0	8'-0"	8'-0"
Total Above Grade	1884 SF	3	2.5		

* -- Increasing ceiling height requires a Major Change.

<http://www.artformhomeplans.com/Contact.a5w>

<http://www.artformhomeplans.com/TermsConditions.a5w>

Shetland

537.126

© 2013 Art Form Architecture, Inc. All Rights Reserved . <http://www.artformhomeplans.com>

First Floor

Living Area: 1063 SF

Bedrooms: 1

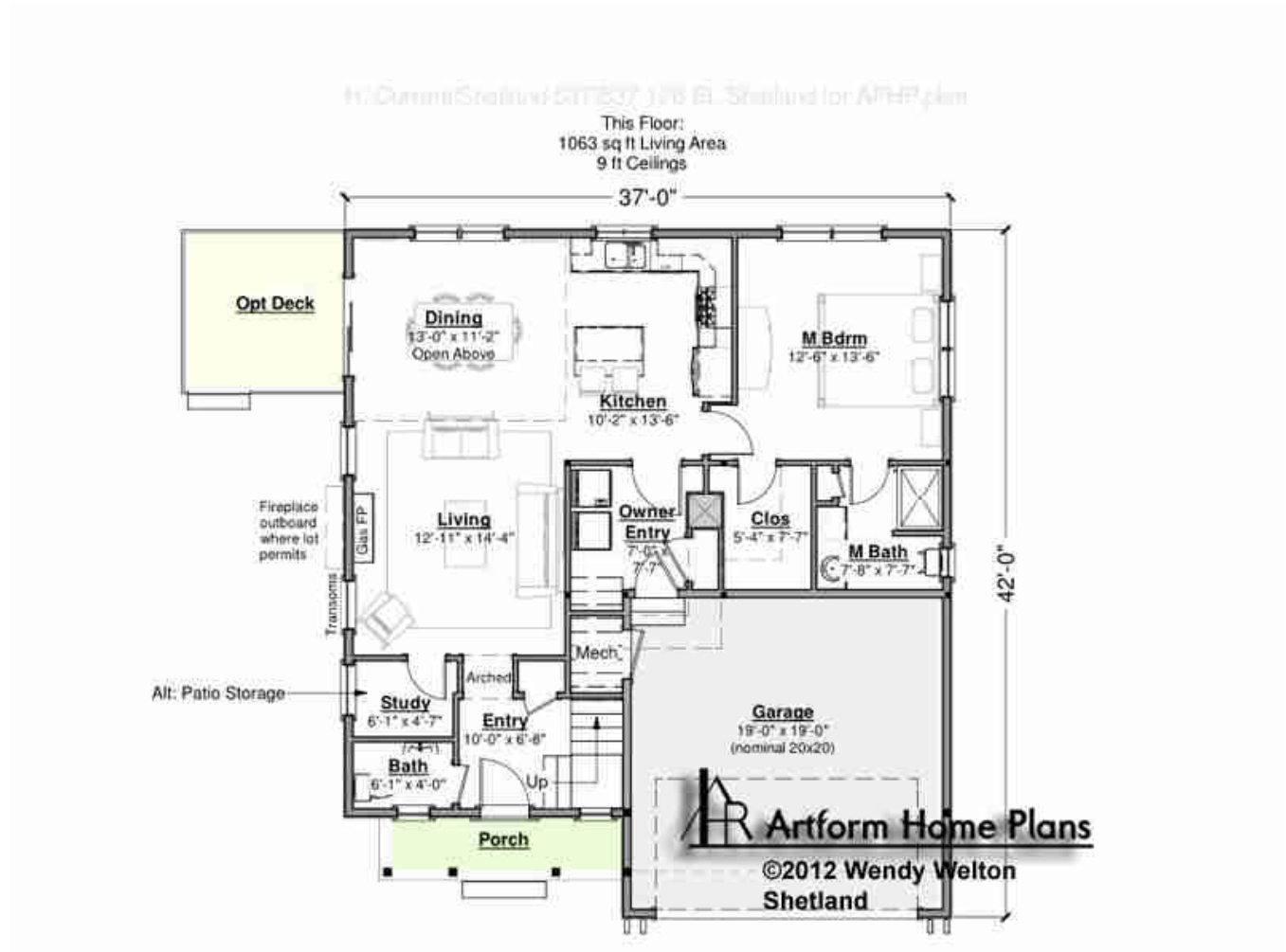
Bathrooms: 1.5

Ceiling Height Shown: 9'-0"

Ceiling Height Possible*: 8'-0"

* -- Increasing ceiling height requires a Major Change.

This plan is slab-on-grade standard. Full foundation is available as an upgrade. With a full basement the door to the basement stairs can be either in the Living Room (right next to where the mechanical room is now) or into the Owner Entry.



Shetland

537.126

© 2013 Art Form Architecture, Inc. All Rights Reserved . <http://www.artformhomeplans.com>

Second Floor

Living Area: 821 SF

Bedrooms: 2

Bathrooms: 1.0

Ceiling Height Shown: 8'-0"

Ceiling Height Possible*: 8'-0"

* -- Increasing ceiling height requires a Major Change.

The Study / Loft can be enclosed as an additional Bedroom. But the walk-in closet cannot be converted to a bath, due to building code height requirements.



100 Queen St. Shetland 537.126 Artform Home Plans



Shetland

537.126

© 2013 Art Form Architecture, Inc. All Rights Reserved . <http://www.artformhomeplans.com>

Left Elevation / Heights



AFHP Default Grade *1 is 1'-9" below first floor subfloor for consistency in how we list height on the web site. The distance to grade is often more. Talk to your builder.

*3 Height for zoning may be measured from the grade at the front, the lowest grade or an average. Talk to your builder and/or governing officials.

W:\Current\Shetland SET\537.126 EL-Shetland for AFHP.dwg

Shetland

537.126

© 2013 Art Form Architecture, Inc. All Rights Reserved . <http://www.artformhomeplans.com>

Front Elevation



Shetland

537.126

© 2013 Art Form Architecture, Inc. All Rights Reserved . <http://www.artformhomeplans.com>

Rear Elevation



Shetland

537.126

© 2013 Art Form Architecture, Inc. All Rights Reserved . <http://www.artformhomeplans.com>

Right Elevation



Vanilla Cupcake

626.124

© 2013 Art Form Architecture, Inc. All Rights Reserved . <http://www.artformhomeplans.com>



"But it looks exactly like the Vanilla Shortcake!" Yep, that's the point. Where the whole Bakery group was designed to be budget friendly, the Cupcake is even more so. It's for meeting the tightest budget, specifically when a percentage in a development has to be affordable, yet look just like the others. And yes, we can adapt to be Strawberry or the other Bakery flavors.

See more plans in the [Bakery Series](#) Collection.

	Living Area	Bedrooms	Bathrooms	Ceiling Height Shown	Ceiling Height Possible*
First Floor	1064 SF	1	1.0	8'-0"	8'-0"
Second Floor	716 SF	2	0.0	8'-0"	9'-0"
Total Above Grade	1780 SF	3	1.0		
Basement	0 SF	0	0.0		

* -- Increasing ceiling height requires a Major Change.

<http://www.artformhomeplans.com/Contact.a5w>

<http://www.artformhomeplans.com/TermsConditions.a5w>

Vanilla Cupcake

626.124

© 2013 Art Form Architecture, Inc. All Rights Reserved . <http://www.artformhomeplans.com>



First Floor

Living Area: 1064 SF

Bedrooms: 1

Bathrooms: 1.0

Ceiling Height Shown: 8'-0"

Ceiling Height Possible*: 8'-0"

* -- Increasing ceiling height requires a Major Change.

This first floor can also pair with the Shortcake upstairs. The cupcake was designed to be the affordable variation of the shortcake.



Vanilla Cupcake

626.124

© 2013 Art Form Architecture, Inc. All Rights Reserved . <http://www.artformhomeplans.com>

Second Floor

Living Area: 716 SF

Bedrooms: 2

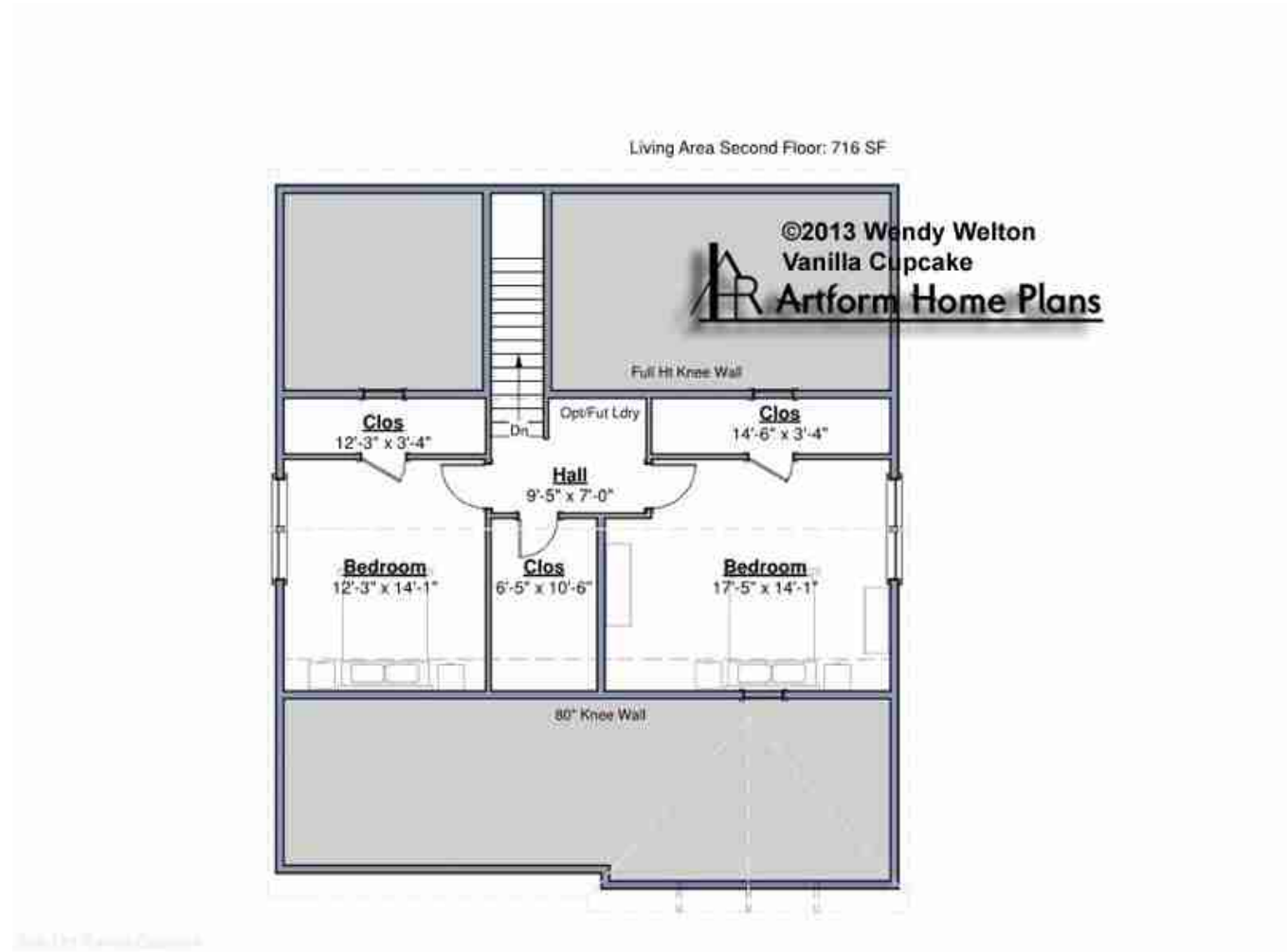
Bathrooms: 0.0

Ceiling Height Shown: 8'-0"

Ceiling Height Possible*: 9'-0"

* -- Increasing ceiling height requires a Major Change.

This second floor can also pair with the Shortcake first floor. The cupcake was designed to be the affordable variation of the shortcake. There is room for a wall and bifold doors for an optional laundry. The right wall of the large closet aligns over the wall below, making that space amenable to an optional bath.



Vanilla Cupcake

626.124

© 2013 Art Form Architecture, Inc. All Rights Reserved . <http://www.artformhomeplans.com>

Basement Floor

Living Area: 0 SF

Bedrooms: 0

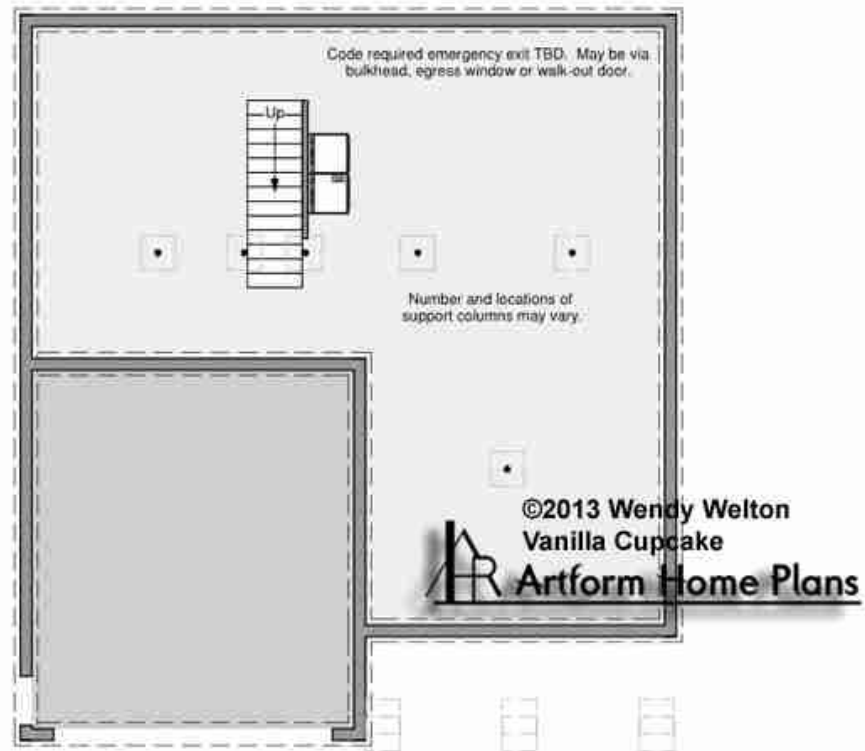
Bathrooms: 0.0

Ceiling Height Shown: 7'-8"

Ceiling Height Possible*: 7'-8"

* -- Increasing ceiling height requires a Major Change.

This basement varies only slightly from the shortcake - the stairs are about 6" closer to the rear wall.



Vanilla Cupcake

626.124

© 2013 Art Form Architecture, Inc. All Rights Reserved . <http://www.artformhomeplans.com>

Front Elevation



AFHP Default Grade *1 is 1'-9" below first floor subfloor for consistency in how we list height on the web site. The distance to grade is often more. Talk to your builder.

*3 Height for zoning may be measured from the grade at the front, the lowest grade or an average. Talk to your builder and/or governing officials.



Vanilla Cupcake

626.124

© 2013 Art Form Architecture, Inc. All Rights Reserved . <http://www.artformhomeplans.com>

Right Elevation



Vanilla Cupcake

626.124

© 2013 Art Form Architecture, Inc. All Rights Reserved . <http://www.artformhomeplans.com>

Rear Elevation



Vanilla Cupcake

626.124

© 2013 Art Form Architecture, Inc. All Rights Reserved . <http://www.artformhomeplans.com>

Left Elevation

