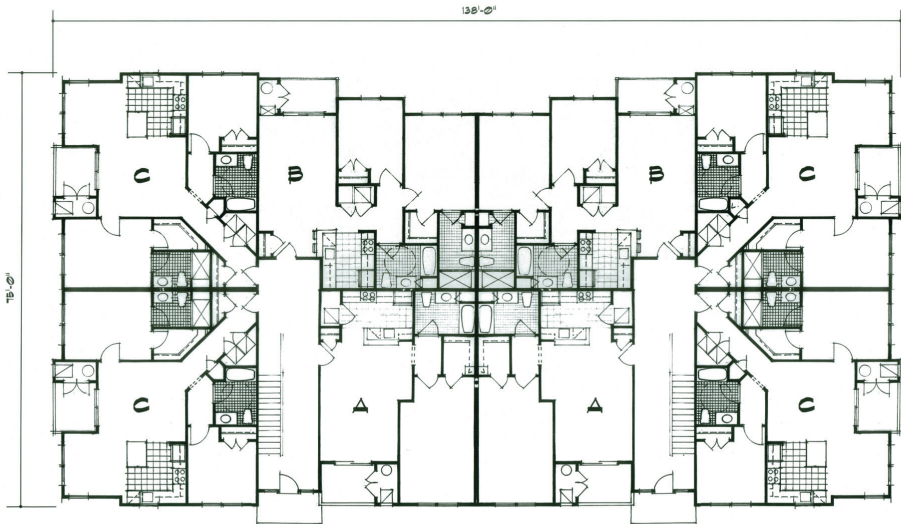
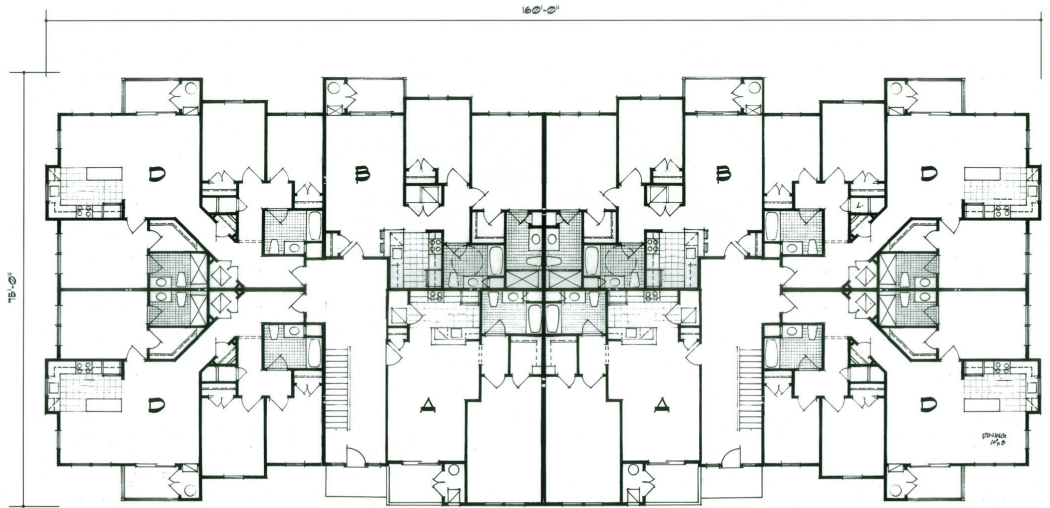




TYPICAL FRONT ELEVATION
24 AND 28 UNIT BLDG



1ST FLOOR PLAN WITH 2 BEDROOM UNITS



1ST FLOOR PLAN WITH 3 BEDROOM UNITS

15 GREAT ROAD

LITTLETON, MASSACHUSETTS
FIFTEEN GREAT ROAD II, LLC



Timothy F. Wentz, AIA
MA Reg. #10478

NO SCALE
MARCH 25, 2011
© 2011 - GATE 17 ARCHITECTURE, LLC

GATE
architecture
124 Monument Avenue
Malvern, Pennsylvania, 19355
610.240.4844