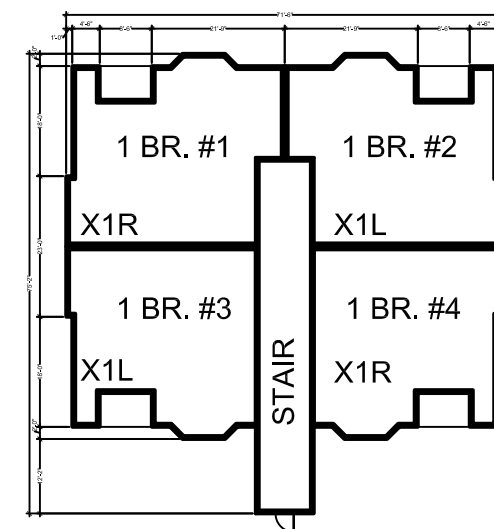
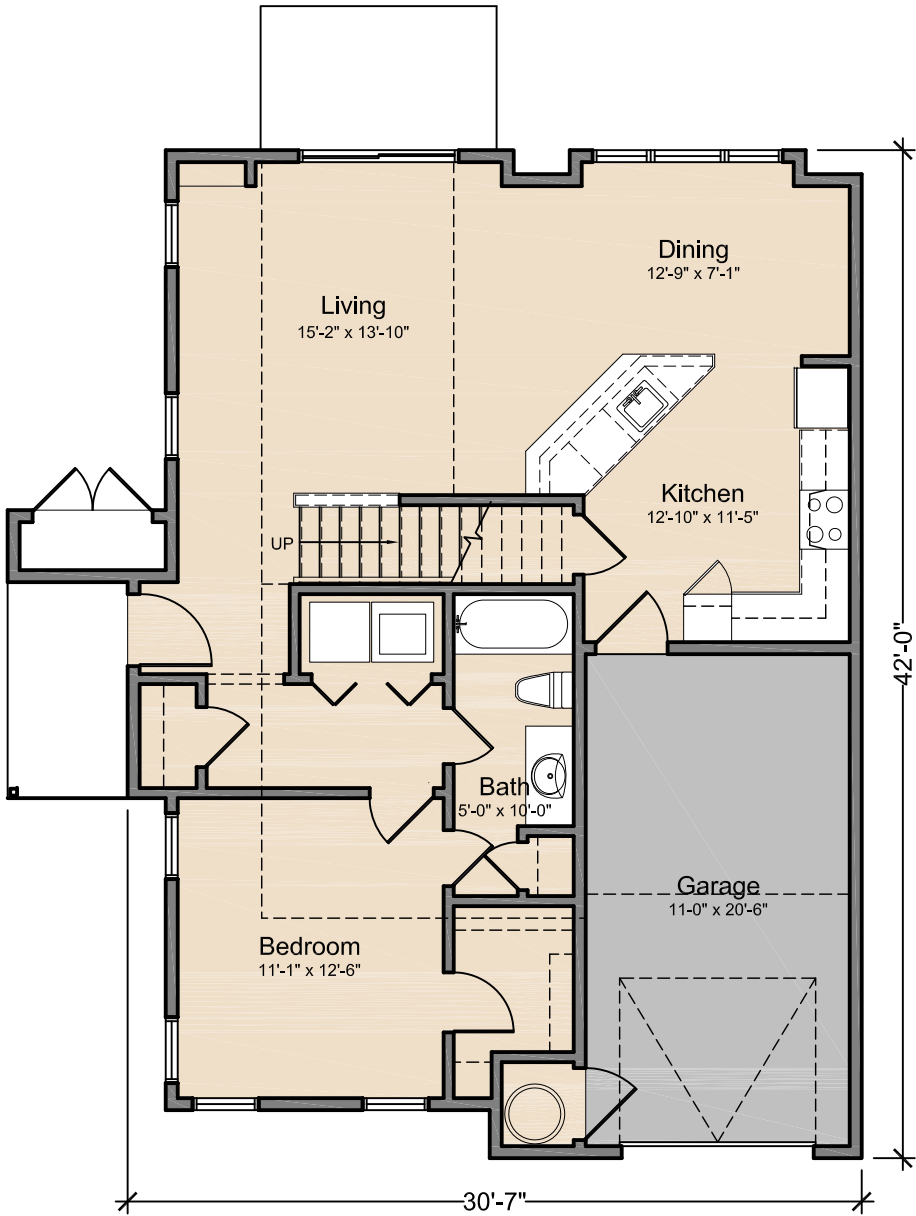


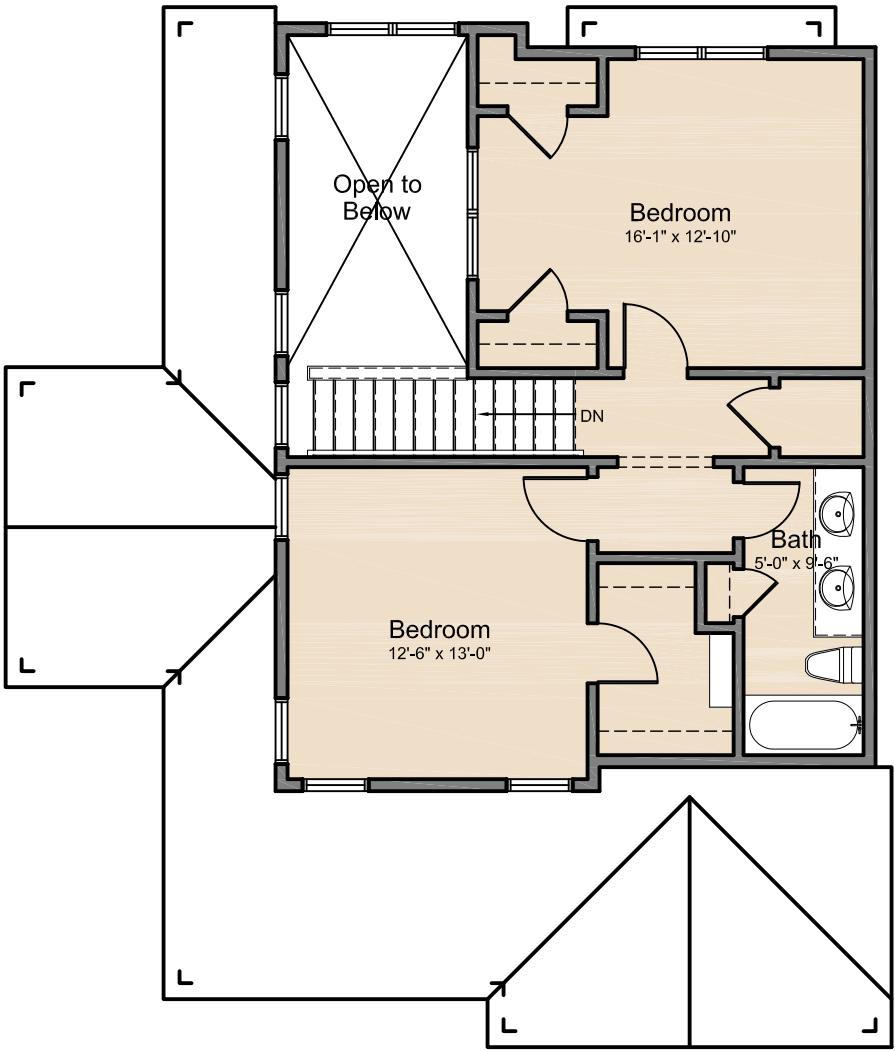
(4) 2 BEDROOMS AND (6) 1 BEDROOMS, (3) FLOORS, TOTAL UNITS=30  
2XXL = LOFTED UNIT



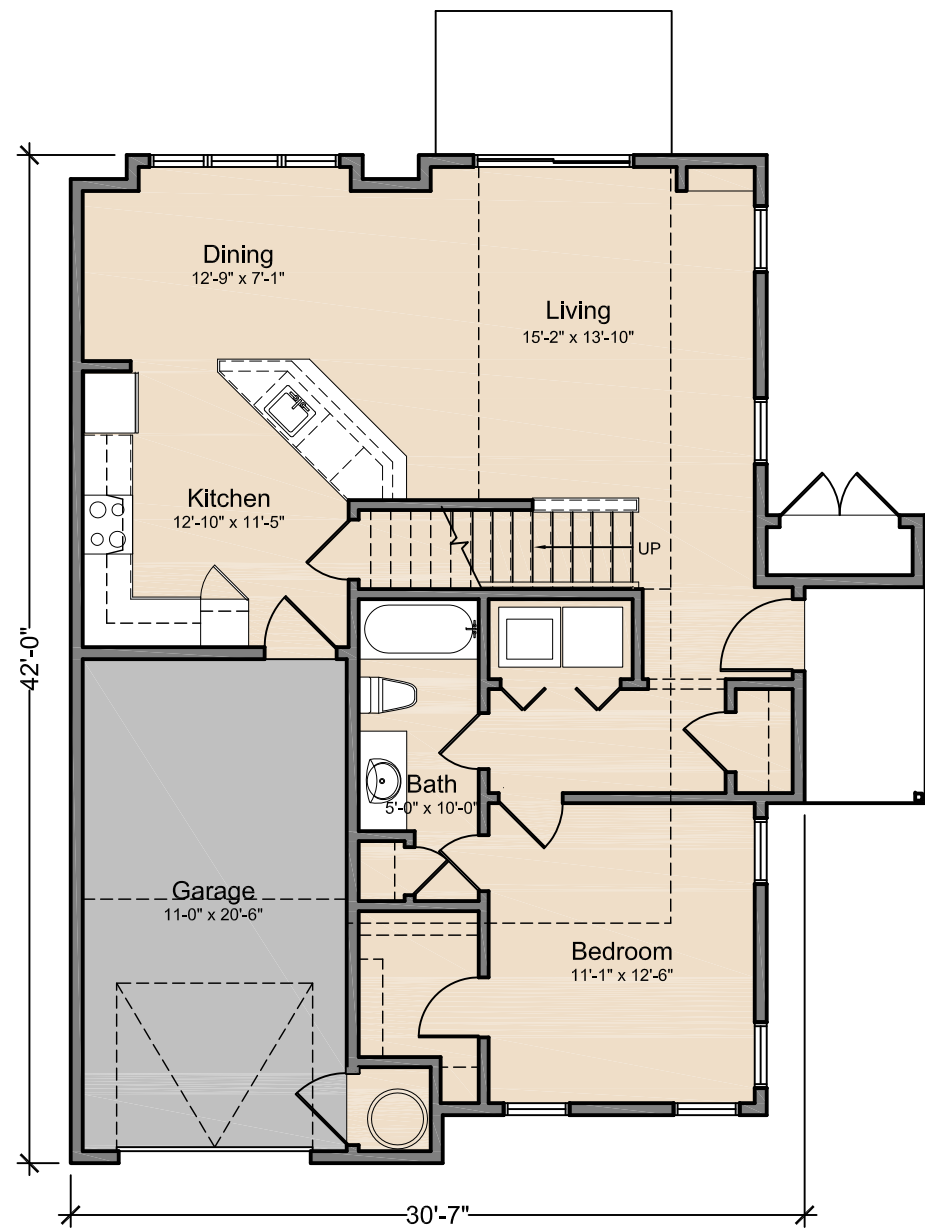
(4) 1 BEDROOMS, (3) FLOORS, TOTAL UNITS=12  
X1RL = LOFTED UNIT  
X1LL = LOFTED UNIT



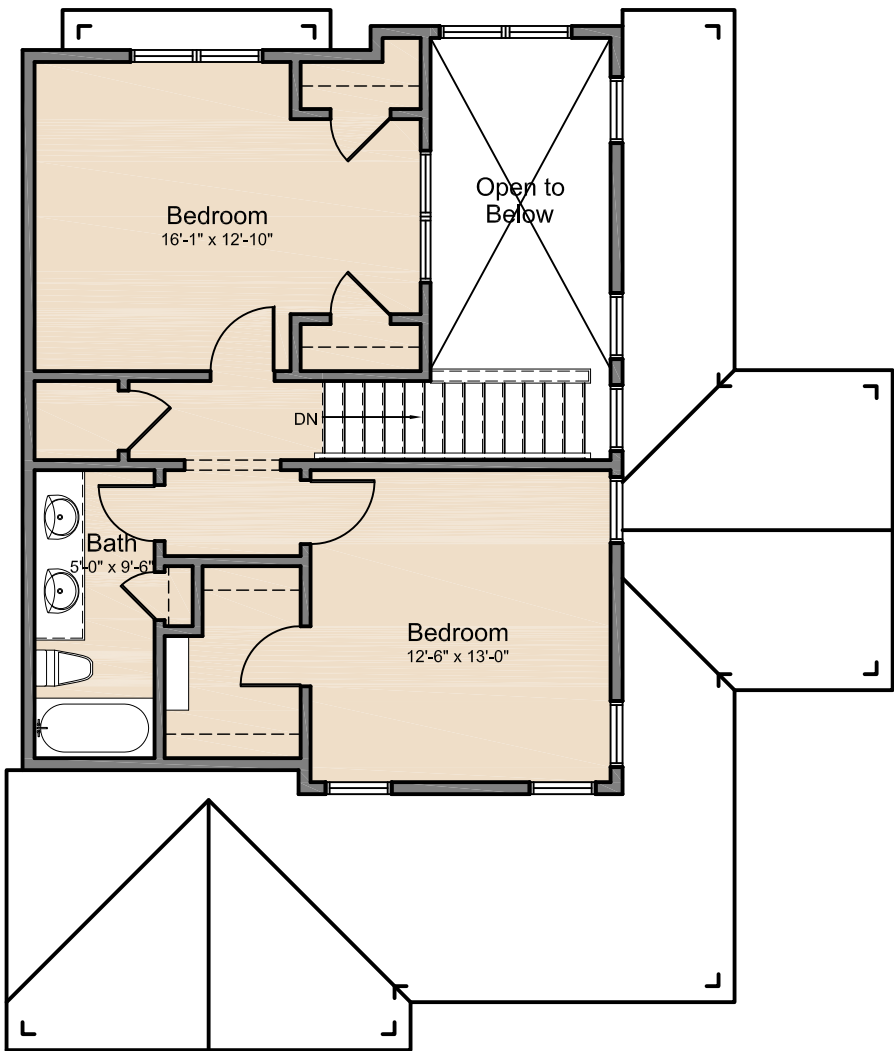
First Floor



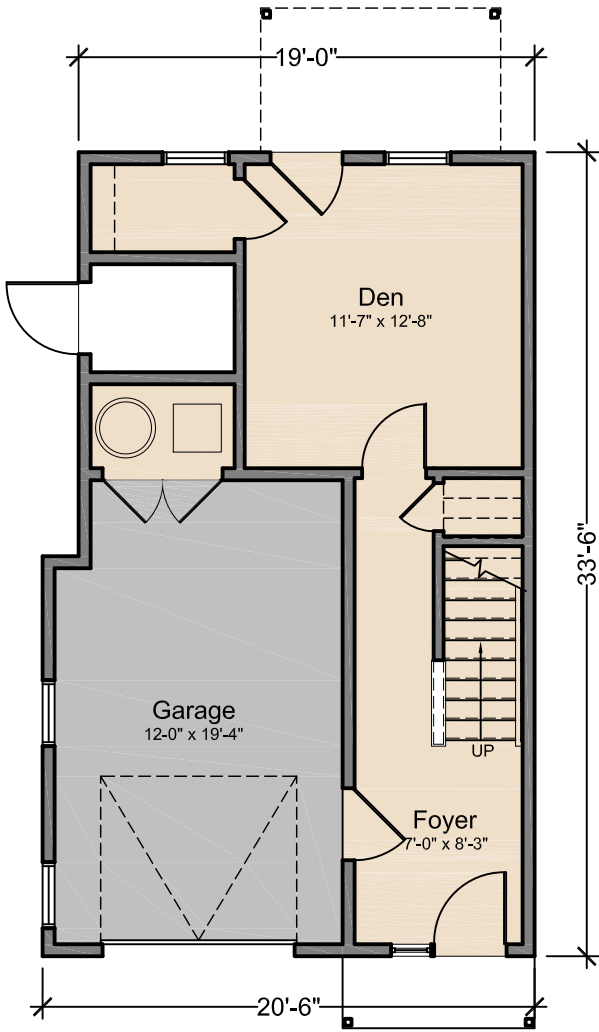
Second Floor



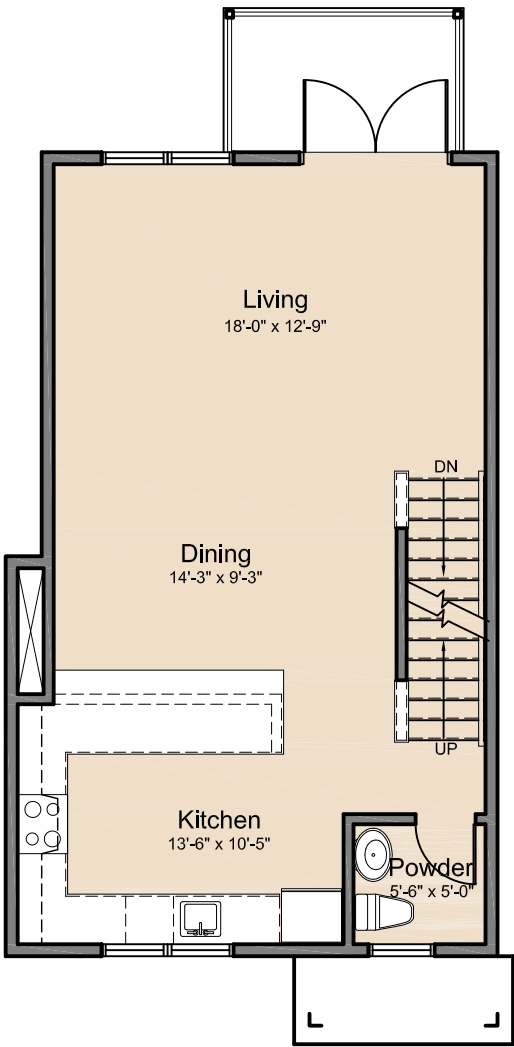
First Floor



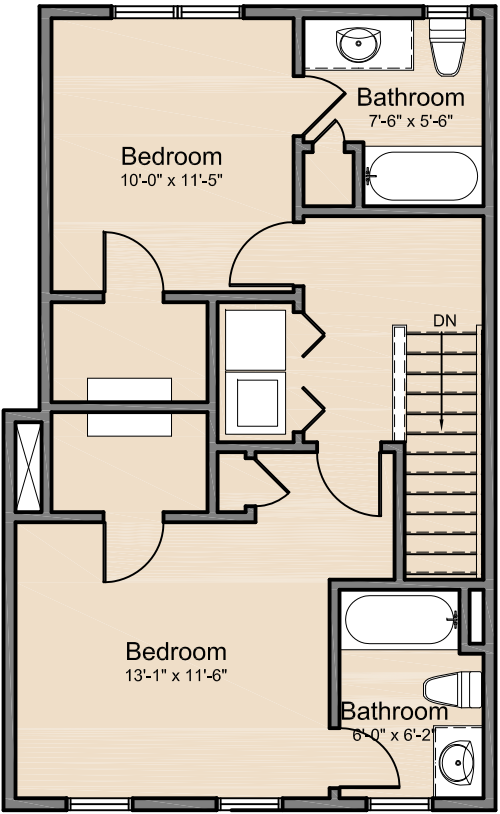
Second Floor



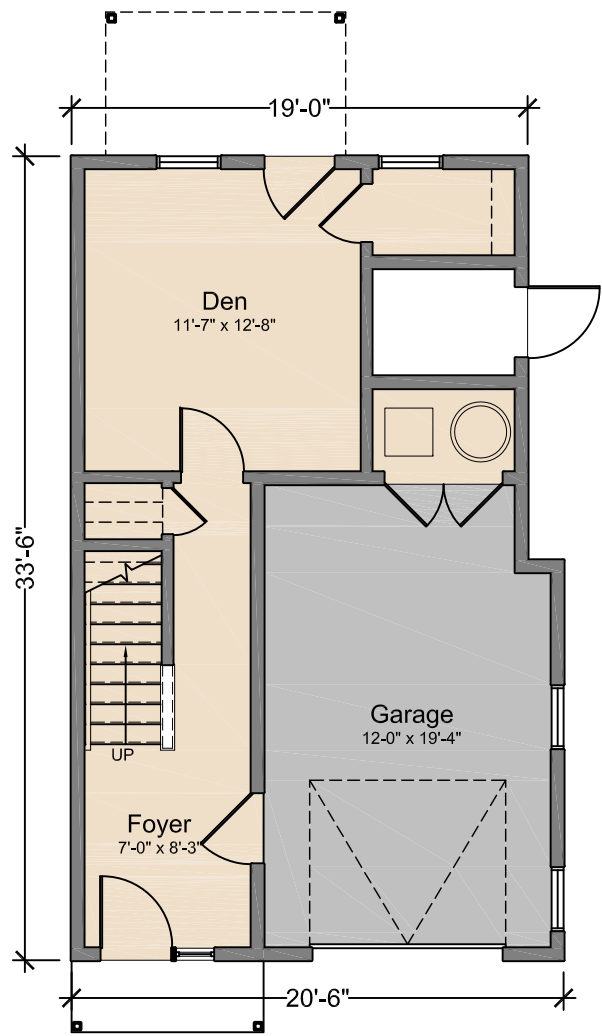
First Floor



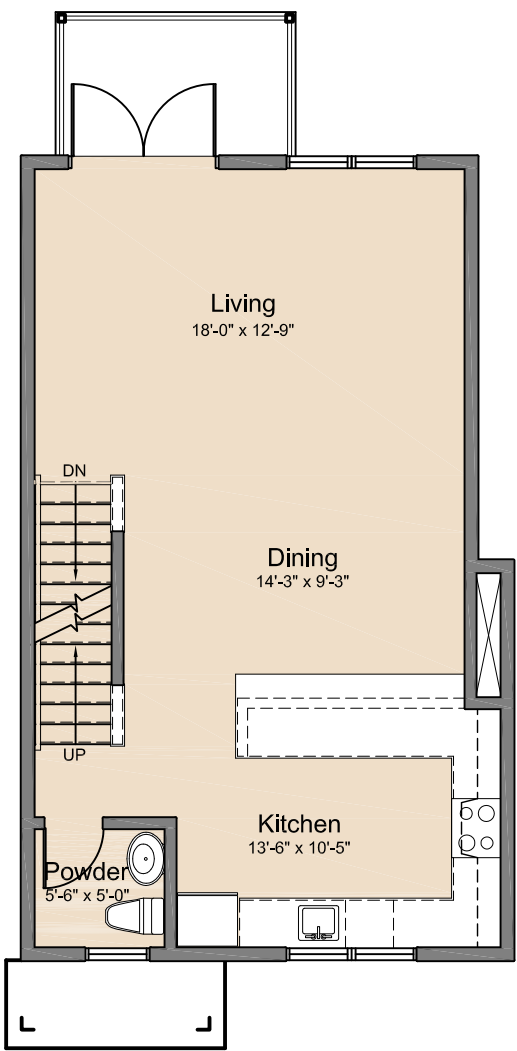
Second Floor



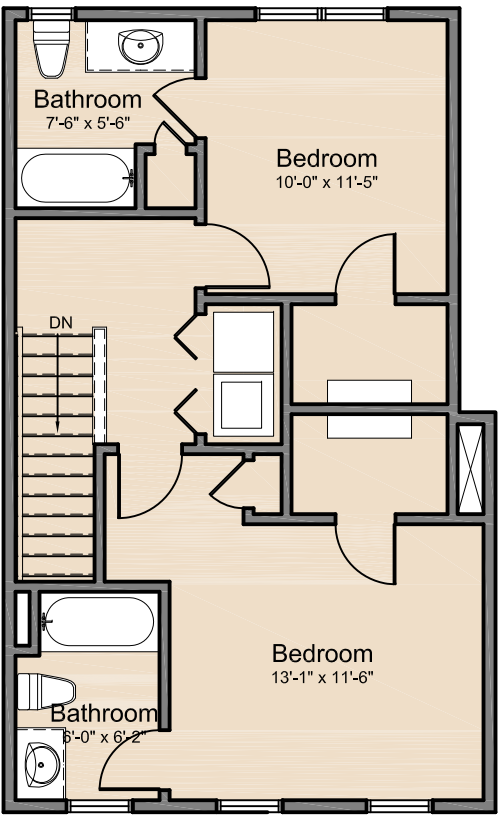
Third Floor



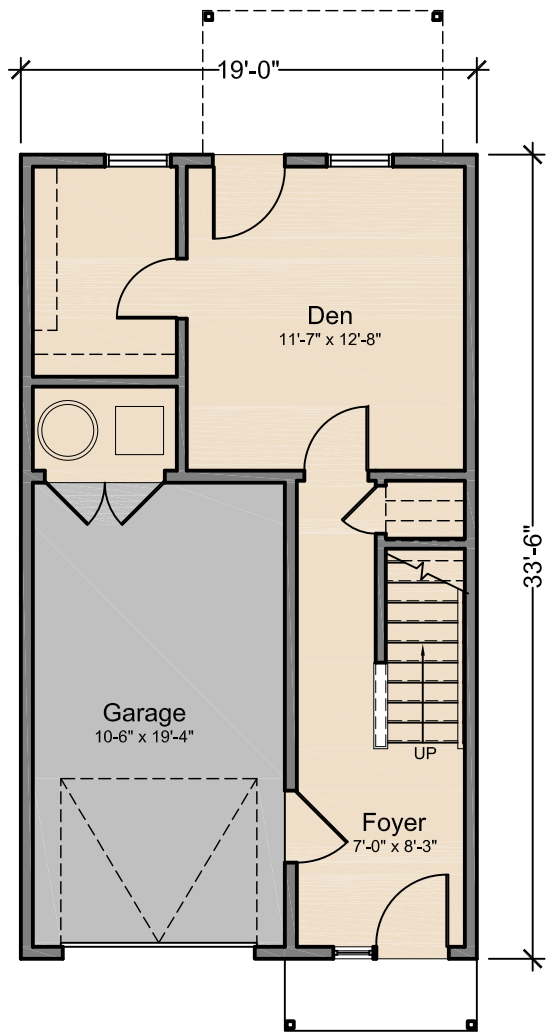
First Floor



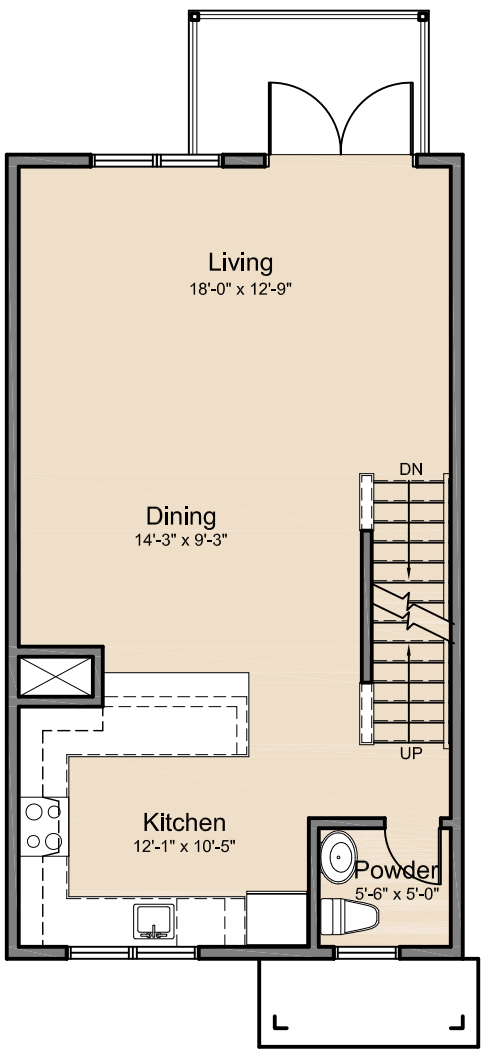
Second Floor



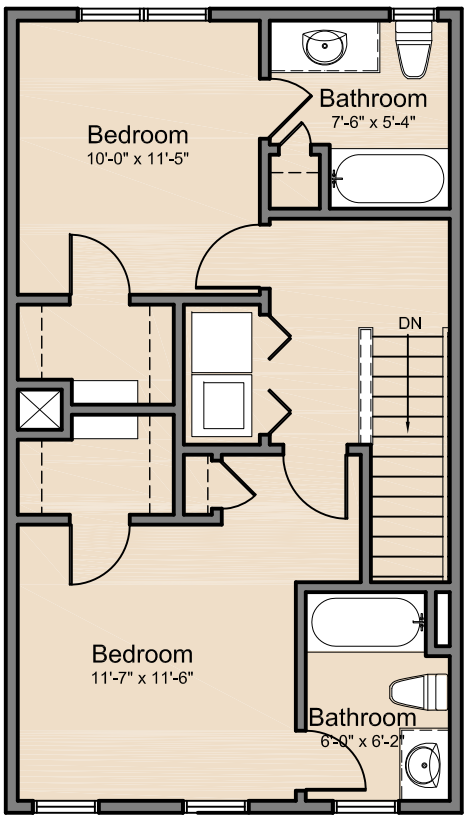
Third Floor



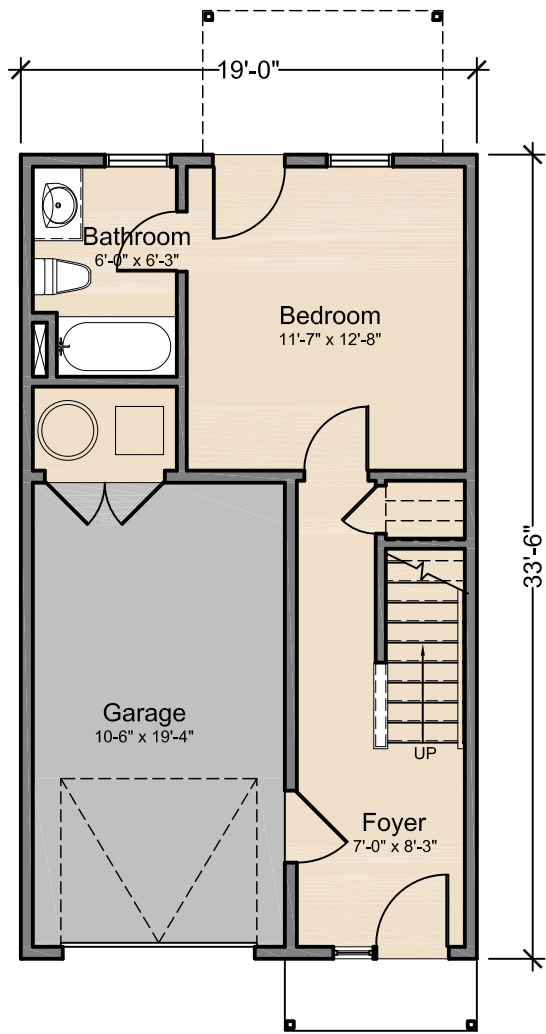
First Floor



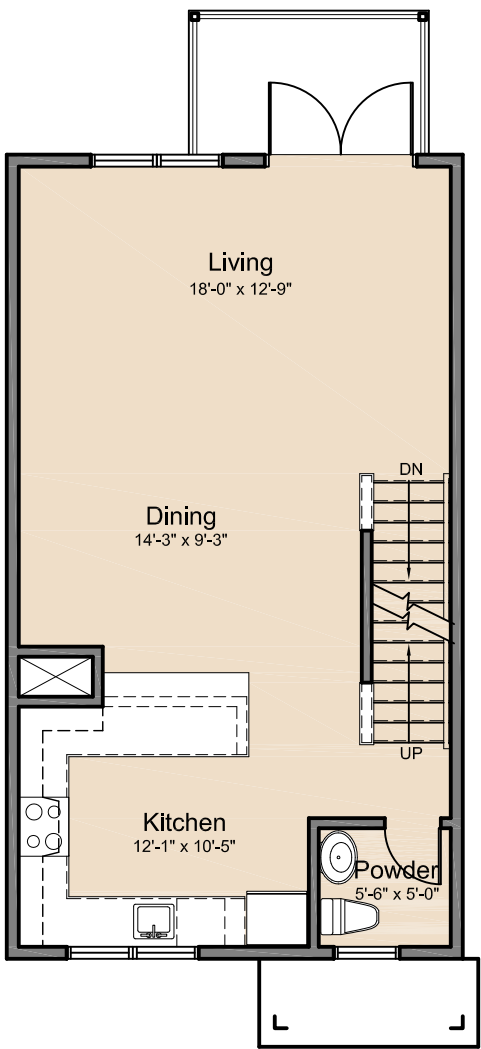
Second Floor



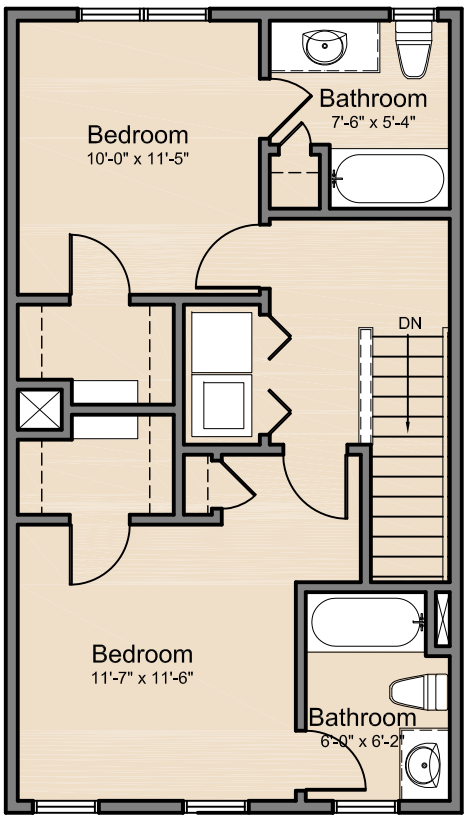
Third Floor



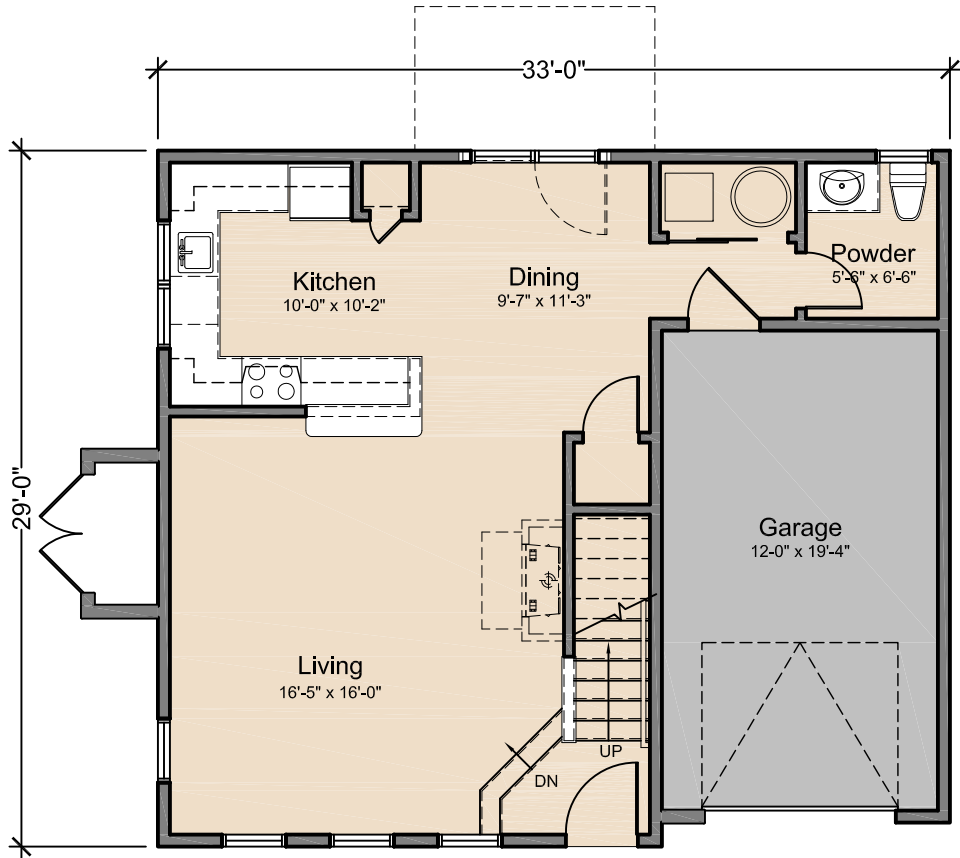
First Floor



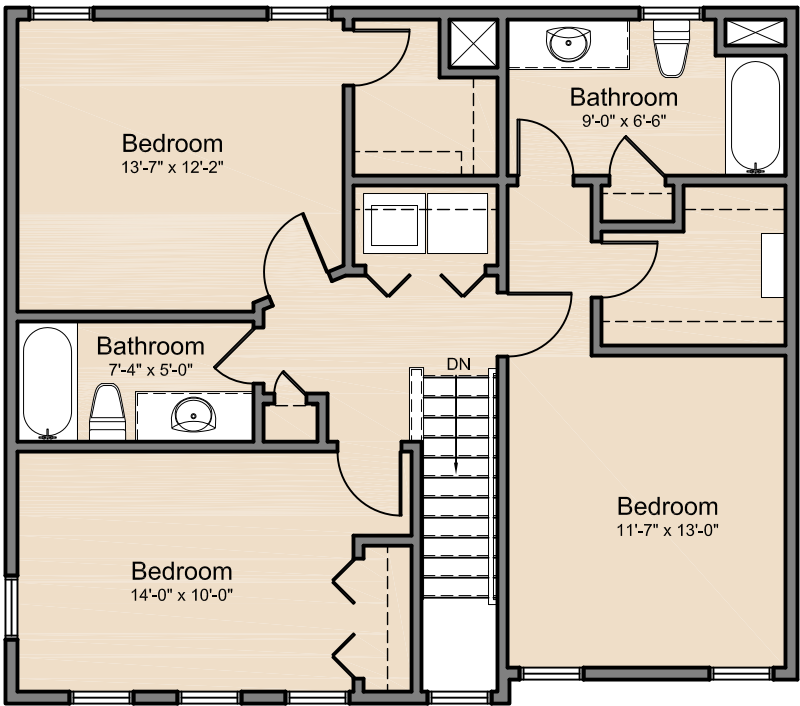
Second Floor



Third Floor

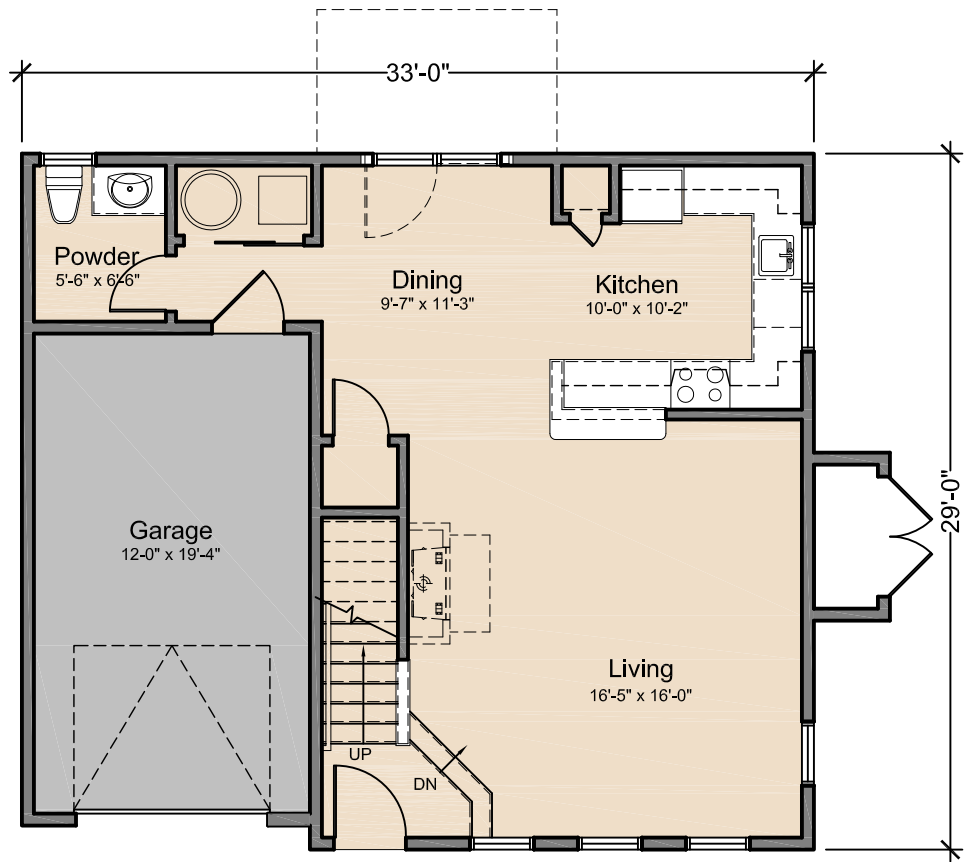


First Floor

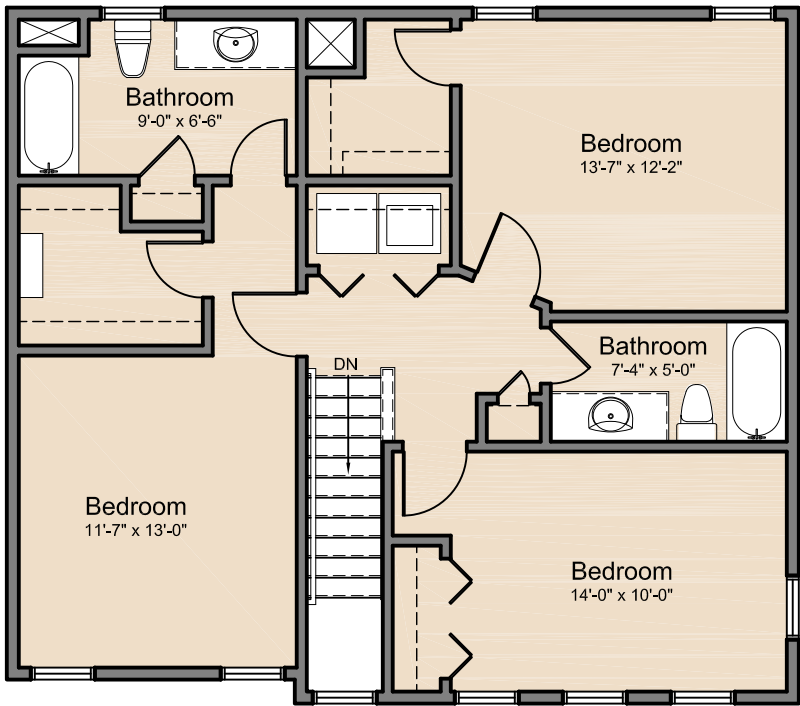


Second Floor

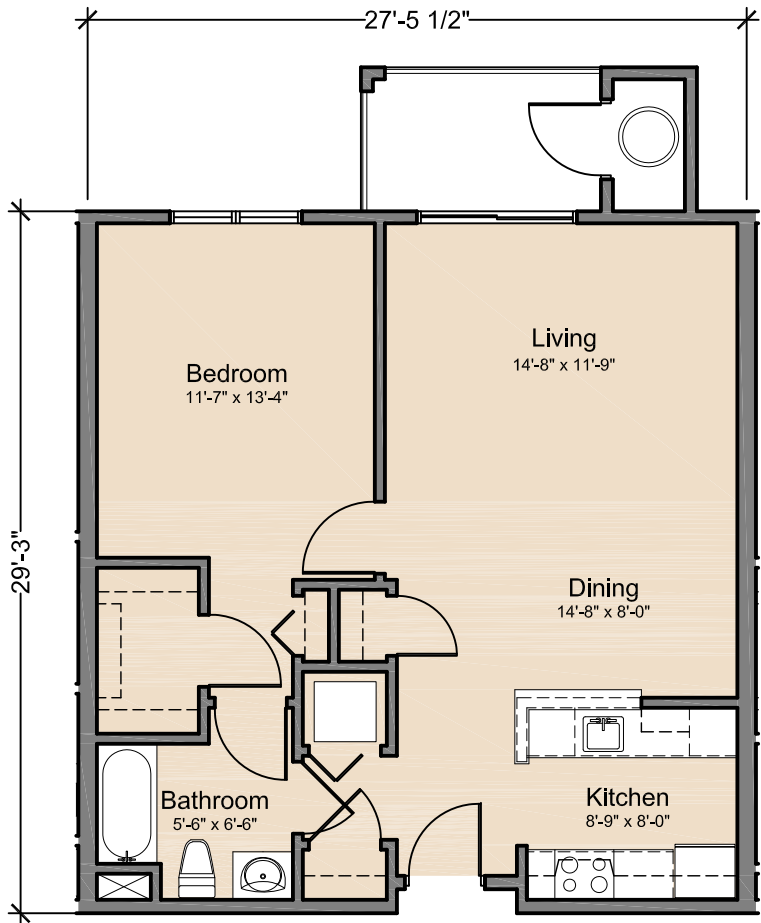




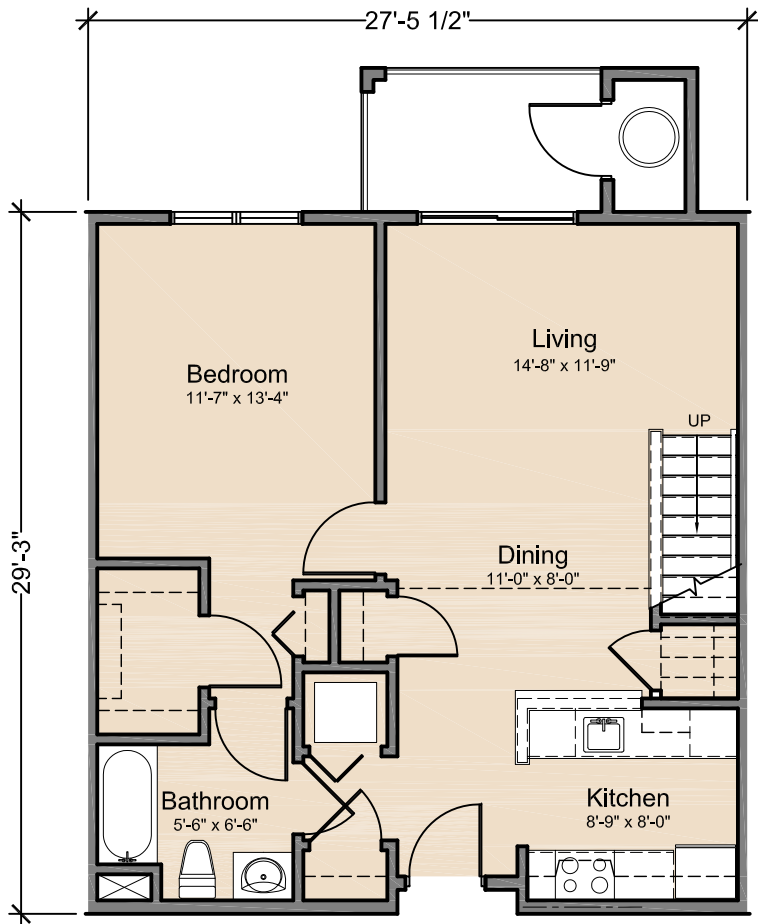
First Floor



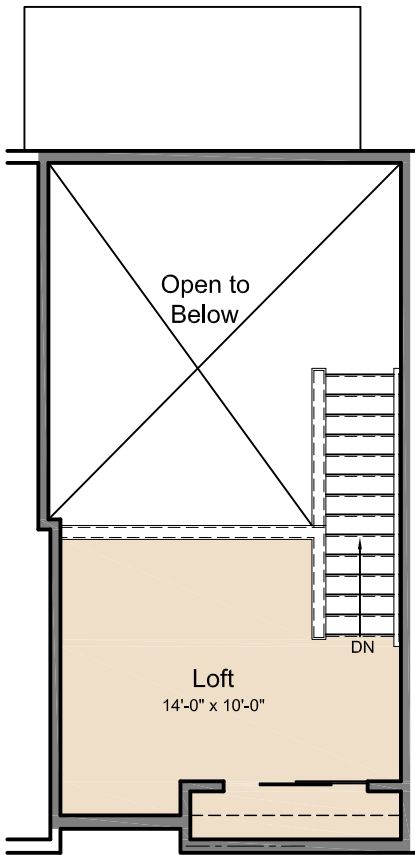
Second Floor



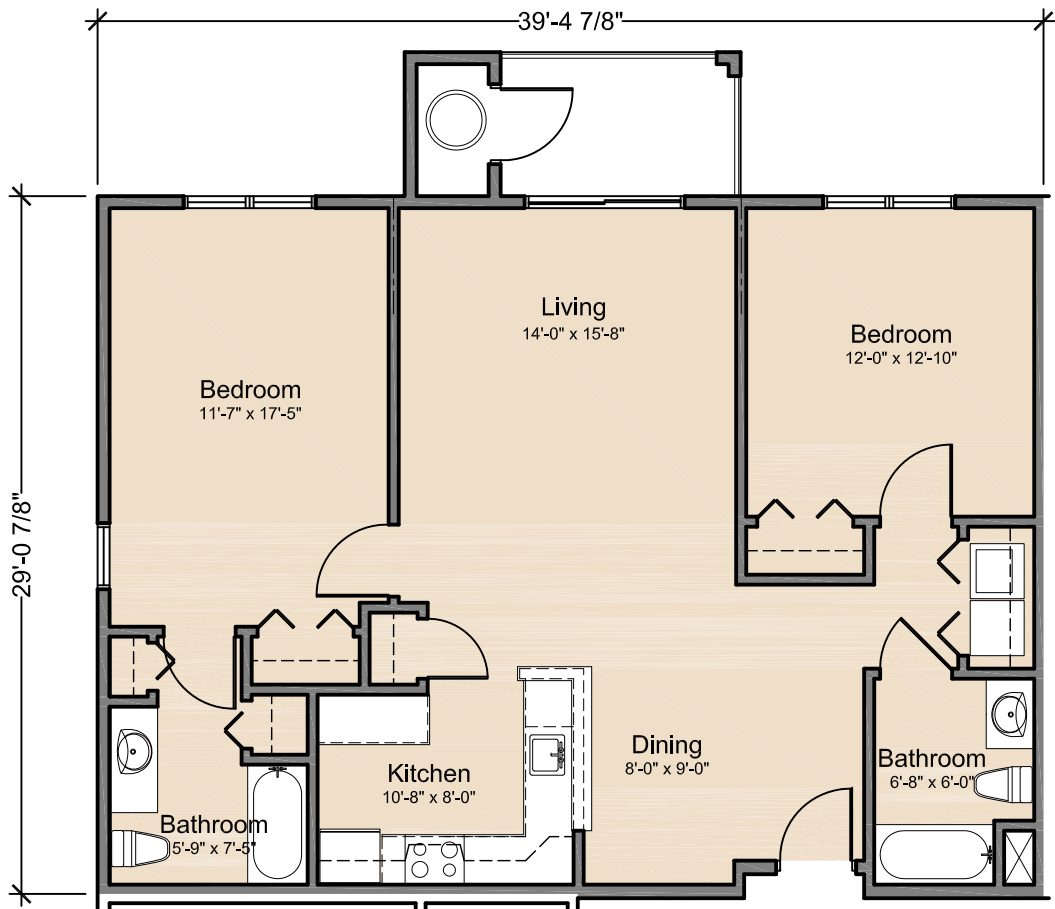
Floor Plan



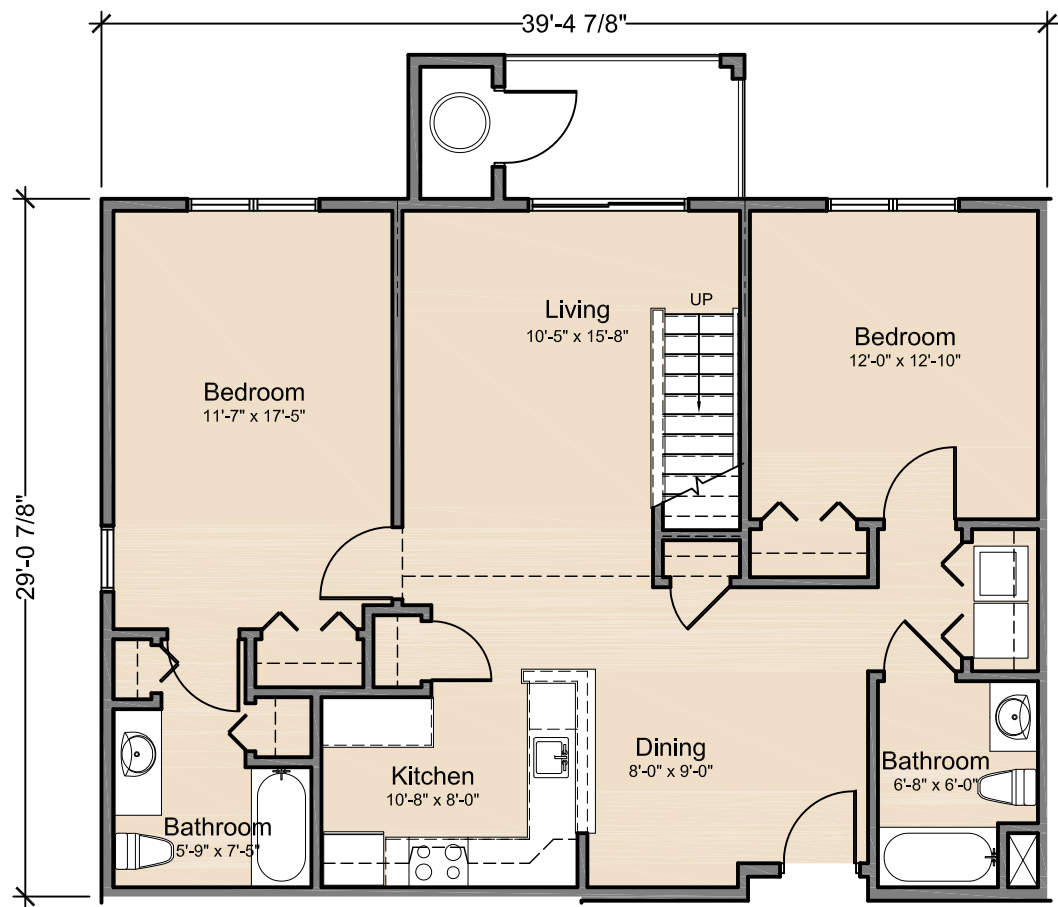
Third Floor Plan



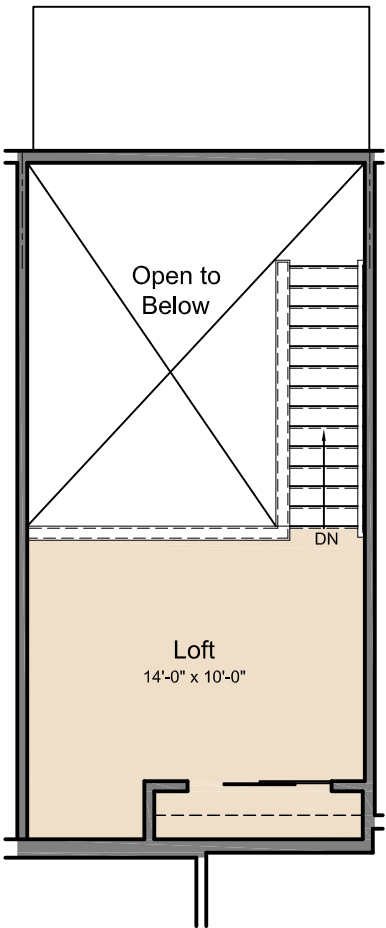
Loft Floor Plan



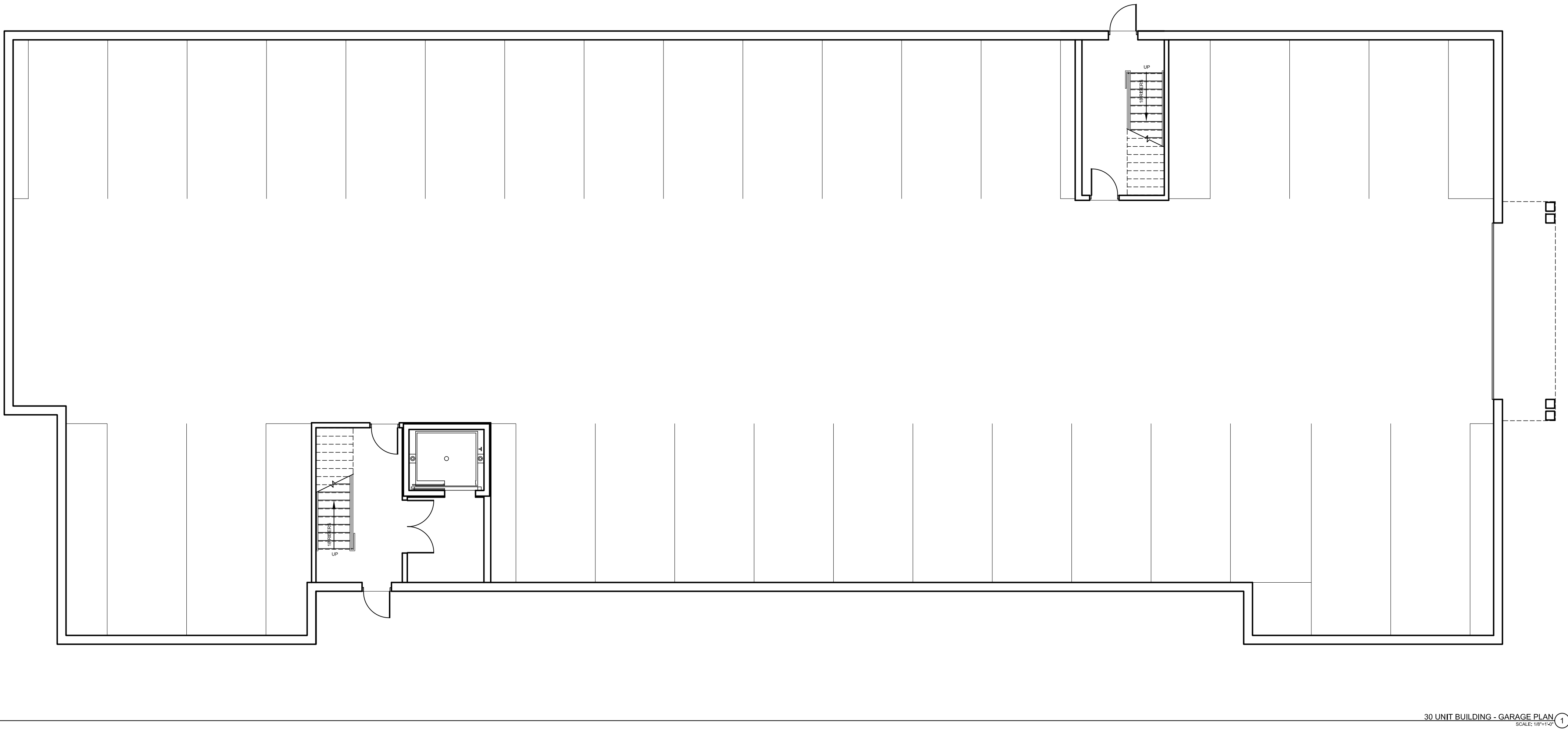
Floor Plan



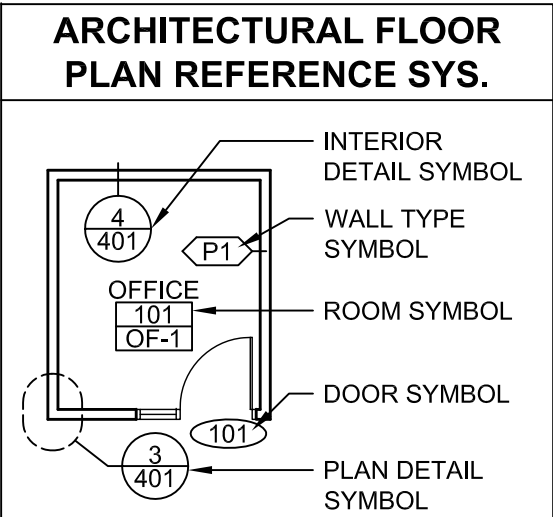
Third Floor Plan



Loft Floor Plan



Notes:



| PARTITION LEGEND |  |
|------------------|--|
|                  | EXISTING WALL, VERIFY CONSTRUCTION IN FIELD      |
|                  | BRICK VENEER EXTERIOR WALL WITH MTL STUD BACK-UP |
|                  | BRICK VENEER EXTERIOR WALL WITH MASONRY BACK-UP  |
|                  | EIFS EXTERIOR WALL                               |
|                  | CMU WALL   |
|                  | INTERIOR PARTITION                               |
|                  | NEW INTERIOR PARTITION                           |

**PARTITION NOTES**

1. ALL WALLS NOT KEYED IN BY WALL TYPE DESIGNATION TO BE PARTITION "P1", TYP

- DIMENSIONING NOTES**
1. EXTERIOR MASONRY WALLS ARE DIMENSIONED TO THE FACE OF MASONRY
  2. INTERIOR MASONRY WALLS ARE DIMENSIONED TO THE FACE OF MASONRY
  3. WOOD FRAMED EXTERIOR WALLS ARE DIMENSIONED TO THE EXTERIOR FACE OF STUD
  4. INTERIOR PARTITIONS ARE DIMENSIONED TO THE CENTERLINE, UON

| FIRE EXTINGUISHER SCHEDULE |  |
|----------------------------|--|
| FE-1                       | SURFACE MOUNT FIRE EXTINGUISHER, JL INDUSTRIES COSMIX 5X   |
| FE-2                       | RECESSED FIRE EXTINGUISHER - 1-1/2" TRIM, JL INDUSTRIES COSMIC 5X, CABINET #1826G17, MILL FINISH |

Key Plan:

Architect's Stamp:

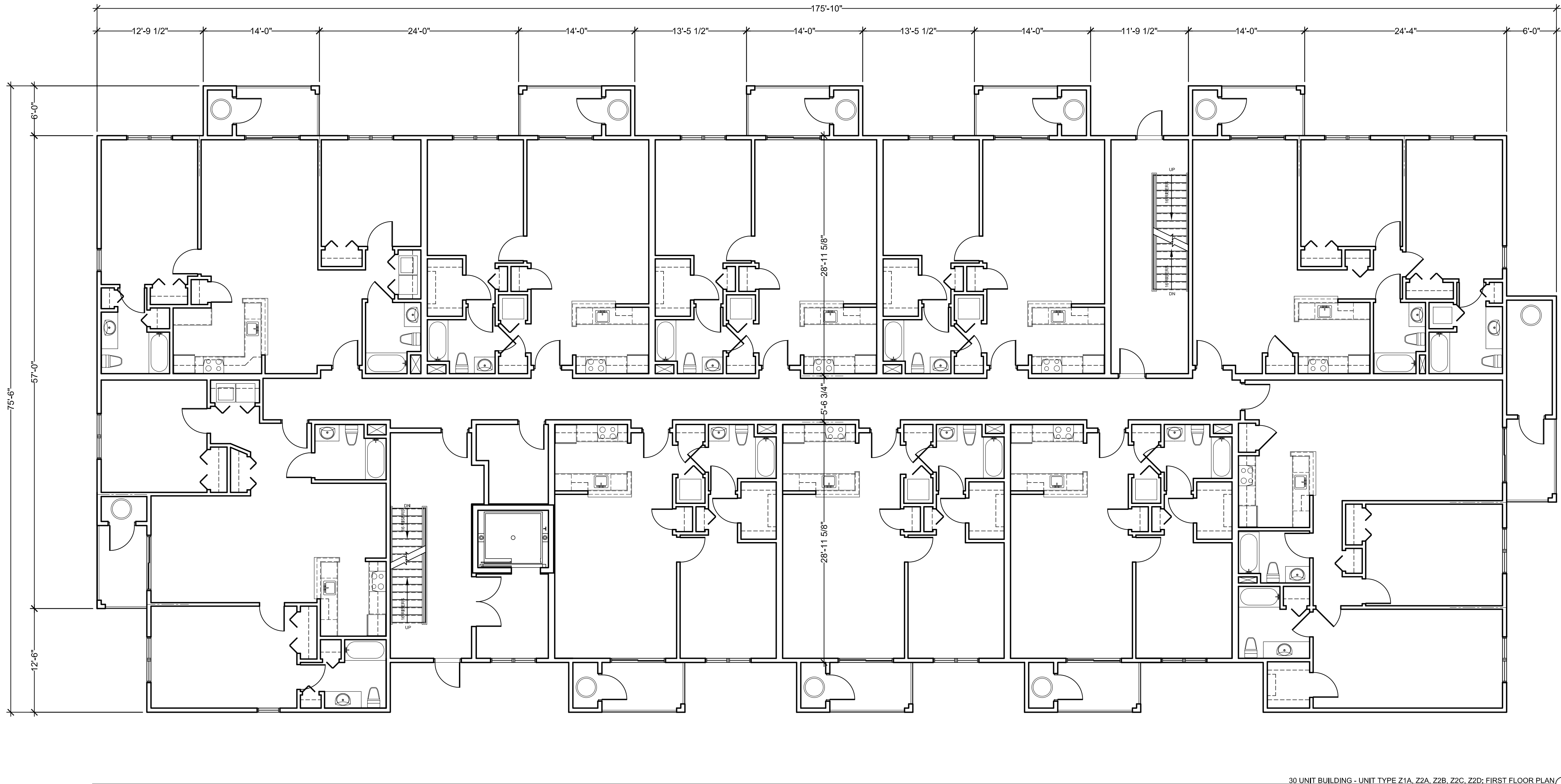
**Project:**  
**Fifteen Great Road II LLC**  
15 Great Road,  
Littleton, MA.  
**Client:**  
Omni Properties, LLC  
200 Baker Ave, Suite 303  
Concord, MA 01742  
Tel: (978) 369-4884  
**Project #:** 12023  
**Scale:** As Noted

|               |              |
|---------------|--------------|
| <b>Issue:</b> | <b>Date:</b> |
| Progress      | 4/30/2012    |

|                   |              |
|-------------------|--------------|
| <b>Revisions:</b> | <b>Date:</b> |
|                   |              |
|                   |              |
|                   |              |
|                   |              |
|                   |              |
|                   |              |

**Drawing Title:**  
Building Z  
Garage Plan  
**Sheet Number:**  
**A.100**  
**MAUGEL ARCHITECTS INC**  
200 Ayer Road, Harvard, MA 01451  
Tel: (978) 456-2800 Fax: (978) 456-2801  
www.maugel.com

THESE DOCUMENTS AND ALL IDEAS, ARRANGEMENTS, DESIGNS AND PLANS INDICATED THEREON OR REPRESENTED THEREBY ARE OWNED BY AND REMAIN THE PROPERTY OF MAUGEL ARCHITECTS, INC. AND NO PART THEREOF SHALL BE REPRODUCED OR TRANSMITTED IN ANY FORM OR BY ANY MEANS, ELECTRONIC OR MECHANICAL, INCLUDING PHOTOCOPYING, RECORDING, OR BY ANY INFORMATION STORAGE AND RETRIEVAL SYSTEM, WITHOUT THE WRITTEN PERMISSION OF MAUGEL ARCHITECTS, INC.



Notes:

**ARCHITECTURAL FLOOR PLAN REFERENCE SYS.**

INTERIOR DETAIL SYMBOL  
WALL TYPE SYMBOL  
ROOM SYMBOL  
DOOR SYMBOL  
PLAN DETAIL SYMBOL

**PARTITION LEGEND**

|          |  |
|----------|--|
| [Symbol] | EXISTING WALL, VERIFY CONSTRUCTION IN FIELD      |
| [Symbol] | BRICK VENEER EXTERIOR WALL WITH MTL STUD BACK-UP |
| [Symbol] | BRICK VENEER EXTERIOR WALL WITH MASONRY BACK-UP  |
| [Symbol] | EIFS EXTERIOR WALL                               |
| [Symbol] | CMU WALL   |
| [Symbol] | INTERIOR PARTITION                               |
| [Symbol] | NEW INTERIOR PARTITION                           |

**PARTITION NOTES**

1. ALL WALLS NOT KEYED IN BY WALL TYPE DESIGNATION TO BE PARTITION "P1", TYP

**DIMENSIONING NOTES**

1. EXTERIOR MASONRY WALLS ARE DIMENSIONED TO THE FACE OF MASONRY
2. INTERIOR MASONRY WALLS ARE DIMENSIONED TO THE FACE OF MASONRY
3. WOOD FRAMED EXTERIOR WALLS ARE DIMENSIONED TO THE EXTERIOR FACE OF STUD
4. INTERIOR PARTITIONS ARE DIMENSIONED TO THE CENTERLINE, UON

**FIRE EXTINGUISHER SCHEDULE**

|      |  |
|------|--|
| FE-1 | SURFACE MOUNT FIRE EXTINGUISHER, JL INDUSTRIES COSMIX 5X   |
| FE-2 | RECESSED FIRE EXTINGUISHER - 1-1/2" TRIM, JL INDUSTRIES COSMIX 5X, CABINET #1826G17, MILL FINISH |

Key Plan:

Architect's Stamp:

**Project:**  
**Fifteen Great Road II LLC**  
15 Great Road,  
Littleton, MA.

**Client:**  
Omni Properties, LLC  
200 Baker Ave, Suite 303  
Concord, MA 01742  
Tel: (978) 369-4884

**Project #:** 12023

**Scale:** As Noted

|               |              |
|---------------|--------------|
| <b>Issue:</b> | <b>Date:</b> |
| Progress      | 4/30/2012    |

|                   |              |
|-------------------|--------------|
| <b>Revisions:</b> | <b>Date:</b> |
|                   |              |
|                   |              |
|                   |              |
|                   |              |
|                   |              |
|                   |              |

**Drawing Title:**  
Unit Type Z1A, Z2A, Z2B, Z2C, & Z2D  
First Floor Plan

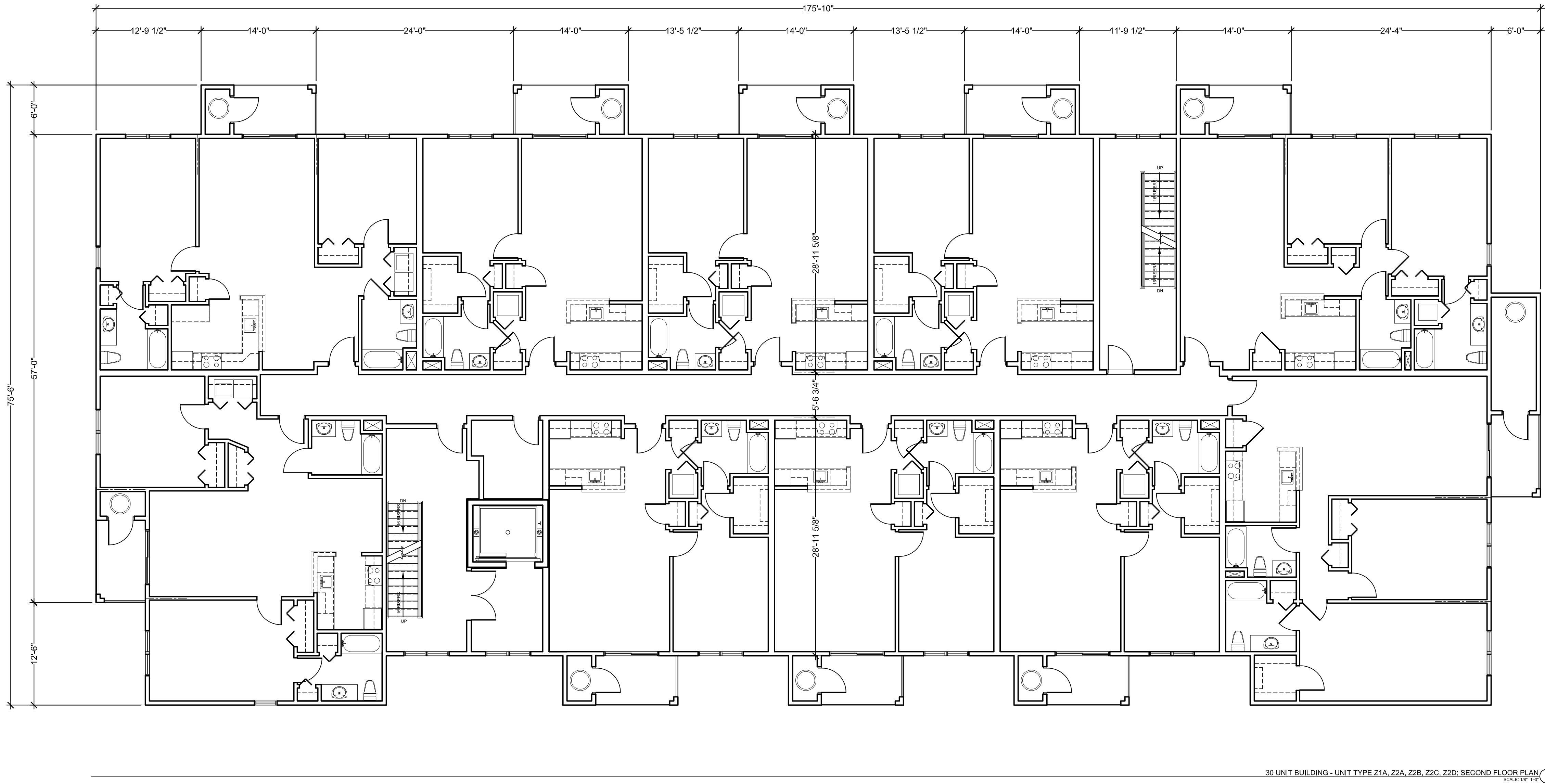
**Sheet Number:**  
**A.101**

**MAUGEL ARCHITECTS INC.**

200 Ayer Road, Harvard, MA 01451  
Tel: (978) 456-2800 Fax: (978) 456-2801  
www.maugel.com

THESE DOCUMENTS AND ALL IDEAS, ARRANGEMENTS, DESIGNS AND PLANS INDICATED THEREON OR REPRESENTED THEREON ARE OWNED BY AND REMAIN THE PROPERTY OF MAUGEL ARCHITECTS, INC. AND NO PART THEREOF SHALL BE REPRODUCED OR TRANSMITTED IN ANY FORM OR BY ANY MEANS, ELECTRONIC OR MECHANICAL, INCLUDING PHOTOCOPYING, RECORDING, OR BY ANY INFORMATION STORAGE AND RETRIEVAL SYSTEM, WITHOUT THE WRITTEN PERMISSION OF MAUGEL ARCHITECTS, INC.





30 UNIT BUILDING - UNIT TYPE Z1A, Z2A, Z2B, Z2C, Z2D; SECOND FLOOR PLAN 1  
SCALE: 1/8"=1'-0"

Notes:

**ARCHITECTURAL FLOOR PLAN REFERENCE SYS.**

INTERIOR DETAIL SYMBOL  
WALL TYPE SYMBOL  
ROOM SYMBOL  
DOOR SYMBOL  
PLAN DETAIL SYMBOL

**PARTITION LEGEND**

|          |  |
|----------|--|
| [Symbol] | EXISTING WALL, VERIFY CONSTRUCTION IN FIELD      |
| [Symbol] | BRICK VENEER EXTERIOR WALL WITH MTL STUD BACK-UP |
| [Symbol] | BRICK VENEER EXTERIOR WALL WITH MASONRY BACK-UP  |
| [Symbol] | EIFS EXTERIOR WALL                               |
| [Symbol] | CMU WALL   |
| [Symbol] | INTERIOR PARTITION                               |
| [Symbol] | NEW INTERIOR PARTITION                           |

**PARTITION NOTES**

1. ALL WALLS NOT KEYED IN BY WALL TYPE DESIGNATION TO BE PARTITION "P1", TYP

**DIMENSIONING NOTES**

1. EXTERIOR MASONRY WALLS ARE DIMENSIONED TO THE FACE OF MASONRY  
2. INTERIOR MASONRY WALLS ARE DIMENSIONED TO THE FACE OF MASONRY  
3. WOOD FRAMED EXTERIOR WALLS ARE DIMENSIONED TO THE EXTERIOR FACE OF STUD  
4. INTERIOR PARTITIONS ARE DIMENSIONED TO THE CENTERLINE, UCN

**FIRE EXTINGUISHER SCHEDULE**

|      |  |
|------|--|
| FE-1 | SURFACE MOUNT FIRE EXTINGUISHER, JI INDUSTRIES COSMIX 5X   |
| FE-2 | RECESSED FIRE EXTINGUISHER - 1-1/2" TRIM, JI INDUSTRIES COSMIX 5X, CABINET #1826G17, MILL FINISH |

Key Plan:

Architect's Stamp:

**Project:**  
**Fifteen Great Road II LLC**  
15 Great Road,  
Littleton, MA.

**Client:**  
Omni Properties, LLC  
200 Baker Ave, Suite 303  
Concord, MA 01742  
Tel: (978) 369-4884

**Project #:** 12023

**Scale:** As Noted

|               |              |
|---------------|--------------|
| <b>Issue:</b> | <b>Date:</b> |
| Progress      | 4/30/2012    |

| Revisions: | Date: |
|------------|-------|
|            |       |
|            |       |
|            |       |
|            |       |
|            |       |
|            |       |
|            |       |

**Drawing Title:**  
Unit Type Z1A, Z2A, Z2B, Z2C, & Z2D  
Second Floor Plan

**Sheet Number:**

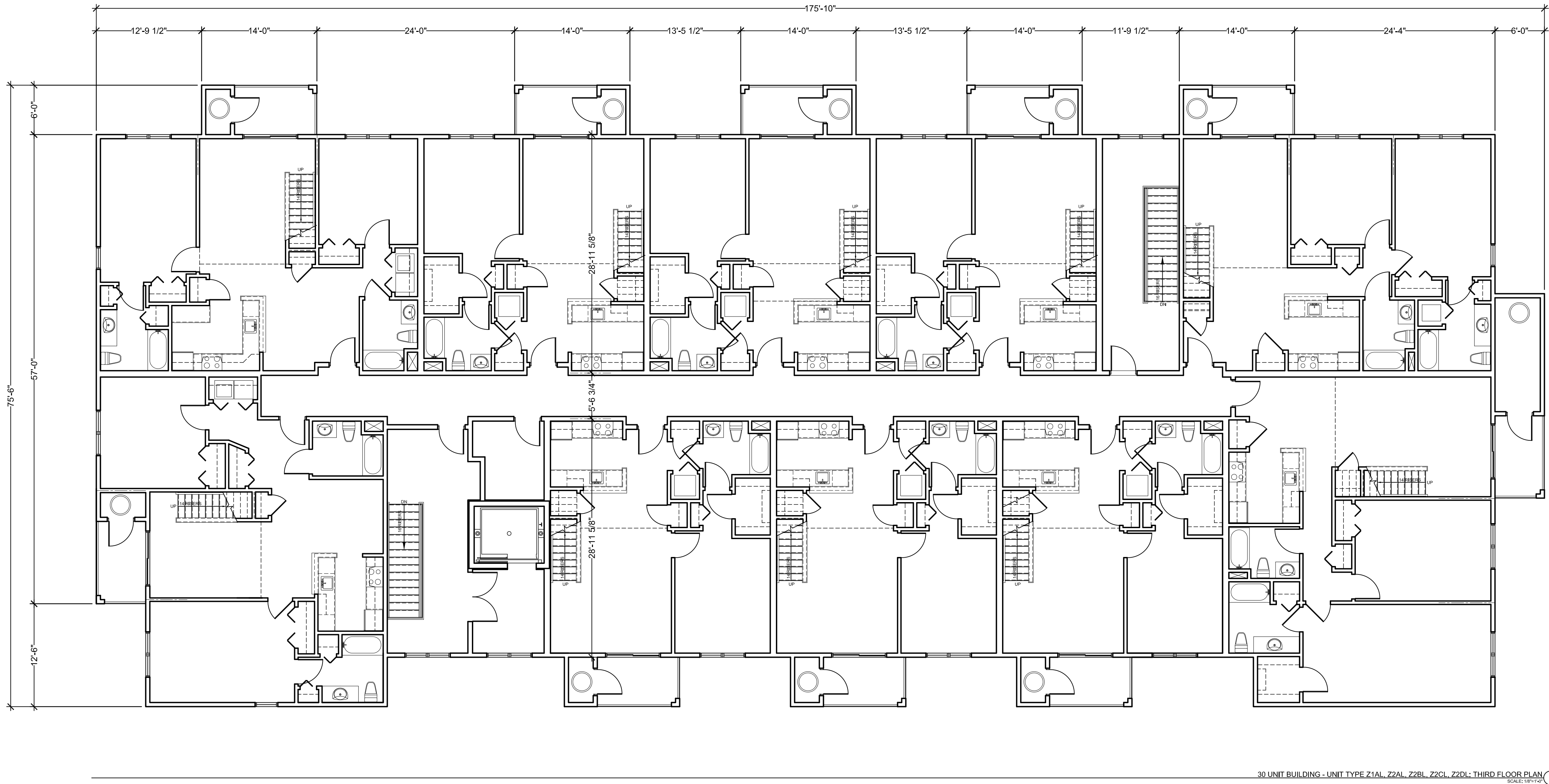
**A.102**



200 Ayer Road, Harvard, MA 01451  
Tel: (978) 456-2800 Fax: (978) 456-2801  
www.maugel.com

THESE DOCUMENTS AND ALL IDEAS, ARRANGEMENTS, DESIGNS AND PLANS INDICATED THEREON OR REPRESENTED THEREON ARE OWNED BY AND REMAIN THE PROPERTY OF MAUGEL ARCHITECTS, INC. AND NO PART THEREOF SHALL BE REPRODUCED OR TRANSMITTED IN ANY FORM OR BY ANY MEANS, ELECTRONIC OR MECHANICAL, INCLUDING PHOTOCOPYING, RECORDING, OR BY ANY INFORMATION STORAGE AND RETRIEVAL SYSTEM, WITHOUT THE WRITTEN PERMISSION OF MAUGEL ARCHITECTS, INC.





Notes:

**ARCHITECTURAL FLOOR PLAN REFERENCE SYS.**

INTERIOR DETAIL SYMBOL  
WALL TYPE SYMBOL  
ROOM SYMBOL  
DOOR SYMBOL  
PLAN DETAIL SYMBOL

**PARTITION LEGEND**

|          |  |
|----------|--|
| [Symbol] | EXISTING WALL, VERIFY CONSTRUCTION IN FIELD      |
| [Symbol] | BRICK VENEER EXTERIOR WALL WITH MTL STUD BACK-UP |
| [Symbol] | BRICK VENEER EXTERIOR WALL WITH MASONRY BACK-UP  |
| [Symbol] | EIFS EXTERIOR WALL                               |
| [Symbol] | CMU WALL   |
| [Symbol] | INTERIOR PARTITION                               |
| [Symbol] | NEW INTERIOR PARTITION                           |

**PARTITION NOTES**

1. ALL WALLS NOT KEYED IN BY WALL TYPE DESIGNATION TO BE PARTITION "P1", TYP

**DIMENSIONING NOTES**

1. EXTERIOR MASONRY WALLS ARE DIMENSIONED TO THE FACE OF MASONRY  
2. INTERIOR MASONRY WALLS ARE DIMENSIONED TO THE FACE OF MASONRY  
3. WOOD FRAMED EXTERIOR WALLS ARE DIMENSIONED TO THE EXTERIOR FACE OF STUD  
4. INTERIOR PARTITIONS ARE DIMENSIONED TO THE CENTERLINE, UON

**FIRE EXTINGUISHER SCHEDULE**

|      |  |
|------|--|
| FE-1 | SURFACE MOUNT FIRE EXTINGUISHER, JI INDUSTRIES COSMIX 5X   |
| FE-2 | RECESSED FIRE EXTINGUISHER - 1-1/2" TRIM, JI INDUSTRIES COSMIX 5X, CABINET #1826G17, MILL FINISH |

Key Plan:

Architect's Stamp:

**Project:**  
**Fifteen Great Road II LLC**  
15 Great Road,  
Littleton, MA.

**Client:**  
Omni Properties, LLC  
200 Baker Ave, Suite 303  
Concord, MA 01742  
Tel: (978) 369-4884

**Project #:** 12023  
**Scale:** As Noted

|               |              |
|---------------|--------------|
| <b>Issue:</b> | <b>Date:</b> |
| Progress      | 4/30/2012    |

| Revisions: | Date: |
|------------|-------|
|            |       |
|            |       |
|            |       |
|            |       |
|            |       |
|            |       |
|            |       |

**Drawing Title:**  
Unit Type Z1AL, Z2AL, Z2BL, Z2CL, & Z2DL  
Third Floor Plan

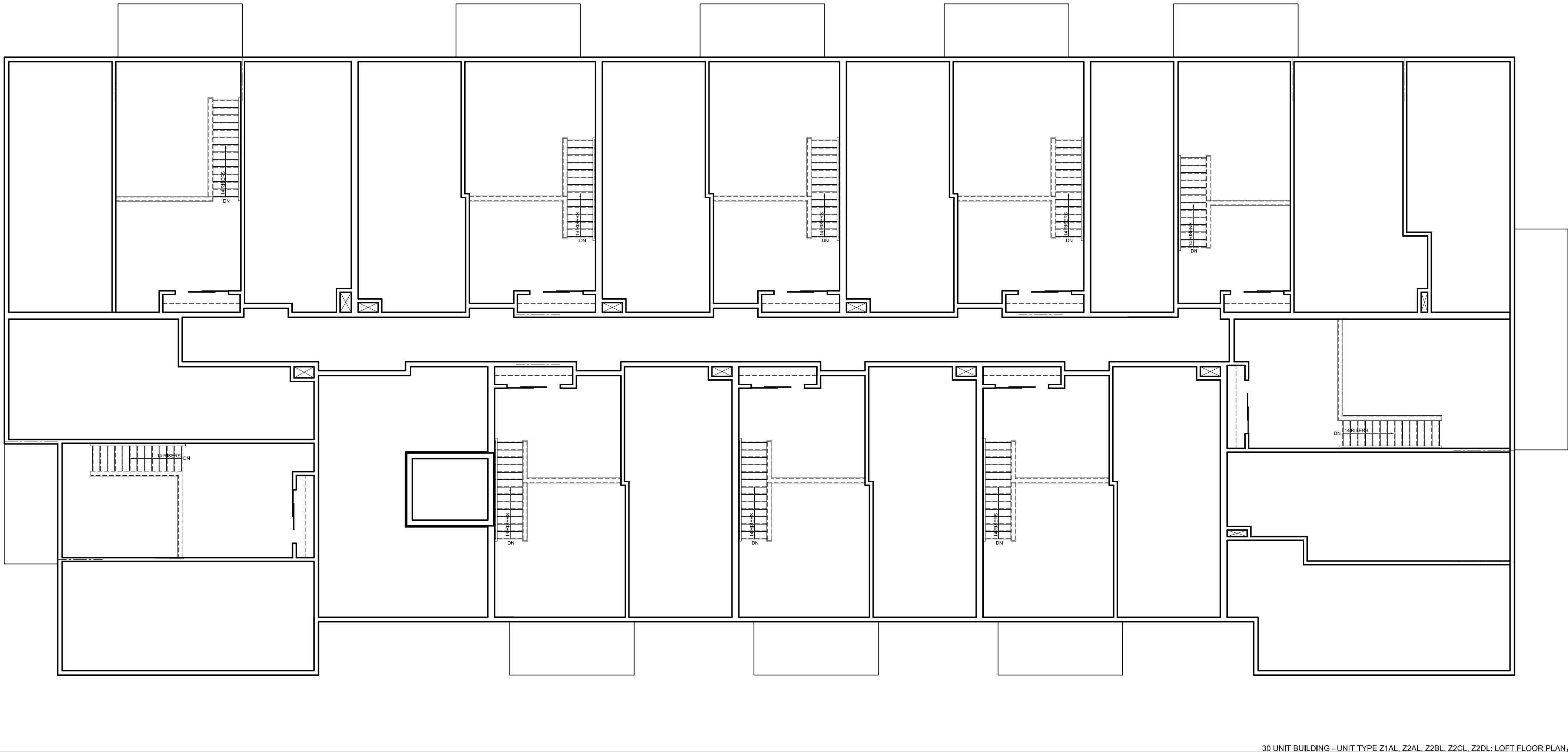
**Sheet Number:**

**A.103**

**MAUGEL ARCHITECTS INC**

200 Ayer Road, Harvard, MA 01451  
Tel: (978) 456-2800 Fax: (978) 456-2801  
www.maugel.com

THESE DOCUMENTS AND ALL IDEAS, ARRANGEMENTS, DESIGNS AND PLANS INDICATED THEREON OR REPRESENTED THEREON ARE OWNED BY AND REMAIN THE PROPERTY OF MAUGEL ARCHITECTS, INC. AND NO PART THEREOF SHALL BE REPRODUCED OR TRANSMITTED IN ANY FORM OR BY ANY MEANS, ELECTRONIC OR MECHANICAL, INCLUDING PHOTOCOPYING, RECORDING, OR BY ANY INFORMATION STORAGE AND RETRIEVAL SYSTEM, WITHOUT THE WRITTEN PERMISSION OF MAUGEL ARCHITECTS, INC.



Notes:

**ARCHITECTURAL FLOOR PLAN REFERENCE SYS.**

**PARTITION LEGEND**

|          |  |
|----------|--|
| [Symbol] | EXISTING WALL, VERIFY CONSTRUCTION IN FIELD      |
| [Symbol] | BRICK VENEER EXTERIOR WALL WITH MTL STUD BACK-UP |
| [Symbol] | BRICK VENEER EXTERIOR WALL WITH MASONRY BACK-UP  |
| [Symbol] | EIFS EXTERIOR WALL                               |
| [Symbol] | CMU WALL   |
| [Symbol] | INTERIOR PARTITION                               |
| [Symbol] | NEW INTERIOR PARTITION                           |

**PARTITION NOTES**

1. ALL WALLS NOT KEYED IN BY WALL TYPE DESIGNATION TO BE PARTITION "P1", TYP

**DIMENSIONING NOTES**

1. EXTERIOR MASONRY WALLS ARE DIMENSIONED TO THE FACE OF MASONRY  
2. INTERIOR MASONRY WALLS ARE DIMENSIONED TO THE FACE OF MASONRY  
3. WOOD FRAMED EXTERIOR WALLS ARE DIMENSIONED TO THE EXTERIOR FACE OF STUD  
4. INTERIOR PARTITIONS ARE DIMENSIONED TO THE CENTERLINE, UON

**FIRE EXTINGUISHER SCHEDULE**

|      |   |
|------|---|
| FE-1 | SURFACE MOUNT FIRE EXTINGUISHER, JLI INDUSTRIES COSMIX 5X   |
| FE-2 | RECESSED FIRE EXTINGUISHER - 1-1/2" TRIM, JLI INDUSTRIES COSMIX 5X, CABINET #1826G17, MILL FINISH |

Key Plan:

Architect's Stamp:

**Project:**  
**Fifteen Great Road II LLC**  
15 Great Road,  
Littleton, MA.

**Client:**  
Omni Properties, LLC  
200 Baker Ave, Suite 303  
Concord, MA 01742  
Tel: (978) 369-4884

**Project #:** 12023  
**Scale:** As Noted

|               |              |
|---------------|--------------|
| <b>Issue:</b> | <b>Date:</b> |
| Progress      | 4/30/2012    |

|                   |              |
|-------------------|--------------|
| <b>Revisions:</b> | <b>Date:</b> |
|                   |              |
|                   |              |
|                   |              |
|                   |              |
|                   |              |
|                   |              |

**Drawing Title:**  
Unit Type Z1AL, Z2AL, Z2BL, Z2CL, & Z2DL  
Loft Floor Plan

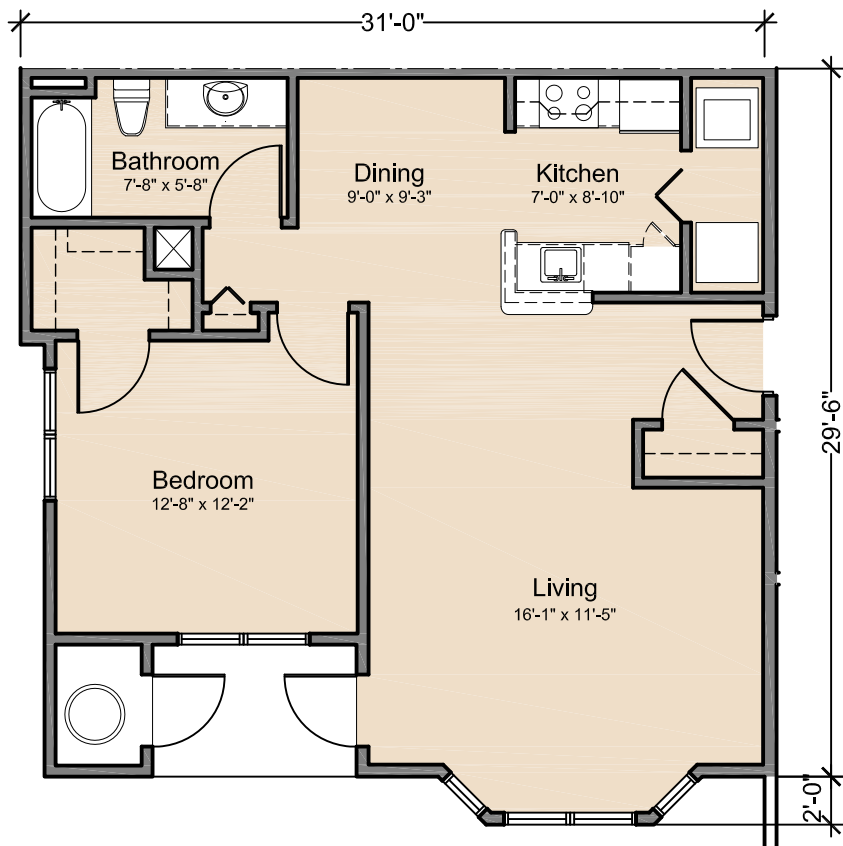
**Sheet Number:**

**A.104**

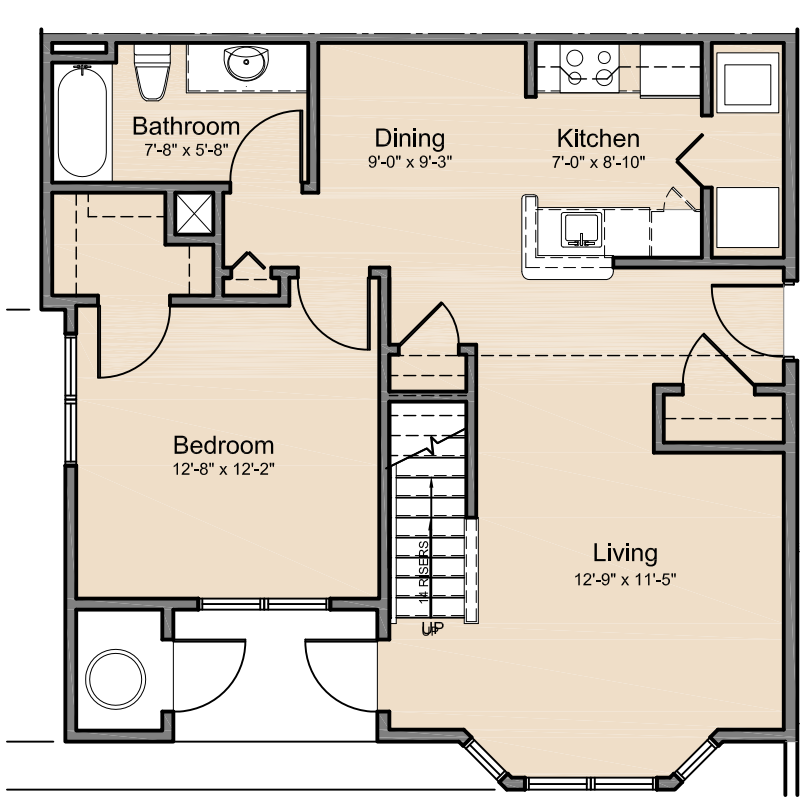


200 Ayer Road, Harvard, MA 01451  
Tel: (978) 456-2800 Fax: (978) 456-2801  
www.maugel.com

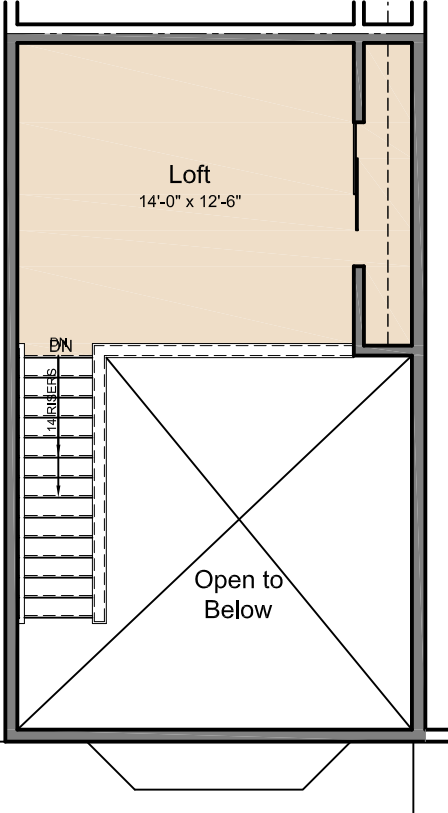
THESE DOCUMENTS AND ALL IDEAS, ARRANGEMENTS, DESIGNS AND PLANS INDICATED THEREON OR REPRESENTED THEREBY ARE OWNED BY AND REMAIN THE PROPERTY OF MAUGEL ARCHITECTS, INC. AND NO PART THEREOF SHALL BE REPRODUCED OR TRANSMITTED IN ANY FORM OR BY ANY MEANS, ELECTRONIC OR MECHANICAL, INCLUDING PHOTOCOPYING, RECORDING, OR BY ANY INFORMATION STORAGE AND RETRIEVAL SYSTEM, WITHOUT THE WRITTEN PERMISSION OF MAUGEL ARCHITECTS, INC.



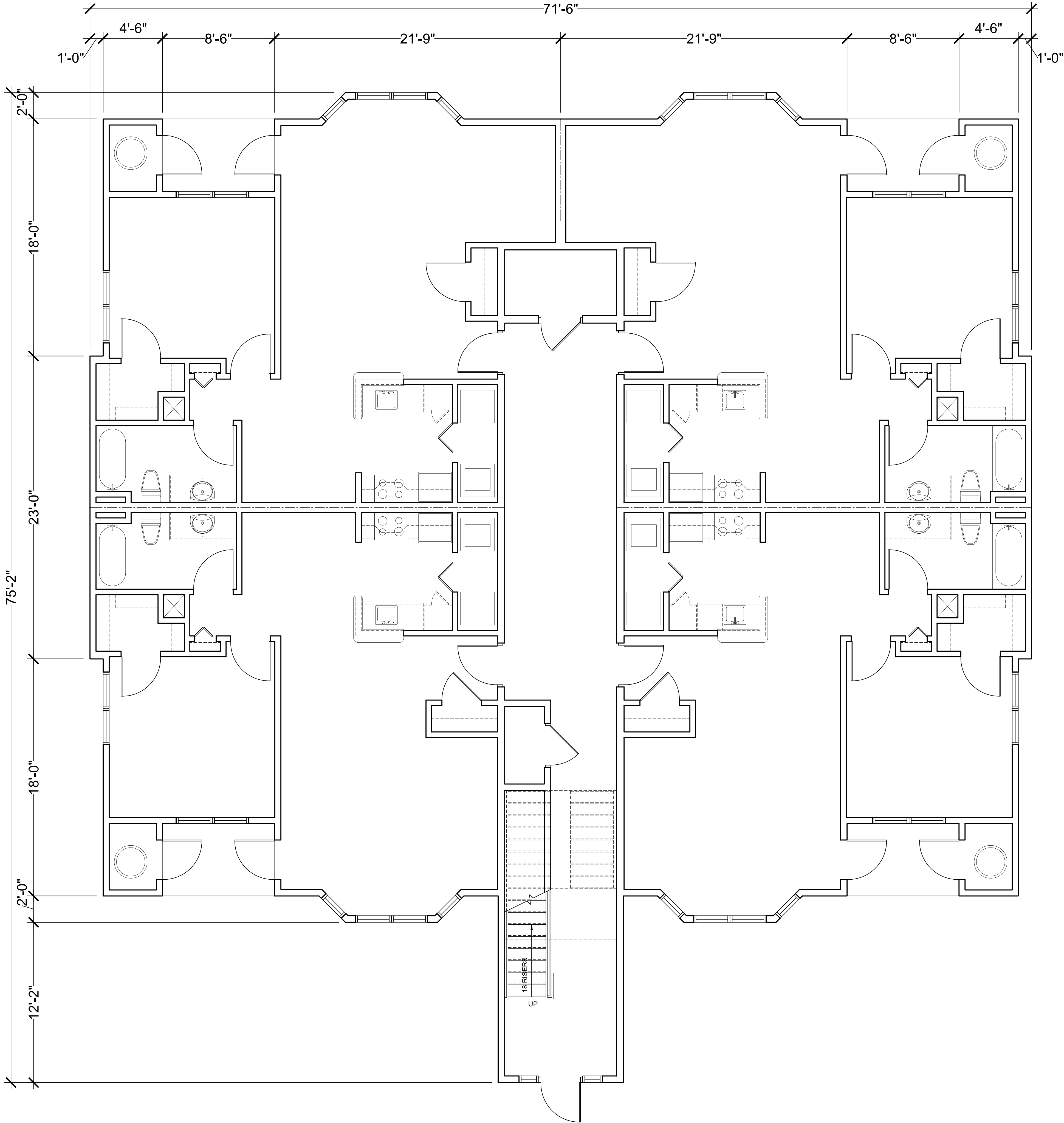
First Floor Plan



Third Floor Plan



Loft Floor Plan



12 UNIT BUILDING - UNIT TYPE W1, X1, & Y1: FIRST FLOOR PLAN 1  
SCALE: 1/4"=1'-0"

Notes:

**ARCHITECTURAL FLOOR PLAN REFERENCE SYS.**

| PARTITION LEGEND |  |
|------------------|--|
|                  | EXISTING WALL, VERIFY CONSTRUCTION IN FIELD      |
|                  | BRICK VENEER EXTERIOR WALL WITH MTL STUD BACK-UP |
|                  | BRICK VENEER EXTERIOR WALL WITH MASONRY BACK-UP  |
|                  | EIFS EXTERIOR WALL                               |
|                  | CMU WALL   |
|                  | INTERIOR PARTITION                               |
|                  | NEW INTERIOR PARTITION                           |

**PARTITION NOTES**

1. ALL WALLS NOT KEYED IN BY WALL TYPE DESIGNATION TO BE PARTITION "P1", TYP

- DIMENSIONING NOTES**
1. EXTERIOR MASONRY WALLS ARE DIMENSIONED TO THE FACE OF MASONRY
  2. INTERIOR MASONRY WALLS ARE DIMENSIONED TO THE FACE OF MASONRY
  3. WOOD FRAMED EXTERIOR WALLS ARE DIMENSIONED TO THE EXTERIOR FACE OF STUD
  4. INTERIOR PARTITIONS ARE DIMENSIONED TO THE CENTERLINE, UON

| FIRE EXTINGUISHER SCHEDULE |  |
|----------------------------|--|
| FE-1                       | SURFACE MOUNT FIRE EXTINGUISHER, JL INDUSTRIES COSMIX 5X   |
| FE-2                       | RECESSED FIRE EXTINGUISHER - 1-1/2" TRIM, JL INDUSTRIES COSMIX 5X, CABINET #1826G17, MILL FINISH |

Key Plan:

Architect's Stamp:

**Project:**  
**Fifteen Great Road II LLC**  
15 Great Road,  
Littleton, MA.  
**Client:**  
Omni Properties, LLC  
200 Baker Ave, Suite 303  
Concord, MA 01742  
Tel: (978) 369-4884  
**Project #:** 12023  
**Scale:** As Noted

|               |              |
|---------------|--------------|
| <b>Issue:</b> | <b>Date:</b> |
| Progress      | 4/30/2012    |

|                   |              |
|-------------------|--------------|
| <b>Revisions:</b> | <b>Date:</b> |
|                   |              |
|                   |              |
|                   |              |
|                   |              |
|                   |              |
|                   |              |

**Drawing Title:**  
Unit Type W1, X1, & Y1  
First Floor Plan  
**Sheet Number:**

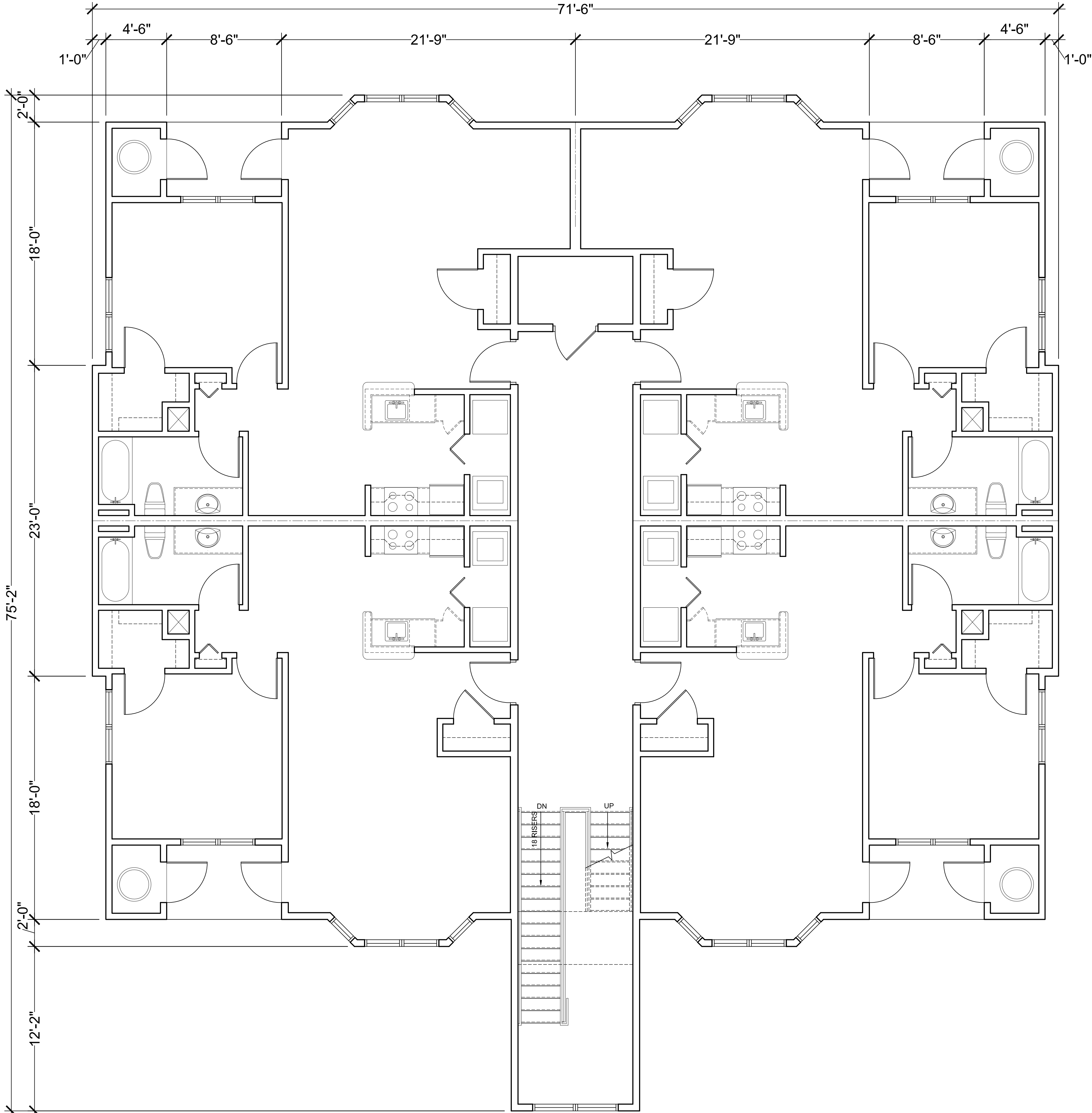
**A.101**

**MAUGEL ARCHITECTS INC.**

200 Ayer Road, Harvard, MA 01451  
Tel: (978) 456-2800 Fax: (978) 456-2801  
www.maugel.com

THESE DOCUMENTS AND ALL IDEAS, ARRANGEMENTS, DESIGNS AND PLANS INDICATED THEREON OR REPRESENTED THEREON ARE OWNED BY AND REMAIN THE PROPERTY OF MAUGEL ARCHITECTS, INC. AND NO PART THEREOF SHALL BE REPRODUCED OR TRANSMITTED IN ANY FORM OR BY ANY MEANS, ELECTRONIC OR MECHANICAL, INCLUDING PHOTOCOPYING, RECORDING, OR BY ANY INFORMATION STORAGE AND RETRIEVAL SYSTEM, WITHOUT THE WRITTEN PERMISSION OF MAUGEL ARCHITECTS, INC.





12 UNIT BUILDING - UNIT TYPE W1, X1, & Y1: SECOND FLOOR PLAN 1  
SCALE: 1/4"=1'-0"

Notes:

**ARCHITECTURAL FLOOR PLAN REFERENCE SYS.**

**PARTITION LEGEND**

|          |  |
|----------|--|
| [Symbol] | EXISTING WALL, VERIFY CONSTRUCTION IN FIELD      |
| [Symbol] | BRICK VENEER EXTERIOR WALL WITH MTL STUD BACK-UP |
| [Symbol] | BRICK VENEER EXTERIOR WALL WITH MASONRY BACK-UP  |
| [Symbol] | EIFS EXTERIOR WALL                               |
| [Symbol] | CMU WALL   |
| [Symbol] | INTERIOR PARTITION                               |
| [Symbol] | NEW INTERIOR PARTITION                           |

**PARTITION NOTES**

1. ALL WALLS NOT KEYED IN BY WALL TYPE DESIGNATION TO BE PARTITION "P1", TYP

**DIMENSIONING NOTES**

1. EXTERIOR MASONRY WALLS ARE DIMENSIONED TO THE FACE OF MASONRY  
2. INTERIOR MASONRY WALLS ARE DIMENSIONED TO THE FACE OF MASONRY  
3. WOOD FRAMED EXTERIOR WALLS ARE DIMENSIONED TO THE EXTERIOR FACE OF STUD  
4. INTERIOR PARTITIONS ARE DIMENSIONED TO THE CENTERLINE, UON

**FIRE EXTINGUISHER SCHEDULE**

|      |   |
|------|---|
| FE-1 | SURFACE MOUNT FIRE EXTINGUISHER, J.L INDUSTRIES COSMIX 5X   |
| FE-2 | RECESSED FIRE EXTINGUISHER - 1-1/2" TRIM, J.L INDUSTRIES COSMIX 5X, CABINET #1826G17, MILL FINISH |

Key Plan:

Architect's Stamp:

**Project:**  
**Fifteen Great Road II LLC**  
15 Great Road,  
Littleton, MA.  
**Client:**  
Omni Properties, LLC  
200 Baker Ave, Suite 303  
Concord, MA 01742  
Tel: (978) 369-4884  
**Project #:** 12023  
**Scale:** As Noted

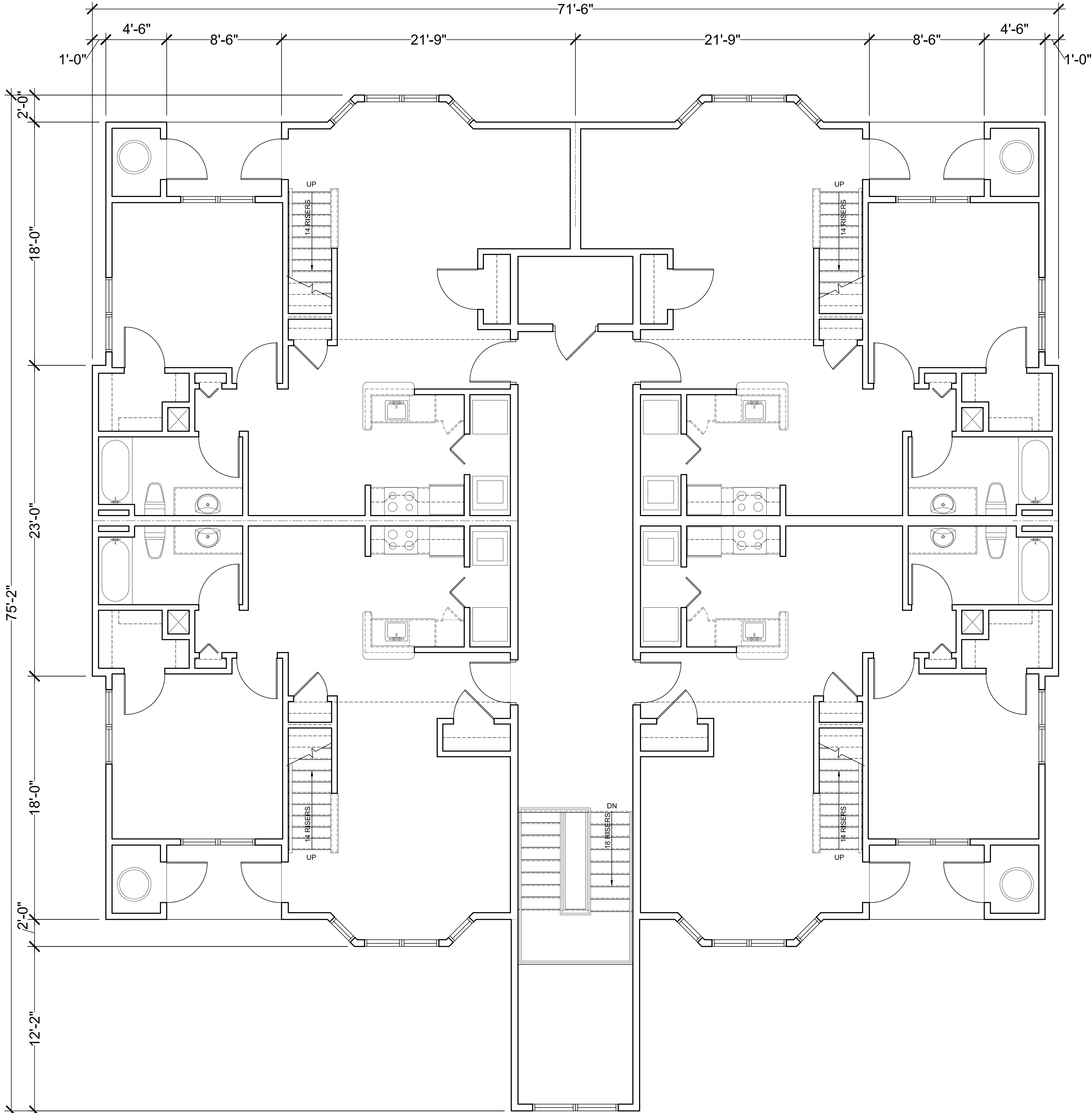
|               |              |
|---------------|--------------|
| <b>Issue:</b> | <b>Date:</b> |
| Progress      | 4/30/2012    |

|                   |              |
|-------------------|--------------|
| <b>Revisions:</b> | <b>Date:</b> |
|                   |              |
|                   |              |
|                   |              |
|                   |              |
|                   |              |

**Drawing Title:**  
Unit Type W1, X1, & Y1  
Second Floor Plan  
**Sheet Number:**  
**A.102**  
**MAUGEL ARCHITECTS INC.**

200 Ayer Road, Harvard, MA 01451  
Tel: (978) 456-2800 Fax: (978) 456-2801  
www.maugel.com

THESE DOCUMENTS AND ALL IDEAS, ARRANGEMENTS, DESIGNS AND PLANS INDICATED THEREON OR REPRESENTED THEREIN ARE OWNED BY AND REMAIN THE PROPERTY OF MAUGEL ARCHITECTS, INC. AND NO PART THEREOF SHALL BE REPRODUCED OR TRANSMITTED IN ANY FORM OR BY ANY MEANS, ELECTRONIC OR MECHANICAL, WITHOUT SPECIFIC WRITTEN PERMISSION FROM MAUGEL ARCHITECTS, INC.



Notes:

**ARCHITECTURAL FLOOR PLAN REFERENCE SYS.**

INTERIOR DETAIL SYMBOL  
WALL TYPE SYMBOL  
ROOM SYMBOL  
DOOR SYMBOL  
PLAN DETAIL SYMBOL

**PARTITION LEGEND**

|          |  |
|----------|--|
| [Symbol] | EXISTING WALL, VERIFY CONSTRUCTION IN FIELD      |
| [Symbol] | BRICK VENEER EXTERIOR WALL WITH MTL STUD BACK-UP |
| [Symbol] | BRICK VENEER EXTERIOR WALL WITH MASONRY BACK-UP  |
| [Symbol] | EIFS EXTERIOR WALL                               |
| [Symbol] | CMU WALL   |
| [Symbol] | INTERIOR PARTITION                               |
| [Symbol] | NEW INTERIOR PARTITION                           |

**PARTITION NOTES**

1. ALL WALLS NOT KEYED IN BY WALL TYPE DESIGNATION TO BE PARTITION "P1", TYP

**DIMENSIONING NOTES**

1. EXTERIOR MASONRY WALLS ARE DIMENSIONED TO THE FACE OF MASONRY  
2. INTERIOR MASONRY WALLS ARE DIMENSIONED TO THE FACE OF MASONRY  
3. WOOD FRAMED EXTERIOR WALLS ARE DIMENSIONED TO THE EXTERIOR FACE OF STUD  
4. INTERIOR PARTITIONS ARE DIMENSIONED TO THE CENTERLINE, UON

**FIRE EXTINGUISHER SCHEDULE**

|      |  |
|------|--|
| FE-1 | SURFACE MOUNT FIRE EXTINGUISHER, JL INDUSTRIES COSMIX 5X   |
| FE-2 | RECESSED FIRE EXTINGUISHER - 1-1/2" TRIM, JL INDUSTRIES COSMIC 5X, CABINET #1826G17, MILL FINISH |

Key Plan:

Architect's Stamp:

**Project:**  
**Fifteen Great Road II LLC**  
15 Great Road,  
Littleton, MA.  
**Client:**  
Omni Properties, LLC  
200 Baker Ave, Suite 303  
Concord, MA 01742  
Tel: (978) 369-4884  
**Project #:** 12023  
**Scale:** As Noted

**Issue:** Progress  
**Date:** 4/30/2012

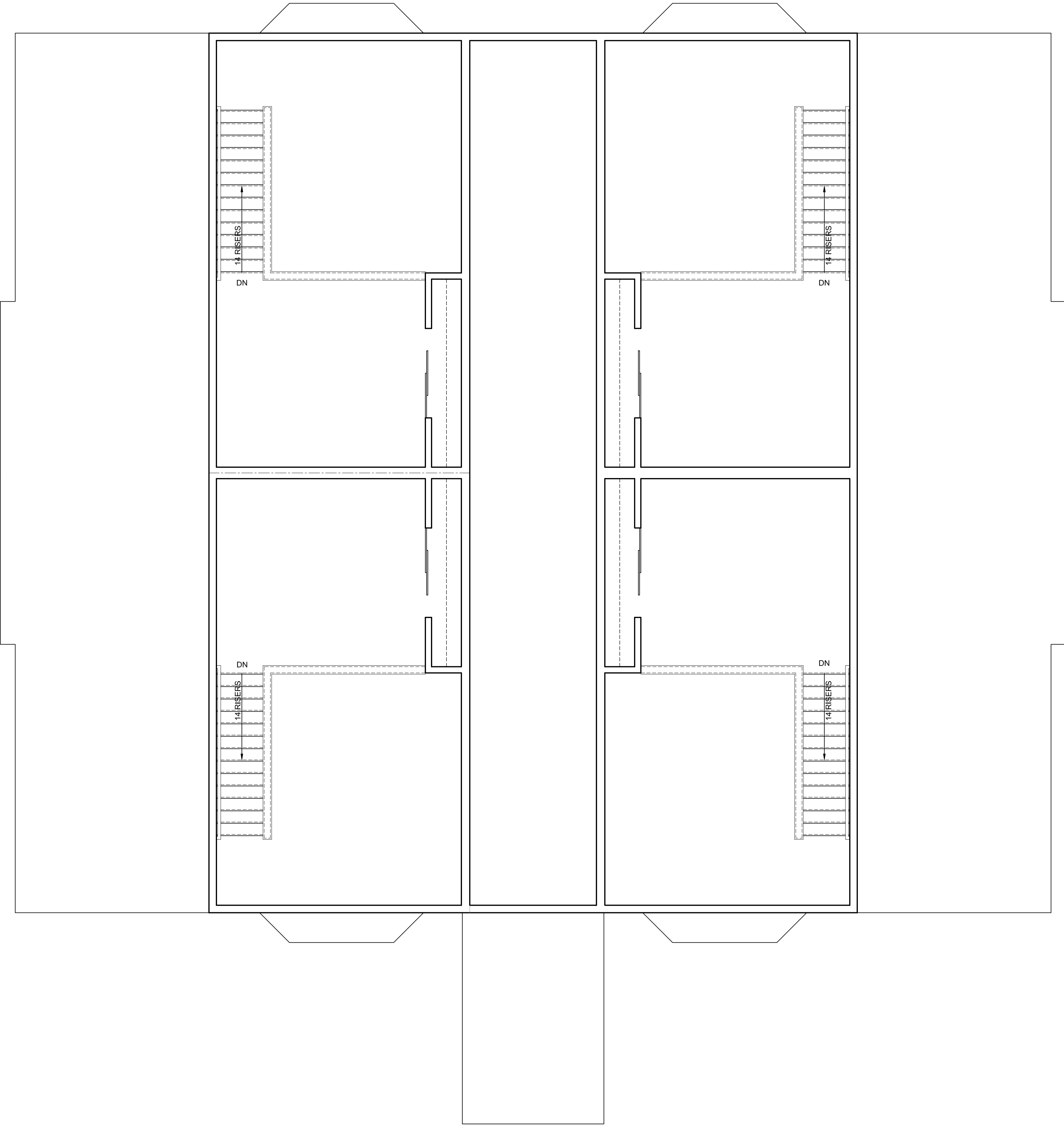
| Revisions: | Date: |
|------------|-------|
|            |       |
|            |       |
|            |       |
|            |       |
|            |       |
|            |       |

**Drawing Title:**  
Unit Type W1L, X1L, & Y1L  
Third Floor Plan  
**Sheet Number:**

**A.103**  
MAUGEL ARCHITECTS INC. MA

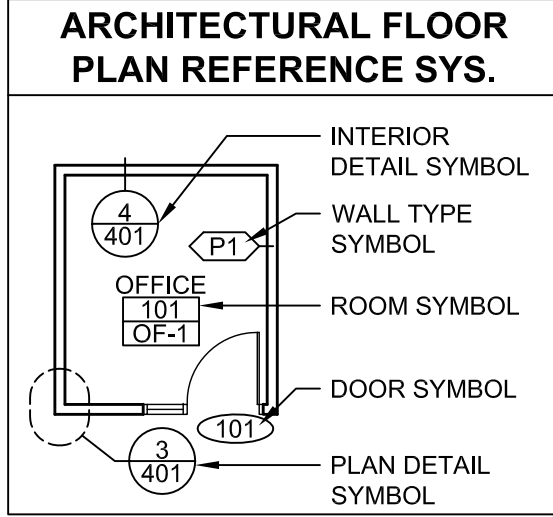
200 Ayer Road, Harvard, MA 01451  
Tel: (978) 456-2800 Fax: (978) 456-2801  
www.maugel.com

THESE DOCUMENTS AND ALL IDEAS, ARRANGEMENTS, DESIGNS AND PLANS INDICATED THEREON OR REPRESENTED THEREIN ARE OWNED BY AND REMAIN THE PROPERTY OF MAUGEL ARCHITECTS, INC. AND NO PART THEREOF SHALL BE REPRODUCED OR TRANSMITTED IN ANY FORM OR BY ANY MEANS, ELECTRONIC OR MECHANICAL, INCLUDING PHOTOCOPYING, RECORDING, OR BY ANY INFORMATION STORAGE AND RETRIEVAL SYSTEM, WITHOUT THE WRITTEN PERMISSION OF MAUGEL ARCHITECTS, INC.



12 UNIT BUILDING - UNIT TYPE W1L, X1L, & Y1L: LOFT PLAN  
SCALE: 1/4"=1'-0" 1

Notes:



| PARTITION LEGEND                                 |  |
|--|--|
| EXISTING WALL, VERIFY CONSTRUCTION IN FIELD      |  |
| BRICK VENEER EXTERIOR WALL WITH MTL STUD BACK-UP |  |
| BRICK VENEER EXTERIOR WALL WITH MASONRY BACK-UP  |  |
| EIFS EXTERIOR WALL                               |  |
| CMU WALL   |  |
| INTERIOR PARTITION                               |  |
| NEW INTERIOR PARTITION                           |  |

| PARTITION NOTES  |  |
|--|--|
| 1. ALL WALLS NOT KEYED IN BY WALL TYPE DESIGNATION TO BE PARTITION "P1", TYP |  |

| DIMENSIONING NOTES   |  |
|--|--|
| 1. EXTERIOR MASONRY WALLS ARE DIMENSIONED TO THE FACE OF MASONRY           |  |
| 2. INTERIOR MASONRY WALLS ARE DIMENSIONED TO THE FACE OF MASONRY           |  |
| 3. WOOD FRAMED EXTERIOR WALLS ARE DIMENSIONED TO THE EXTERIOR FACE OF STUD |  |
| 4. INTERIOR PARTITIONS ARE DIMENSIONED TO THE CENTERLINE, UON              |  |

| FIRE EXTINGUISHER SCHEDULE |  |
|----------------------------|--|
| FE-1                       | SURFACE MOUNT FIRE EXTINGUISHER, JL INDUSTRIES COSMIX 5X   |
| FE-2                       | RECESSED FIRE EXTINGUISHER - 1-1/2" TRIM, JL INDUSTRIES COSMIC 5X, CABINET #1826G17, MILL FINISH |

Key Plan:

Architect's Stamp:

Project:  
**Fifteen Great Road II LLC**  
15 Great Road,  
Littleton, MA.  
Client:  
Omni Properties, LLC  
200 Baker Ave, Suite 303  
Concord, MA 01742  
Tel: (978) 369-4884  
Project #: 12023  
Scale: As Noted

|          |           |
|----------|-----------|
| Issue:   | Date:     |
| Progress | 4/30/2012 |

|            |       |
|------------|-------|
| Revisions: | Date: |
|            |       |
|            |       |
|            |       |
|            |       |
|            |       |
|            |       |

Drawing Title:  
Unit Type W1L, X1L, & Y1L  
Loft Floor Plan  
Sheet Number:

**A.104**  
MAUGEL ARCHITECTS INC. MA

200 Ayer Road, Harvard, MA 01451  
Tel: (978) 456-2800 Fax: (978) 456-2801  
www.maugel.com

THESE DOCUMENTS AND ALL IDEAS, ARRANGEMENTS, DESIGNS AND PLANS INDICATED THEREON OR REPRESENTED THEREBY ARE OWNED BY AND REMAIN THE PROPERTY OF MAUGEL ARCHITECTS, INC. AND NO PART THEREOF SHALL BE REPRODUCED OR USED IN ANY MANNER WITHOUT THE WRITTEN PERMISSION OF MAUGEL ARCHITECTS, INC.