



BUILDING TYPE TH3A - LEFT ELEVATION 1  
SCALE: 1/8"=1'-0"



BUILDING TYPE TH3A - REAR ELEVATION 2  
SCALE: 1/8"=1'-0"

Notes:

EXTERIOR WINDOW  
FRAMING & GLAZING

GENERAL WINDOW NOTES:  
1. ALL DIMENSIONS SHOWN ON ARCHITECTURAL DRAWINGS ARE ROUGH OPENINGS. SHOP DRAWINGS SHOULD REFLECT APPROPRIATE FRAME SIZES INCLUDING JOINT SIZES PER MANUFACTURERS SPECIFICATIONS.  
2. G.C./SUB-CONTRACTOR TO FIELD VERIFY ALL OPENINGS PRIOR TO FABRICATION OF WINDOWS.  
3. SUBMIT COLOR SAMPLES FOR FRAMES AND GLAZING AS PART OF THE SHOP DRAWING PROCESS.

STOREFRONT SYTEM:  
1. KAWNEER 451T - FRONT GLAZED  
2. FRAME COLOR - CLEAR ANODIZED ALUMINUM

CURTAINWALL SYSTEM:  
1. KAWNEER 1600 SYSTEM - 7-1/2" FRAME DEPTH  
2. STEEL REINFORCING TO BY FABRICTOR DURING SHOP DRAWINGS AS REQUIRED TO MEET MANUFACTURE SPECIFICATIONS AND WIND LOAD REQUIREMENTS.  
3. FRAME COLOR - CLEAR ANODIZED ALUMINUM.

STOREFRONT & CURTAINWALL ENTRANCES:  
1. DOORS: KAWNEER 350 MEDIUM STILE  
2. PANIC PUSH BAR (DOUBLE DOORS): DOOR-O-MATIC #1690 CONCEALED VERTICAL ROD  
3. PANIC PUSH BAR (SINGLE DOOR): DOOR-O-MATIC #1790 RIM EXIT DEVICE  
4. PUSH BAR AT NON-LATCHING DOORS: STYLE CO-12/CPH  
5. PULLS: STYLE CO-12  
6. CLOSER: NORTON 1605 BC, PARALLEL ARM MOUNTING W/ HEAVY DUTY ARM & HOLD OPEN  
7. THRESHOLD: ALUMINUM THRESHOLD 1/2" MAX HEIGHT (ADA)

GLAZING:  
1. ALL GLAZING TO BE LOW E-4  
2. PROVIDE TEMPERED GLAZING IN ALL AREA REQUIRED BY CODE.  
3. GLAZING COLORS:  
G1: 1" INSULATED CLEAR ECLIPSE ADVANTAGE (LOW E)  
-1/4" CLEAR ECLIPSE ADVANTAGE (LOW E SURFACE #2)  
-1/2" AIR SPACE  
-1/4" CLEAR ANNEALED  
G2: 1" INSULATED CLEAR ECLIPSE ADVANTAGE (LOW E) SPANDREL  
-1/4" CLEAR ECLIPSE ADVANTAGE (LOW E SURFACE #2)  
-1/2" AIR SPACE  
-1/4" CLEAR ANNEALED (SPANDREL COATING SURFACE #4)

Key Plan:

Architect's Stamp:

Project:  
**Fifteen Great Road II LLC**  
15 Great Road,  
Littleton, MA.

Client:  
Omni Properties, LLC  
200 Baker Ave, Suite 303  
Concord, MA 01742  
Tel: (978) 369-4884

Project #: 12023  
Scale: As Noted

Issue: Progress  
Date: 5/8/2012

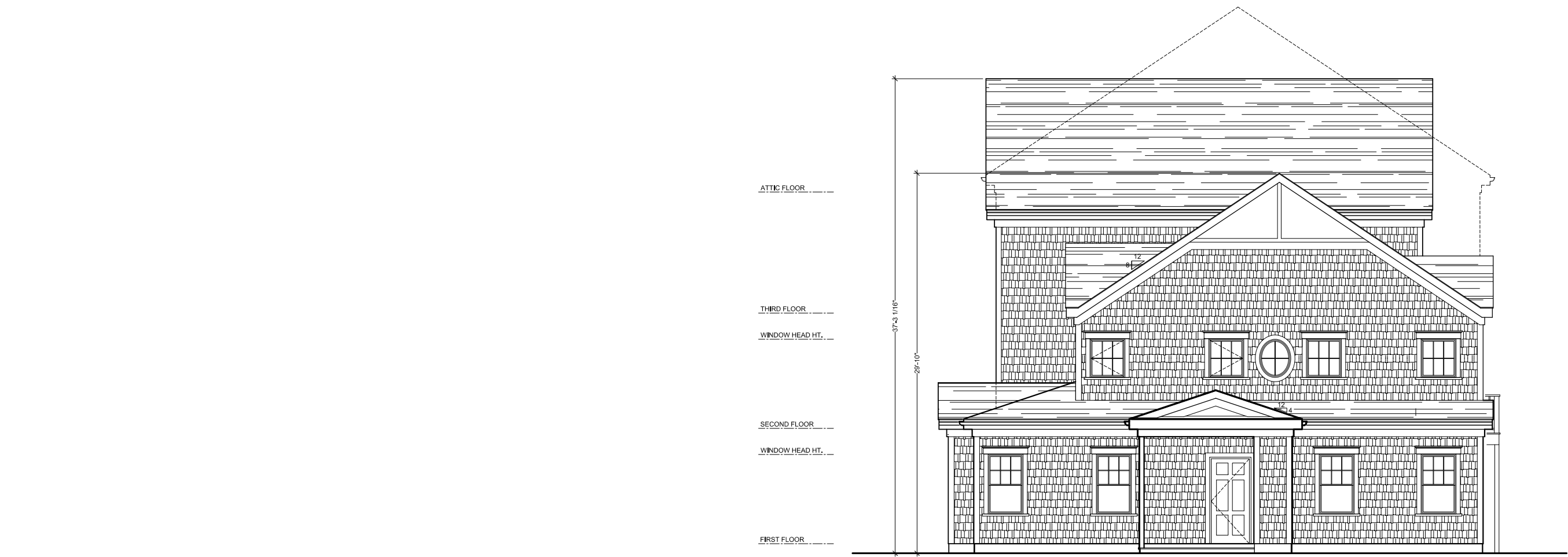
Revisions: Date:

Drawing Title:  
Building Type TH3A  
Exterior Elevations

Sheet Number:  
**A.202**

200 Ayer Road, Harvard, MA 01451  
Tel: (978) 456-2800 Fax: (978) 456-2801  
www.jmaugel.com

THESE DOCUMENTS AND ALL IDEAS, ARRANGEMENTS, DESIGN AND PLANS, INDICATED THEREON OR REPRESENTED THEREBY ARE OWNED BY AND REMAIN THE PROPERTY OF JMAUGEL ARCHITECTS, INC. AND NO PART THEREOF SHALL BE UTILIZED IN ANY PHYSICAL FORM OR CONSTRUCTION OR REPRODUCTION WITHOUT THE EXPRESS WRITTEN PERMISSION OF JMAUGEL ARCHITECTS, INC.



BUILDING TYPE TH3A - FRONT ELEVATION  
SCALE: 1/8"=1'-0"

Notes:

**EXTERIOR WINDOW FRAMING & GLAZING**

GENERAL WINDOW NOTES:

1. ALL DIMENSIONS SHOWN ON ARCHITECTURAL DRAWINGS ARE ROUGH OPENINGS. SHOP DRAWINGS SHOULD REFLECT APPROPRIATE FRAME SIZES INCLUDING JOINT SIZES PER MANUFACTURERS SPECIFICATIONS.
2. G.C./SUB-CONTRACTOR TO FIELD VERIFY ALL OPENINGS PRIOR TO FABRICATION OF WINDOWS.
3. SUBMIT COLOR SAMPLES FOR FRAMES AND GLAZING AS PART OF THE SHOP DRAWING PROCESS.

STOREFRONT SYTEM:

1. KAWNEER 451T - FRONT GLAZED
2. FRAME COLOR - CLEAR ANODIZED ALUMINUM

CURTAINWALL SYSTEM:

1. KAWNEER 1600 SYSTEM - 7-1/2" FRAME DEPTH
2. STEEL REINFORCING TO BY FABRICTOR DURING SHOP DRAWINGS AS REQUIRED TO MEET MANUFACTURE SPECIFICATIONS AND WIND LOAD REQUIREMENTS.
3. FRAME COLOR - CLEAR ANODIZED ALUMINUM.

STOREFRONT & CURTAINWALL ENTRANCES:

1. DOORS: KAWNEER 350 MEDIUM STILE
2. PANIC PUSH BAR (DOUBLE DOORS): DOOR-O-MATIC #1690 CONCEALED VERTICAL ROD
3. PANIC PUSH BAR (SINGLE DOOR): DOOR-O-MATIC #1790 RM EXIT DEVICE
4. PUSH BAR AT NON-LATCHING DOORS: STYLE CO-12/CPH
5. PULLS: STYLE CO-12
6. CLOSER: NORTON 1605 BC, PARALLEL ARM MOUNTING W/ HEAVY DUTY ARM & HOLD OPEN
7. THRESHOLD: ALUMINUM THRESHOLD 1/2" MAX HEIGHT (ADA)

GLAZING:

1. ALL GLAZING TO BE LOW E-4
2. PROVIDE TEMPERED GLAZING IN ALL AREA REQUIRED BY CODE.
3. GLAZING COLORS:  
G1: 1" INSULATED CLEAR ECLIPSE ADVANTAGE (LOW E)  
-1/4" CLEAR ECLIPSE ADVANTAGE (LOW E SURFACE #2)  
-1/2" AIR SPACE  
-1/4" CLEAR ANNEALED  
G2: 1" INSULATED CLEAR ECLIPSE ADVANTAGE (LOW E) SPANDREL  
-1/4" CLEAR ECLIPSE ADVANTAGE (LOW E SURFACE #2)  
-1/2" AIR SPACE  
-1/4" CLEAR ANNEALED (SPANDREL COATING SURFACE #4)

Key Plan:

Architect's Stamp:

Project:  
**Fifteen Great Road II LLC**  
15 Great Road,  
Littleton, MA.  
Client:  
Omni Properties, LLC  
200 Baker Ave, Suite 303  
Concord, MA 01742  
Tel: (978) 369-4884  
Project #: 12023  
Scale: As Noted

Issue: Progress Date: 5/8/2012

Revisions: Date:

Drawing Title:  
Building Type TH3A  
Exterior Elevations  
Sheet Number:  
**A.201**

200 Ayer Road, Harvard, MA 01451  
Tel: (978) 456-2800 Fax: (978) 456-2801  
www.jmaugel.com

THESE DOCUMENTS AND ALL IDEAS, ARRANGEMENTS, DESIGNS AND PLANS INDICATED THEREON OR REPRESENTED THEREBY ARE OWNED BY AND REMAIN THE PROPERTY OF MAUGEL ARCHITECTS, INC. AND NO PART THEREOF SHALL BE REPRODUCED OR TRANSMITTED IN ANY FORM OR BY ANY MEANS, ELECTRONIC OR MECHANICAL, INCLUDING PHOTOCOPYING, RECORDING, OR BY ANY INFORMATION STORAGE AND RETRIEVAL SYSTEM, WITHOUT THE EXPRESS WRITTEN PERMISSION OF MAUGEL ARCHITECTS, INC.

Notes:

**EXTERIOR WINDOW  
FRAMING & GLAZING**

- GENERAL WINDOW NOTES:**
1. ALL DIMENSIONS SHOWN ON ARCHITECTURAL DRAWINGS ARE ROUGH OPENINGS. SHOP DRAWINGS SHOULD REFLECT APPROPRIATE FRAME SIZES INCLUDING JOINT SIZES PER MANUFACTURERS SPECIFICATIONS.
  2. G.C./SUB-CONTRACTOR TO FIELD VERIFY ALL OPENINGS PRIOR TO FABRICATION OF WINDOWS.
  3. SUBMIT COLOR SAMPLES FOR FRAMES AND GLAZING AS PART OF THE SHOP DRAWING PROCESS.

- STOREFRONT SYTEM:**
1. KAWNEER 451T - FRONT GLAZED
  2. FRAME COLOR - CLEAR ANODIZED ALUMINUM

- CURTAINWALL SYSTEM:**
1. KAWNEER 1600 SYSTEM - 7-1/2" FRAME DEPTH
  2. STEEL REINFORCING TO BY FABRICTOR DURING SHOP DRAWINGS AS REQUIRED TO MEET MANUFACTURE SPECIFICATIONS AND WIND LOAD REQUIREMENTS.
  3. FRAME COLOR - CLEAR ANODIZED ALUMINUM.

- STOREFRONT & CURTAINWALL  
ENTRANCES:**
1. DOORS: KAWNEER 350 MEDIUM STILE
  2. PANIC PUSH BAR (DOUBLE DOORS): DOOR-O-MATIC #1690 CONCEALED VERTICAL ROD
  3. PANIC PUSH BAR (SINGLE DOOR): DOOR-O-MATIC #1790 RIM EXIT DEVICE
  4. PUSH BAR AT NON-LATCHING DOORS: STYLE CO-12/CPII
  5. PULLS: STYLE CO-12
  6. CLOSER: NORTON 1605 BC, PARALLEL ARM MOUNTING W/ HEAVY DUTY ARM & HOLD OPEN
  7. THRESHOLD: ALUMINUM THRESHOLD 1/2" MAX HEIGHT (ADA)

- GLAZING:**
1. ALL GLAZING TO BE LOW E-4
  2. PROVIDE TEMPERED GLAZING IN ALL AREA REQUIRED BY CODE.
  3. GLAZING COLORS:  
G1: 1" INSULATED CLEAR ECLIPSE ADVANTAGE (LOW E)  
-1/4" CLEAR ECLIPSE ADVANTAGE (LOW E SURFACE #2)  
-1/2" AIR SPACE  
-1/4" CLEAR ANNEALED  
G2: 1" INSULATED CLEAR ECLIPSE ADVANTAGE (LOW E) SPANDREL  
-1/4" CLEAR ECLIPSE ADVANTAGE (LOW E SURFACE #2)  
-1/2" AIR SPACE  
-1/4" CLEAR ANNEALED (SPANDREL COATING SURFACE #4)

Key Plan:

Architect's Stamp:

Project:

**Fifteen Great  
Road II LLC**

15 Great Road,  
Littleton, MA.

Client:

Omni Properties, LLC  
200 Baker Ave, Suite 303  
Concord, MA 01742  
Tel: (978) 369-4884

Project #: 12023

Scale: As Noted

Issue:

Progress

Date:

5/8/2012

Revisions:

Date:

Drawing Title:

Building Type TH3CDU  
Exterior Elevations

Sheet Number:

**A.201**



200 Ayer Road, Harvard, MA 01451  
Tel: (978) 456-2800 Fax: (978) 456-2801  
www.jmaugel.com

THESE DOCUMENTS ARE ALL IDEAS, ARRANGEMENTS, DESIGNS AND PLANS INDICATED THEREON OR REPRESENTED THEREBY AND OWNERSHIP AND RESERVATION OF THE PROPERTY OF MAUGEL ARCHITECTS, INC. AND NO PART THEREOF SHALL BE REPRODUCED OR TRANSMITTED IN ANY FORM OR BY ANY MEANS, ELECTRONIC OR MECHANICAL, WITHOUT PERMISSION IN WRITING FROM MAUGEL ARCHITECTS, INC.

WINDOW HEAD HT.

THIRD FLOOR

WINDOW HEAD HT.

SECOND FLOOR  
(EL. 262')

WINDOW HEAD HT.

FIRST FLOOR  
GARAGE (EL. 252.5')

**BUILDING TYPE TH3CDU - RIGHT ELEVATION**

SCALE: 1/8"=1'-0"

1

WINDOW HEAD HT.

THIRD FLOOR

WINDOW HEAD HT.

SECOND FLOOR  
(EL. 264.5')

WINDOW HEAD HT.

FIRST FLOOR  
GARAGE (EL. 255')

WINDOW HEAD HT.

THIRD FLOOR

WINDOW HEAD HT.

SECOND FLOOR  
(EL. 262')

WINDOW HEAD HT.

FIRST FLOOR  
GARAGE (EL. 252.5')

**BUILDING TYPE TH3CDU - FRONT ELEVATION**

SCALE: 1/8"=1'-0"

2

Notes:

EXTERIOR WINDOW  
FRAMING & GLAZING

- GENERAL WINDOW NOTES:
1. ALL DIMENSIONS SHOWN ON ARCHITECTURAL DRAWINGS ARE ROUGH OPENINGS. SHOP DRAWINGS SHOULD REFLECT APPROPRIATE FRAME SIZES INCLUDING JOINT SIZES PER MANUFACTURERS SPECIFICATIONS.
  2. G.C./SUB-CONTRACTOR TO FIELD VERIFY ALL OPENINGS PRIOR TO FABRICATION OF WINDOWS.
  3. SUBMIT COLOR SAMPLES FOR FRAMES AND GLAZING AS PART OF THE SHOP DRAWING PROCESS.

- STOREFRONT SYTEM:
1. KAWNEER 451T - FRONT GLAZED
  2. FRAME COLOR - CLEAR ANODIZED ALUMINUM

- CURTAINWALL SYSTEM:
1. KAWNEER 1600 SYSTEM - 7-1/2" FRAME DEPTH
  2. STEEL REINFORCING TO BY FABRICTOR DURING SHOP DRAWINGS AS REQUIRED TO MEET MANUFACTURE SPECIFICATIONS AND WIND LOAD REQUIREMENTS.
  3. FRAME COLOR - CLEAR ANODIZED ALUMINUM.

- STOREFRONT & CURTAINWALL ENTRANCES:
1. DOORS: KAWNEER 350 MEDIUM STILE
  2. PANIC PUSH BAR (DOUBLE DOORS): DOOR-O-MATIC #1690 CONCEALED VERTICAL ROD
  3. PANIC PUSH BAR (SINGLE DOOR): DOOR-O-MATIC #1790 RIM EXIT DEVICE
  4. PUSH BAR AT NON-LATCHING DOORS: STYLE CO-12/CPH
  5. PULLS: STYLE CO-12
  6. CLOSER: NORTON 1605 BC, PARALLEL ARM MOUNTING W/ HEAVY DUTY ARM & HOLD OPEN
  7. THRESHOLD: ALUMINUM THRESHOLD 1/2" MAX HEIGHT (ADA)

- GLAZING:
1. ALL GLAZING TO BE LOW E-4
  2. PROVIDE TEMPERED GLAZING IN ALL AREA REQUIRED BY CODE.
  3. GLAZING COLORS:  
G1: 1" INSULATED CLEAR ECLIPSE ADVANTAGE (LOW E)  
-1/4" CLEAR ECLIPSE ADVANTAGE (LOW E SURFACE #2)  
-1/2" AIR SPACE  
-1/4" CLEAR ANNEALED  
G2: 1" INSULATED CLEAR ECLIPSE ADVANTAGE (LOW E) SPANDREL  
-1/4" CLEAR ECLIPSE ADVANTAGE (LOW E SURFACE #2)  
-1/2" AIR SPACE  
-1/4" CLEAR ANNEALED (SPANDREL COATING SURFACE #4)

Key Plan:

Architect's Stamp:

Project:

**Fifteen Great Road II LLC**

15 Great Road,  
Littleton, MA.

Client:

Omni Properties, LLC  
200 Baker Ave, Suite 303  
Concord, MA 01742  
Tel: (978) 369-4884

Project #: 12023

Scale: As Noted

Issue:

Progress

Date:

5/8/2012

Revisions:

Date:

Drawing Title:

Building Type TH3CDU  
Exterior Elevations

Sheet Number:

**A.202**



200 Ayer Road, Harvard, MA 01451  
Tel: (978) 456-2800 Fax: (978) 456-2801  
www.jmaugel.com

THESE DOCUMENTS ARE ALL IDEAS, ARRANGEMENTS, DESIGNS AND PLANS INDICATED THEREON OR REPRESENTED THEREBY ARE OWNED BY AND REMAIN THE PROPERTY OF MAUGEL ARCHITECTS, INC. AND NO PART THEREOF SHALL BE UTILIZED IN ANY FURTHER FORM OR FOR ANY OTHER PURPOSE WITHOUT THE EXPRESS WRITTEN PERMISSION OF MAUGEL ARCHITECTS, INC.



BUILDING TYPE TH3CDU - LEFT ELEVATION

SCALE: 1/8"=1'-0"

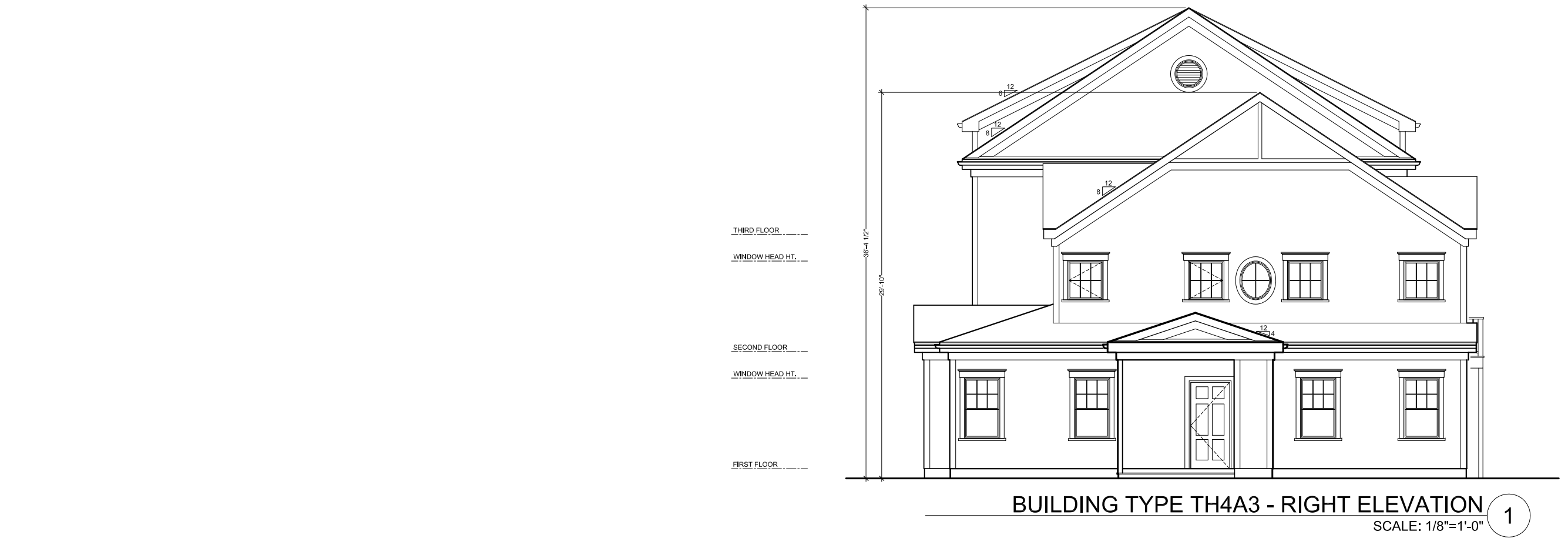
1



BUILDING TYPE TH3CDU - REAR ELEVATION

SCALE: 1/8"=1'-0"

2



Notes:

**EXTERIOR WINDOW  
FRAMING & GLAZING**

**GENERAL WINDOW NOTES:**  
1. ALL DIMENSIONS SHOWN ON ARCHITECTURAL DRAWINGS ARE ROUGH OPENINGS. SHOP DRAWINGS SHOULD REFLECT APPROPRIATE FRAME SIZES INCLUDING JOINT SIZES PER MANUFACTURERS SPECIFICATIONS.  
2. G.C./SUB-CONTRACTOR TO FIELD VERIFY ALL OPENINGS PRIOR TO FABRICATION OF WINDOWS.  
3. SUBMIT COLOR SAMPLES FOR FRAMES AND GLAZING AS PART OF THE SHOP DRAWING PROCESS.

**STOREFRONT SYTEM:**  
1. KAWNEER 451T - FRONT GLAZED  
2. FRAME COLOR - CLEAR ANODIZED ALUMINUM

**CURTAINWALL SYSTEM:**  
1. KAWNEER 1600 SYSTEM - 7-1/2" FRAME DEPTH  
2. STEEL REINFORCING TO BY FABRICTOR DURING SHOP DRAWINGS AS REQUIRED TO MEET MANUFACTURE SPECIFICATIONS AND WIND LOAD REQUIREMENTS.  
3. FRAME COLOR - CLEAR ANODIZED ALUMINUM.

**STOREFRONT & CURTAINWALL ENTRANCES:**  
1. DOORS: KAWNEER 350 MEDIUM STILE  
2. PANIC PUSH BAR (DOUBLE DOORS): DOOR-O-MATIC #1690 CONCEALED VERTICAL ROD  
3. PANIC PUSH BAR (SINGLE DOOR): DOOR-O-MATIC #1790 RM EXIT DEVICE  
4. PUSH BAR AT NON-LATCHING DOORS: STYLE CO-12/CPH  
5. PULLS: STYLE CO-12  
6. CLOSER: NORTON 1605 BC, PARALLEL ARM MOUNTING W/ HEAVY DUTY ARM & HOLD OPEN  
7. THRESHOLD: ALUMINUM THRESHOLD 1/2" MAX HEIGHT (ADA)

**GLAZING:**  
1. ALL GLAZING TO BE LOW E-4  
2. PROVIDE TEMPERED GLAZING IN ALL AREA REQUIRED BY CODE.  
3. GLAZING COLORS:  
G1: 1" INSULATED CLEAR ECLIPSE ADVANTAGE (LOW E)  
-1/4" CLEAR ECLIPSE ADVANTAGE (LOW E SURFACE #2)  
-1/2" AIR SPACE  
-1/4" CLEAR ANNEALED  
G2: 1" INSULATED CLEAR ECLIPSE ADVANTAGE (LOW E) SPANDREL  
-1/4" CLEAR ECLIPSE ADVANTAGE (LOW E SURFACE #2)  
-1/2" AIR SPACE  
-1/4" CLEAR ANNEALED (SPANDREL COATING SURFACE #4)

Key Plan:

Architect's Stamp:

**Project:**  
**Fifteen Great Road II LLC**  
15 Great Road,  
Littleton, MA.  
**Client:**  
Omni Properties, LLC  
200 Baker Ave, Suite 303  
Concord, MA 01742  
Tel: (978) 369-4884  
**Project #:** 12023  
**Scale:** As Noted

**Issue:** Date:  
Progress 5/8/2012

**Revisions:** Date:  

Revisions	Date

**Drawing Title:**  
Building Type TH4A3  
Exterior Elevations  
**Sheet Number:**

**A.201**

200 Ayer Road, Harvard, MA 01451  
Tel: (978) 456-2800 Fax: (978) 456-2801  
www.jmaugel.com

THESE DOCUMENTS ARE ALL BEARS, ARRANGEMENTS, DESIGNS AND PLANS, INDICATED THEREON OR REPRESENTED THEREBY AND OWNED BY AND REMAIN THE PROPERTY OF MAUGEL ARCHITECTS, INC. AND NO PART THEREOF SHALL BE REPRODUCED OR TRANSMITTED IN ANY FORM OR BY ANY MEANS, ELECTRONIC OR MECHANICAL, INCLUDING PHOTOCOPYING, RECORDING, OR BY ANY INFORMATION STORAGE AND RETRIEVAL SYSTEM, WITHOUT THE WRITTEN PERMISSION OF MAUGEL ARCHITECTS, INC.



BUILDING TYPE TH4A3 - LEFT ELEVATION

SCALE: 1/8"=1'-0"

1



BUILDING TYPE TH4A3 - REAR ELEVATION

SCALE: 1/8"=1'-0"

2

Notes:

EXTERIOR WINDOW  
FRAMING & GLAZING

GENERAL WINDOW NOTES:  
1. ALL DIMENSIONS SHOWN ON ARCHITECTURAL DRAWINGS ARE ROUGH OPENINGS. SHOP DRAWINGS SHOULD REFLECT APPROPRIATE FRAME SIZES INCLUDING JOINT SIZES PER MANUFACTURERS SPECIFICATIONS.  
2. G.C./SUB-CONTRACTOR TO FIELD VERIFY ALL OPENINGS PRIOR TO FABRICATION OF WINDOWS.  
3. SUBMIT COLOR SAMPLES FOR FRAMES AND GLAZING AS PART OF THE SHOP DRAWING PROCESS.

STOREFRONT SYTEM:  
1. KAWNEER 451T - FRONT GLAZED  
2. FRAME COLOR - CLEAR ANODIZED ALUMINUM

CURTAINWALL SYSTEM:  
1. KAWNEER 1600 SYSTEM - 7-1/2" FRAME DEPTH  
2. STEEL REINFORCING TO BY FABRICTOR DURING SHOP DRAWINGS AS REQUIRED TO MEET MANUFACTURE SPECIFICATIONS AND WIND LOAD REQUIREMENTS.  
3. FRAME COLOR - CLEAR ANODIZED ALUMINUM.

STOREFRONT & CURTAINWALL  
ENTRANCES:  
1. DOORS: KAWNEER 350 MEDIUM STILE  
2. PANIC PUSH BAR (DOUBLE DOORS): DOOR-O-MATIC #1690 CONCEALED VERTICAL ROD  
3. PANIC PUSH BAR (SINGLE DOOR): DOOR-O-MATIC #1790 RM EXIT DEVICE  
4. PUSH BAR AT NON-LATCHING DOORS: STYLE CO-12/CPH  
5. PULLS: STYLE CO-12  
6. CLOSER: NORTON 1605 BC, PARALLEL ARM MOUNTING W/ HEAVY DUTY ARM & HOLD OPEN  
7. THRESHOLD: ALUMINUM THRESHOLD 1/2" MAX HEIGHT (ADA)

GLAZING:  
1. ALL GLAZING TO BE LOW E-4  
2. PROVIDE TEMPERED GLAZING IN ALL AREA REQUIRED BY CODE.  
3. GLAZING COLORS:  
G1: 1" INSULATED CLEAR ECLIPSE ADVANTAGE (LOW E)  
-1/4" CLEAR ECLIPSE ADVANTAGE (LOW E SURFACE #2)  
-1/2" AIR SPACE  
-1/4" CLEAR ANNEALED  
G2: 1" INSULATED CLEAR ECLIPSE ADVANTAGE (LOW E) SPANDREL  
-1/4" CLEAR ECLIPSE ADVANTAGE (LOW E SURFACE #2)  
-1/2" AIR SPACE  
-1/4" CLEAR ANNEALED (SPANDREL COATING SURFACE #4)

Key Plan:

Architect's Stamp:

Project:

**Fifteen Great Road II LLC**  
15 Great Road,  
Littleton, MA.

Client:

Omni Properties, LLC  
200 Baker Ave, Suite 303  
Concord, MA 01742  
Tel: (978) 369-4884

Project #:

12023

Scale:

As Noted

Issue:

Progress

Revisions:

Drawing Title:

Building Type TH4A3

Exterior Elevations

Sheet Number:

**A.202**



200 Ayer Road, Harvard, MA 01451  
Tel: (978) 456-2800 Fax: (978) 456-2801  
www.jmaugel.com

THESE DOCUMENTS AND ALL IDEAS, ARRANGEMENTS, DESIGNS AND PLANS INDICATED THEREON OR REPRESENTED THEREBY ARE OWNED BY AND REMAIN THE PROPERTY OF MAUGEL ARCHITECTS, INC. AND NO PART THEREOF SHALL BE REPRODUCED OR TRANSMITTED IN ANY FORM OR BY ANY MEANS, ELECTRONIC OR MECHANICAL, INCLUDING PHOTOCOPYING, RECORDING, OR BY ANY INFORMATION STORAGE AND RETRIEVAL SYSTEM, WITHOUT THE EXPRESS WRITTEN PERMISSION OF MAUGEL ARCHITECTS, INC.

WINDOW HEAD HT.

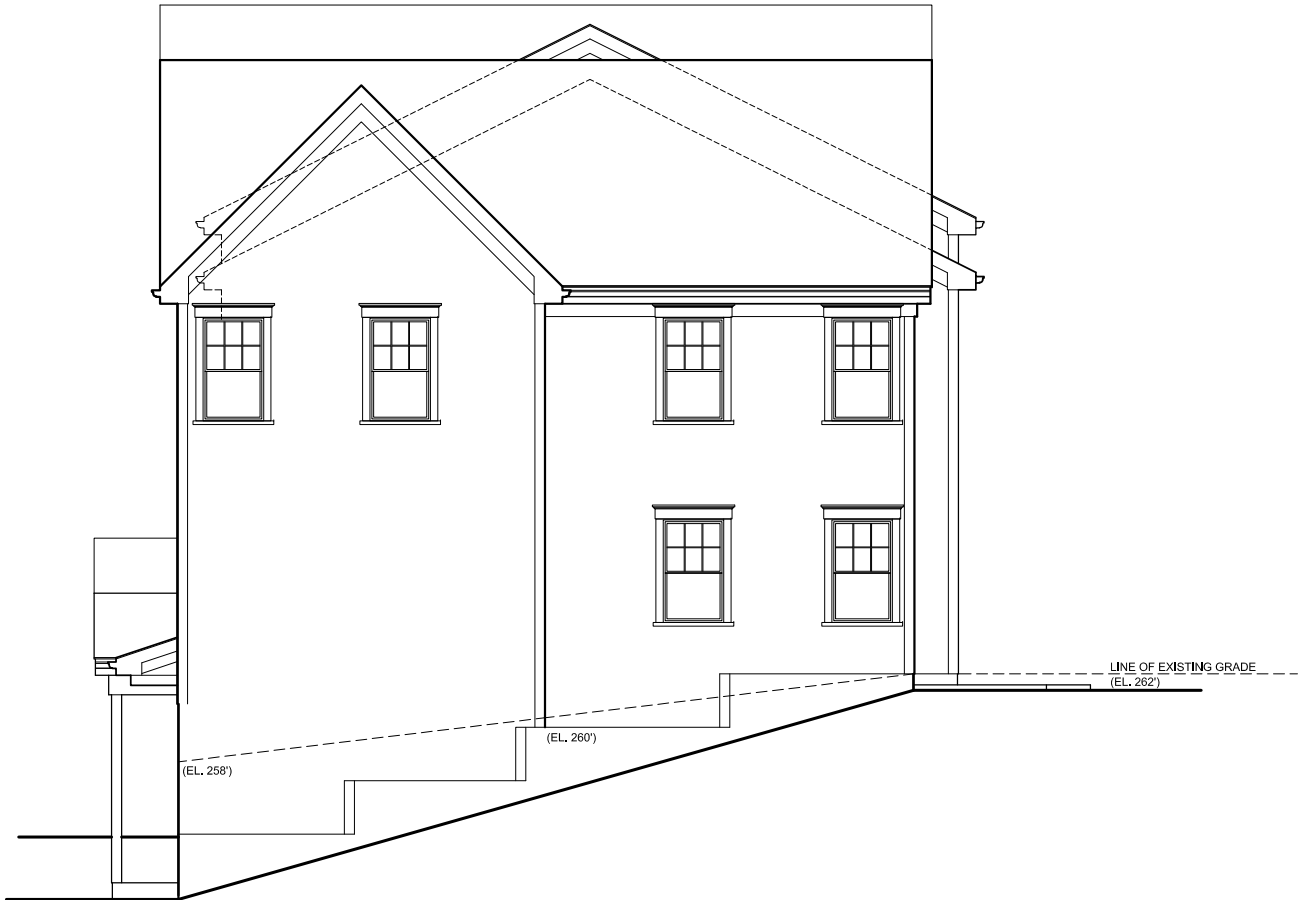
THIRD FLOOR

WINDOW HEAD HT.

SECOND FLOOR  
(EL. 262')

WINDOW HEAD HT.

FIRST FLOOR  
GARAGE (EL. 252.5')



BUILDING TYPE TH4CDU - RIGHT ELEVATION

SCALE: 1/8"=1'-0"

1

WINDOW HEAD HT.

THIRD FLOOR

WINDOW HEAD HT.

LINE OF EXISTING GRADE  
(EL. 265.5')

WINDOW HEAD HT.

FIRST FLOOR  
GARAGE (EL. 255')



BUILDING TYPE TH4CDU - FRONT ELEVATION

SCALE: 1/8"=1'-0"

2

Notes:

**EXTERIOR WINDOW  
FRAMING & GLAZING**

**GENERAL WINDOW NOTES:**

1. ALL DIMENSIONS SHOWN ON ARCHITECTURAL DRAWINGS ARE ROUGH OPENINGS. SHOP DRAWINGS SHOULD REFLECT APPROPRIATE FRAME SIZES INCLUDING JOINT SIZES PER MANUFACTURERS SPECIFICATIONS.
2. G.C./SUB-CONTRACTOR TO FIELD VERIFY ALL OPENINGS PRIOR TO FABRICATION OF WINDOWS.
3. SUBMIT COLOR SAMPLES FOR FRAMES AND GLAZING AS PART OF THE SHOP DRAWING PROCESS.

**STOREFRONT SYTEM:**

1. KAWNEER 451T - FRONT GLAZED
2. FRAME COLOR - CLEAR ANODIZED ALUMINUM

**CURTAINWALL SYSTEM:**

1. KAWNEER 1600 SYSTEM - 7-1/2" FRAME DEPTH
2. STEEL REINFORCING TO BY FABRICTOR DURING SHOP DRAWINGS AS REQUIRED TO MEET MANUFACTURE SPECIFICATIONS AND WIND LOAD REQUIREMENTS.
3. FRAME COLOR - CLEAR ANODIZED ALUMINUM.

**STOREFRONT & CURTAINWALL  
ENTRANCES:**

1. DOORS: KAWNEER 350 MEDIUM STILE
2. PANIC PUSH BAR (DOUBLE DOORS): DOOR-O-MATIC #1690 CONCEALED VERTICAL ROD
3. PANIC PUSH BAR (SINGLE DOOR): DOOR-O-MATIC #1790 RM EXIT DEVICE
4. PUSH BAR AT NON-LATCHING DOORS: STYLE CO-12/CPII
5. PULLS: STYLE CO-12
6. CLOSER: NORTON 1605 BC, PARALLEL ARM MOUNTING W/ HEAVY DUTY ARM & HOLD OPEN
7. THRESHOLD: ALUMINUM THRESHOLD 1/2" MAX HEIGHT (ADA)

**GLAZING:**

1. ALL GLAZING TO BE LOW E-4
2. PROVIDE TEMPERED GLAZING IN ALL AREA REQUIRED BY CODE.
3. GLAZING COLORS:  
G1: 1" INSULATED CLEAR ECLIPSE ADVANTAGE (LOW E)  
-1/4" CLEAR ECLIPSE ADVANTAGE (LOW E SURFACE #2)  
-1/2" AIR SPACE  
-1/4" CLEAR ANNEALED  
G2: 1" INSULATED CLEAR ECLIPSE ADVANTAGE (LOW E) SPANDREL  
-1/4" CLEAR ECLIPSE ADVANTAGE (LOW E SURFACE #2)  
-1/2" AIR SPACE  
-1/4" CLEAR ANNEALED (SPANDREL COATING SURFACE #4)

Key Plan:

Architect's Stamp:

Project:

**Fifteen Great  
Road II LLC**

15 Great Road,  
Littleton, MA.

Client:

Omni Properties, LLC  
200 Baker Ave, Suite 303  
Concord, MA 01742  
Tel: (978) 369-4884

**Project #:** 12023

**Scale:** As Noted

**Issue:**

Progress

**Date:**

5/8/2012

**Revisions:**

**Date:**

**Drawing Title:**

Building Type TH4CDU  
Exterior Elevations

**Sheet Number:**

**A.201**

MAUGEL ARCHITECTS, INC.

200 Ayer Road, Harvard, MA 01451  
Tel: (978) 456-2800 Fax: (978) 456-2801  
www.jmaugel.com

THESE DOCUMENTS AND ALL IDEAS, ARRANGEMENTS, DESIGNS AND PLANS INDICATED THEREON OR REPRESENTED THEREBY ARE OWNED BY AND REMAIN THE PROPERTY OF MAUGEL ARCHITECTS, INC. AND NO PART THEREOF SHALL BE REPRODUCED OR TRANSMITTED IN ANY FORM OR BY ANY MEANS, ELECTRONIC OR MECHANICAL, INCLUDING PHOTOCOPYING, RECORDING, OR BY ANY INFORMATION STORAGE AND RETRIEVAL SYSTEM, WITHOUT PERMISSION IN WRITING FROM MAUGEL ARCHITECTS, INC.



Notes:

EXTERIOR WINDOW  
FRAMING & GLAZING

- GENERAL WINDOW NOTES:
1. ALL DIMENSIONS SHOWN ON ARCHITECTURAL DRAWINGS ARE ROUGH OPENINGS. SHOP DRAWINGS SHOULD REFLECT APPROPRIATE FRAME SIZES INCLUDING JOINT SIZES PER MANUFACTURERS SPECIFICATIONS.
  2. G.C./SUB-CONTRACTOR TO FIELD VERIFY ALL OPENINGS PRIOR TO FABRICATION OF WINDOWS.
  3. SUBMIT COLOR SAMPLES FOR FRAMES AND GLAZING AS PART OF THE SHOP DRAWING PROCESS.

- STOREFRONT SYTEM:
1. KAWNEER 451T - FRONT GLAZED
  2. FRAME COLOR - CLEAR ANODIZED ALUMINUM

- CURTAINWALL SYSTEM:
1. KAWNEER 1600 SYSTEM - 7-1/2" FRAME DEPTH
  2. STEEL REINFORCING TO BY FABRICTOR DURING SHOP DRAWINGS AS REQUIRED TO MEET MANUFACTURE SPECIFICATIONS AND WIND LOAD REQUIREMENTS.
  3. FRAME COLOR - CLEAR ANODIZED ALUMINUM.

- STOREFRONT & CURTAINWALL ENTRANCES:
1. DOORS: KAWNEER 350 MEDIUM STILE
  2. PANIC PUSH BAR (DOUBLE DOORS): DOOR-O-MATIC #1690 CONCEALED VERTICAL ROD
  3. PANIC PUSH BAR (SINGLE DOOR): DOOR-O-MATIC #1790 RM EXIT DEVICE
  4. PUSH BAR AT NON-LATCHING DOORS: STYLE CO-12/CPH
  5. PULLS: STYLE CO-12
  6. CLOSER: NORTON 1605 BC, PARALLEL ARM MOUNTING W/ HEAVY DUTY ARM & HOLD OPEN
  7. THRESHOLD: ALUMINUM THRESHOLD 1/2" MAX HEIGHT (ADA)

- GLAZING:
1. ALL GLAZING TO BE LOW E-4
  2. PROVIDE TEMPERED GLAZING IN ALL AREA REQUIRED BY CODE.
  3. GLAZING COLORS:  
G1: 1" INSULATED CLEAR ECLIPSE ADVANTAGE (LOW E)  
-1/4" CLEAR ECLIPSE ADVANTAGE (LOW E SURFACE #2)  
-1/2" AIR SPACE  
-1/4" CLEAR ANNEALED  
G2: 1" INSULATED CLEAR ECLIPSE ADVANTAGE (LOW E) SPANDREL  
-1/4" CLEAR ECLIPSE ADVANTAGE (LOW E SURFACE #2)  
-1/2" AIR SPACE  
-1/4" CLEAR ANNEALED (SPANDREL COATING SURFACE #4)

Key Plan:

Architect's Stamp:

Project:  
**Fifteen Great Road II LLC**  
15 Great Road,  
Littleton, MA.  
Client:  
Omni Properties, LLC  
200 Baker Ave, Suite 303  
Concord, MA 01742  
Tel: (978) 369-4884  
Project #: 12023  
Scale: As Noted

Issue: Progress  
Date: 5/8/2012

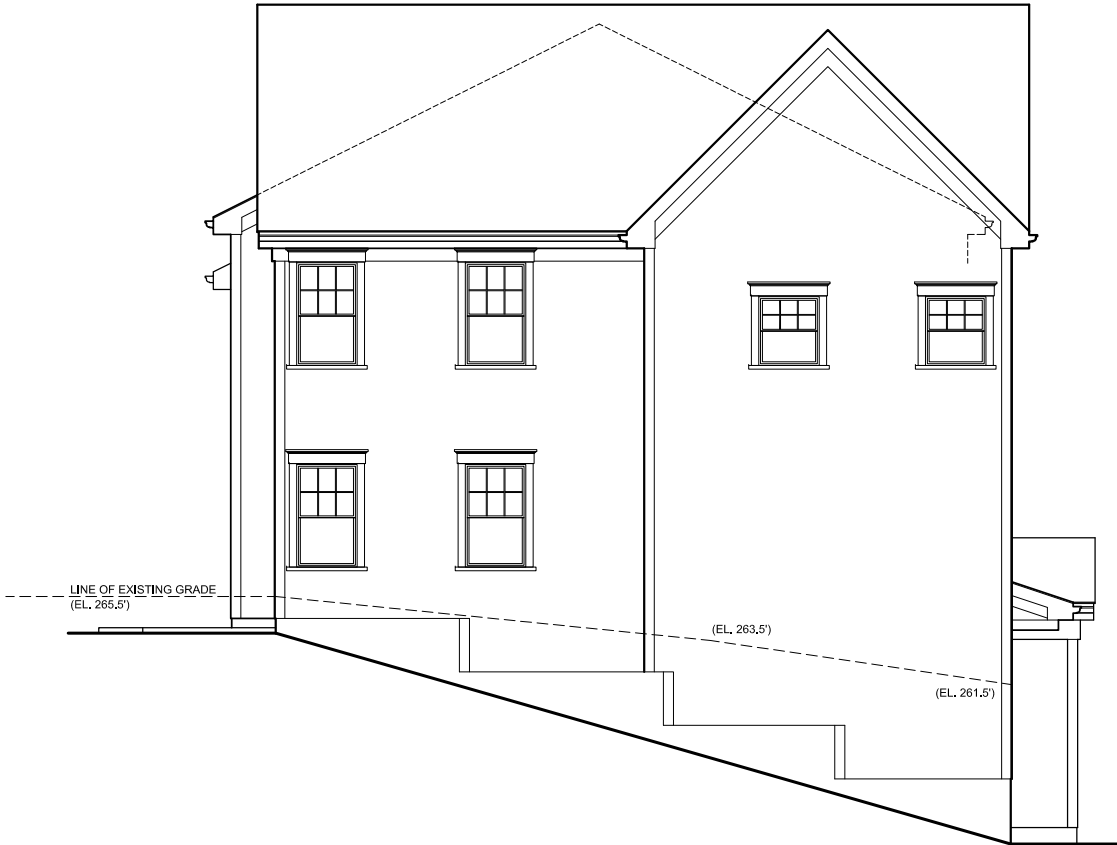
Revisions: Date:

Drawing Title:  
Building Type TH4CDU  
Exterior Elevations

Sheet Number:  
**A.202**

200 Ayer Road, Harvard, MA 01451  
Tel: (978) 456-2800 Fax: (978) 456-2801  
www.jmaugel.com

THESE DOCUMENTS ARE ALL BEARS. UNLESS OTHERWISE NOTED, ALL DIMENSIONS ARE IN FEET AND INCHES. DIMENSIONS ARE SHOWN TO THE CENTERLINE UNLESS OTHERWISE NOTED. THE PROPERTY OF MAUGEL ARCHITECTS, INC. AND NO PART THEREOF SHALL BE REPRODUCED OR TRANSMITTED IN ANY FORM OR BY ANY MEANS, ELECTRONIC OR MECHANICAL, WITHOUT PERMISSION IN WRITING FROM MAUGEL ARCHITECTS, INC.



BUILDING TYPE TH4CDU - LEFT ELEVATION

SCALE: 1/8"=1'-0"

1

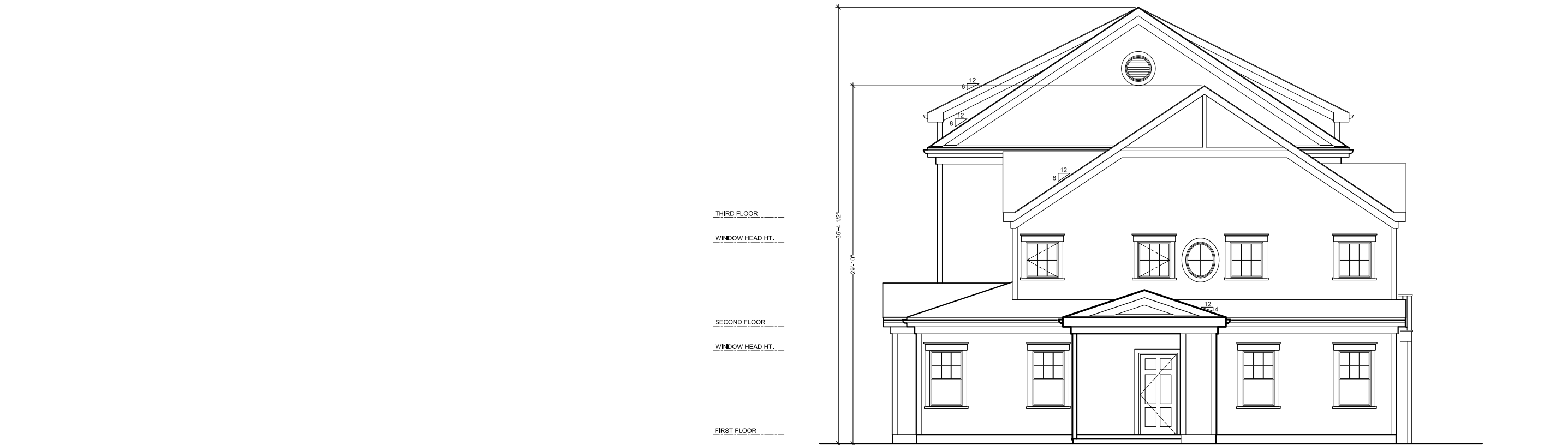


BUILDING TYPE TH4CDU - REAR ELEVATION

SCALE: 1/8"=1'-0"

2





BUILDING TYPE TH5B3 - RIGHT ELEVATION

SCALE: 1/8"=1'-0"

1



BUILDING TYPE TH5B3 - FRONT ELEVATION

SCALE: 1/8"=1'-0"

2

Notes:

**EXTERIOR WINDOW  
FRAMING & GLAZING**

**GENERAL WINDOW NOTES:**  
1. ALL DIMENSIONS SHOWN ON ARCHITECTURAL DRAWINGS ARE ROUGH OPENINGS. SHOP DRAWINGS SHOULD REFLECT APPROPRIATE FRAME SIZES INCLUDING JOINT SIZES PER MANUFACTURERS SPECIFICATIONS.  
2. G.C./SUB-CONTRACTOR TO FIELD VERIFY ALL OPENINGS PRIOR TO FABRICATION OF WINDOWS.  
3. SUBMIT COLOR SAMPLES FOR FRAMES AND GLAZING AS PART OF THE SHOP DRAWING PROCESS.

**STOREFRONT SYTEM:**  
1. KAWNEER 451T - FRONT GLAZED  
2. FRAME COLOR - CLEAR ANODIZED ALUMINUM

**CURTAINWALL SYSTEM:**  
1. KAWNEER 1600 SYSTEM - 7-1/2" FRAME DEPTH  
2. STEEL REINFORCING TO BY FABRICATOR DURING SHOP DRAWINGS AS REQUIRED TO MEET MANUFACTURE SPECIFICATIONS AND WIND LOAD REQUIREMENTS.  
3. FRAME COLOR - CLEAR ANODIZED ALUMINUM.

**STOREFRONT & CURTAINWALL ENTRANCES:**  
1. DOORS: KAWNEER 350 MEDIUM STILE  
2. PANIC PUSH BAR (DOUBLE DOORS): DOOR-O-MATIC #1690 CONCEALED VERTICAL ROD  
3. PANIC PUSH BAR (SINGLE DOOR): DOOR-O-MATIC #1790 RM EXIT DEVICE  
4. PUSH BAR AT NON-LATCHING DOORS: STYLE CO-12/CPII  
5. PULLS: STYLE CO-12  
6. CLOSER: NORTON 1605 BC, PARALLEL ARM MOUNTING W/ HEAVY DUTY ARM & HOLD OPEN  
7. THRESHOLD: ALUMINUM THRESHOLD 1/2" MAX HEIGHT (ADA)

**GLAZING:**  
1. ALL GLAZING TO BE LOW E-4  
2. PROVIDE TEMPERED GLAZING IN ALL AREA REQUIRED BY CODE.  
3. GLAZING COLORS:  
G1: 1" INSULATED CLEAR ECLIPSE ADVANTAGE (LOW E)  
-1/4" CLEAR ECLIPSE ADVANTAGE (LOW E SURFACE #2)  
-1/2" AIR SPACE  
-1/4" CLEAR ANNEALED  
G2: 1" INSULATED CLEAR ECLIPSE ADVANTAGE (LOW E) SPANDREL  
-1/4" CLEAR ECLIPSE ADVANTAGE (LOW E SURFACE #2)  
-1/2" AIR SPACE  
-1/4" CLEAR ANNEALED (SPANDREL COATING SURFACE #4)

Key Plan:

Architect's Stamp:

**Project:**  
**Fifteen Great Road II LLC**  
15 Great Road,  
Littleton, MA.

**Client:**  
Omni Properties, LLC  
200 Baker Ave, Suite 303  
Concord, MA 01742  
Tel: (978) 369-4884

**Project #:** 12023

**Scale:** As Noted

**Issue:** **Date:**  
Progress 5/8/2012

**Revisions:** **Date:**

**Drawing Title:**  
Building Type TH5B3  
Exterior Elevations

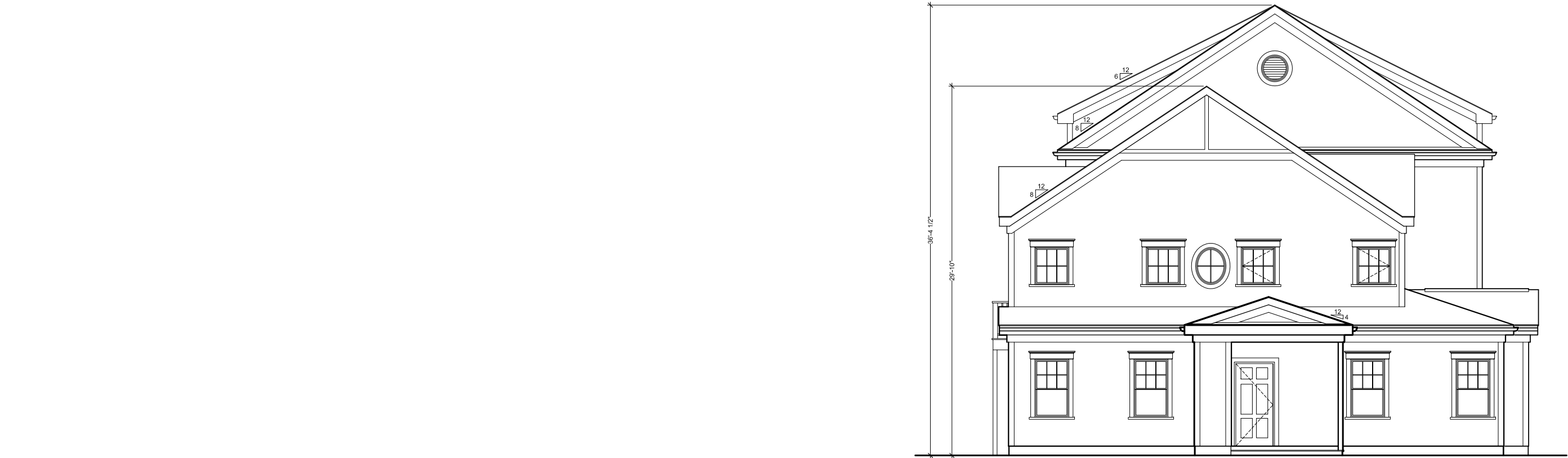
**Sheet Number:**

**A.201**



200 Ayer Road, Harvard, MA 01451  
Tel: (978) 456-2800 Fax: (978) 456-2801  
www.jmaugel.com

THESE DOCUMENTS ARE ALL IDEAS, ARRANGEMENTS, DESIGNS AND PLANS INDICATED THEREON OR REPRESENTED THEREBY AND OWNED BY AND REMAIN THE PROPERTY OF MAUGEL ARCHITECTS, INC. AND NO PART THEREOF SHALL BE REPRODUCED OR TRANSMITTED IN ANY FORM OR BY ANY MEANS, ELECTRONIC OR MECHANICAL, INCLUDING PHOTOCOPYING, RECORDING, OR BY ANY INFORMATION STORAGE AND RETRIEVAL SYSTEM, WITHOUT THE EXPRESS WRITTEN PERMISSION OF MAUGEL ARCHITECTS, INC.



BUILDING TYPE TH5B3 - LEFT ELEVATION

SCALE: 1/8"=1'-0"

1



BUILDING TYPE TH5B3 - REAR ELEVATION

SCALE: 1/8"=1'-0"

2

Notes:

EXTERIOR WINDOW  
FRAMING & GLAZING

GENERAL WINDOW NOTES:  
1. ALL DIMENSIONS SHOWN ON ARCHITECTURAL DRAWINGS ARE ROUGH OPENINGS. SHOP DRAWINGS SHOULD REFLECT APPROPRIATE FRAME SIZES INCLUDING JOINT SIZES PER MANUFACTURERS SPECIFICATIONS.  
2. G.C./SUB-CONTRACTOR TO FIELD VERIFY ALL OPENINGS PRIOR TO FABRICATION OF WINDOWS.  
3. SUBMIT COLOR SAMPLES FOR FRAMES AND GLAZING AS PART OF THE SHOP DRAWING PROCESS.

STOREFRONT SYTEM:  
1. KAWNEER 451T - FRONT GLAZED  
2. FRAME COLOR - CLEAR ANODIZED ALUMINUM

CURTAINWALL SYSTEM:  
1. KAWNEER 1600 SYSTEM - 7-1/2" FRAME DEPTH  
2. STEEL REINFORCING TO BY FABRICTOR DURING SHOP DRAWINGS AS REQUIRED TO MEET MANUFACTURE SPECIFICATIONS AND WIND LOAD REQUIREMENTS.  
3. FRAME COLOR - CLEAR ANODIZED ALUMINUM.

STOREFRONT & CURTAINWALL  
ENTRANCES:  
1. DOORS: KAWNEER 350 MEDIUM STILE  
2. PANIC PUSH BAR (DOUBLE DOORS): DOOR-O-MATIC #1690 CONCEALED VERTICAL ROD  
3. PANIC PUSH BAR (SINGLE DOOR): DOOR-O-MATIC #1790 RM EXIT DEVICE  
4. PUSH BAR AT NON-LATCHING DOORS: STYLE CO-12/CPH  
5. PULLS: STYLE CO-12  
6. CLOSER: NORTON 1605 BC, PARALLEL ARM MOUNTING W/ HEAVY DUTY ARM & HOLD OPEN  
7. THRESHOLD: ALUMINUM THRESHOLD 1/2" MAX HEIGHT (ADA)

GLAZING:  
1. ALL GLAZING TO BE LOW E-4  
2. PROVIDE TEMPERED GLAZING IN ALL AREA REQUIRED BY CODE.  
3. GLAZING COLORS:  
G1: 1" INSULATED CLEAR ECLIPSE ADVANTAGE (LOW E)  
-1/4" CLEAR ECLIPSE ADVANTAGE (LOW E SURFACE #2)  
-1/2" AIR SPACE  
-1/4" CLEAR ANNEALED  
G2: 1" INSULATED CLEAR ECLIPSE ADVANTAGE (LOW E) SPANDREL  
-1/4" CLEAR ECLIPSE ADVANTAGE (LOW E SURFACE #2)  
-1/2" AIR SPACE  
-1/4" CLEAR ANNEALED (SPANDREL COATING SURFACE #4)

Key Plan:

Architect's Stamp:

Project:  
**Fifteen Great Road II LLC**  
15 Great Road,  
Littleton, MA.  
Client:  
Omni Properties, LLC  
200 Baker Ave, Suite 303  
Concord, MA 01742  
Tel: (978) 369-4884  
Project #: 12023  
Scale: As Noted

Issue: Progress  
Date: 5/8/2012

Revisions:	Date:

Drawing Title:  
Building Type TH5B3  
Exterior Elevations

Sheet Number:  
**A.202**



200 Ayer Road, Harvard, MA 01451  
Tel: (978) 456-2800 Fax: (978) 456-2801  
www.jmaugel.com

THESE DOCUMENTS ARE ALL IDEAS, ARRANGEMENTS, DESIGNS AND PLANS INDICATED THEREON OR REPRESENTED THEREON AND OWNED BY AND REMAIN THE PROPERTY OF MAUGEL ARCHITECTS, INC. AND NO PART THEREOF SHALL BE REPRODUCED OR USED IN ANY MANNER WITHOUT THE WRITTEN PERMISSION OF MAUGEL ARCHITECTS, INC. © 2012 MAUGEL ARCHITECTS, INC.