



**BUILDING TYPE TH4B3 - RIGHT ELEVATION** 1  
SCALE: 1/4"=1'-0"



**BUILDING TYPE TH4B3 - FRONT ELEVATION** 2  
SCALE: 1/4"=1'-0"

Notes:

- EXTERIOR WINDOW FRAMING & GLAZING**
- GENERAL WINDOW NOTES:**
- ALL DIMENSIONS SHOWN ON ARCHITECTURAL DRAWINGS ARE ROUGH OPENINGS. SHOP DRAWINGS SHOULD REFLECT APPROPRIATE FRAME SIZES INCLUDING JOINT SIZES PER MANUFACTURERS SPECIFICATIONS.
  - G.C./SUB-CONTRACTOR TO FIELD VERIFY ALL OPENINGS PRIOR TO FABRICATION OF WINDOWS.
  - SUBMIT COLOR SAMPLES FOR FRAMES AND GLAZING AS PART OF THE SHOP DRAWING PROCESS.
- STOREFRONT SYSTEM:**
- KAWNEER 451T - FRONT GLAZED
  - FRAME COLOR - CLEAR ANODIZED ALUMINUM
- CURTAINWALL SYSTEM:**
- KAWNEER 1600 SYSTEM - 7-1/2" FRAME DEPTH
  - STEEL REINFORCING TO BY FABRICATOR DURING SHOP DRAWINGS AS REQUIRED TO MEET MANUFACTURE SPECIFICATIONS AND WIND LOAD REQUIREMENTS.
  - FRAME COLOR - CLEAR ANODIZED ALUMINUM.
- STOREFRONT & CURTAINWALL ENTRANCES:**
- DOORS: KAWNEER 350 MEDIUM STILE
  - PANIC PUSH BAR (DOUBLE DOORS): DOOR-O-MATIC #1890 CONCEALED VERTICAL ROD
  - PANIC PUSH BAR (SINGLE DOOR): DOOR-O-MATIC #1790 RIM EXIT DEVICE
  - PUSH BAR AT NON-LATCHING DOORS: STYLE CO-12/CP11
  - PULLS: STYLE CO-12
  - CLOSER: NORTON 1805 BC, PARALLEL ARM MOUNTING W/ HEAVY DUTY ARM & HOLD OPEN
  - THRESHOLD: ALUMINUM THRESHOLD 1/2" MAX HEIGHT (ADA)
- GLAZING:**
- ALL GLAZING TO BE LOW E-II
  - PROVIDE TEMPERED GLAZING IN ALL AREA REQUIRED BY CODE.
  - GLAZING COLORS:
- G1: 1" INSULATED CLEAR ECLIPSE ADVANTAGE (LOW E)  
-1/4" CLEAR ECLIPSE ADVANTAGE (LOW E SURFACE #2)  
-1/2" AIR SPACE  
-1/4" CLEAR ANNEALED
- G2: 1" INSULATED CLEAR ECLIPSE ADVANTAGE (LOW E) SPANDREL  
-1/4" CLEAR ECLIPSE ADVANTAGE (LOW E SURFACE #2)  
-1/2" AIR SPACE  
-1/4" CLEAR ANNEALED (SPANDREL COATING SURFACE #4)

Key Plan:

Architect's Stamp:

Project:  
**Fifteen Great Road II LLC**  
15 Great Road,  
Littleton, MA.  
Client:  
Omni Properties, LLC  
200 Baker Ave, Suite 303  
Concord, MA 01742  
Tel: (978) 369-4884  
Project #: 12023  
Scale: As Noted

Issue: Progress Date: 5/17/2012

Revisions:	Date:

Drawing Title:  
Building Type TH4B3  
Exterior Elevations  
Sheet Number:  
**A.201**



200 Ayer Road, Harvard, MA 01451  
Tel: (978) 456-2800 Fax: (978) 456-2801  
www.maugel.com

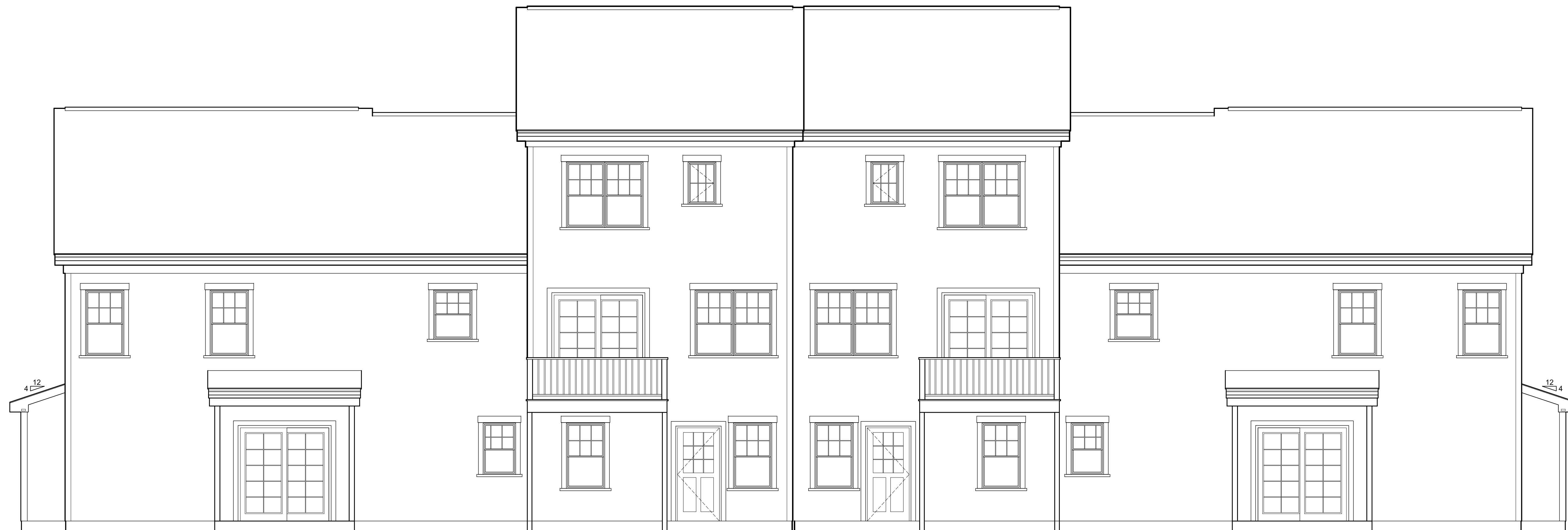
THESE DOCUMENTS AND ALL IDEAS, ARRANGEMENTS, DESIGNS AND PLANS INDICATED THEREON OR REPRESENTED THEREIN ARE OWNED BY AND REMAIN THE PROPERTY OF MAUGEL ARCHITECTS, INC. AND NO PART THEREOF SHALL BE REPRODUCED OR TRANSMITTED IN ANY FORM OR BY ANY MEANS, ELECTRONIC OR MECHANICAL, INCLUDING PHOTOCOPYING, RECORDING, OR BY ANY INFORMATION STORAGE AND RETRIEVAL SYSTEM, WITHOUT THE WRITTEN PERMISSION OF MAUGEL ARCHITECTS, INC.



**BUILDING TYPE TH4B3 - LEFT ELEVATION**

SCALE: 1/4"=1'-0"

4



**BUILDING TYPE TH4B3 - REAR ELEVATION**

SCALE: 1/4"=1'-0"

3

Notes:

**EXTERIOR WINDOW FRAMING & GLAZING**

**GENERAL WINDOW NOTES:**  
 1. ALL DIMENSIONS SHOWN ON ARCHITECTURAL DRAWINGS ARE ROUGH OPENINGS. SHOP DRAWINGS SHOULD REFLECT APPROPRIATE FRAME SIZES INCLUDING JOINT SIZES PER MANUFACTURERS SPECIFICATIONS.  
 2. G.C./SUB-CONTRACTOR TO FIELD VERIFY ALL OPENINGS PRIOR TO FABRICATION OF WINDOWS.  
 3. SUBMIT COLOR SAMPLES FOR FRAMES AND GLAZING AS PART OF THE SHOP DRAWING PROCESS.

**STOREFRONT SYSTEM:**  
 1. KAWNEER 451T - FRONT GLAZED  
 2. FRAME COLOR - CLEAR ANODIZED ALUMINUM

**CURTAINWALL SYSTEM:**  
 1. KAWNEER 1600 SYSTEM - 7-1/2" FRAME DEPTH  
 2. STEEL REINFORCING TO BE FABRICATOR DURING SHOP DRAWINGS AS REQUIRED TO MEET MANUFACTURE SPECIFICATIONS AND WIND LOAD REQUIREMENTS.  
 3. FRAME COLOR - CLEAR ANODIZED ALUMINUM.

**STOREFRONT & CURTAINWALL ENTRANCES:**  
 1. DOORS: KAWNEER 350 MEDIUM STILE  
 2. PANIC PUSH BAR (DOUBLE DOORS): DOOR-O-MATIC #1890 CONCEALED VERTICAL ROD  
 3. PANIC PUSH BAR (SINGLE DOOR): DOOR-O-MATIC #1790 RIM EXIT DEVICE  
 4. PUSH BAR AT NON-LATCHING DOORS: STYLE CO-12/CP11  
 5. PULLS: STYLE CO-12  
 6. CLOSER: NORTON 1805 BC, PARALLEL ARM MOUNTING W/ HEAVY DUTY ARM & HOLD OPEN  
 7. THRESHOLD: ALUMINUM THRESHOLD 1/2" MAX HEIGHT (ADA)

**GLAZING:**  
 1. ALL GLAZING TO BE LOW E-II  
 2. PROVIDE TEMPERED GLAZING IN ALL AREA REQUIRED BY CODE.  
 3. GLAZING COLORS:  
 G1: 1" INSULATED CLEAR ECLIPSE ADVANTAGE (LOW E)  
 -1/4" CLEAR ECLIPSE ADVANTAGE (LOW E SURFACE #2)  
 -1/2" AIR SPACE  
 -1/4" CLEAR ANNEALED  
 G2: 1" INSULATED CLEAR ECLIPSE ADVANTAGE (LOW E) SPANDREL  
 -1/4" CLEAR ECLIPSE ADVANTAGE (LOW E SURFACE #2)  
 -1/2" AIR SPACE  
 -1/4" CLEAR ANNEALED (SPANDREL COATING SURFACE #4)

Key Plan:

Architect's Stamp:

**Project:**  
**Fifteen Great Road II LLC**  
 15 Great Road,  
 Littleton, MA.  
**Client:**  
 Omni Properties, LLC  
 200 Baker Ave, Suite 303  
 Concord, MA 01742  
 Tel: (978) 369-4884

**Project #:** 12023  
**Scale:** As Noted  
**Issue:** Progress  
**Date:** 5/17/2012

Revisions:	Date:

**Drawing Title:**  
 Building Type TH4B3  
 Exterior Elevations  
**Sheet Number:**



200 Ayer Road, Harvard, MA 01451  
 Tel: (978) 456-2800 Fax: (978) 456-2801  
 www.maugel.com

THESE DOCUMENTS AND ALL IDEAS, ARRANGEMENTS, DESIGNS AND PLANS INDICATED THEREON OR REPRESENTED THEREON ARE OWNED BY AND REMAIN THE PROPERTY OF MAUGEL ARCHITECTS, INC. AND NO PART THEREOF SHALL BE REPRODUCED OR TRANSMITTED IN ANY FORM OR BY ANY MEANS, ELECTRONIC OR MECHANICAL, INCLUDING PHOTOCOPYING, RECORDING, OR BY ANY INFORMATION STORAGE AND RETRIEVAL SYSTEM, WITHOUT THE WRITTEN PERMISSION OF MAUGEL ARCHITECTS, INC.