

Notes:

EXTERIOR WINDOW
FRAMING & GLAZING

GENERAL WINDOW NOTES:
1. ALL DIMENSIONS SHOWN ON ARCHITECTURAL DRAWINGS ARE ROUGH OPENINGS. SHOP DRAWINGS SHOULD REFLECT APPROPRIATE FRAME SIZES INCLUDING JOINT SIZES PER MANUFACTURERS SPECIFICATIONS.
2. G.C./SUB-CONTRACTOR TO FIELD VERIFY ALL OPENINGS PRIOR TO FABRICATION OF WINDOWS.
3. SUBMIT COLOR SAMPLES FOR FRAMES AND GLAZING AS PART OF THE SHOP DRAWING PROCESS.

STOREFRONT SYTEM:
1. KAWNEER 451T - FRONT GLAZED
2. FRAME COLOR - CLEAR ANODIZED ALUMINUM

CURTAINWALL SYSTEM:
1. KAWNEER 1600 SYSTEM - 7-1/2" FRAME DEPTH
2. STEEL REINFORCING TO BY FABRICATOR DURING SHOP DRAWINGS AS REQUIRED TO MEET MANUFACTURE SPECIFICATIONS AND WIND LOAD REQUIREMENTS.
3. FRAME COLOR - CLEAR ANODIZED ALUMINUM.

STOREFRONT & CURTAINWALL ENTRANCES:
1. DOORS: KAWNEER 350 MEDIUM STILE
2. PANIC PUSH BAR (DOUBLE DOORS): DOOR-O-MATIC #1690 CONCEALED VERTICAL ROD
3. PANIC PUSH BAR (SINGLE DOOR): DOOR-O-MATIC #1790 RIM EXIT DEVICE
4. PUSH BAR AT NON-LATCHING DOORS: STYLE CO-12/CP11
5. PULLS: STYLE CO-12
6. CLOSER: NORTON 1605 BC, PARALLEL ARM MOUNTING W/ HEAVY DUTY ARM & HOLD OPEN
7. THRESHOLD: ALUMINUM THRESHOLD 1/2" MAX HEIGHT (ADA)

GLAZING:
1. ALL GLAZING TO BE LOW E-II
2. PROVIDE TEMPERED GLAZING IN ALL AREA REQUIRED BY CODE.
3. GLAZING COLORS:
G1: 1" INSULATED CLEAR ECLIPSE ADVANTAGE (LOW E)
-1/4" CLEAR ECLIPSE ADVANTAGE (LOW E SURFACE #2)
-1/2" AIR SPACE
-1/4" CLEAR ANNEALED
G2: 1" INSULATED CLEAR ECLIPSE ADVANTAGE (LOW E) SPANDREL
-1/4" CLEAR ECLIPSE ADVANTAGE (LOW E SURFACE #2)
-1/2" AIR SPACE
-1/4" CLEAR ANNEALED (SPANDREL COATING SURFACE #4)

Key Plan:

Architect's Stamp:

Project:
Fifteen Great Road II LLC
15 Great Road,
Littleton, MA.

Client:
Omni Properties, LLC
200 Baker Ave, Suite 303
Concord, MA 01742
Tel: (978) 369-4884

Project #: 12023
Scale: As Noted

Issue: Date:
Progress 6/5/2012

Revisions:	Date:

Drawing Title:
Building Type TH4CDU - Building #17
Exterior Elevations

Sheet Number:
A.201

MAUGEL ARCHITECTS INC. MA

200 Ayer Road, Harvard, MA 01451
Tel: (978) 456-2800 Fax: (978) 456-2801
www.maugel.com

THESE DOCUMENTS AND ALL IDEAS, ARRANGEMENTS, DESIGNS AND PLANS INDICATED THEREON OR REPRESENTED THEREIN ARE OWNED BY AND REMAIN THE PROPERTY OF MAUGEL ARCHITECTS, INC. AND NO PART THEREOF SHALL BE REPRODUCED OR TRANSMITTED IN ANY FORM OR BY ANY MEANS, ELECTRONIC OR MECHANICAL, INCLUDING PHOTOCOPYING, RECORDING, OR BY ANY INFORMATION STORAGE AND RETRIEVAL SYSTEM, WITHOUT THE WRITTEN PERMISSION OF MAUGEL ARCHITECTS, INC.



BUILDING TYPE TH4CDU - RIGHT ELEVATION

BUILDING #17

SCALE: 1/4"=1'-0"

1



BUILDING TYPE TH4CDU - FRONT ELEVATION

BUILDING #17

SCALE: 1/4"=1'-0"

2

Notes:

- EXTERIOR WINDOW FRAMING & GLAZING**
- GENERAL WINDOW NOTES:**
1. ALL DIMENSIONS SHOWN ON ARCHITECTURAL DRAWINGS ARE ROUGH OPENINGS. SHOP DRAWINGS SHOULD REFLECT APPROPRIATE FRAME SIZES INCLUDING JOINT SIZES PER MANUFACTURERS SPECIFICATIONS.
 2. G.C./SUB-CONTRACTOR TO FIELD VERIFY ALL OPENINGS PRIOR TO FABRICATION OF WINDOWS.
 3. SUBMIT COLOR SAMPLES FOR FRAMES AND GLAZING AS PART OF THE SHOP DRAWING PROCESS.
- STOREFRONT SYTEM:**
1. KAWNEER 451T - FRONT GLAZED
 2. FRAME COLOR - CLEAR ANODIZED ALUMINUM
- CURTAINWALL SYSTEM:**
1. KAWNEER 1600 SYSTEM - 7-1/2" FRAME DEPTH
 2. STEEL REINFORCING TO BY FABRICATOR DURING SHOP DRAWINGS AS REQUIRED TO MEET MANUFACTURE SPECIFICATIONS AND WIND LOAD REQUIREMENTS.
 3. FRAME COLOR - CLEAR ANODIZED ALUMINUM.
- STOREFRONT & CURTAINWALL ENTRANCES:**
1. DOORS: KAWNEER 350 MEDIUM STILE
 2. PANIC PUSH BAR (DOUBLE DOORS): DOOR-O-MATIC #1690 CONCEALED VERTICAL ROD
 3. PANIC PUSH BAR (SINGLE DOOR): DOOR-O-MATIC #1790 RIM EXIT DEVICE
 4. PUSH BAR AT NON-LATCHING DOORS: STYLE CO-12/CP11
 5. PULLS: STYLE CO-12
 6. CLOSER: NORTON 1605 BC, PARALLEL ARM MOUNTING W/ HEAVY DUTY ARM & HOLD OPEN
 7. THRESHOLD: ALUMINUM THRESHOLD 1/2" MAX HEIGHT (ADA)
- GLAZING:**
1. ALL GLAZING TO BE LOW E-II
 2. PROVIDE TEMPERED GLAZING IN ALL AREA REQUIRED BY CODE.
 3. GLAZING COLORS:
G1: 1" INSULATED CLEAR ECLIPSE ADVANTAGE (LOW E)
-1/4" CLEAR ECLIPSE ADVANTAGE (LOW E SURFACE #2)
-1/2" AIR SPACE
-1/4" CLEAR ANNEALED
G2: 1" INSULATED CLEAR ECLIPSE ADVANTAGE (LOW E) SPANDREL
-1/4" CLEAR ECLIPSE ADVANTAGE (LOW E SURFACE #2)
-1/2" AIR SPACE
-1/4" CLEAR ANNEALED (SPANDREL COATING SURFACE #4)

Key Plan:

Architect's Stamp:

Project:
Fifteen Great Road II LLC
15 Great Road,
Littleton, MA.

Client:
Omni Properties, LLC
200 Baker Ave, Suite 303
Concord, MA 01742
Tel: (978) 369-4884

Project #: 12023
Scale: As Noted

Issue:	Date:
Progress	6/5/2012

Revisions:	Date:

Drawing Title:
Building Type TH4CDU - Building #17
Exterior Elevations

Sheet Number:



200 Ayer Road, Harvard, MA 01451
Tel: (978) 456-2800 Fax: (978) 456-2801
www.maugel.com

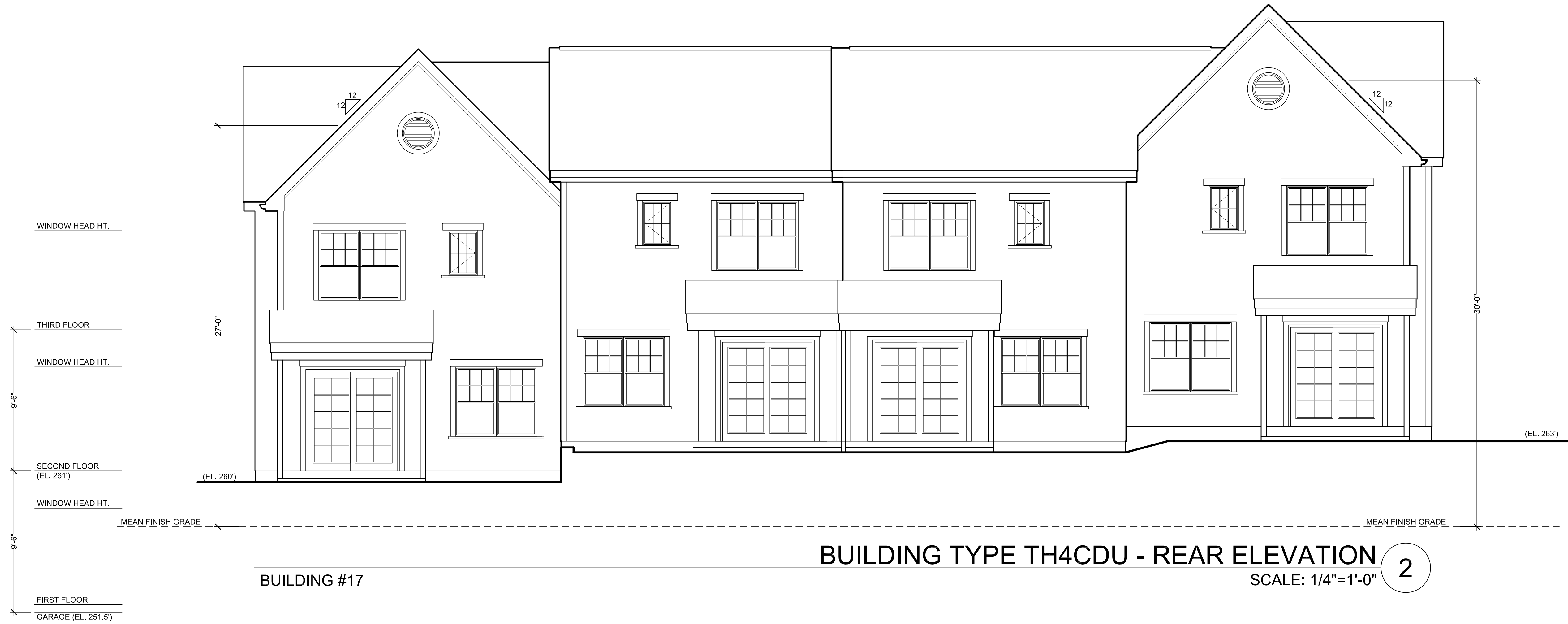
THESE DOCUMENTS AND ALL IDEAS, ARRANGEMENTS, DESIGNS AND PLANS INDICATED THEREON OR REPRESENTED THEREIN ARE OWNED BY AND REMAIN THE PROPERTY OF MAUGEL ARCHITECTS, INC. AND NO PART THEREOF SHALL BE REPRODUCED OR TRANSMITTED IN ANY FORM OR BY ANY MEANS, ELECTRONIC OR MECHANICAL, INCLUDING PHOTOCOPYING, RECORDING, OR BY ANY INFORMATION STORAGE AND RETRIEVAL SYSTEM, WITHOUT THE WRITTEN PERMISSION OF MAUGEL ARCHITECTS, INC.



BUILDING TYPE TH4CDU - LEFT ELEVATION 1

BUILDING #17

SCALE: 1/4"=1'-0"



BUILDING TYPE TH4CDU - REAR ELEVATION 2

BUILDING #17

SCALE: 1/4"=1'-0"