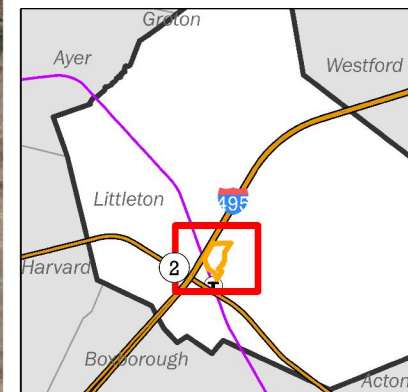


Littleton 40R Regional Context

- Littleton 40R Proposed Boundary
- 40R Subdistricts and Parcels
- MBTA Commuter Rail Station
- MBTA Commuter Rail Line
- Commuter Rail Station Half Mile Radius
- Sidewalks
- Major Roads

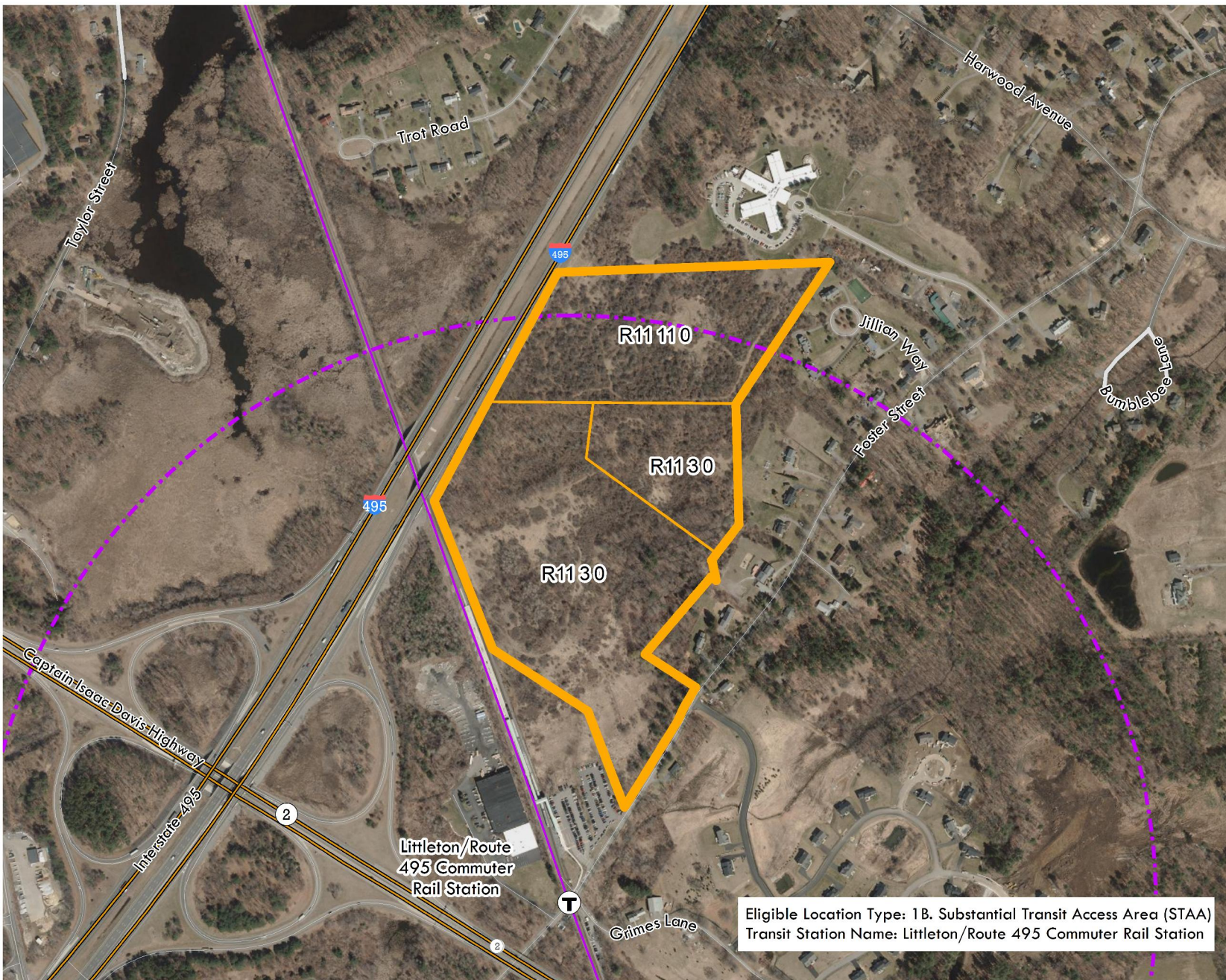
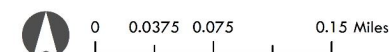


The information depicted on this map is for planning purposes only. It is not adequate for legal boundary definition, regulatory interpretation, or parcel-level analyses.

Produced by:
Metropolitan Area Planning Council
60 Temple Place, Boston, MA 02111
(617) 933-0700

Data Sources: MAPC, MassGIS, MassDOT

February 2021



Eligible Location Type: 1B. Substantial Transit Access Area (STAA)
Transit Station Name: Littleton/Route 495 Commuter Rail Station