

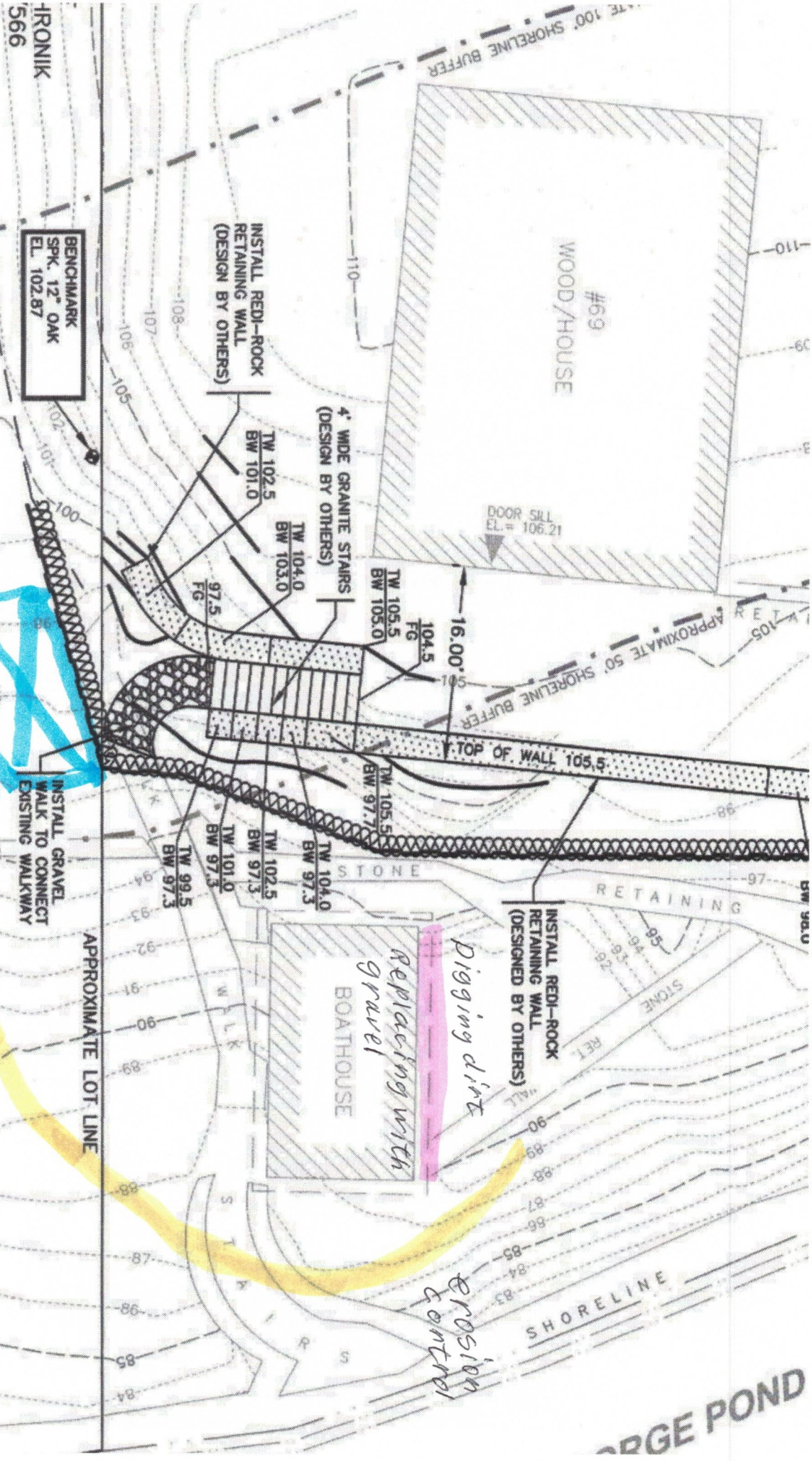
## **McNAMARA**

### **69 Matawanakee Trail, Littleton**

When we are in the demolition phase, demo debris will be hand carried or wheel barreled out. They will use demo picks and saws to take apart the old deck and the roof structure. Cams Demo will provide a 20 or 30 yard dumpster to take all the debris away that same day. It will be a one-day event. The dumpster will be located in the neighbor's driveway, roughly up to the property line of the two properties. I have indicated this on a drawing we were given from the town records (see attached).

Material delivery will be placed in the same location as the dumpster location. From there it will be brought down by hand or wheelbarrow in the case of gravel. All subs will take their daily trash away each day.

I have also indicated on the print from the town where we will be digging dirt and replacing it with gravel for drainage. Some dirt will be used around the structure, so water flows in the proper direction. If there's any leftover, we will either spread it around or take it away.



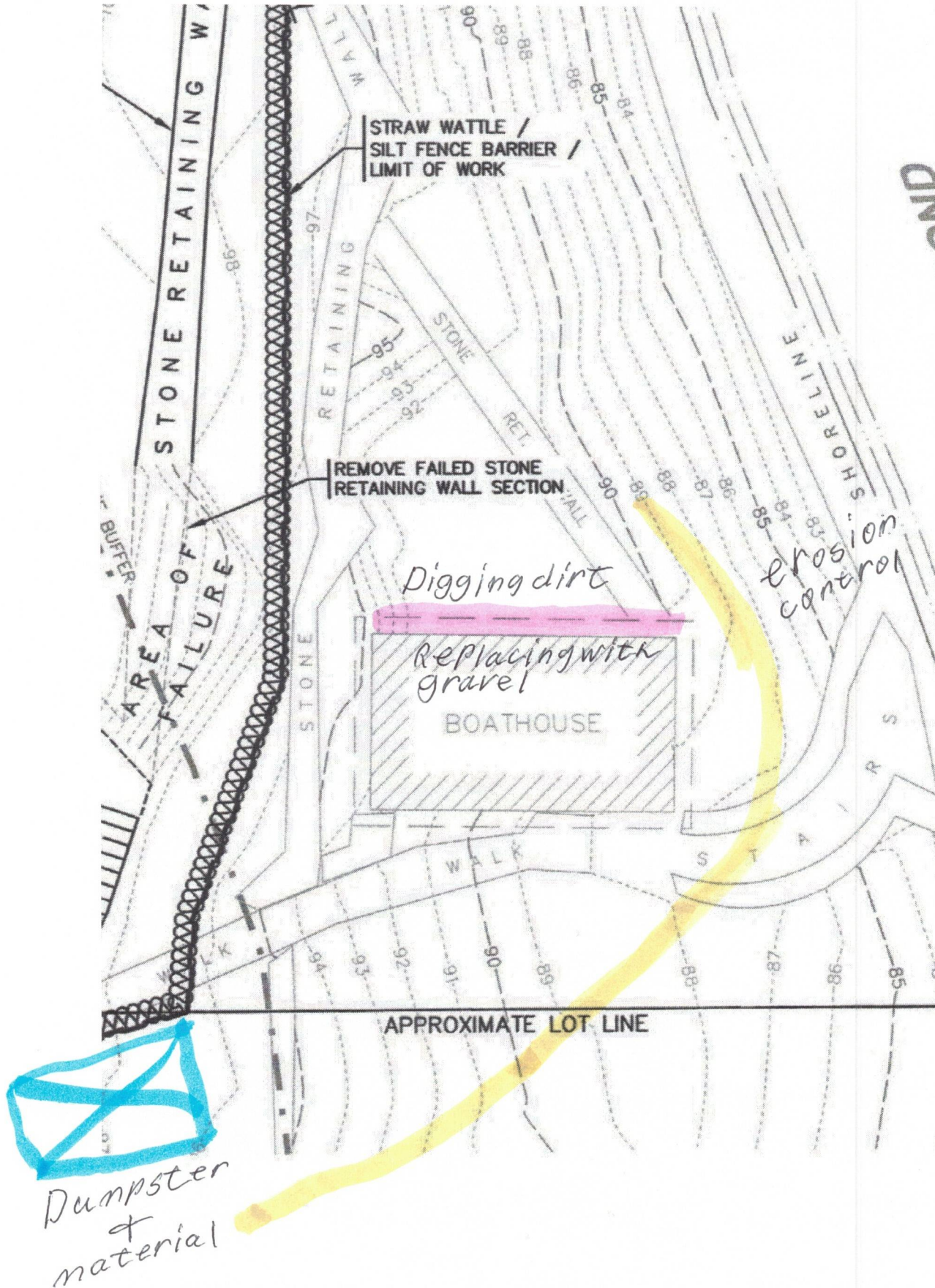
*dumpster  
material*

*Digging dirt  
replacing with  
gravel*

*erosion  
control*

**BARGE POND**





### 3.05 SITE GRADING

TO DISTURBED  
ON CHANNELS  
TO SUBDIVIDE  
OFF AND THE

/ FACILITIES

- WHERE APPLICABLE, FOLLOW EXCAVATION AND FILL PRACTICES LOCALIZE AND MINIMIZE SEDIMENT TRANSPORT.
- MONITOR SEDIMENTATION VOLUME IN TEMPORARY SEDIMENT BASINS AND CHECK DAMS. IN ALL AREAS EXCEPT THOSE THAT DO NOT PRE WITH REGARD TO FUTURE SOIL STABILITY, DRAINAGE, OR BEARIN PROPERLY DISPOSE OF TRAPPED SEDIMENTATION BEFORE BRINGING S
- IF SEDIMENTATION IS DISPOSED ONSITE, IT SHALL BE DEPOSITED CANNOT RE-TRANSPORT DOWNSTREAM.