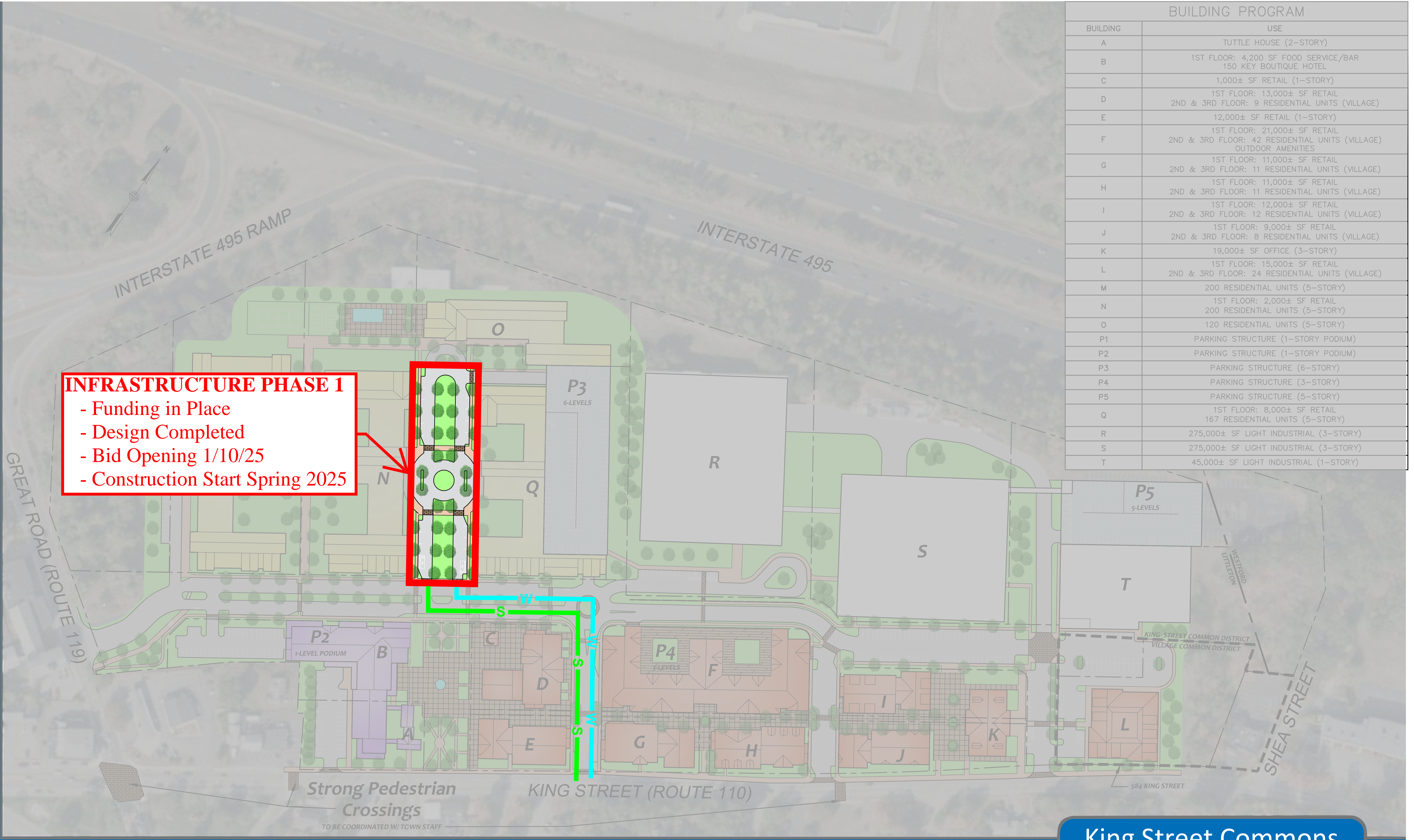


| BUILDING PROGRAM | |
|------------------|--|
| BUILDING | USE |
| A | TUTTLE HOUSE (2-STORY) |
| B | 1ST FLOOR: 4,200 SF FOOD SERVICE/BAR 150 KEY BOUTIQUE HOTEL |
| C | 1,000± SF RETAIL (1-STORY) |
| D | 1ST FLOOR: 13,000± SF RETAIL 2ND & 3RD FLOOR: 9 RESIDENTIAL UNITS (VILLAGE) |
| E | 12,000± SF RETAIL (1-STORY) |
| F | 1ST FLOOR: 21,000± SF RETAIL 2ND & 3RD FLOOR: 42 RESIDENTIAL UNITS (VILLAGE) OUTDOOR AMENITIES |
| G | 1ST FLOOR: 11,000± SF RETAIL 2ND & 3RD FLOOR: 11 RESIDENTIAL UNITS (VILLAGE) |
| H | 1ST FLOOR: 11,000± SF RETAIL 2ND & 3RD FLOOR: 11 RESIDENTIAL UNITS (VILLAGE) |
| I | 1ST FLOOR: 12,000± SF RETAIL 2ND & 3RD FLOOR: 12 RESIDENTIAL UNITS (VILLAGE) |
| J | 1ST FLOOR: 9,000± SF RETAIL 2ND & 3RD FLOOR: 8 RESIDENTIAL UNITS (VILLAGE) |
| K | 19,000± SF OFFICE (3-STORY) |
| L | 1ST FLOOR: 15,000± SF RETAIL 2ND & 3RD FLOOR: 24 RESIDENTIAL UNITS (VILLAGE) |
| M | 200 RESIDENTIAL UNITS (5-STORY) |
| N | 1ST FLOOR: 2,000± SF RETAIL 200 RESIDENTIAL UNITS (5-STORY) |
| O | 120 RESIDENTIAL UNITS (5-STORY) |
| P1 | PARKING STRUCTURE (1-STORY PODIUM) |
| P2 | PARKING STRUCTURE (1-STORY PODIUM) |
| P3 | PARKING STRUCTURE (6-STORY) |
| P4 | PARKING STRUCTURE (3-STORY) |
| P5 | PARKING STRUCTURE (5-STORY) |
| Q | 1ST FLOOR: 8,000± SF RETAIL 167 RESIDENTIAL UNITS (5-STORY) |
| R | 275,000± SF LIGHT INDUSTRIAL (3-STORY) |
| S | 275,000± SF LIGHT INDUSTRIAL (3-STORY) |
| T | 45,000± SF LIGHT INDUSTRIAL (1-STORY) |



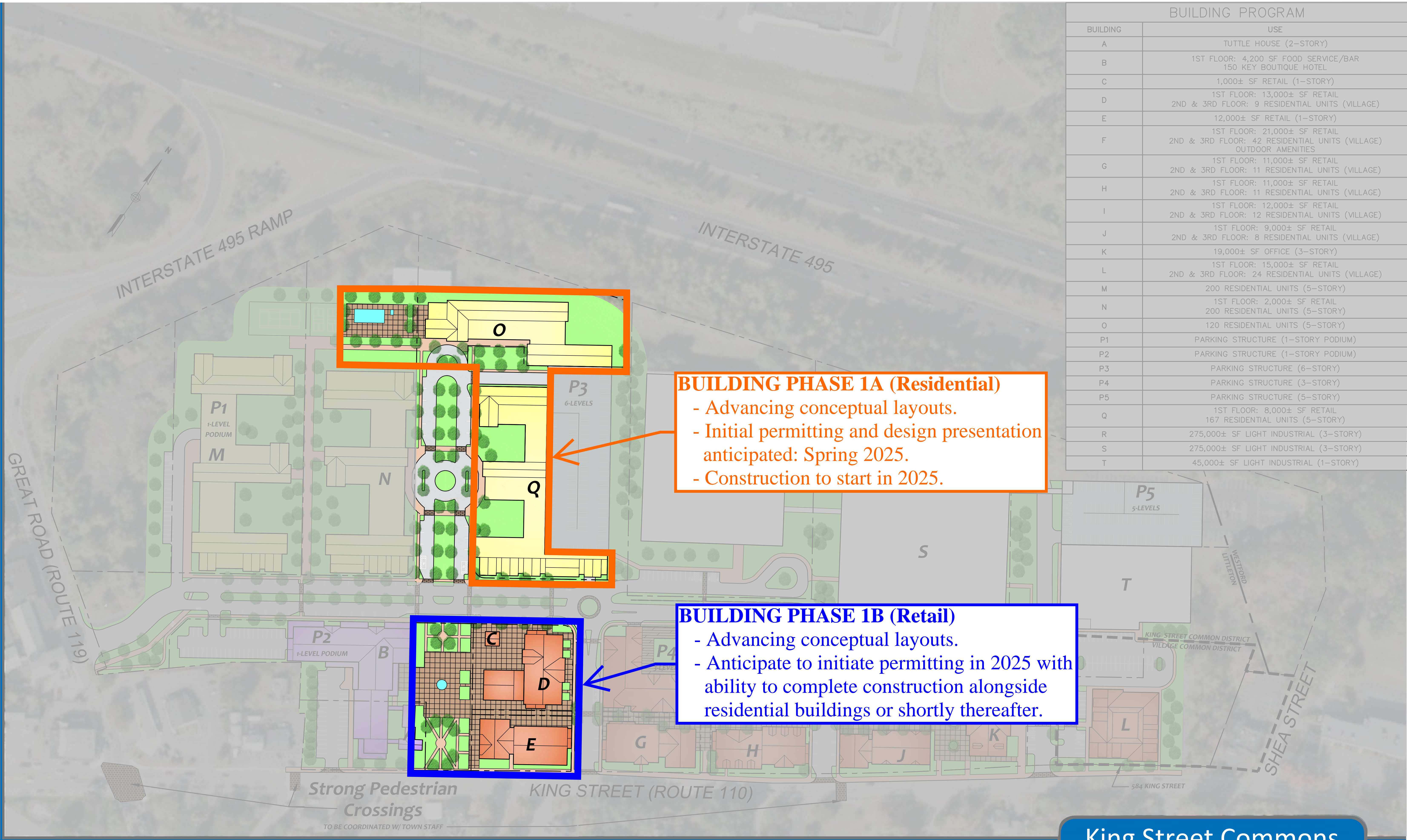
INFRASTRUCTURE PHASE 1

- Funding in Place
- Design Completed
- Bid Opening 1/10/25
- Construction Start Spring 2025

| BUILDING PROGRAM | |
|------------------|--|
| BUILDING | USE |
| A | TUTTLE HOUSE (2-STORY) |
| B | 1ST FLOOR: 4,200 SF FOOD SERVICE/BAR 150 KEY BOUTIQUE HOTEL |
| C | 1,000± SF RETAIL (1-STORY) |
| D | 1ST FLOOR: 13,000± SF RETAIL 2ND & 3RD FLOOR: 9 RESIDENTIAL UNITS (VILLAGE) |
| E | 12,000± SF RETAIL (1-STORY) |
| F | 1ST FLOOR: 21,000± SF RETAIL 2ND & 3RD FLOOR: 42 RESIDENTIAL UNITS (VILLAGE) OUTDOOR AMENITIES |
| G | 1ST FLOOR: 11,000± SF RETAIL 2ND & 3RD FLOOR: 11 RESIDENTIAL UNITS (VILLAGE) |
| H | 1ST FLOOR: 11,000± SF RETAIL 2ND & 3RD FLOOR: 11 RESIDENTIAL UNITS (VILLAGE) |
| I | 1ST FLOOR: 12,000± SF RETAIL 2ND & 3RD FLOOR: 12 RESIDENTIAL UNITS (VILLAGE) |
| J | 1ST FLOOR: 9,000± SF RETAIL 2ND & 3RD FLOOR: 8 RESIDENTIAL UNITS (VILLAGE) |
| K | 19,000± SF OFFICE (3-STORY) |
| L | 1ST FLOOR: 15,000± SF RETAIL 2ND & 3RD FLOOR: 24 RESIDENTIAL UNITS (VILLAGE) |
| M | 200 RESIDENTIAL UNITS (5-STORY) |
| N | 1ST FLOOR: 2,000± SF RETAIL 200 RESIDENTIAL UNITS (5-STORY) |
| O | 120 RESIDENTIAL UNITS (5-STORY) |
| P1 | PARKING STRUCTURE (1-STORY PODIUM) |
| P2 | PARKING STRUCTURE (1-STORY PODIUM) |
| P3 | PARKING STRUCTURE (6-STORY) |
| P4 | PARKING STRUCTURE (3-STORY) |
| P5 | PARKING STRUCTURE (5-STORY) |
| Q | 1ST FLOOR: 8,000± SF RETAIL 167 RESIDENTIAL UNITS (5-STORY) |
| R | 275,000± SF LIGHT INDUSTRIAL (3-STORY) |
| S | 275,000± SF LIGHT INDUSTRIAL (3-STORY) |
| T | 45,000± SF LIGHT INDUSTRIAL (1-STORY) |

King Street Commons

550 & 584 King Street
Littleton, Massachusetts



| BUILDING PROGRAM | |
|------------------|--|
| BUILDING | USE |
| A | TUTTLE HOUSE (2-STORY) |
| B | 1ST FLOOR: 4,200 SF FOOD SERVICE/BAR 150 KEY BOUTIQUE HOTEL |
| C | 1,000± SF RETAIL (1-STORY) |
| D | 1ST FLOOR: 13,000± SF RETAIL 2ND & 3RD FLOOR: 9 RESIDENTIAL UNITS (VILLAGE) |
| E | 12,000± SF RETAIL (1-STORY) |
| F | 1ST FLOOR: 21,000± SF RETAIL 2ND & 3RD FLOOR: 42 RESIDENTIAL UNITS (VILLAGE) OUTDOOR AMENITIES |
| G | 1ST FLOOR: 11,000± SF RETAIL 2ND & 3RD FLOOR: 11 RESIDENTIAL UNITS (VILLAGE) |
| H | 1ST FLOOR: 11,000± SF RETAIL 2ND & 3RD FLOOR: 11 RESIDENTIAL UNITS (VILLAGE) |
| I | 1ST FLOOR: 12,000± SF RETAIL 2ND & 3RD FLOOR: 12 RESIDENTIAL UNITS (VILLAGE) |
| J | 1ST FLOOR: 9,000± SF RETAIL 2ND & 3RD FLOOR: 8 RESIDENTIAL UNITS (VILLAGE) |
| K | 19,000± SF OFFICE (3-STORY) |
| L | 1ST FLOOR: 15,000± SF RETAIL 2ND & 3RD FLOOR: 24 RESIDENTIAL UNITS (VILLAGE) |
| M | 200 RESIDENTIAL UNITS (5-STORY) |
| N | 1ST FLOOR: 2,000± SF RETAIL 200 RESIDENTIAL UNITS (5-STORY) |
| O | 120 RESIDENTIAL UNITS (5-STORY) |
| P1 | PARKING STRUCTURE (1-STORY PODIUM) |
| P2 | PARKING STRUCTURE (1-STORY PODIUM) |
| P3 | PARKING STRUCTURE (6-STORY) |
| P4 | PARKING STRUCTURE (3-STORY) |
| P5 | PARKING STRUCTURE (5-STORY) |
| Q | 1ST FLOOR: 8,000± SF RETAIL 167 RESIDENTIAL UNITS (5-STORY) |
| R | 275,000± SF LIGHT INDUSTRIAL (3-STORY) |
| S | 275,000± SF LIGHT INDUSTRIAL (3-STORY) |
| T | 45,000± SF LIGHT INDUSTRIAL (1-STORY) |

BUILDING PHASE 1A (Residential)

- Advancing conceptual layouts.
- Initial permitting and design presentation anticipated: Spring 2025.
- Construction to start in 2025.

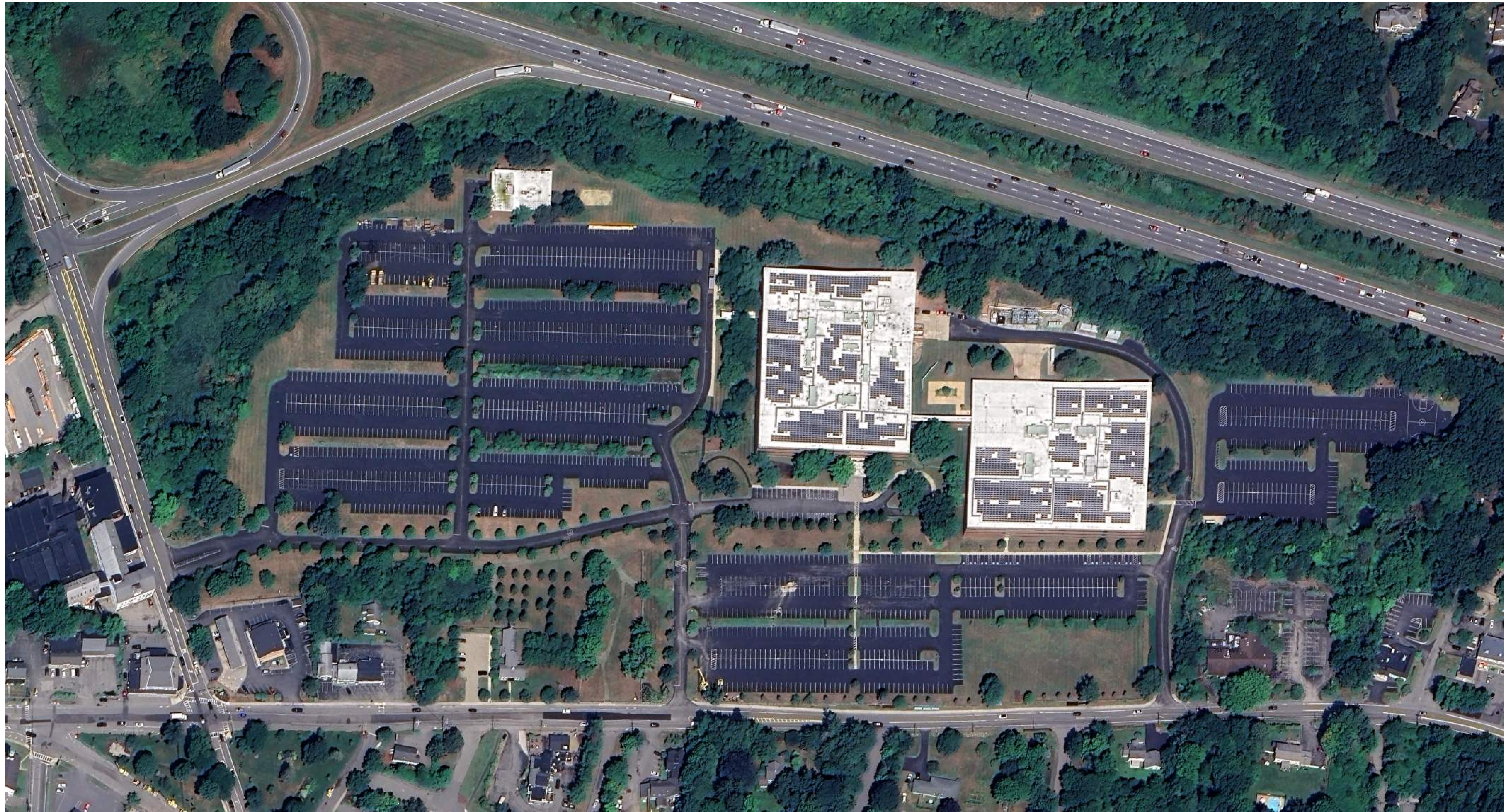
BUILDING PHASE 1B (Retail)

- Advancing conceptual layouts.
- Anticipate to initiate permitting in 2025 with ability to complete construction alongside residential buildings or shortly thereafter.

King Street Commons

550 & 584 King Street
Littleton, Massachusetts

DEMO AND GENERAL PROPERTY UPDATES



EXCITING CHANGES COMING IN 2025!

