

Jet Field
Littleton, MA

Lighting System

Pole/Fixture Summary						
Pole ID	Pole Height	Mtg Height	Fixture Qty	Luminaire Type	Load	Circuit
A1-A2	70'	70'	1	TLC-LED-1200	1.17 kW	A
		70'	2	TLC-LED-900	1.76 kW	A
		16'	1	TLC-BT-575	0.57 kW	A
B1-B2	70'	70'	4	TLC-LED-1200	4.68 kW	A
		16'	1	TLC-BT-575	0.57 kW	A
4			18		17.52 kW	

Circuit Summary			
Circuit	Description	Load	Fixture Qty
A	Jet Field	17.52 kW	18

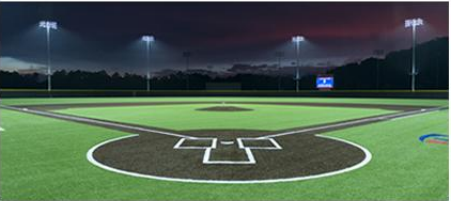
Fixture Type Summary							
Type	Source	Wattage	Lumens	L90	L80	L70	Quantity
TLC-BT-575	LED 5700K - 75 CRI	575W	52,000	>120,000	>120,000	>120,000	4
TLC-LED-1200	LED 5700K - 75 CRI	1170W	150,000	>120,000	>120,000	>120,000	10
TLC-LED-900	LED 5700K - 75 CRI	880W	104,000	>120,000	>120,000	>120,000	4

Single Luminaire Amperage Draw Chart							
Driver Specifications (.90 min power factor)		Line Amperage Per Luminaire (max draw)					
Single Phase Voltage		208 (60)	220 (60)	240 (60)	277 (60)	347 (60)	380 (60)
TLC-LED-1200		6.9	6.5	6.0	5.2	4.2	3.8
TLC-LED-900		5.2	4.9	4.5	3.9	3.1	2.9
TLC-BT-575		3.3	3.2	2.9	2.5	2.0	1.8

Light Level Summary

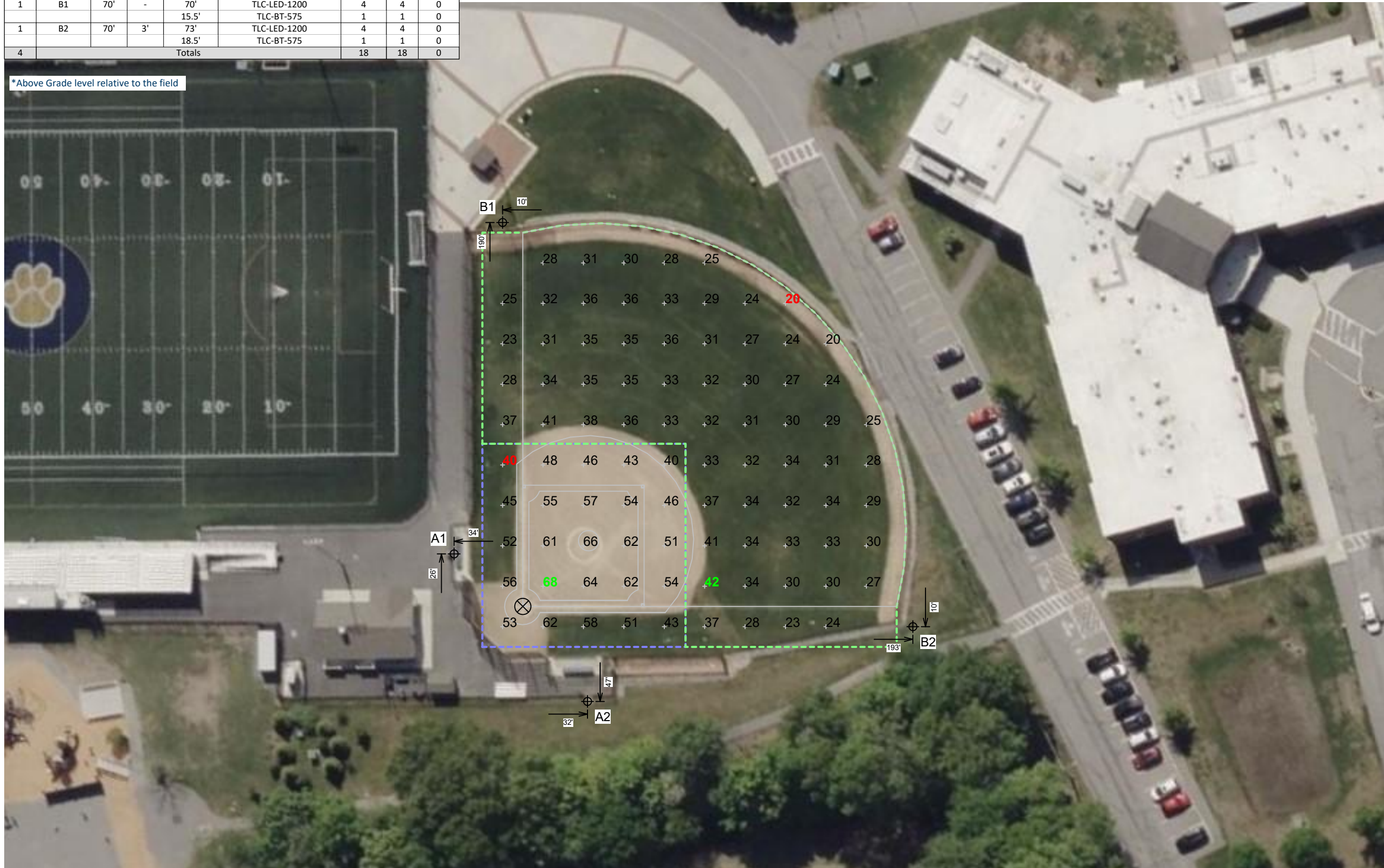
Calculation Grid Summary								
Grid Name	Calculation Metric	Illumination Ave					Circuits	Fixture Qty
		Ave	Min	Max	Max/Min	Ave/Min		
Jet Field (Infield)	Horizontal Illuminance	53.44	40	68	1.71	1.35	A	18
Jet Field (Outfield)	Horizontal Illuminance	31.04	20	42	2.10	1.55	A	18
Spill @ 3ft.	Horizontal Illuminance	0.0213	0.00	0.09	-	-	A	18
Spill @ 5ft.	Max Candela Metric	1519.5188	0.00	6341.62	-	-	A	18
Spill @ 5ft.	Max Vertical Illuminance Metric	0.0513	0.00	0.21	-	-	A	18

From Hometown to Professional



Equipment List For Areas Shown								
Pole				Luminaires				
QTY	LOCATION	SIZE	GRADE ELEVATION	ABOVE GRADE LEVEL	LUMINAIRE TYPE	QTY/POLE	THIS GRID	OTHER GRIDS
2	A1-A2	70'	-	70'	TLC-LED-1200	1	1	0
				70'	TLC-LED-900	2	2	0
				15.5'	TLC-BT-575	1	1	0
1	B1	70'	-	70'	TLC-LED-1200	4	4	0
				15.5'	TLC-BT-575	1	1	0
1	B2	70'	3'	73'	TLC-LED-1200	4	4	0
				18.5'	TLC-BT-575	1	1	0
4	Totals					18	18	0

*Above Grade level relative to the field



Jet Field
Littleton, MA

Grid Summary	
Name:	Jet Field
Size:	185'/205'/185' - basepath 60'
Spacing:	20.0' x 20.0'
Height:	3.0' above grade

Illumination Summary		
	MAINTAINED HORIZONTAL FOOTCANDLES	
	Infield	Outfield
Guaranteed Average:	50	30
Scan Average:	53.44	31.04
Maximum:	68	42
Minimum:	40	20
Avg/Min:	1.35	1.55
Guaranteed Max/Min:	2	2.5
Max/Min:	1.71	2.10
UG (adjacent pts):	1.26	1.37
CU:	0.64	
No. of Points:	25	65
LUMINAIRE INFORMATION		
Applied Circuits:	A	
No. of Luminaires:	18	
Total Load:	17.52 kW	

Guaranteed Performance: The ILLUMINATION described above is guaranteed per your Musco Warranty document and includes a 0.95 dirt depreciation factor.

Field Measurements: Individual field measurements may vary from computer-calculated predictions and should be taken in accordance with IESNA RP-6-15.

Electrical System Requirements: Refer to Amperage Draw Chart and/or the "Musco Control System Summary" for electrical sizing.

Installation Requirements: Results assume ± 3% nominal voltage at line side of the driver and structures located within 3 feet (1m) of design locations.

Littleton, MA

	Name: Spill @ 3ft.
	Spacing: 30.0'
	Height: 3.0' above grade

INITIAL HORIZONTAL FOOTCANDLES	
	Entire Grid
Scan Average:	0.0213
Maximum:	0.09
Minimum:	0.00
CU:	0.00
No. of Points:	55
LUMINAIRE INFORMATION	
Applied Circuits:	A
No. of Luminaires:	18
Total Load:	17.52 kW



Installation Requirements: Results assume $\pm 3\%$ nominal voltage at line side of the driver and structures located within 3 feet (1m) of design locations.



ILLUMINATION SUMMARY



ENGINEERED DESIGN By: T.Lanphier • File #198613D • 03-Feb-25

Pole location(s)  dimensions are relative to 0,0 reference point(s) 

Jet Field
Littleton, MA

Grid Summary	
Name:	Spill @ 5ft.
Spacing:	30.0'
Height:	5.0' above grade

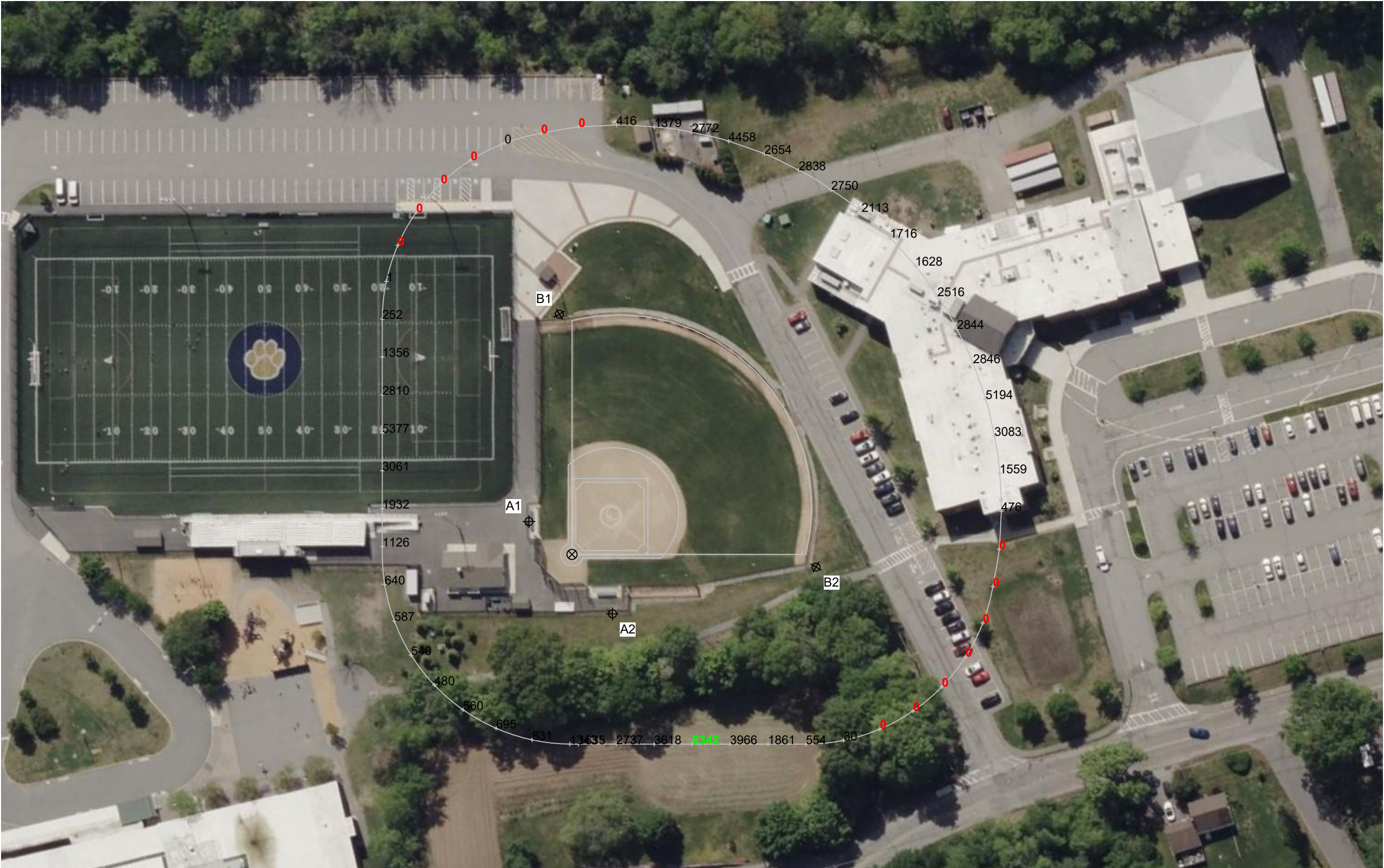
Illumination Summary	
	INITIAL CANDELA (PER FIXTURE)
	Entire Grid
Scan Average:	1519.5188
Maximum:	6341.62
Minimum:	0.00
CU:	0.00
No. of Points:	55
LUMINAIRE INFORMATION	
Applied Circuits:	A
No. of Luminaires:	18
Total Load:	17.52 kW

Guaranteed Performance: The ILLUMINATION described above is guaranteed per your Musco Warranty document.

Field Measurements: Individual field measurements may vary from computer-calculated predictions and should be taken in accordance with IESNA RP-6-15.

Electrical System Requirements: Refer to Amperage Draw Chart and/or the "Musco Control System Summary" for electrical sizing.

Installation Requirements: Results assume ± 3% nominal voltage at line side of the driver and structures located within 3 feet (1m) of design locations.



Jet Field
Littleton, MA

Grid Summary	
Name:	Spill @ 5ft.
Spacing:	30.0'
Height:	5.0' above grade

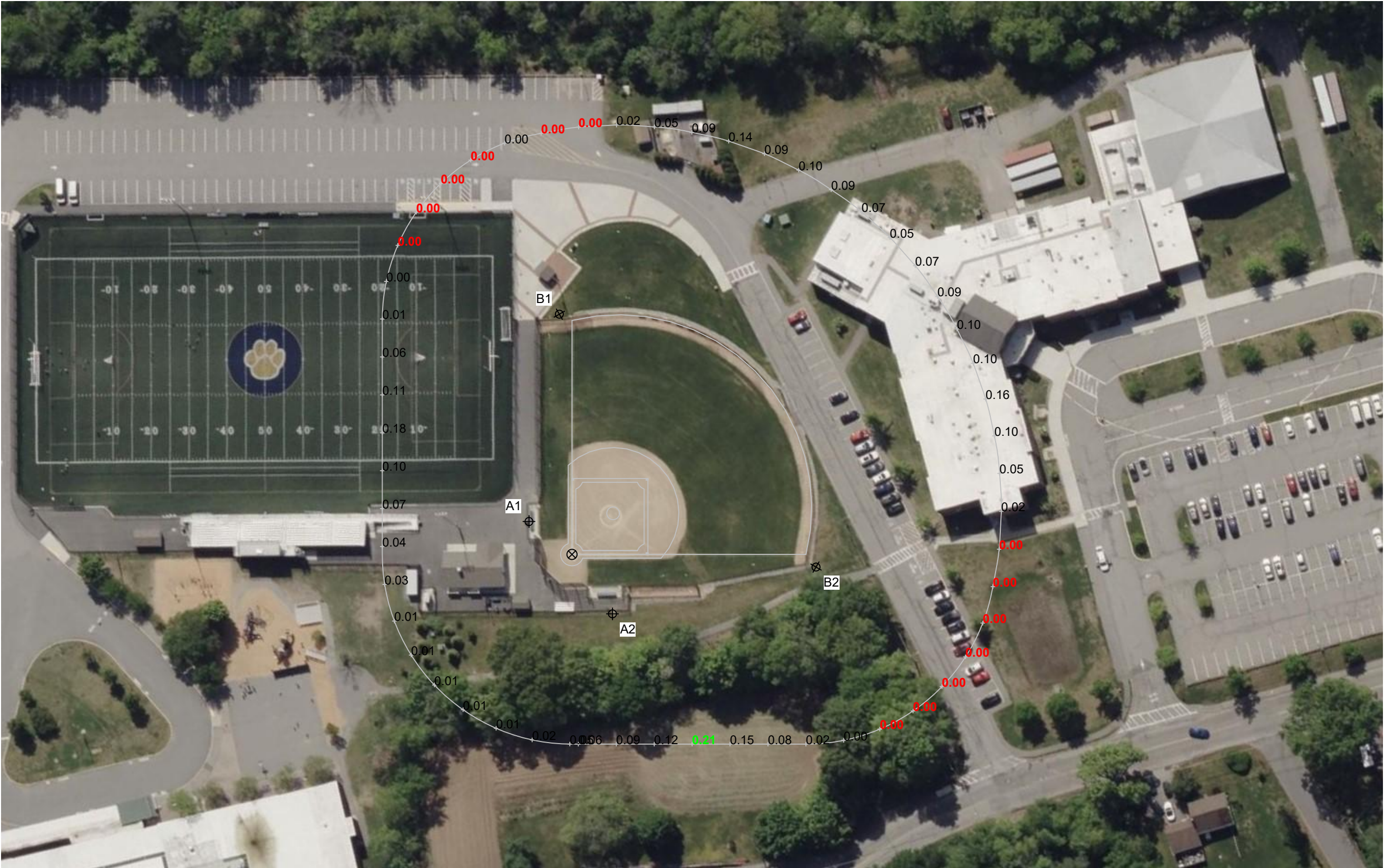
Illumination Summary	
	INITIAL MAX VERTICAL FOOTCANDLES
	Entire Grid
Scan Average:	0.0513
Maximum:	0.21
Minimum:	0.00
CU:	0.00
No. of Points:	55
LUMINAIRE INFORMATION	
Applied Circuits:	A
No. of Luminaires:	18
Total Load:	17.52 kW

Guaranteed Performance: The ILLUMINATION described above is guaranteed per your Musco Warranty document.

Field Measurements: Individual field measurements may vary from computer-calculated predictions and should be taken in accordance with IESNA RP-6-15.

Electrical System Requirements: Refer to Amperage Draw Chart and/or the "Musco Control System Summary" for electrical sizing.

Installation Requirements: Results assume ± 3% nominal voltage at line side of the driver and structures located within 3 feet (1m) of design locations.





0' 80' 160'

Pole location(s) \oplus dimensions are relative to 0,0 reference point(s) \otimes

Driver Specifications (.90 min power factor)	Line Amperage Per Luminaire (max draw)						
Single Phase Voltage	208 (60)	220 (60)	240 (60)	277 (60)	347 (60)	380 (60)	480 (60)
TLC-LED-1200	6.9	6.5	6.0	5.2	4.2	3.8	3.0
TLC-LED-900	5.2	4.9	4.5	3.9	3.1	2.9	2.3
TLC-BT-575	3.3	3.2	2.9	2.5	2.0	1.8	1.5



Not to be reproduced in whole or part without the written consent of Musco Sports Lighting, LLC. ©1981, 2025 Musco Sports Lighting, LLC.

EQUIPMENT LAYOUT