

Jet Softball Field Lights Project

School Committee Meeting
February 27, 2025

Dave McManus
LYBS President



Littleton Youth Baseball & Softball ("LYBS")



- Recreational youth baseball and softball league
- Non-profit 501(c)3, volunteer-staffed organization
- Player ages range from pre-K to early high school years
- Programs/seasons operate in spring, summer, and fall
 - 420+ registrants in 2024, ~50% in spring season alone
 - Spring registrants +10% over past 2 years
 - Registrant mix is ~2/3 baseball, ~1/3 softball
- Primary goals are (1) to ensure the kids have fun, (2) teach and develop their skills in the games of baseball or softball, and (3) enable/empower them to become great teammates and leaders
- Work closely with Littleton Parks & Recreation and LHS Athletic Dept.

www.littletonbaseball.org



Proposed Project



INSTALLATION OF LIGHTS @ JET SOFTBALL FIELD

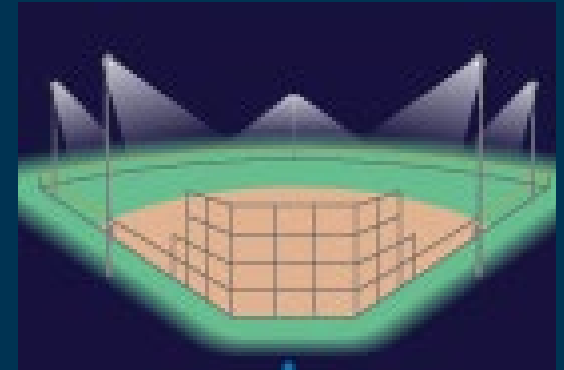


- LYBS to fund 100% of the project costs
- LYBS to manage the project and work with town boards, committees, and entities as necessary and appropriate
- Upon completion of project, LYBS will gift the lights to Littleton Public Schools



Project Rationale

- Jet Field (renovated in 2018) is the primary softball field used by all LHS Varsity, LHS JV, and LYBS softball programs
- Field scheduling (games & practices) has become very challenging
 - LHS Varsity/JV games typically start at 4:00, with LYBS games scheduled at 6:15 in these instances (most unfortunately start later)
- Lights will extend usable field time and accommodate program growth
- Lights would “lift up” townwide softball, and make playing at Jet Field an even better experience
- LYBS able to accumulate funds over recent years thanks to incredibly generous donors, annual fundraisers, and our sponsors. LYBS Board is committed to putting funds to use to benefit the community and believes this project is an excellent opportunity to do so.

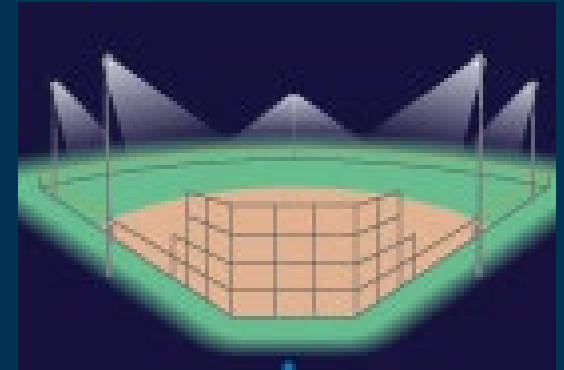


***FIELD LIGHTS WOULD BENEFIT ALL YOUTH SOFTBALL
INCLUDING JV & VARSITY TEAMS***

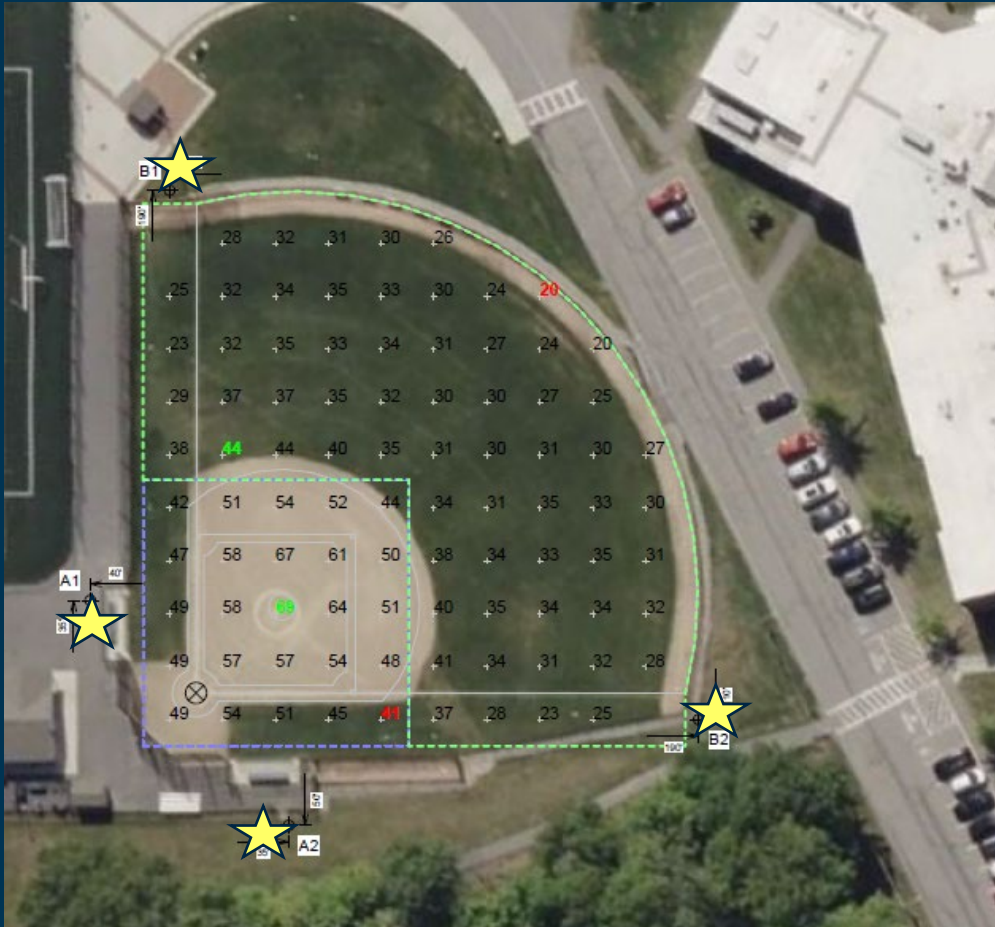
Project Summary



- Installation in July 2025, to minimize impact on school community
 - Onsite work estimated to take 3-4 weeks, weather permitting
 - Preliminary test drilling (1 day onsite) targeted to occur in March
- Non-availability of Jet Field during July installation would have limited impact on programs
- Total Estimated Project Costs = \$163k (details on upcoming slide)
 - Potentially could go up to as high as \$208k
- Vendors engaged all reference-checked & highly recommended:
 - Musco Sports Lighting (www.musco.com)
 - Systems Electrical Services (www.systemselectricalservices.com)
 - Seaboard Drilling (www.seaboarldrilling.com)



Project Design



- Four (4) light poles, marked by ★ on the map
- Lights utilize Musco's patented "BallTracker" technology, which improves night-time field illumination and experience while also reducing impact on neighbors
 - [CLICK FOR DEMO VIDEO](#)
- Power will be sourced from existing electrical panel near the field (already have verified sufficient capacity exists)
- Impact of lights to residential neighbors would be very minimal based on Musco's design analysis



Project Costs

| Description | Vendor | Amount | Notes |
|---|-----------------------------|------------------|--|
| Lighting Equipment | Musco Sports Lighting | \$85,000* | Proposal in-hand |
| Installation (July) | Systems Electrical Services | \$69,980 | Proposal in-hand |
| Preliminary Test Drilling (March) | Seaboard Drilling | \$5,195 | Proposal in-hand – purpose is to determine if potential additional installation costs below will be incurred |
| Permits & other costs | | \$3,000 | Provisional estimate |
| TOTAL BASE COSTS | | \$163,175 | |
| Potential Additional Installation Costs (upper limit) | Systems Electrical Services | \$44,860 | Proposal in-hand |
| TOTAL POTENTIAL COSTS | | \$208,035 | |

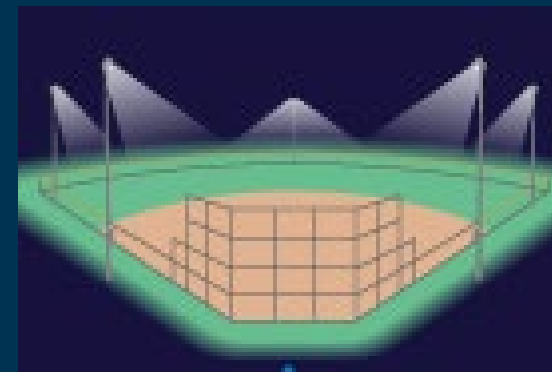
* \$50,000 deposit paid



Warranties & Operating Costs

- Lighting equipment includes maintenance-free 25-year warranty (www.musco.com/warranty/)
- Installation carries 1-year warranty
- Projected Electric Utility Costs, based on current LELWD residential rates:

| | |
|---------------------------------------|-------------------------|
| Total Lighting KW | 17.52 |
| Cost per KWH | <u>\$ 0.13627</u> |
| Hourly cost | <u>\$ 2.38745</u> |
| Estimated usage hours per night | <u>4.00</u> |
| Daily cost | <u>\$ 9.54980</u> |
| Estimated usage days/year* | <u>60</u> |
| Estimated annual electric cost | <u>\$ 572.99</u> |

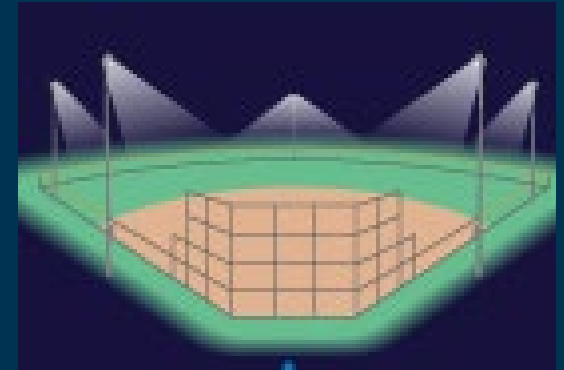


* Conservative estimate for games & practices

Next Steps



- Requesting project approval from School Committee
- Planning Board hearing planned for March 13



Thank You!

