

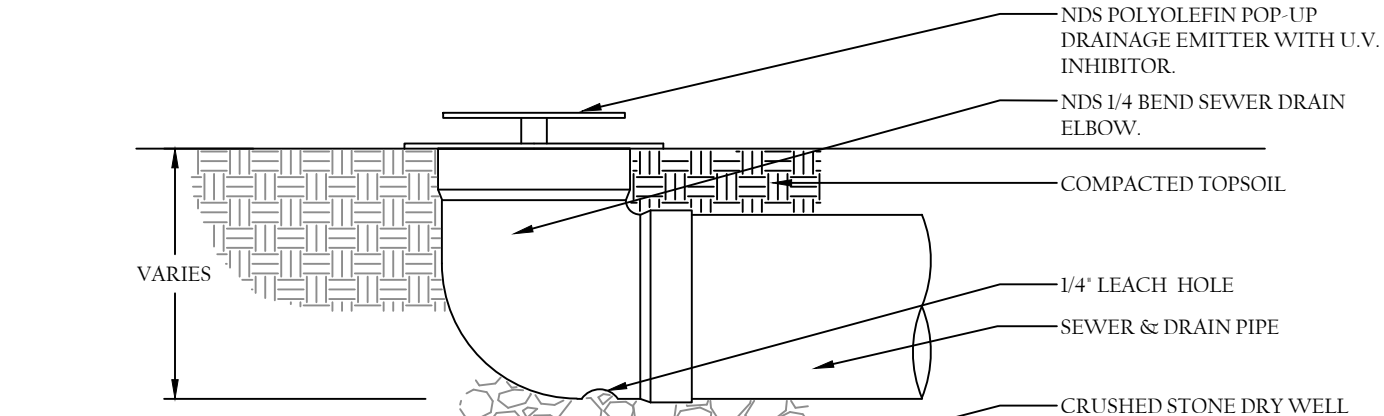
LOCUS MAP
1" = 2000'

LEGEND

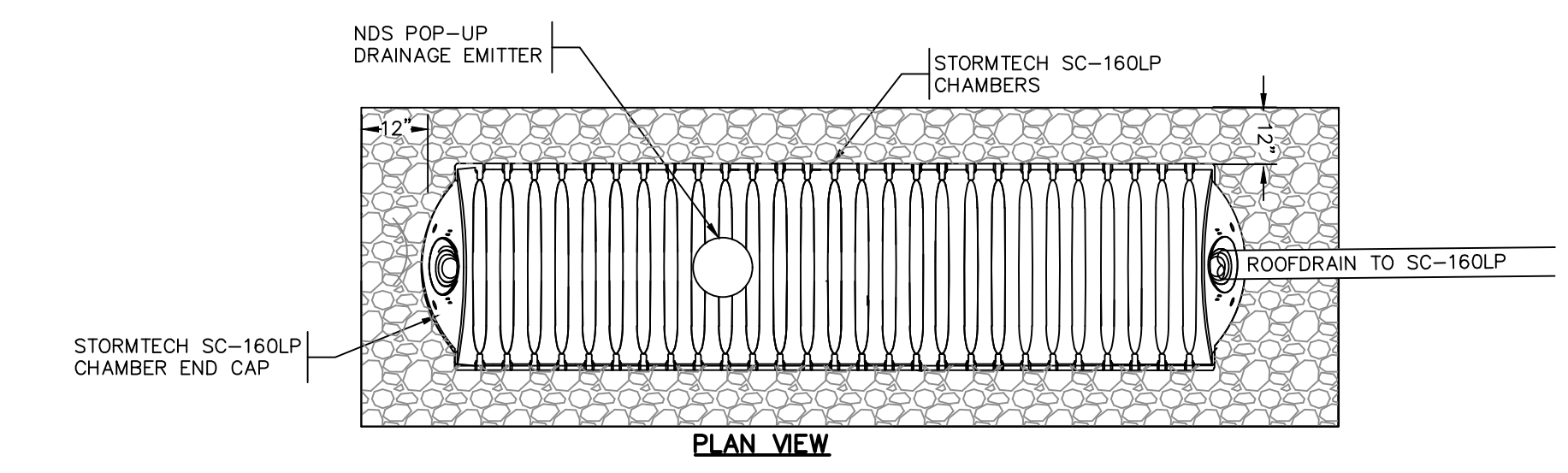
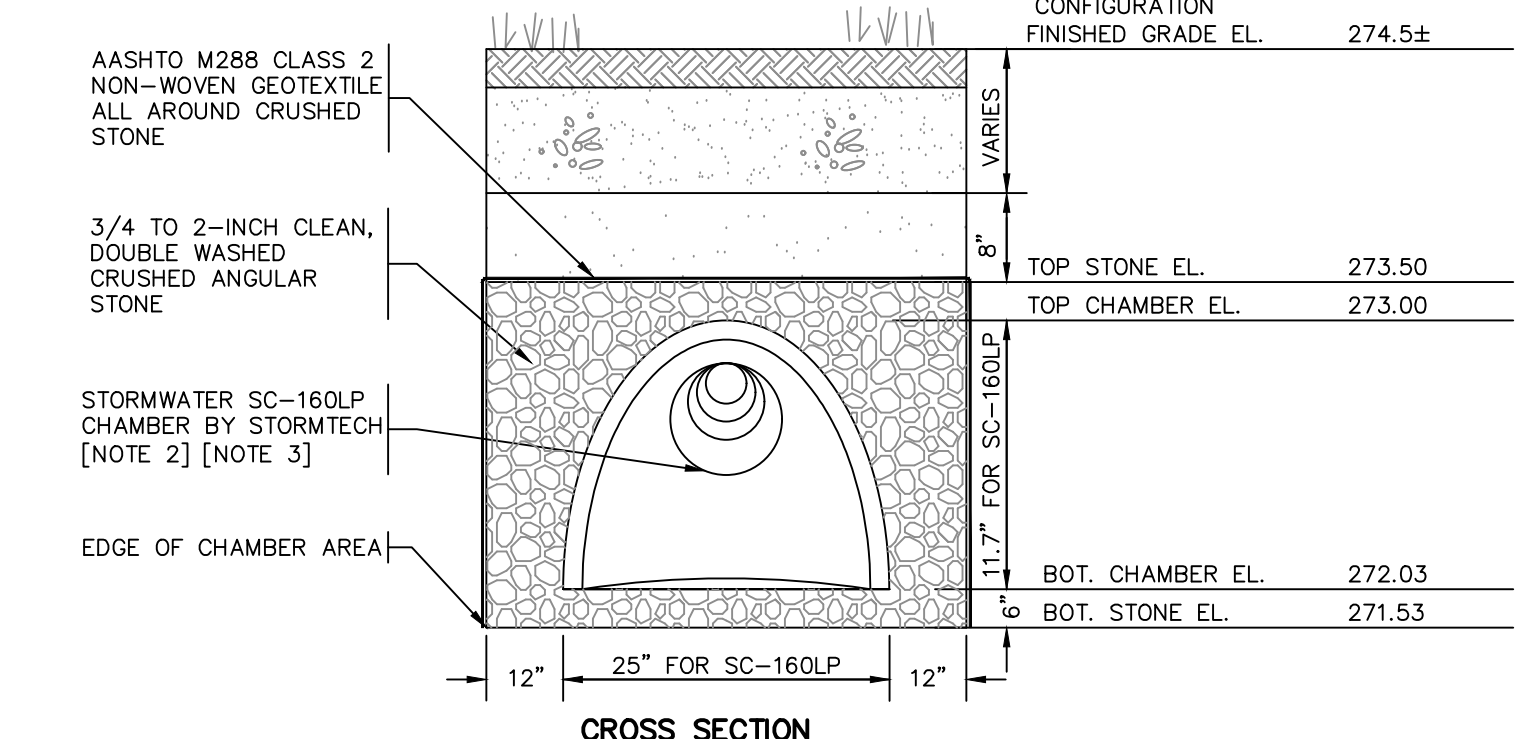
EXISTING	PROPOSED

ABBREVIATIONS

EL	ELEVATION	HDPE	HIGH DENSITY POLYETHYLENE
SF	SQUARE FEET	N/F	NOW OR FORMERLY
AC	ACRES	WF	WETLAND FLAG
FT	FEET	TW	TOP OF WALL
BT	BITUMINOUS	BW	BOTTOM OF WALL
FG	FINISH GRADE	LS	LANDSCAPING
FF	FINISH FLOOR		



NDS POP-UP DRAINAGE EMITTER
NOT TO SCALE



NOTES:
[1] ALL CHAMBERS MAY NOT BE SHOWN, SEE SITE PLAN FOR NUMBER AND CONFIGURATION.
[2] GRANULAR WELL-GRADED SOIL/AGGREGATE MIXTURES, <35% FINES, COMPACT IN 6" LIFTS TO MINIMUM 95% STANDARD PROCTOR DENSITY.
[3] SEE STORMTECH CHAMBER SYSTEMS DESIGN MANUAL FOR MANUFACTURERS SPECIFICATIONS AND MATERIAL SPECIFICATIONS.

SUBSURFACE RECHARGE CHAMBER SYSTEM (STORMTECH SC-160LP)
NOT TO SCALE

EROSION AND SEDIMENT CONTROL REQUIREMENTS

PART 1 - GENERAL

- 1.01 SUMMARY
A. FURNISH, INSTALL, AND MAINTAIN TEMPORARY AND PERMANENT EROSION AND SEDIMENT CONTROL MEASURES, SUCH AS, BUT NOT NECESSARILY LIMITED TO, STRAW WATTLE AND SILT FENCE BARRIERS, RIPRAP, DIVERSION CHANNELS AND BERMS, CHECK DAMS, STRATEGICALLY LOCATED STOCKPILES, SEDIMENT BASINS, MULCH, AND SEED MIX (HEREINAFTER "CONTROL MEASURES") ADEQUATE TO PREVENT THE CONVEYANCE OF EROSION PRODUCTS (E.G. SOIL, MULCH, SOD) OFF SITE, OR INTO ENVIRONMENTALLY SENSITIVE AREAS, OR INTO AREAS WHERE WORK WILL BE ADVERSELY IMPACTED. ENVIRONMENTALLY SENSITIVE AREAS INCLUDE, BUT ARE NOT NECESSARILY LIMITED TO, WETLANDS, TRIBUTARIES TO WETLANDS, WETLAND BUFFER ZONES, INTERMITTENT AND PERENNIAL STREAMS / RIVERS, AND THEIR ATTENDANT BUFFER ZONES.
1. REFER TO DRAWINGS FOR LOCATION AND DETAILS OF CONTROL MEASURES REQUIRED TO COMMENCE WORK. THESE CONTROL MEASURES WILL BE ADEQUATE ONLY FOR VEGETATION CLEARING. THE DRAWINGS ARE NOT INTENDED TO GRAPHICALLY DEPICT ALL CONTROL MEASURES THAT WILL BE REQUIRED TO MEET THE REQUIREMENTS DESCRIBED IN 1.01.A.
2. DEVISE AND EMPLOY CONTROL MEASURES THROUGHOUT THE DURATION OF PROJECT, OVER ALL AREAS DISTURBED OR UNDISTURBED BY CONSTRUCTION, AS NECESSARY TO MEET THE REQUIREMENTS DESCRIBED IN 1.01.A.
3. DEVISE AND EMPLOY TEMPORARY CONTROL MEASURES AS NECESSARY TO MEET THE REQUIREMENTS DESCRIBED IN 1.01.A, WHILE ALLOWING WORK TO PROCEED IN AN EFFICIENT, COST EFFECTIVE MANNER.
4. DEVISE, EMPLOY AND MAINTAIN CONTROL MEASURES UNTIL SUCH TIME AS THE ENTIRE SITE IS PERMANENTLY STABILIZED BY ESTABLISHED VEGETATION, FINISH LANDSCAPE MATERIALS, PAVED SURFACES, AND/OR ROOF AREA.
5. ONCE THE SITE IS PERMANENTLY STABILIZED AND CERTIFIED AS SUCH BY ENGINEER, REMOVE TEMPORARY CONTROL MEASURES WHILE PROTECTING STABILIZED SURFACES.

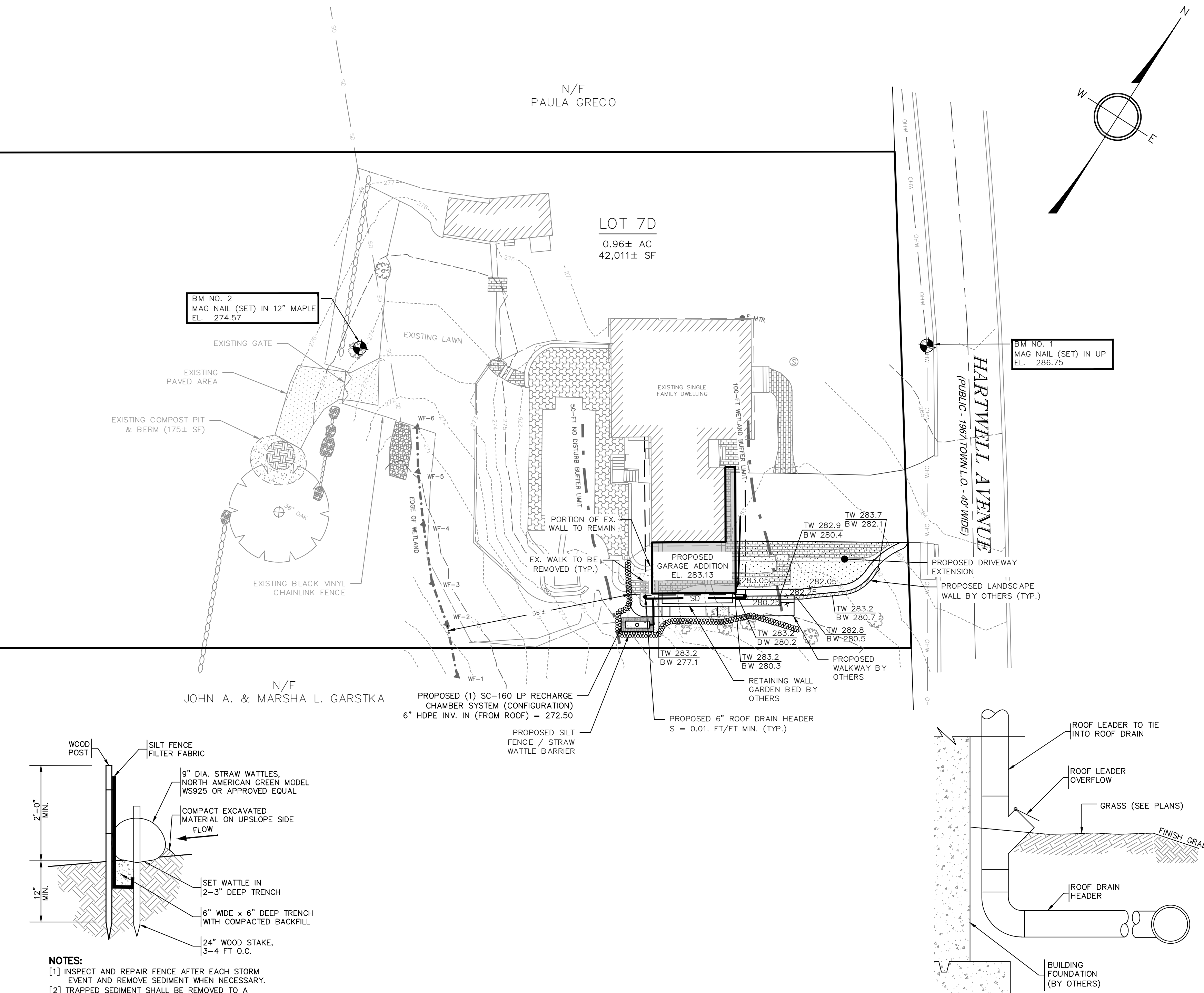
- 1.02 QUALITY ASSURANCE
A. COMPLY WITH GOVERNING CODES AND REGULATIONS, PROVIDE PRODUCTS FROM ACCEPTABLE MANUFACTURERS. USE EXPERIENCED INSTALLERS. DELIVER, HANDLE, AND STORE MATERIALS IN ACCORDANCE WITH MANUFACTURER'S INSTRUCTIONS. CONFORM TO CONDITIONS OF APPROVAL ISSUED BY REGULATORY AGENCIES INCLUDING, BUT NOT NECESSARILY LIMITED TO, LOCAL PLANNING BOARD, CONSERVATION COMMISSION, BOARD OF SELECTMEN, BOARD OF HEALTH, PUBLIC WORKS / HIGHWAY DEPARTMENT, STATE ENVIRONMENTAL PROTECTION DEPARTMENT, AND U.S. GOVERNMENT, ENVIRONMENTAL PROTECTION AGENCY. WHERE CONDITIONS OF REGULATORY APPROVAL DIFFER FROM REQUIREMENTS CONTAINED HEREIN OR ON THE DRAWINGS, COMPLY WITH THE MORE STRINGENT REQUIREMENT.

PART 2 - PRODUCTS

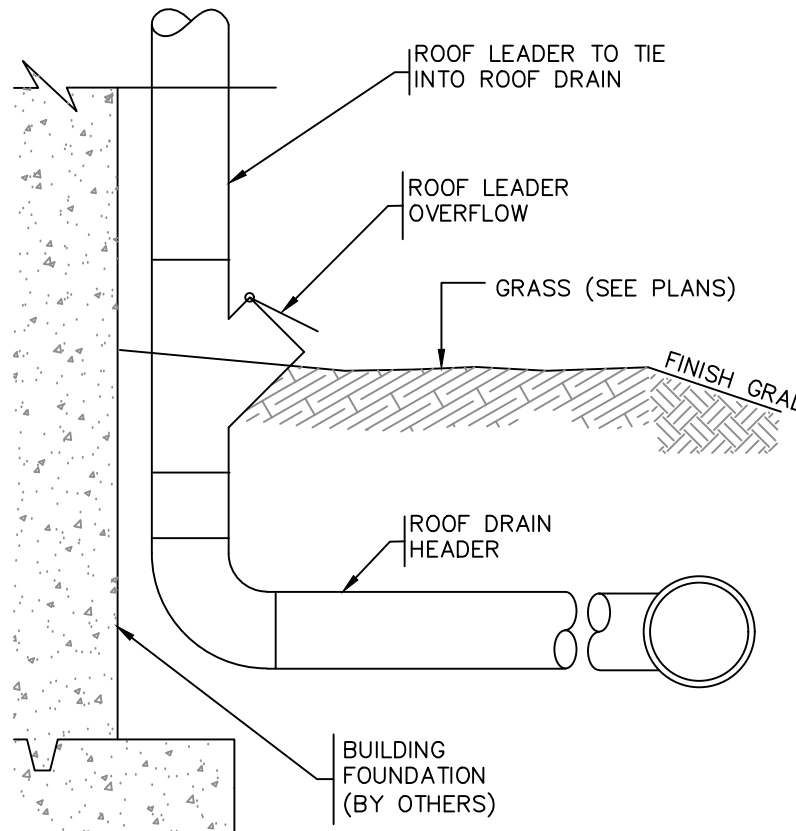
- 2.01 MATERIALS
A. STRAW WATTLES: 100% WHEAT STRAW WITH NATURAL BIO-DEGRADABLE JUTE NETTING. MINIMUM 9-INCH DIAMETER AND 10 FEET LONG. USE 12-INCH OR 20-INCH DIAMETER WATTLES TO PROTECT LARGER UNSTABLE AREAS.
B. SILT FENCE: NON-WOVEN, UV-RESISTANT, POLYPROPYLENE FABRIC, FLOW RATED AT 10 GPM/SF MINIMUM, GRAB TENSILE RATED AT 124 POUNDS MINIMUM, WITH INTEGRAL STAKE LOOPS, AND HARDWOOD STAKES. USE NO. 2130 BY AMOCO FABRICS & FIBERS, OR APPROVED EQUAL.
C. MULCH: ORGANICS INCLUDING STRAW, PROCESSED PINE / HEMLOCK TWIGS AND NEEDLES.
D. SEED MIXES: PERENNIAL RYEGRASS, KENTUCKY BLUEGRASS, AND / OR FINE FESCUE, DISEASE RESISTANT. NON-MAINTAINED AREA OPTION - ANNUAL RYEGRASS COMBINED WITH MEDIUM RED CLOVER.

PART 3 - EXECUTION

- 3.01 THROUGHOUT CONSTRUCTION
A. DEVISE WORK SEQUENCE SO AS TO LIMIT DRAINAGE AREA THAT IS TRIBUTARY TO DISTURBED AREAS. DEVISE, EMPLOY, AND MAINTAIN CONTROL MEASURES SUCH AS DIVERSION CHANNELS AND BERMS, STRATEGICALLY LOCATED STOCKPILES, AND SEDIMENT BASINS TO SUBDIVIDE DRAINAGE AREAS INTO SMALL, MANAGEABLE SUBAREAS, THEREBY MINIMIZING RUNOFF AND THE POTENTIAL FOR EROSION.
B. MAINTAIN BARRIER AT LIMIT OF WORK AND PROTECT EXISTING VEGETATION / FACILITIES OUTSIDE OF LIMIT OF WORK.
C. MAINTAIN SPARE MATERIAL STOCKPILES FOR IMMEDIATE EMPLOYMENT / REPAIR / EXPANSION OF CONTROL MEASURES. AT A MINIMUM, SUCH MATERIALS SHALL INCLUDE HAY BALES, SILT FENCE AND STAKES, AND CRUSHED STONE.
D. INSPECT AND MAINTAIN EFFECTIVENESS OF CONTROL MEASURES BY REPAIRING AS NECESSARY TO ENSURE INTENDED FUNCTION; BY SUPPLEMENTING AS NECESSARY FOR ADEQUATE EXTENT; BY REMOVING TRAPPED PRODUCTS OF EROSION AS NECESSARY TO MAINTAIN EFFECTIVE TRAP VOLUME.
E. LIMIT EXTENT OF WORK AREA SO THAT ALL DISTURBED AREAS CAN BE STABILIZED WITH CONTROL MEASURES WITHIN A 24-HOUR PERIOD.
F. INSTALL CONTROL MEASURES PRIOR TO ANY EARTH DISTURBANCE. EMPLOY TEMPORARY MEASURES AS NECESSARY TO STABILIZE DISTURBED AREAS, EVEN WHERE SUBSEQUENT CONSTRUCTION OPERATIONS MAY REQUIRE RE-DISTURBANCE.
G. WHEN INTENSE RAINFALL IS EXPECTED, CONSIDER, DEVISE, AND EMPLOY REINFORCING CONTROL MEASURES PRIOR TO THE RAINFALL EVENT TO MEET THE REQUIREMENTS DESCRIBED IN 1.01.A. IF NECESSARY, EMPLOY TEMPORARY CONTROL MEASURES ON MATERIAL STOCKPILES TO COUNTERACT POTENTIAL SEDIMENT TRANSPORT DURING INTENSE RAINFALL.
H. PROPERLY DISPOSE OF DEBRIS, SOLID WASTE, TRASH, AND CONSTRUCTION WASTE / BYPRODUCTS OFF SITE.
I. SWEEP OFF-SITE STREETS AS NECESSARY TO PREVENT SILT AND DEBRIS ORIGINATING ON SITE FROM ENTERING CLOSED DRAINAGE SYSTEMS AND / OR ENVIRONMENTALLY SENSITIVE AREAS.



STRAW WATTLE / SILT FENCE BARRIER
TYPICAL CROSS SECTION
NOT TO SCALE



ROOF LEADER CONNECTION
TYPICAL CROSS SECTION
NOT TO SCALE

PREPARED BY:



OWNER/APPLICANT:

MARC NATHANSON
76 HARTWELL AVENUE
LITTLETON, MA 01460

SEAL:



LIMHUOT TIV, P.E.

DRAWING ISSUED FOR:

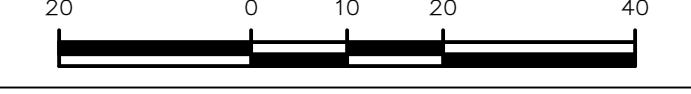
- ☐ CONCEPT ☐ CONSTRUCTION
☒ PERMIT ☐ CONSTRUCTION RECORD

THIS DRAWING IS NOT INTENDED FOR CONSTRUCTION UNTIL ISSUED FOR CONSTRUCTION BY GOLDSMITH, PREST & RINGWALL, INC.

No.	DATE	DESCRIPTION
3.	7/16/2025	EXISTING COMPOST AREA
2.	7/1/2025	CONSERVATION COMMISSION COMMENTS
1.	5/12/2025	FOR PERMITTING

No.	DATE	DESCRIPTION
DESIGNED BY:	JAAB	CHECKED BY: LT

SCALE: 1" = 20'



PROJECT:

RESIDENTIAL DEVELOPMENT NOTICE OF INTENT

76 HARTWELL AVENUE
LITTLETON, MA

SITE PLAN

DATE:	MAY 2025	SHEET
JOB NO.	251011	
SHEET:	1 OF 1	

1

COPYRIGHT © 2025 GOLDSMITH, PREST & RINGWALL, INC. ALL RIGHTS RESERVED