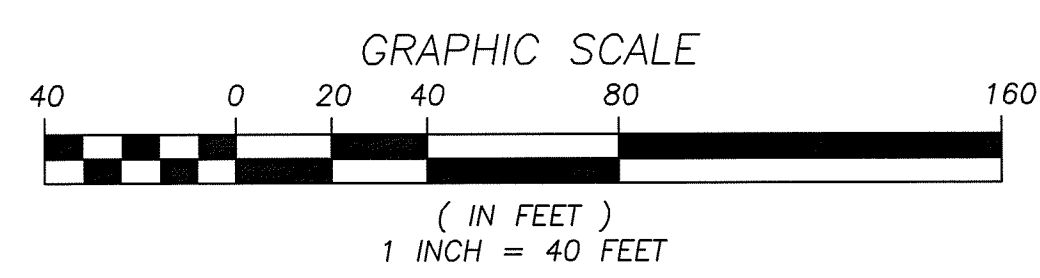
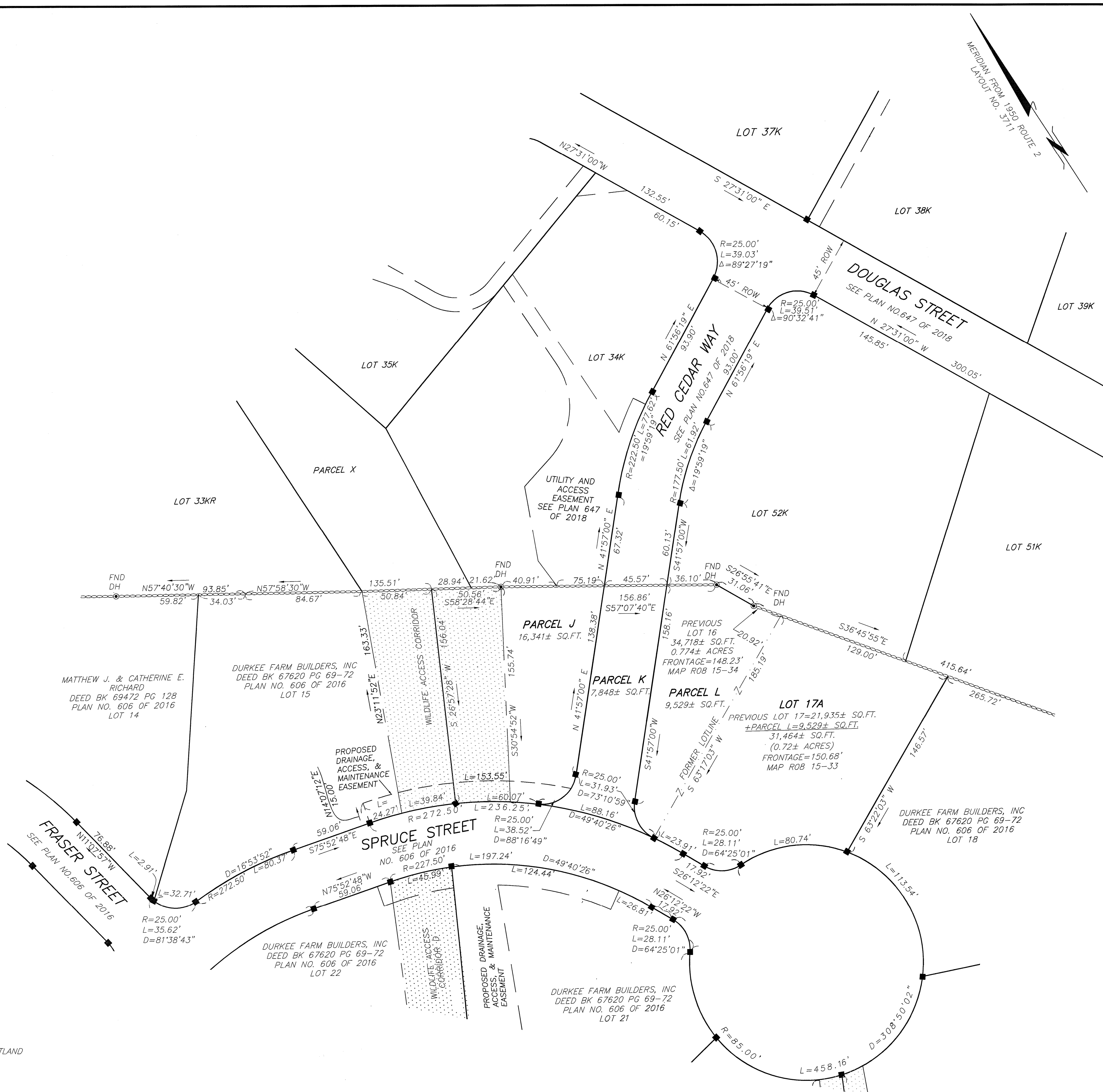


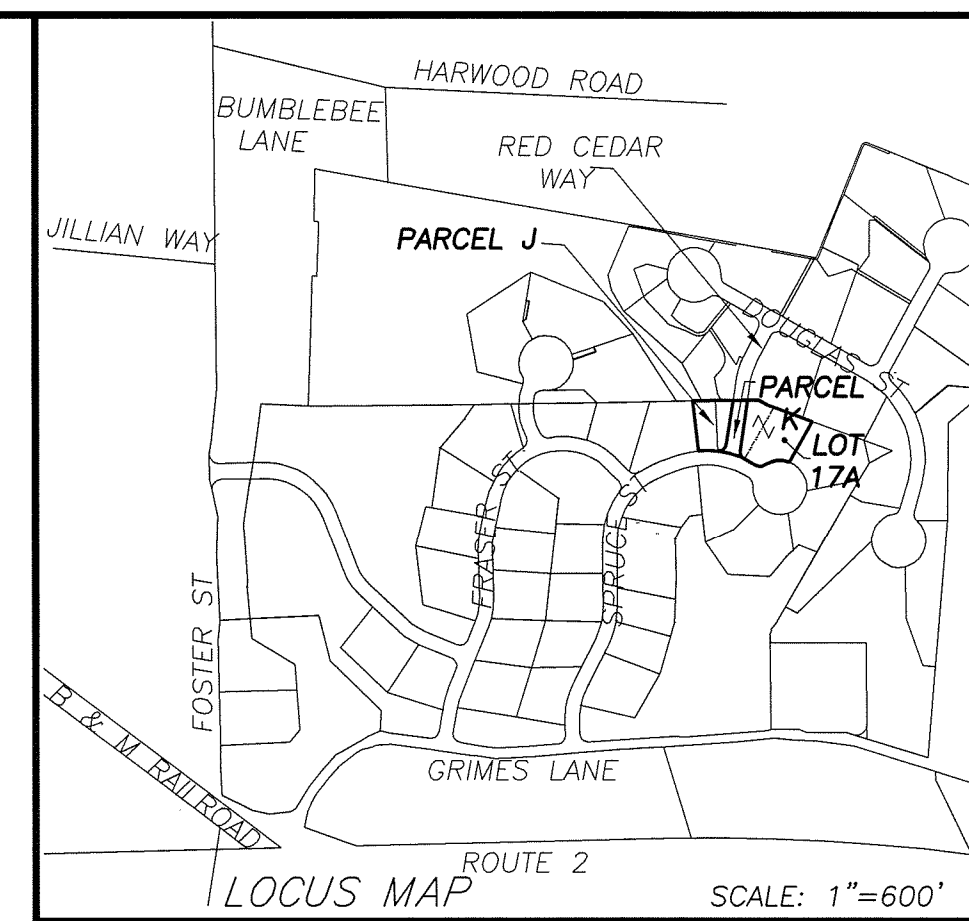
FOR REGISTRY OF DEEDS USE ONLY

I HEREBY CERTIFY THAT THIS PLAN WAS PREPARED IN CONFORMANCE WITH THE RULES AND REGULATIONS OF THE REGISTERS OF DEEDS OF THE COMMONWEALTH OF MASSACHUSETTS.

PROFESSIONAL LAND SURVEYOR _____ DATE _____



NO DETERMINATION AS TO COMPLIANCE WITH ZONING REQUIREMENTS HAS BEEN MADE OR INTENDED BY THE PLANNING BOARD IN ENDORSING THIS PLAN



PLAN OF LAND IN LITTLETON, MA
RED CEDAR WAY AND SPRUCE STREET
LITTLETON, MA

OWNER OF RECORD:
DURKEE FARM BUILDERS, INC.
487 GROTON ROAD
WESTFORD, MA 01886

ASSESSORS:
MAP RO8 BLOCK 15-33
HOUSE #16 SPRUCE STREET
MAP RO8 BLOCK 15-34
HOUSE #14 SPRUCE STREET

DEED REFERENCE:
DEED BK 67620 PG 69
DEED BK 67620 PG 72
CERTIFICATE OF PLANNING BOARD'S DECISION ON DEFINITIVE SUBDIVISION PLAN-DEED BK 67596 PG 225

PLAN REFERENCE:
DURKEE FARM ESTATES-
DEFINITIVE PLAN OF A SUBDIVISION AND OPEN SPACE DEVELOPMENT
PLAN NO. 606 OF 2016

KAYE ESTATES-
DEFINITIVE PLAN OF A SUBDIVISION
PLAN NO. 647 OF 2018

ZONING:
RESIDENCE DISTRICT
SETBACKS PER PLANNING BOARD DECISION
RECORDED IN DEED BK 67596 PAGES 225-263
OPEN SPACE DEVELOPMENT
FRONT = 20 FEET
SIDE = 10 FEET
REAR = 10 FEET

- NOTES:**
1. THE PURPOSE OF THIS PLAN IS TO REDIVIDE LOTS 16 AND 17 AS SHOWN ON DURKEE FARM ESTATES DEFINITIVE PLAN OF A SUBDIVISION AND OPEN SPACE DEVELOPMENT RECORDED AT MIDDLESEX SOUTH DISTRICT REGISTRY OF DEEDS IN PLAN NO. 606 OF 2016.
 2. PARCEL L CONTAINING 9,529± SQUARE FEET WILL BE COMBINED WITH LOT 17 CONTAINING 21,935± SQUARE FEET TO FORM LOT 17A CONTAINING 31,464± SQUARE FEET (0.72± ACRES).
 3. PARCEL J CONTAINING 16,341± SQUARE FEET AND PARCEL K CONTAINING 7,848± SQUARE FEET ARE NOT IN AND OF THEMSELVES BUILDING LOTS.
 4. LOTS 33KR, 34K, 35K, 37K, 38K, 52K, 51K, PARCEL X AND DOUGLAS STREET AND RED CEDAR WAY ARE NOT CHANGED AND ARE AS SHOWN ON PLAN NO. 647 OF 2018.
 5. LOTS 14, 15, 18, 21, 22 AND SPRUCE STREET AND FRASER STREET ARE NOT CHANGED AND ARE AS SHOWN ON PLAN NO. 606 OF 2016.
 6. THE PROPOSED BICYCLE TRAIL ACCESS PREVIOUSLY SHOWN ACROSS LOT 16, NOW PARCEL J, HAS BEEN DELETED.
 7. PARCEL K IS INTENDED TO BECOME A PORTION OF RED CEDAR WAY. THE CONSTRUCTION DETAILS OF WHICH ARE DEPICTED ON A DEFINITIVE SUBDIVISION PLAN APPROVED BY THE LITTLETON PLANNING BOARD KNOWN AS KAYE ESTATES PLAN DATED OCTOBER 30, 2017 REVISED THROUGH JUNE 5, 2018, ENDORSED BY THE PLANNING BOARD ON JUNE 7, 2018 RECORDED IN THE MIDDLESEX SOUTH DISTRICT REGISTRY OF DEEDS IN PLAN NO. 647 OF 2018.

PREPARED FOR:
DURKEE FARM BUILDERS, INC.
487 GROTON ROAD
WESTFORD, MA

HANCOCK ASSOCIATES

Civil Engineers
Land Surveyors
Environmental Consultants

34 Chelmsford St., Chelmsford, MA 01824
voice (978)244-0110 Fax (978)244-1133
WWW.HANCOCKASSOCIATES.COM

BY	APP	DATE	ISSUE/REVISION DESCRIPTION

DATE: 1/30/19 DESIGN BY: PNC
SCALE: 1" = 40' DRAWN BY: PNC
APPRVD. BY: DWA CHECK BY: DWA

APPROVAL UNDER THE SUBDIVISION CONTROL LAW NOT REQUIRED C 41 S 81P
LITTLETON PLANNING BOARD

PLAN OF LAND IN LITTLETON, MA

OWNER OF RECORD:
DURKEE FARM BUILDERS, INC.
487 GROTON ROAD
WESTFORD, MA 01886

DWG: 18885-DF.DWG
LAYOUT: ANR
SHEET: 1 OF 1
PROJECT NO.: 18885

