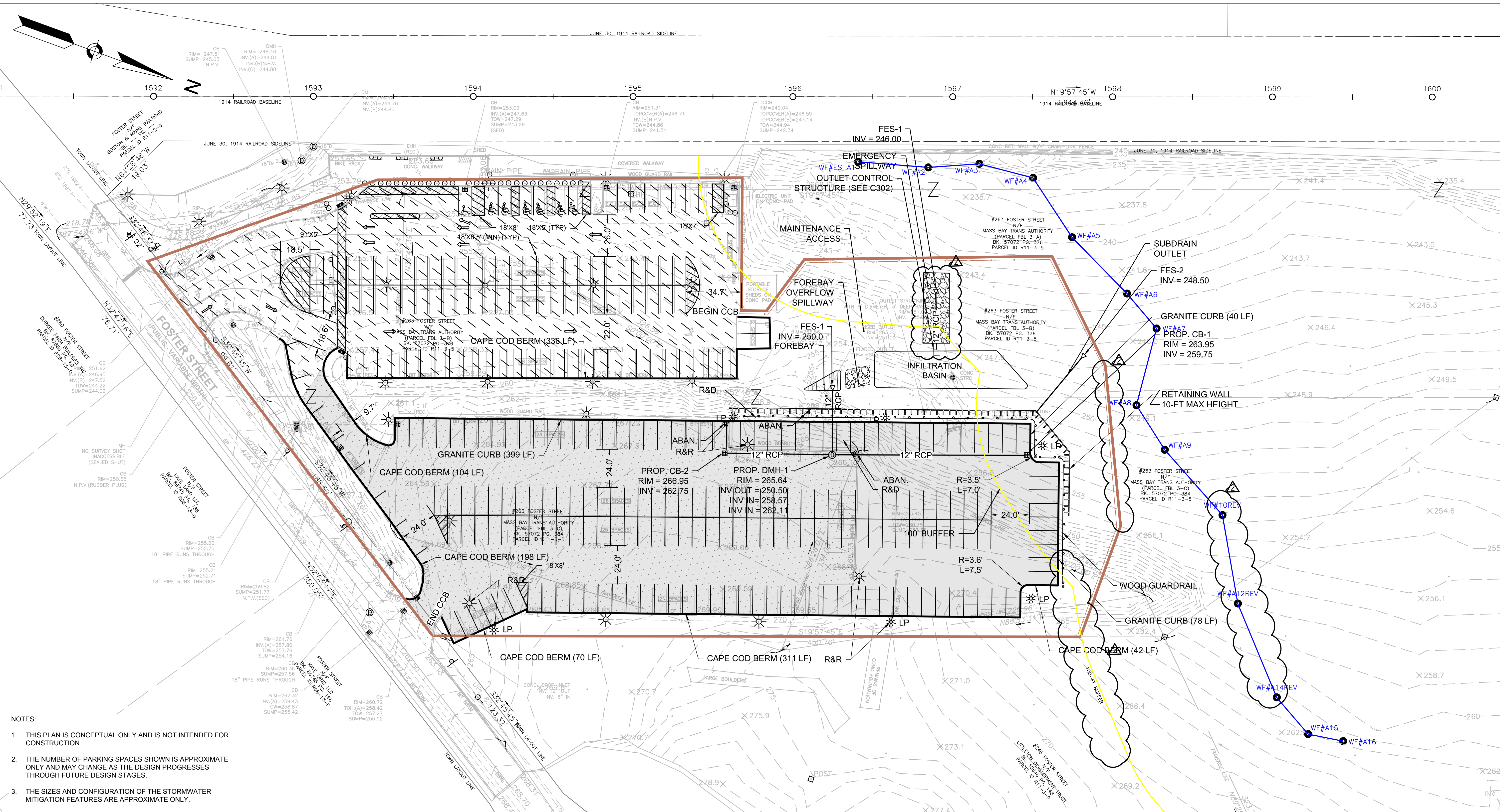
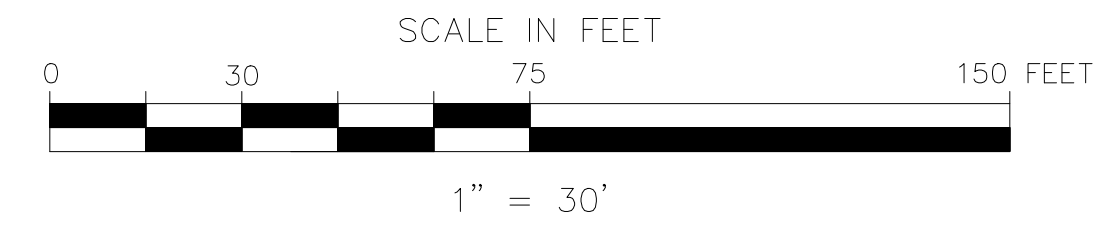
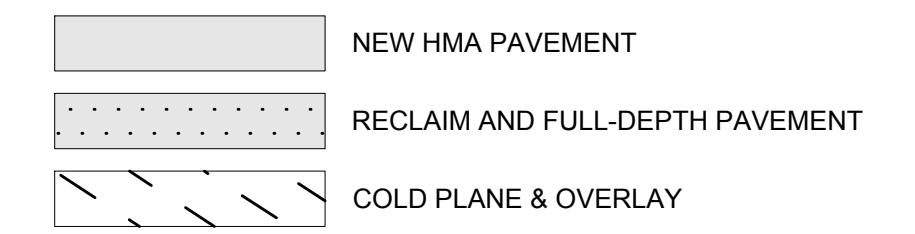


F:\Projects\20141019\Task Order #4 - MBTA Parking Lot Improvements\Littleton Rte 495 Station.dwg\NOI Submission\C202 Site Layout Plan.dwg



- NOTES:
1. THIS PLAN IS CONCEPTUAL ONLY AND IS NOT INTENDED FOR CONSTRUCTION.
  2. THE NUMBER OF PARKING SPACES SHOWN IS APPROXIMATE ONLY AND MAY CHANGE AS THE DESIGN PROGRESSES THROUGH FUTURE DESIGN STAGES.
  3. THE SIZES AND CONFIGURATION OF THE STORMWATER MITIGATION FEATURES ARE APPROXIMATE ONLY.

EXISTING PARKING	PROPOSED PARKING	PROPOSED PARKING EXPANSION
204 TOTAL SPACES	265 TOTAL SPACES	72 NEW SPACES
6 H.C. SPACES	7 H.C. SPACES REQUIRED	11 REMOVED SPACES
1 H.C. VAN SPACE	1 H.C. VAN SPACE	
4 ELECTRIC CAR CHARGE SPACES	4 ELECTRIC CAR CHARGE SPACES	NET INCREASE OF 61 SPACES



MASSACHUSETTS BAY TRANSPORTATION AUTHORITY

REPAIR/REHABILITATION OF  
LITTLETON RTE 495 STATION PARKING LOT  
MBTA CONTRACT NO. W90CN01

SITE LAYOUT, MATERIALS AND UTILITY PLAN

GREEN INTERNATIONAL AFFILIATES, INC.  
WESTFORD, MA.

ISSUE	DATE	DESCRIPTION	BY	CHKD.	APP.	DATE
2	12/4/19	REVISED WETLAND DELINEATION				
1	8/20/19	NOI SUBMISSION				

PROJECT MANAGER		DES. BY		DR. BY		CHK. BY		DATE
HORIZ: AS NOTED		AF		AE				08/20/2019
VERT: AS NOTED								
DATE: 08/20/2019								

PLAN NO.	ISSUE
XXXXXX	
SHEET C202	